

53FT 1974 HATTERAS 53 MOTOR YACHT — HATTERAS



Builder: HATTERAS

Year Built: 1974

Model: Motor Yacht

Price: PRICE ON APPLICATION

Location: United States

LOA: 53' 0" (16.15m)

Beam: 15' 10" (4.83m)

Min Draft: 4' 0" (1.22m)

Max Draft: 4' 6" (1.37m)

Cruise Speed: 15 Kts. (17 MPH)

Max Speed: 18 Kts. (21 MPH)

Our experienced yacht broker, Andrey Shestakov, will help you choose and buy a yacht that best suits your needs 53ft 1974 Hatteras 53 Motor Yacht — HATTERAS from our catalogue. Presently, at Shestakov Yacht Sales Inc., we have a wide variety of yachts available on our sale's list. We also work in close contact with all the big yacht manufacturers from all over the world.

If you would like to buy a yacht 53ft 1974 Hatteras 53 Motor Yacht — HATTERAS or would like help answering any questions concerning purchasing, selling or chartering a yacht, please call **+1(954)274-4435**

TABLE OF CONTENTS

TABLE OF CONTENTS	2
SPECIFICATIONS	5
Basic Information	5
Dimensions	5
Speed, Capacities and Weight	5
Accommodations	5
Hull and Deck Information	5
Engine Information	6
DETAILED INFORMATION	7
Accommodations	7
Classic Hatteras 53 Motor Yacht	8
Exclusions	8
Disclaimer	8
PHOTOS	10
Profile Port	10
Port Bridge & Salon deck	10
Starboard Lower Helm entry & Bridge	10
Port Aft deck & Wing Door	10
Starboard forward from the dock	11
Profile Port with Boarding Stairs	11
Port forward from the dock	11
Port forward 2	11
Master Closets	11
Master berth & drawers Starboard	11
Master drawers Port	12
Master facing Aft - opening ports	12
Master shower	12
Master Head	12

Shelf storage	12
Guest cabin	12
Guest head	13
Guest head 2	13
Full size Washer & Dryer	13
Galley 1	13
Galley 2	14
Galley dinette	14
Salon looking toward Enclosed Aft deck	14
Salon rerclining chairs	14
Salon desk and computer station	14
Lower Helm and Salon recliners	14
Eletrical panels	15
Lower Helm 1	15
Lower Helm 2	15
Desk and computer station	15
Enclosed Aft deck looking into Salon	15
Aft deck Bar and ice machine	15
Aft deck 2	16
Aft deck table and chairs	16
Forward deck toward Bridge	16
Port Side deck and boarding stairs	16
Starboard forward deck box	17
Port forward deck box	17
twin anchors and windlass	17
Bridge Helm 1	17
Bridge Helm 2	17
Aft Bridge deck and dinghy with Davit	17
Bridge seating with lounge	18

Radar arch and dinghy with davit	18
Engine room 1	18
Electric Dinghy Davit	18
Engine room 2	18
Engine room John Deere	18
Engine room 4	19
CONTACTS	20
Contact details	20
Telephones	20
Office hours	20
Address	20

SPECIFICATIONS

Basic Information

Category: Motor Yacht

Model Year: 1974

Year Built: 1974

Country: United States

Dimensions

LOA: 53' 0" (16.15m)

LWL: 47' 3" (14.40m)

Beam: 15' 10" (4.83m)

Min Draft: 4' 0" (1.22m)

Max Draft: 4' 6" (1.37m)

MFG Length: 53' 1" (16.18m)

Speed, Capacities and Weight

Cruise Speed: 15 Kts. (17 MPH)

Cruise Speed RPM: 1900 Kts.

Max Speed: 18 Kts. (21 MPH)

Max Speed RPM: 2300 Kts.

Displacement: 55000 Pounds

Water Capacity: 245 Gallons

Holding Tank: 300 Gallons

Fuel Capacity: 1950 Gallons

Accommodations

Total Cabins: 3

Total Berths: 9

Total Heads: 3

Hull and Deck Information

Hull Material: Fiberglass

Engine Information

Engines: 2

Manufacturer: John Deere

Model: 6081 AFM 75 / 375 HP

Engine Type: Inboard

Fuel Type: Diesel

DETAILED INFORMATION

Accommodations

Forward Cabin:

Most forward is the chain locker access, followed by a Guest cabin with over/under berths and private electric head with separate shower - lots of storage space. There is a full size Whirlpool stack 110V Washer and 220V Dryer in a locker. Full A/C with intercom and opening ports + deck hatch for light and ventilation.

Galley is up 2 steps - Starboard side is custom U shaped counter top with all appliances and a dinette to Port. Kitchen Aid flat surface stove & microwave, garbage disposal, dish washer, double sinks and A/C climate control.

2 steps down going aft - is center access to the Engine rooms. Farther aft to Port is the VIP Guest state room with 2 berths and 2 opening ports with full A/C controls. --- To Starboard is a head with separate stall shower.

Going aft is the Master State room with center line queen berth and Starboard side head with separate stall shower --- lots of drawers and closets. This is a full beam cabin in the center of the boat making it large. This cabin is well lighted, ventilated and feels like the Master in your home. 2 night stands, full carpet and full A/C controls.

Going up from the sleep cabins is the Main Salon and lower Helm station, having access doors to the side decks on both sides.

Aft of the Salon is the large enclosed aft deck area with Bar, ice machine, wing deck doors to the side decks and staircase to the large Fly - Bridge area. There is a center table with 4 chairs and sliding windows. Great dining and lounging comfort and view.

Main Salon: Large windows surround the Salon and lower Helm with comfortable reclining chairs to Starboard and a great computer desk and navigation area to Port. All cabins are supplied with A/C and there is a 27" flat screen in the Salon.

The working deck level:

On level with the Salon and enclosed aft deck area are wide side decks for access to the bow. The lower helm has access doors on both sides to these decks. Forward is a large anchor locker and seating area - Two 12 V Lofrans 1500 watt Windlass set up with twin 66 lbs. Bruce Anchors rigged 200 feet 3/8 BBB chain each side. There is a spare Fortress anchor stored and a 44 lb. Danforth with 250 feet of 3/4" rode. There is fresh water wash-down installed in the anchor area. There is a 12V Bow Thruster installed and Stabilizers (disconnected). Stern has a full Teak swim platform and a towing pad eye.

Lower Helm: Full Instrumentation (2007) - Glendenning Electronic controls (2002) - Auto Helm

speed and depth - Robertson Auto Pilot 300X (2003) - Apelco VHF and Hailer - PC wireless keyboard and navigation software with charts - KVH Azimuth gyro trac for auto pilot and radar overlay - ACR Spotlight - Danforth compass - Bennett trim tabs - Westmar Stabilizer controls (2003 now disconnected) - Bilge alarm systems - Rudder indicator - Sea 235 SSB Radio - Furuno GP-31 screen - Westmar Bow Thruster (2000) - Furuno Nav-net GD 1700C (2005).

Upper helm & Fly-Bridge: Full Instrumentation - SSB Controls - ICOM VHF Radio - ACR Spotlight - Glendenning Engine Controls - Furuno 1900 C Nav-net multi function plotter with open array Radar display - Inrerphase twin scope bottom scanner - Robertson Auto Pilot - Auto helm depth & speed - Richie Compass - Trim Tabs - FLO Scan fuel monitoring system (needs service) - air horns - Windlass Controls - Pipe Welders electric dinghy davit and chocks - Hydraulic Radar Arch lowering control. Very comfortable seating area for all Guests with great visibility.

Electrical: 50 AMP shore power Port and Starboard - 12V and 110V Breaker Panels - 6 group 31 batteries combined for 32V house system - Raritan Consta-volt 40 AMP charger - 6 group 31 12V batteries for Heart 3000 Watt Inverter with # 4 cable (All batteries are AGM - April 2014) - Isuzu 18.5 KW Generator (9100 hours).

Main Engines and mechanicals: 2 John Deere 6081 AFM 75 / 375 HP FWC Diesels (Port hours 1503 Starboard hours 3600) - Twin disc 509 transmissions - 3 fiberglass fuel tanks (100 gal. Bow, 315 gal. middle, 215 gal. aft) - 7 bilge pumps automatic - Two 16,500 BTU A/C units (2007), one 16,000 BTU A/c (2007), one 12,000 BTU unit - Automatic Halon fire system - Jets TM Commercial vacuum head system - 120 gal. holding tank - spare prop shaft and coupling - spare props - numerous spare parts - Dockside water connection - 245 gal. fresh water tank - Racor filter/water separators on engines and generator

Classic Hatteras 53 Motor Yacht

Well maintained and up dated Hatteras with John Deere Diesel Power

Exclusions

Owner's personal belongings.

Disclaimer

The Company offers the details of this vessel or yacht in good faith but cannot guarantee or warrant the accuracy of this information nor warrant the condition of the vessel. A buyer should instruct his representatives, agents, or his surveyors, to investigate such details as the buyer desires validated. This vessel or yacht is offered subject to prior sale, price change, or withdrawal

without notice.

PHOTOS

Profile Port



Port Bridge & Salon deck



Starboard Lower Helm entry & Bridge



Port Aft deck & Wing Door



Starboard forward from the dock



Profile Port with Boarding Stairs



Port forward from the dock



Port forward 2



Master Closets



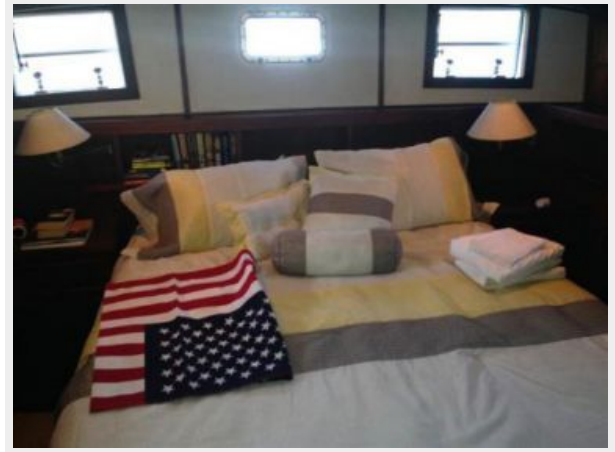
Master berth & drawers Starboard



Master drawers Port



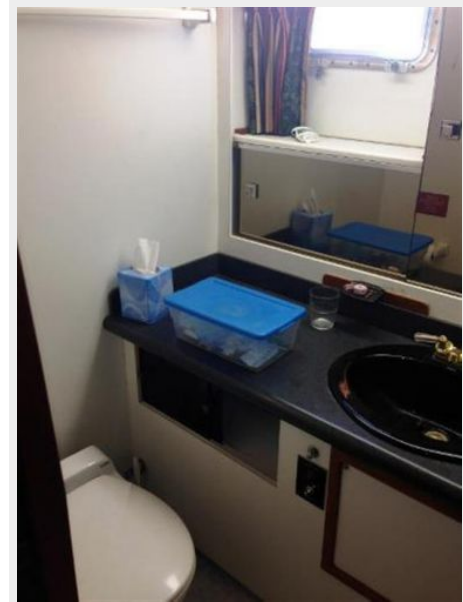
Master facing Aft - opening ports



Master shower



Master Head



Shelf storage



Guest cabin



Guest head



Guest head 2



Full size Washer & Dryer



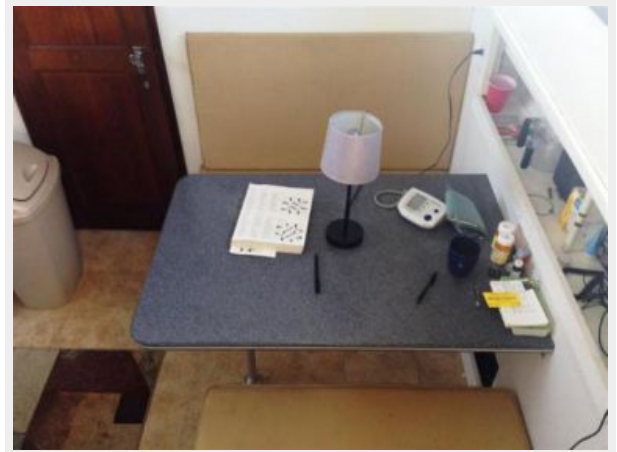
Galley 1



Galley 2



Galley dinette



Salon looking toward Enclosed Aft deck



Salon reclining chairs



Salon desk and computer station



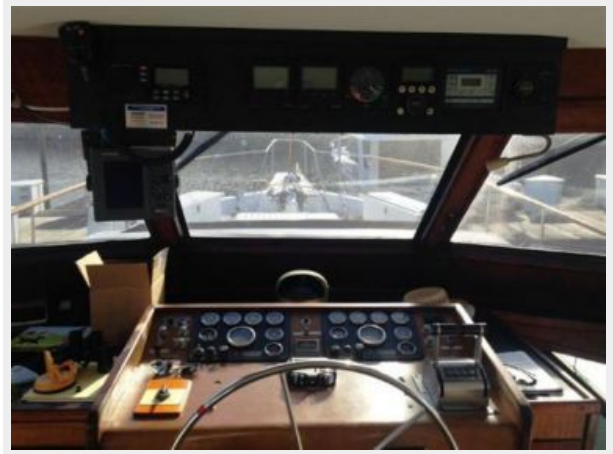
Lower Helm and Salon recliners



Eletrical panels



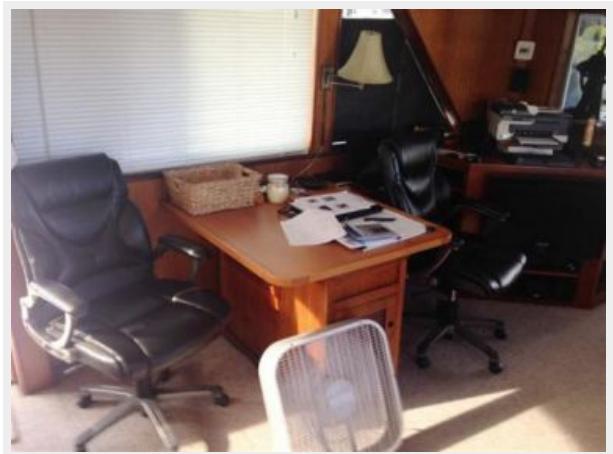
Lower Helm 1



Lower Helm 2



Desk and computer station



Enclosed Aft deck looking into Salon



Aft deck Bar and ice machine



Aft deck 2

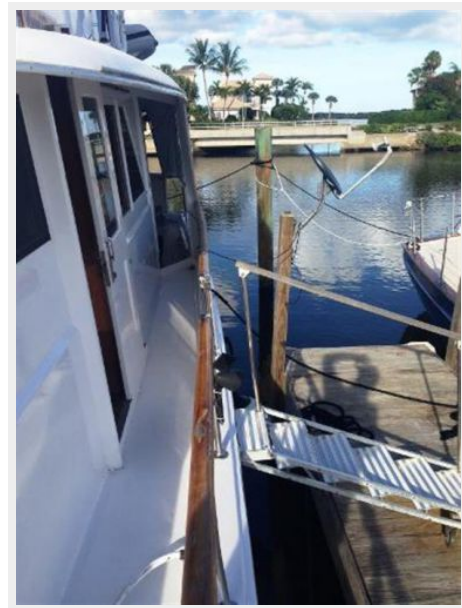
Aft deck table and chairs



Forward deck toward Bridge



Port Side deck and boarding stairs



Starboard forward deck box



Port forward deck box



twin anchors and windlass



Bridge Helm 1



Bridge Helm 2



Aft Bridge deck and dinghy with Davit



Bridge seating with lounge



Radar arch and dinghy with davit



Engine room 1



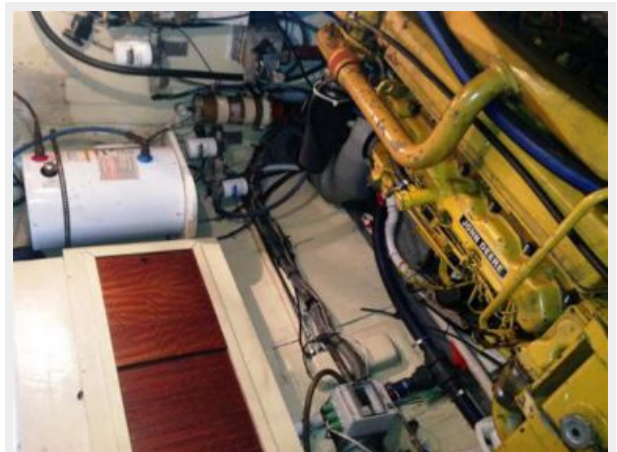
Electric Dinghy Davit



Engine room 2



Engine room John Deere



Engine room 4



CONTACTS

Andrey Shestakov, leading yacht broker of the sales department of Shestakov Yacht Sales Inc. Shestakov Yacht Sales Inc., the official representative of the Miami/Fort Lauderdale FL headquarters.

Contact details

Email: andrey@shestakovyachtsales.com

Web: shestakovyachtsales.com/en/

Telephones

USA: +1(954)274-4435

Office hours

Monday – Saturday: **9:00 - 21:00** EDT

Sunday: **closed**

Address



Harbour Towne Marina, 850 NE 3rd St,
STE 213, Dania, FL 33004