

53FT 1974 HATTERAS 53 MOTOR YACHT — HATTERAS



Судостроитель: HATTERAS

Год постройки: 1974

Модель: Моторная яхта

Цена: ЦЕНА ЯХТЫ ПО ЗАПРОСУ

Местонахождение: United States

Длина общая: 53' 0" (16.15m)

Ширина: 15' 10" (4.83m)

Мин. осадка: 4' 0" (1.22m)

Макс. осадка: 4' 6" (1.37m)

Крейс. скорость: 15 Kts. (17 MPH)

Макс. скорость: 18 Kts. (21 MPH)

Купить 53ft 1974 Hatteras 53 Motor Yacht — HATTERAS а также выбрать подходящую вам яхту из нашего каталога яхт вам поможет опытный яхтенный брокер Андрей Шестаков. На сегодняшний день компания Shestakov Yacht Sales Inc. имеет большое количество яхт в собственном списке продаж, а также тесно сотрудничает со всеми крупными яхтенными производителями по всему миру.

Для того чтобы купить яхту 53ft 1974 Hatteras 53 Motor Yacht — HATTERAS а также проконсультироваться по любому вопросу связанному с покупкой, продажей, чартером яхт позвоните по телефону **+7(918)465-66-44**.

ОГЛАВЛЕНИЕ

ОГЛАВЛЕНИЕ	2
ХАРАКТЕРИСТИКИ	5
Основная информация	5
Размеры	5
Скорость, вместимость и масса	5
Размещение	5
Корпус и палуба	5
Информация о двигателе	6
ПОДРОБНОЕ ОПИСАНИЕ	7
Accommodations	7
Classic Hatteras 53 Motor Yacht	8
Исключения	8
Отказ от ответственности	8
ФОТОГРАФИИ	10
Profile Port	10
Port Bridge & Salon deck	10
Starboard Lower Helm entry & Bridge	10
Port Aft deck & Wing Door	10
Starboard forward from the dock	11
Profile Port with Boarding Stairs	11
Port forward from the dock	11
Port forward 2	11
Master Closets	11
Master berth & drawers Starboard	11
Master drawers Port	12
Master facing Aft - opening ports	12
Master shower	12
Master Head	12

Shelf storage	12
Guest cabin	12
Guest head	13
Guest head 2	13
Full size Washer & Dryer	13
Galley 1	13
Galley 2	14
Galley dinette	14
Salon looking toward Enclosed Aft deck	14
Salon rerclining chairs	14
Salon desk and computer station	14
Lower Helm and Salon recliners	14
Eletrical panels	15
Lower Helm 1	15
Lower Helm 2	15
Desk and computer station	15
Enclosed Aft deck looking into Salon	15
Aft deck Bar and ice machine	15
Aft deck 2	16
Aft deck table and chairs	16
Forward deck toward Bridge	16
Port Side deck and boarding stairs	16
Starboard forward deck box	17
Port forward deck box	17
twin anchors and windlass	17
Bridge Helm 1	17
Bridge Helm 2	17
Aft Bridge deck and dinghy with Davit	17
Bridge seating with lounge	18

Radar arch and dinghy with davit	18
Engine room 1	18
Electric Dinghy Davit	18
Engine room 2	18
Engine room John Deere	18
Engine room 4	19
КОНТАКТЫ	20
Контактная информация	20
Телефоны	20
Время работы	20
Адрес	20

ХАРАКТЕРИСТИКИ

Основная информация

Тип судна: Моторная яхта

Модельный год: 1974

Год постройки: 1974

Страна: United States

Размеры

Длина общая: 53' 0" (16.15m)

Длина по ватерлинии: 47' 3" (14.40m)

Ширина: 15' 10" (4.83m)

Мин. осадка: 4' 0" (1.22m)

Макс. осадка: 4' 6" (1.37m)

Длина привального бруса: 53' 1" (16.18m)

Скорость, вместимость и масса

Крейс. скорость: 15 Kts. (17 MPH)

Крейсерская скорость поворота: 1900 Kts.

Макс. скорость: 18 Kts. (21 MPH)

Макс. скорость поворота: 2300 Kts.

Водоизмещение: 55000 Pounds

Вместимость воды: 245 Gallons

Вместимость сточного бака: 300 Gallons Объем топливного бака: 1950 Gallons

Размещение

Всего кают: 3

Всего коек: 9

Всего ком. состава: 3

Корпус и палуба

Материал корпуса: Fiberglass

Информация о двигателе

Двигатели: 2

Производитель: John Deere

Модель: 6081 AFM 75 / 375 HP

Тип двигателя: Inboard

Тип топлива: Diesel

ПОДРОБНОЕ ОПИСАНИЕ

Accommodations

Forward Cabin:

Most forward is the chain locker access, followed by a Guest cabin with over/under berths and private electric head with separate shower - lots of storage space. There is a full size Whirlpool stack 110V Washer and 220V Dryer in a locker. Full A/C with intercom and opening ports + deck hatch for light and ventilation.

Galley is up 2 steps - Starboard side is custom U shaped counter top with all appliances and a dinette to Port. Kitchen Aid flat surface stove & microwave, garbage disposal, dish washer, double sinks and A/C climate control.

2 steps down going aft - is center access to the Engine rooms. Farther aft to Port is the VIP Guest state room with 2 berths and 2 opening ports with full A/C controls. --- To Starboard is a head with separate stall shower.

Going aft is the Master State room with center line queen berth and Starboard side head with separate stall shower --- lots of drawers and closets. This is a full beam cabin in the center of the boat making it large. This cabin is well lighted, ventilated and feels like the Master in your home. 2 night stands, full carpet and full A/C controls.

Going up from the sleep cabins is the Main Salon and lower Helm station, having access doors to the side decks on both sides.

Aft of the Salon is the large enclosed aft deck area with Bar, ice machine, wing deck doors to the side decks and staircase to the large Fly - Bridge area. There is a center table with 4 chairs and sliding windows. Great dining and lounging comfort and view.

Main Salon: Large windows surround the Salon and lower Helm with comfortable reclining chairs to Starboard and a great computer desk and navigation area to Port. All cabins are supplied with A/C and there is a 27" flat screen in the Salon.

The working deck level:

On level with the Salon and enclosed aft deck area are wide side decks for access to the bow. The lower helm has access doors on both sides to these decks. Forward is a large anchor locker and seating area - Two 12 V Lofrans 1500 watt Windlass set up with twin 66 lbs. Bruce Anchors rigged 200 feet 3/8 BBB chain each side. There is a spare Fortress anchor stored and a 44 lb. Danforth with 250 feet of 3/4" rode. There is fresh water wash-down installed in the anchor area. There is a 12V Bow Thruster installed and Stabilizers (disconnected). Stern has a full Teak swim platform and a towing pad eye.

Lower Helm: Full Instrumentation (2007) - Glendenning Electronic controls (2002) - Auto Helm

speed and depth - Robertson Auto Pilot 300X (2003) - Apelco VHF and Hailer - PC wireless keyboard and navigation software with charts - KVH Azimuth gyro trac for auto pilot and radar overlay - ACR Spotlight - Danforth compass - Bennett trim tabs - Westmar Stabilizer controls (2003 now disconnected) - Bilge alarm systems - Rudder indicator - Sea 235 SSB Radio - Furuno GP-31 screen - Westmar Bow Thruster (2000) - Furuno Nav-net GD 1700C (2005).

Upper helm & Fly-Bridge: Full Instrumentation - SSB Controls - ICOM VHF Radio - ACR Spotlight - Glendenning Engine Controls - Furuno 1900 C Nav-net multi function plotter with open array Radar display - Inrerphase twin scope bottom scanner - Robertson Auto Pilot - Auto helm depth & speed - Richie Compass - Trim Tabs - FLO Scan fuel monitoring system (needs service) - air horns - Windlass Controls - Pipe Welders electric dinghy davit and chocks - Hydraulic Radar Arch lowering control. Very comfortable seating area for all Guests with great visibility.

Electrical: 50 AMP shore power Port and Starboard - 12V and 110V Breaker Panels - 6 group 31 batteries combined for 32V house system - Raritan Consta-volt 40 AMP charger - 6 group 31 12V batteries for Heart 3000 Watt Inverter with # 4 cable (All batteries are AGM - April 2014) - Isuzu 18.5 KW Generator (9100 hours).

Main Engines and mechanicals: 2 John Deere 6081 AFM 75 / 375 HP FWC Diesels (Port hours 1503 Starboard hours 3600) - Twin disc 509 transmissions - 3 fiberglass fuel tanks (100 gal. Bow, 315 gal. middle, 215 gal. aft) - 7 bilge pumps automatic - Two 16,500 BTU A/C units (2007), one 16,000 BTU A/c (2007), one 12,000 BTU unit - Automatic Halon fire system - Jets TM Commercial vacuum head system - 120 gal. holding tank - spare prop shaft and coupling - spare props - numerous spare parts - Dockside water connection - 245 gal. fresh water tank - Racor filter/water separators on engines and generator

Classic Hatteras 53 Motor Yacht

Well maintained and up dated Hatteras with John Deere Diesel Power

Исключения

При продаже яхты исключаются личные вещи владельца.

Отказ от ответственности

Компания предоставляет описание судна или яхты добросовестно, но не может гарантировать точность этой информации, а также не ручается за техническое состояние. Покупатель должен проинструктировать своих агентов или оценщиков исследовать представленную информацию более подробно, по собственному желанию.

Продажа судна или яхты, изменение цены или снятие с продажи будет происходить без предварительного уведомления.

ФОТОГРАФИИ

Profile Port



Port Bridge & Salon deck



Starboard Lower Helm entry & Bridge



Port Aft deck & Wing Door



Starboard forward from the dock



Profile Port with Boarding Stairs



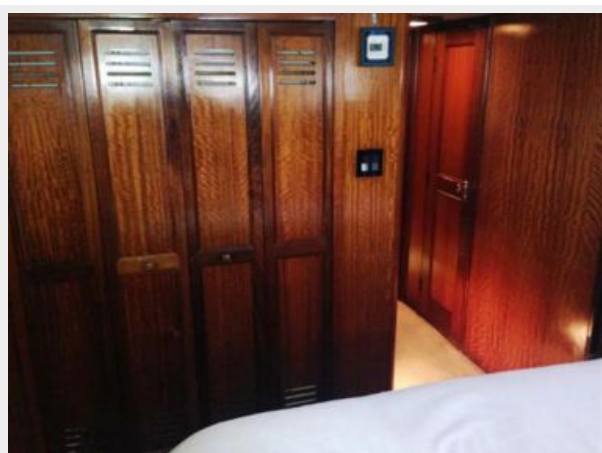
Port forward from the dock



Port forward 2



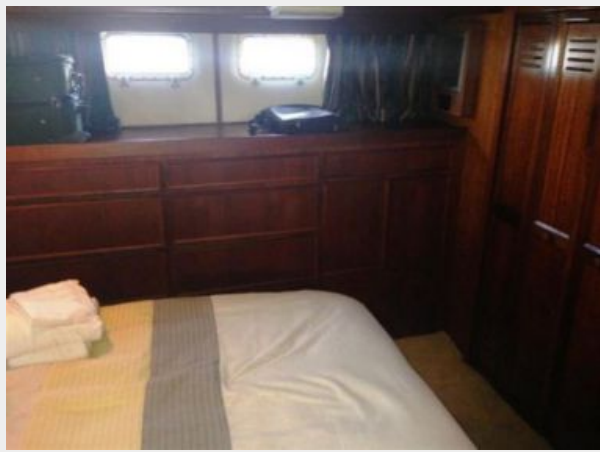
Master Closets



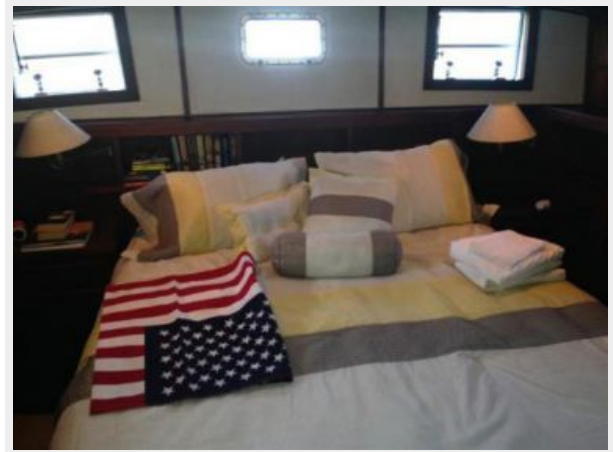
Master berth & drawers Starboard



Master drawers Port



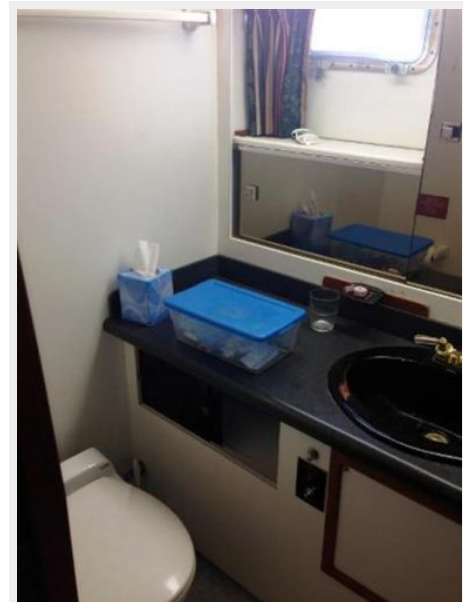
Master facing Aft - opening ports



Master shower



Master Head



Shelf storage



Guest cabin



Guest head



Guest head 2



Full size Washer & Dryer



Galley 1



Galley 2



Galley dinette



Salon looking toward Enclosed Aft deck



Salon reclining chairs



Salon desk and computer station



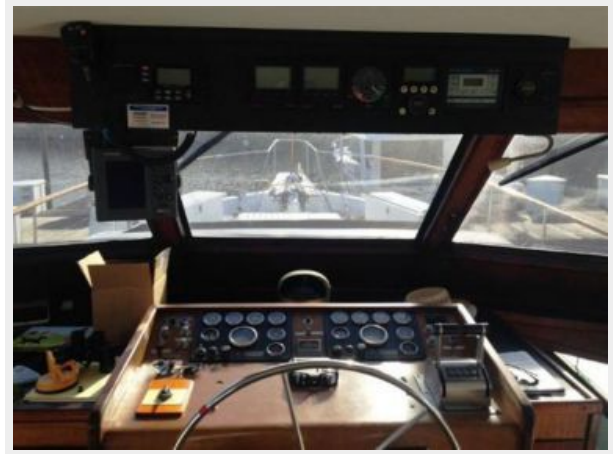
Lower Helm and Salon recliners



Electrical panels



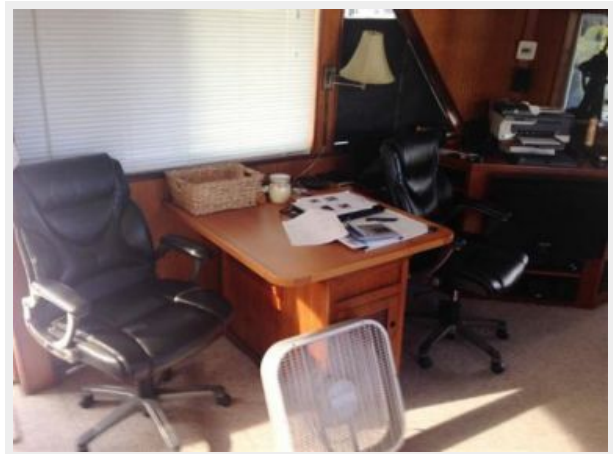
Lower Helm 1



Lower Helm 2



Desk and computer station



Enclosed Aft deck looking into Salon



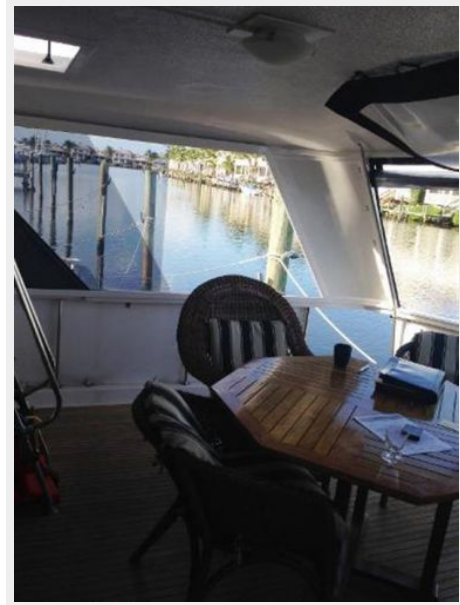
Aft deck Bar and ice machine



Aft deck table and chairs



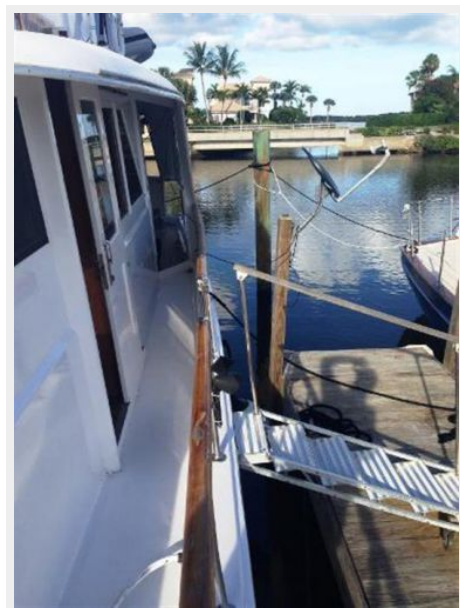
Aft deck 2



Forward deck toward Bridge



Port Side deck and boarding stairs



Starboard forward deck box



Port forward deck box



twin anchors and windlass



Bridge Helm 1



Bridge Helm 2



Aft Bridge deck and dinghy with Davit



Bridge seating with lounge



Radar arch and dinghy with davit



Engine room 1



Electric Dinghy Davit



Engine room 2



Engine room John Deere



Engine room 4



КОНТАКТЫ

Андрей Шестаков (Andrey Shestakov) – ведущий яхтенный брокер отдела продаж яхт и судов компании Shestakov Yacht Sales Inc. Официальный представитель Shestakov Yacht Sales Inc. для русскоговорящих клиентов в центральном офисе компании в Майами/Форт Лодердейл/Флорида/США.

Контактная информация

Email: andrey@shestakovyachtsales.com

Web: shestakovyachtsales.com

Телефоны

Краснодарский край: **+7(918)465-66-44**

США, Майами, Флорида: **+1(954)274-4435**

Время работы

Понедельник – Суббота: **9:00 - 21:00**
EDT

Воскресенье: **Закрито**

Адрес



Harbour Towne Marina, 850 NE 3rd St,
STE 213, Dania, FL 33004