

ANAZAO — MAINSHIP



Судостроитель: MAINSHIP

Год постройки: 2009

Модель: Траулер

Цена: **ЦЕНА ЯХТЫ ПО ЗАПРОСУ**

Местонахождение: United States

Длина общая: 41' 4" (12.60m)

Ширина: 14' 2" (4.32m)

Мин. осадка: 3' 8" (1.12m)

Крейс. скорость: 12 Kts. (14 MPH)

Макс. скорость: 16 Kts. (18 MPH)

Купить **Anazao — MAINSHIP** а также выбрать подходящую вам яхту из нашего каталога яхт вам поможет опытный яхтенный брокер Андрей Шестаков. На сегодняшний день компания **Shestakov Yacht Sales Inc.** имеет большое количество яхт в собственном списке продаж, а также тесно сотрудничает со всеми крупными яхтенными производителями по всему миру.

Для того чтобы купить яхту **Anazao — MAINSHIP** а также проконсультироваться по любому вопросу связанному с покупкой, продажей, чартером яхт позвоните по телефону **+7(918)465-66-44**.

ОГЛАВЛЕНИЕ

ОГЛАВЛЕНИЕ	2
ХАРАКТЕРИСТИКИ	3
Обзор	3
Основная информация	3
Размеры	3
Скорость, вместимость и масса	3
Размещение	3
Корпус и палуба	4
Информация о двигателе	4
ПОДРОБНОЕ ОПИСАНИЕ	5
Description	5
Accommodations	5
Dinghy, Plus	6
Additional Information	6
Исключения	7
Отказ от ответственности	7
ФОТОГРАФИИ	9
КОНТАКТЫ	18
Контактная информация	18
Телефоны	18
Время работы	18
Адрес	18

ХАРАКТЕРИСТИКИ

Обзор

Turn key Mainship 40 Expedition Trawler with very low hours and all service and maintenance up to date. She is extremely economical with her single Yanmar diesel and very well equipped with both bow and stern thrusters. The Mainship 40 Expedition Trawler is perhaps the most accommodating live-aboard cruiser of her size. This fine example includes the desirable two stateroom layout, dual stations, flybridge summer galley, and AB ten foot dinghy with 4 stroke mercury and power assist electric lift.

Основная информация

Тип судна: Траулер	Модельный год: 2009
Год постройки: 2009	Страна: United States
Открытая палуба мостика: Да	Кубрик: Да

Размеры

Длина общая: 41' 4" (12.60m)	Ширина: 14' 2" (4.32m)
Мин. осадка: 3' 8" (1.12m)	Трапы: 19' 2" (5.84m)

Скорость, вместимость и масса

Крейс. скорость: 12 Kts. (14 MPH)	Макс. скорость: 16 Kts. (18 MPH)
Водоизмещение: 24000 Pounds	Вместимость воды: 130 Gallons
Вместимость сточного бака: 47 Gallons	Объем топливного бака: 300 Gallons

Размещение

Всего кают: 2	Всего ком. состава: 1
----------------------	------------------------------

Корпус и палуба

Материал корпуса: Fiberglass

Комплектация корпуса: Semi-Displacement

Информация о двигателе

Двигатели: 1

Производитель: Yanmar

Модель: 6LY3-UTP

Тип двигателя: Inboard

Тип топлива: Diesel

ПОДРОБНОЕ ОПИСАНИЕ

Description

Turn key Mainship 40 Expedition Trawler with very low hours and all service and maintenance up to date. She is extremely economical with her single Yanmar diesel and very well equipped with both bow and stern thrusters. The Mainship 40 Expedition Trawler is perhaps the most accommodating live-aboard cruiser of her size. This fine example includes the desirable two stateroom layout, dual stations, flybridge summer galley, and AB ten foot dinghy with 4 stroke mercury and power assist electric lift.

Accommodations

Salon: Entering the salon from the cockpit via the patio type door with screen door, to port are two leather easy chairs with ottomans, followed by the "L" shaped galley. To starboard is the recessed AC/DC panel with a pull-out Sole' 26" TV on a pivot that otherwise would cover the panel. Also present is a Bose CD player. Next is the 6' "L" shaped settee with its 24" X 21 1/2" Hi-Lo dining table. The salon has 6'10" headroom and teak and holly sole. The "L" portion of the settee backs to the 43" wide double lower helm seat with underneath storage. There is a 24' wood steering wheel and a side entry door leading out from the helm station.

Galley: Corian counter Dual stainless steel deep sinks Princess three burner stove with oven and a 3/4 top cover cutting board Vitrifrigo refrigerator freezer combination LG Microwave oven and coffee maker combo Atwood water heater Fire extinguisher

Guest Stateroom:

Going forward from the salon on the port side is the guest stateroom with over/under 5'11" bunks. There are three overhead lockers above the top bunk and a side closet. There is an opening bulkhead port and overhead 10" X 15" Bomar hatch. Headroom is 5'11".

Head:

Across from the guest stateroom it has access doors from the companionway and the master stateroom. It has a separate shower stall with door and molded seat. The shower head is on a height adjustment bar.

Corian counter with underneath storage 11 1/2" round stainless steel sink Jabsco quiet flush electric m.s.d. Tank monitor 110 volt outlet 10" X 15" overhead hatch

Master Stateroom:

At the forward section of the boat with 6'3" headroom.

Centerline island 6'3" berth Two large lockers to portside One hanging locker to starboard
Privacy doors to companionway and head 21" X 21" Bomar hatch Two opening ports

Dinghy, Plus

Dinghy, Plus:

9'8" AB Navigo 10 inflatable with Euro Helm seating package. This is an adjustable 16" X 34" vinyl seat with folding backrest, under seat storage plus tilt-away steering fold down helm and seat for easy storage.

Trim tabs 9 amp gel battery with small battery box 75 quart Igloo cooler Mercury 15 HP 4 stroke engine with SE200 Sport fin attachment Stainless steel manual Seawise Marine engine and dinghy davit system. Milwaukee 18 volt right angle cordless drill retro kit for conversion from manual to electric winch system

Additional Information

Electronics: Autopilot GPS Navigation center Repeater(s) Depthsounder VHF Radar Plotter Wind speed and direction Compass **Inside Equipment:** Oven Microwave oven Deep freezer Hot water Air conditioning Refrigerator Bow thruster Battery charger Stern thruster Electric head Heating Sea water pump **Electrical Equipment:** Generator Shore power inlet **Outside Equipment/Extras:** Swimming ladder Davits Outboard engine brackets Cockpit table Cockpit shower Tender

Bow:

The bow pulpit houses double stainless steel anchor chocks fitted with a plow anchor with chain and rode. The anchor is controlled by a Lewmar recessed electric winch with two step switches. Aft of the windlass is a stainless steel samson post and rawwater washdown. A small locker to starboard contain two 30 amp power inlets. The three piece center windows have three windshield wipers and the middle window opens for ventilation. The front and partial sides are covered with a sun diffusing screen and above the windows are dual horns.

Cockpit:

Swim platform is outside the transom with the attachments for the dingy and outboard (see section on Dinghy). A 22" X 29" outward opening transom door provides access to the swim platform. A 5'3" storage locker is built into the transom and there are P & S fold down entry steps. In a locker under the stairs is a hot and cold Freshwater shower. A hatch in the center of the cockpit sole provides access to the 9 Kw Kohler generator with 12 volt generator battery, Xchange-r oil change system control and Sea Fire auto fire system.

Flybridge:

Accessed via the molded staircase on the starboard side that has a canvas cover to close off the upper deck. The hardtop provides 6'8" headroom and has four sided isenglass. Running the length of the flybridge is an "L" shaped portside lounge that is 6'6" long and 28" wide. The starboard lounge is 6'2" long and also 28" wide. In the center is a starboard material table that opens to 24" X 42". Pioneer stereo with two speakers. 21" X 25" door between bridge access and aft deck Aft of the flybridge is the aft deck with two additional stereo speakers. In the center is the radar mast that is pinned to lay down to shorten bridge height. It has the radome, anemometer and two deck lights. On the port quarter is the "summer galley" consisting of Magma propane grill, Veritfrigo ice maker, 11" stainless steel sink with pull down cover and a storage locker. There is a 23 1/2" round table at the aft part of the deck and a canvas mesh apron surrounds the aft deck rails.

Electronics:

Lower Helm:

Raymarine E120 24 mile 18" Radar, GPS, Plotter, Bottom Machine Gulf of Mexico Platinum chip Raymarine 8002 Smart Controller auto pilot Yanmar i560IE engine multi gauge Danforth compass Sirius SR100 weather Full function VHF remote Yanmar electronic shift control Side Power dual thrusters control with remote

Upper Helm:

Raymarine E80 interface Raymarine ST8002 auto pilot Raymarine ST40 Wind Yanmar i5601IE Multi engine gauge Standard Horizon Matrix 6X2150 VHF (New) Danforth compass Trim tab control Side Power Dual thruster control

Engine Space:

(4) 8D Batteries Kohler 9 Kw Generator with 44 hours Generator and engine battery switches Accumulator tank Sea Fire automatic fire system (one also in generator space) Dripless shaft seal Tru Charge 401

Исключения

При продаже яхты исключаются личные вещи владельца.

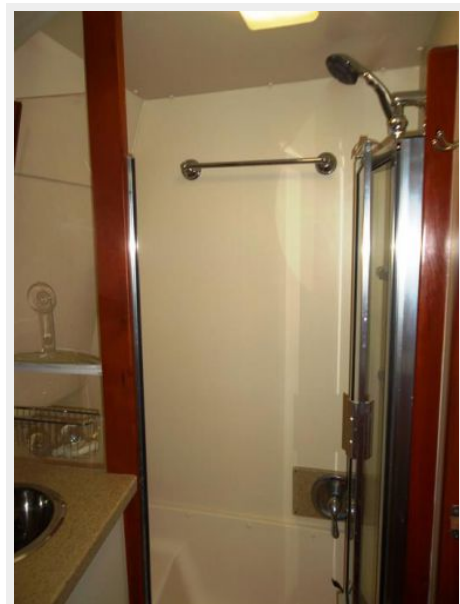
Отказ от ответственности

Компания предоставляет описание судна или яхты добросовестно, но не может гарантировать точность этой информации, а также не ручается за техническое состояние. Покупатель должен проинструктировать своих агентов или оценщиков исследовать представленную информацию более подробно, по собственному желанию. Продажа судна или яхты, изменение цены или снятие с продажи будет происходить без

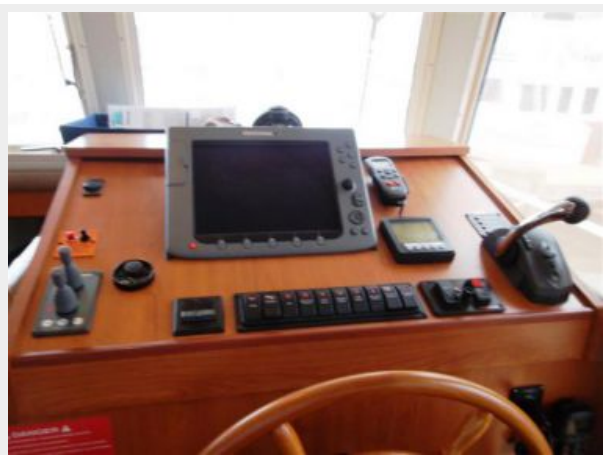
предварительного уведомления.

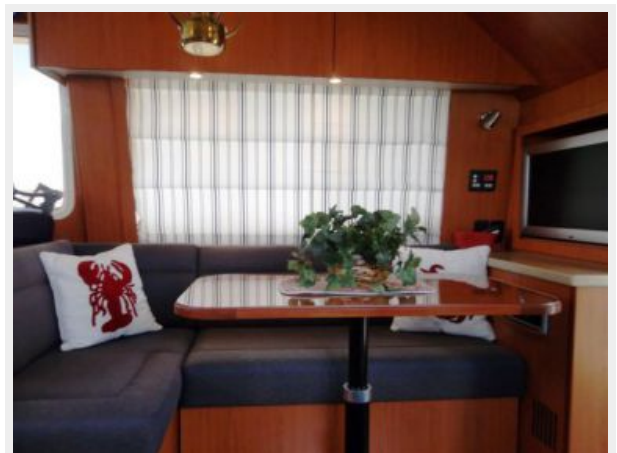
ФОТОГРАФИИ

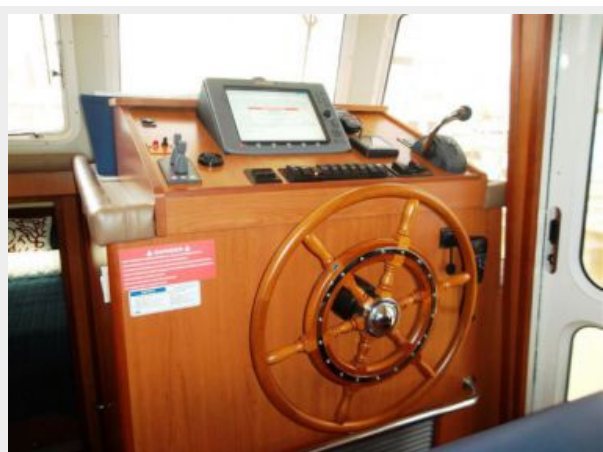
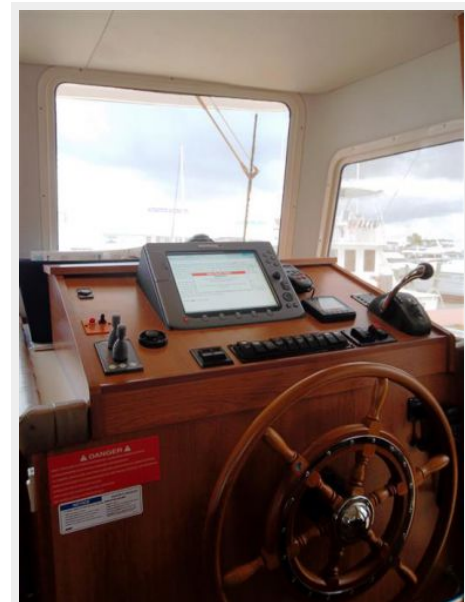
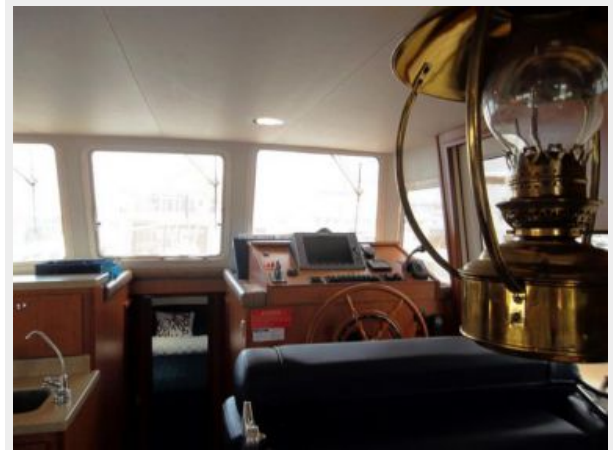


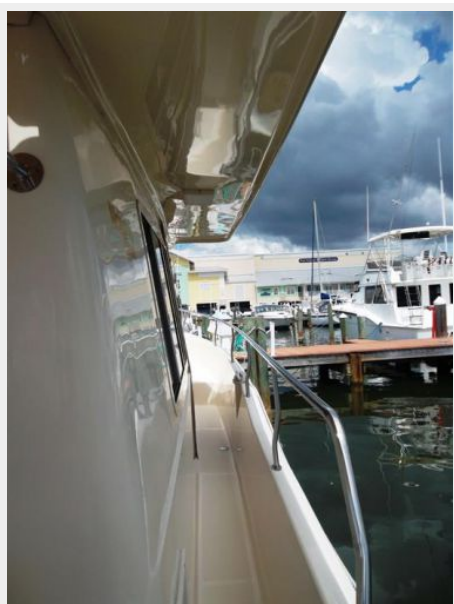


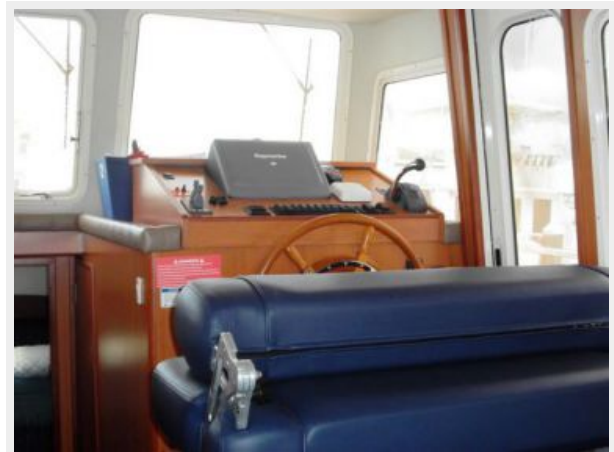
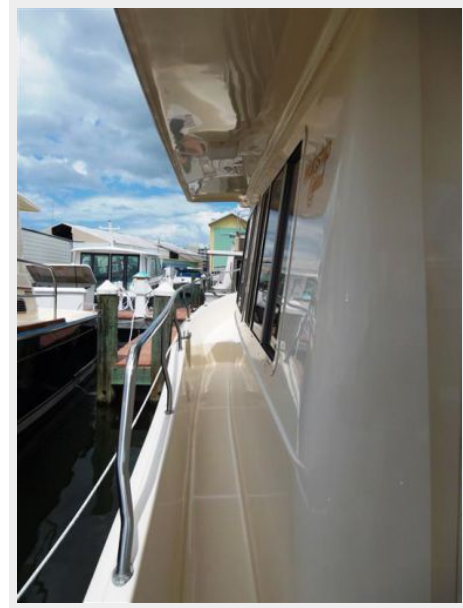














КОНТАКТЫ

Андрей Шестаков (Andrey Shestakov) – ведущий яхтенный брокер отдела продаж яхт и судов компании Shestakov Yacht Sales Inc. Официальный представитель Shestakov Yacht Sales Inc. для русскоговорящих клиентов в центральном офисе компании в Майами/Форт Лодердейл/Флорида/США.

Контактная информация

Email: andrey@shestakovyachtsales.com

Web: shestakovyachtsales.com

Телефоны

Краснодарский край: **+7(918)465-66-44**

США, Майами, Флорида: **+1(954)274-4435**

Время работы

Понедельник – Суббота: **9:00 - 21:00**
EDT

Воскресенье: **Закрето**

Адрес



Harbour Towne Marina, 850 NE 3rd St,
STE 213, Dania, FL 33004