

IRONMAN — AZIMUT



Builder: [AZIMUT](#)

Year Built: 2014

Model: Motor Yacht

Price: PRICE ON APPLICATION

Location: United States

LOA: 100' 0" (30.48m)

Beam: 22' 9" (6.93m)

Max Draft: 6' 5" (1.96m)

Cruise Speed: 21 Kts. (24 MPH)

Max Speed: 26 Kts. (30 MPH)

Our experienced yacht broker, Andrey Shestakov, will help you choose and buy a yacht that best suits your needs **IRONMAN — AZIMUT** from our catalogue. Presently, at Shestakov Yacht Sales Inc., we have a wide variety of yachts available on our sale's list. We also work in close contact with all the big yacht manufacturers from all over the world.

If you would like to buy a yacht **IRONMAN — AZIMUT** or would like help answering any questions concerning purchasing, selling or chartering a yacht, please call **+1(954)274-4435**

TABLE OF CONTENTS

TABLE OF CONTENTS	2
SPECIFICATIONS	3
Overview	3
Basic Information	3
Dimensions	3
Speed, Capacities and Weight	3
Accommodations	4
Hull and Deck Information	4
Engine Information	4
DETAILED INFORMATION	5
Accommodations	5
Electrical Equipment	5
Electronics	5
Mechanical	6
Deck Equipment	6
Exclusions	6
Disclaimer	6
PHOTOS	7
CONTACTS	17
Contact details	17
Telephones	17
Office hours	17
Address	17

SPECIFICATIONS

Overview

Gorgeous 5 stateroom with Twin 2200 hp MTUs. Spacious layout with luxurious accommodations and enormous flybridge for endless hours of fun in the sun!

Basic Information

Category: Motor Yacht

Sub Category: Flybridge

Model Year: 2014

Year Built: 2014

Country: United States

Fly Bridge: Yes

Cockpit: Yes

Dimensions

LOA: 100' 0" (30.48m)

Beam: 22' 9" (6.93m)

Max Draft: 6' 5" (1.96m)

Speed, Capacities and Weight

Cruise Speed: 21 Kts. (24 MPH)

Max Speed: 26 Kts. (30 MPH)

Displacement: 253531.6013 Pounds

Water Capacity: 528 Gallons

Holding Tank: 422 Gallons

Fuel Capacity: 3909 Gallons

Accommodations

Total Cabins: 5

Sleeps: 10

Total Heads: 6

Crew Cabin: 3

Crew Sleeps: 4

Crew Heads: 3

Hull and Deck Information

Hull Material: Fiberglass

Hull Color: White

Hull Designer: Azimut

Engine Information

Engines: 2

Manufacturer: MTU

Model: 16V 2000M84

Engine Type: Inboard

Fuel Type: Diesel

DETAILED INFORMATION

Accommodations

This luxurious 100 Grande boasts a spacious layout which has 5 luxurious Owners/Guest Staterooms including an on-deck master plus crew.

Electrical Equipment

- Twin Kohler 40 kw 220 v, 50 Hz three phase gens (port 1585, starboard 1181 as of 3/9/15)
- ZF3060V Inverter
- ASEA AC 60 Q 3-2 frequency converter
- ASEA AC18_3L frequency converter for internal appliances & US plugs
- Anchor windlass

Electronics

Upper Helm:

- Furuno NavNet v x 2 C-Map NT MAX SD
- Furuno NavPilot
- Furuno Digital heading display
- Furuno FI50 Rudder
- ABT Trac thruster control system (bow & stern)
- ITT Jabsco searchlight control
- Various Electronic Commands Board
- Azimut 100F Grande Interphone Control
- Furuno HS-4721 VHF
- Zenith compass

Lower Helm:

- Furuno GPS display
- Azimut 100F Grande Monitoring & Control System Display
- ABT Trac Digital Stabilizer Control
- Wiper controls
- Furuno Digital Navigation Heading Display
- (2) MTU Engine Monitors (MTU electronic throttle)
- ABT Trac pump select
- Furuno NavPilot
- Furuno FI-50 Rudder
- Furuno NavNet control

- ABT Trac thruster control station
- Azimut 100 Grande Interphone
- Alpine CDE-130R stereo system
- Furuno FM-4721
- Furuno HS-4721 hand held unit

Mechanical

- Hydraulic Swim Platform - operated from Sea Energy Control Panel
- Hydraulic Gangway - starboard side of transom - operated from Sea Energy Control Panel
- TRAC 16" Bow thruster - joystick controlled
- 19200 btu/h VECO air conditioning system
- TRAC 300 Stabilizer system
- Watermaker
- Sea water fire fighting system
- Fuel transfer system

Deck Equipment

- Cradle for n.1 Jet ski Yamaha FXHO on flybridge
- Cradle for tender
- 8 step Marquipt sea stair ladder
- Passerelle
- Fixed aft ladder
- Textelline windshield cover and side covers for pilothouse

Exclusions

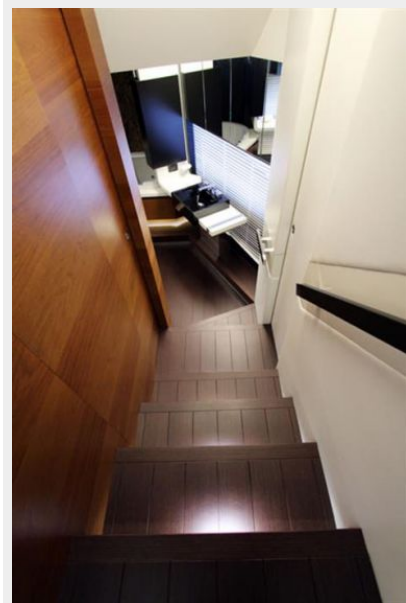
Owner's personal belongings.

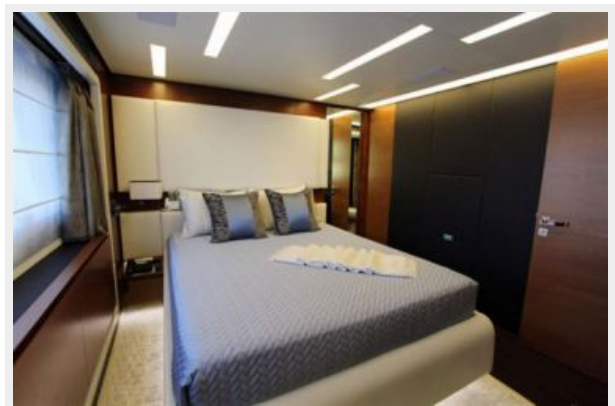
Disclaimer

The Company offers the details of this vessel or yacht in good faith but cannot guarantee or warrant the accuracy of this information nor warrant the condition of the vessel. A buyer should instruct his representatives, agents, or his surveyors, to investigate such details as the buyer desires validated. This vessel or yacht is offered subject to prior sale, price change, or withdrawal without notice.

PHOTOS

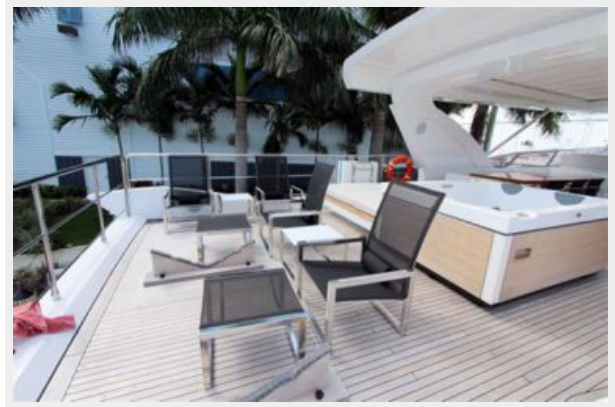




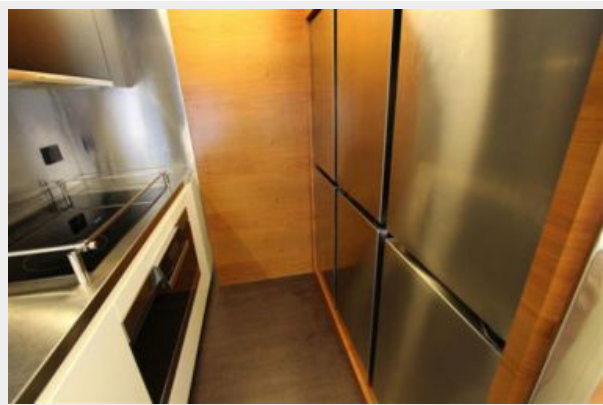
















CONTACTS

Andrey Shestakov, leading yacht broker of the sales department of Shestakov Yacht Sales Inc. Shestakov Yacht Sales Inc., the official representative of the Miami/Fort Lauderdale FL headquarters.

Contact details

Email: andrey@shestakovyachtsales.com

Web: shestakovyachtsales.com/en/

Telephones

USA: +1(954)274-4435

Office hours

Monday – Saturday: **9:00 - 21:00** EDT

Sunday: **closed**

Address



Harbour Towne Marina, 850 NE 3rd St,
STE 213, Dania, FL 33004