

PAX RETURN — OCEAN ALEXANDER



Builder: OCEAN ALEXANDER

Year Built: 1993

Model: Motor Yacht

Price: PRICE ON APPLICATION

Location: United States

LOA: 44' 0" (13.41m)

Beam: 13' 11" (4.24m)

Max Draft: 3' 2" (0.97m)

Our experienced yacht broker, Andrey Shestakov, will help you choose and buy a yacht that best suits your needs **Pax Return — OCEAN ALEXANDER** from our catalogue. Presently, at Shestakov Yacht Sales Inc., we have a wide variety of yachts available on our sale's list. We also work in close contact with all the big yacht manufacturers from all over the world.

If you would like to buy a yacht **Pax Return — OCEAN ALEXANDER** or would like help answering any questions concerning purchasing, selling or chartering a yacht, please call **+1(954)274-4435**

TABLE OF CONTENTS

TABLE OF CONTENTS	2
SPECIFICATIONS	3
Overview	3
Basic Information	4
Dimensions	4
Speed, Capacities and Weight	5
Accommodations	5
Hull and Deck Information	5
Engine Information	5
PHOTOS	6
CONTACTS	14
Contact details	14
Telephones	14
Office hours	14
Address	14

SPECIFICATIONS

Overview

PAX RETURN has arrived at our Seattle docks. See her here during the September Seattle Boat Show.

Lots of great cruising features and she shows the care she has received from a knowledgeable and seasoned skipper and family.

- twin 320 CATS
- 2.5ft hull extension and storage in the transom step
- Custom hardtop w/hard windshield and enclosure
- Sundeck hardtop w/enclosure
- Hard wing doors for sundeck
- Webasto hydronic diesel furnace
- **ACCOMMODATIONS** include:
 - Center island berth master cabin
 - V-berth cabin w/filler piece
 - Vacu-Flush toilets
 - Stall shower aft, wet head forward
 - Dinette converts to sleeping
 - Custom L-settee in salon
 - Recliner w/ottoman in salon
 - Burmese teak cabinetry and joinery throughout
 - Teak parquet flooring
 - 32" Samsung TV w/SAT TV antenna
 - DVD player
 - AM/FM/CD stereo
 - Aft sun deck furniture w/enclosure
 - Zip in screen doors
- **GALLEY** includes:
 - New granite countertops w/brass edging
 - New Force 10 range and oven
 - Newer Nova Cool RF6200 upright refer/freezer
 - Double stainless steel sink
- **ELECTRONICS** include:
 - Nobeltec 11 Nav software
 - ComNav AIS ID system
 - Raytheon SL70 radar
 - Autohelm ST71000 AP w/remote
 - Autohelm ST50 Tri-data w/repeater
 - Uniden VHF

- ICOM IC-M1235 VHF
- GPS
- Color fish finder
- **ELECTRICAL** includes:
 - Westerbeke 8 kW generator
 - Heart 2.0 kW inverter w/Link battery monitor
 - New digital MultiPlus Victron battery/inverter charger
 - Aft sun deck top load freezer
- **DECK** includes:
 - Mooring package
 - Safety package
 - Nick Jackson "pickle fork" transom davit
 - 1500 lb DC windlass w/300' chain rode and 65 lb CQR anchor
 - Fresh and salt water wash down(s)
 -

Exclusions

All personal property is excluded unless specifically identified and included in the sale agreement and listing specifications. Personal property refers to all items not permanently attached to the vessel including but not limited to: artwork, furnishings, and recreational or entertainment items. Advertisements, marketing materials, and/or other photography may depict the vessel with personal property, however, such personal property is excluded unless otherwise specifically included as provided herein.

Basic Information

Category: Motor Yacht

Model Year: 1993

Year Built: 1993

Country: United States

Dimensions

LOA: 44' 0" (13.41m)

Beam: 13' 11" (4.24m)

Max Draft: 3' 2" (0.97m)

Speed, Capacities and Weight

Water Capacity: 150 Gallons

Holding Tank: 45 Gallons

Fuel Capacity: 400 Gallons

Accommodations

Total Cabins: 2

Hull and Deck Information

Hull Material: Fiberglass

Engine Information

Engines: 2

Manufacturer: Caterpillar

Model: 3208 TA

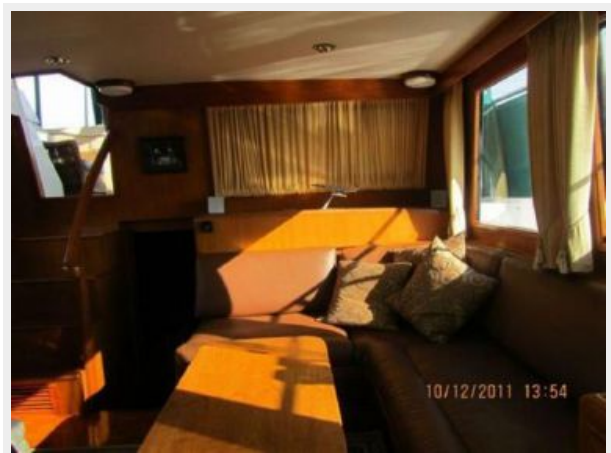
Fuel Type: Diesel

PHOTOS

















CONTACTS

Andrey Shestakov, leading yacht broker of the sales department of Shestakov Yacht Sales Inc. Shestakov Yacht Sales Inc., the official representative of the Miami/Fort Lauderdale FL headquarters.

Contact details

Email: andrey@shestakovyachtsales.com

Web: shestakovyachtsales.com/en/

Telephones

USA: +1(954)274-4435

Office hours

Monday – Saturday: **9:00 - 21:00** EDT

Sunday: **closed**

Address



Harbour Towne Marina, 850 NE 3rd St,
STE 213, Dania, FL 33004