

RAM — OVERMARINE - MANGUSTA



Builder: OVERMARINE - MANGUSTA

Year Built: 2009

Model: Motor Yacht

Price: PRICE ON APPLICATION

Location: Spain

LOA: 130' 0" (39.62m)

Beam: 25' 8" (7.82m)

Max Draft: 5' 3" (1.60m)

Cruise Speed: 34 Kts. (39 MPH)

Max Speed: 41 Kts. (47 MPH)

Our experienced yacht broker, Andrey Shestakov, will help you choose and buy a yacht that best suits your needs **RAM — OVERMARINE - MANGUSTA** from our catalogue. Presently, at Shestakov Yacht Sales Inc., we have a wide variety of yachts available on our sale's list. We also work in close contact with all the big yacht manufacturers from all over the world.

If you would like to buy a yacht **RAM — OVERMARINE - MANGUSTA** or would like help answering any questions concerning purchasing, selling or chartering a yacht, please call **+1(954)274-4435**

TABLE OF CONTENTS

TABLE OF CONTENTS	2
SPECIFICATIONS	3
Basic Information	3
Dimensions	3
Speed, Capacities and Weight	3
Accommodations	3
Hull and Deck Information	3
Engine Information	4
DETAILED INFORMATION	5
Description	5
Accommodations	5
Audio And Visual Equipment	5
Electrical System	6
Electronics and Navigational Equipment	6
Engine /Mechanical Equipment	7
Tenders & Toys	7
Exclusions	7
Disclaimer	7
PHOTOS	8
CONTACTS	13
Contact details	13
Telephones	13
Office hours	13
Address	13

SPECIFICATIONS

Basic Information

Category: Motor Yacht

Model Year: 2009

Year Built: 2009

Country: Spain

Dimensions

LOA: 130' 0" (39.62m)

Beam: 25' 8" (7.82m)

Max Draft: 5' 3" (1.60m)

Speed, Capacities and Weight

Cruise Speed: 34 Kts. (39 MPH)

Max Speed: 41 Kts. (47 MPH)

Water Capacity: 792.516156 Gallons

Fuel Capacity: 6340.129248 Gallons

Accommodations

Total Cabins: 4

Total Heads: 9

Captain Cabin: True

Crew Heads: 6

Hull and Deck Information

Hull Material: GRP

Hull Configuration: Planing

Engine Information

Engines: 2

Manufacturer: MTU

Model: 16V 4000 M93

Engine Type: Inboard

Fuel Type: Diesel

DETAILED INFORMATION

Description

This superyacht designed with racy, determined lines is the clear example of the ability of Overmarine shipyard of building a yacht able reach high performance with a top speed 41 knots, keeping absolute comfort onboard for all guests. "RAM", hull no. 15 of the Mangusta 130 production series, is the first unit built with the latest upgraded hull which, with new keel, giving it a much more comfortable and direct steering line through the sea compared to previous Mangusta 130. The cruise speed of the boat is 34-35 knots at 1850 rpm.

Performances are also improved by new editions MTU 4000 engines installed which enable the boat being faster compared to others of the same series. What is even more important is that "RAM" is the result of mixing seaworthiness and speed together with accurate interior design, high level of comfort with great development of volumes.

This truly one-of-a-kind luxury yacht features numerous spaces, an enormous saloon and dining area in the upper deck, with a front pilot station. A media room equipped with the latest technology audio/video equipment is located on the lower deck, together with accommodation which can host up to 9 guests in luxurious cabins – master astern, front VIP and two double cabins, one of which has a third Pullman bed.

Accommodations

Number of Cabins: 4

Total Guests Sleeping: 9

Cabin Configuration: 3 Double, 1 Twin + 1 Pullman

Master Cabin with Sofa, Vanity, Sofa Lounge, Ensuite Bathroom with Entertainment area with sofa lounge

Audio And Visual Equipment

Master : TV Plasma, DVD/CD/HiFi, Phone,

VIP 1 : TV Plasma, DVD/CD/HiFi, Phone, Ensuite Bathroom

VIP 2 : TV Plasma, DVD/CD/HiFi, Phone, Ensuite Bathroom

Twin with a single bed and a pullman: TV LCD, DVD/CD/HiFi, Phone, Ensuite Bathroom

Bridge deck and dining area: Amplifier, Loudspeakers, volume control

Crew cabin: Television/VCR, HiFi

Electrical System

The electrical power supplies on board are based on:

- Nr. 02 KOHLER generator power 70EFOZ – 380 VAC 3phase 68kW – 50 Hz
- Shore power 380 VAC 3-phase 50 Hz of 40kVA
- 24 V DC battery banks
- 24 to 12 VDC converters for 12 volt consumers

Electronics and Navigational Equipment

Radar(1): SNP Forniture

Autopilot(1): SNP Forniture

Compass(1): SNP Forniture

Rudder feedback unit(1): Kamewa Supply

Rudder Angle Indicator(1): Kamewa Supply

Plotter/DGPS(1): SNP Forniture

Video depth sounder(1): SNP Forniture

Performance measurement system(1): SNP Forniture

VHF Radio(1): SNP Forniture

Satcom telephone(1): SNP Forniture

Telephone exchange(1): SNP Forniture

GSM Telephone(1): SNP Forniture

Laundry room – Washing machine and dryer

Galley- Oven, hot plates, exhaust hood, microwave with stainless steel font, dishwasher, ice cube maker

Deck – ice cube maker, refrigerator

Engine /Mechanical Equipment

Main Engines: 2 x MTU Diesel Engines 16 V 4000 M93L – 2440kW (4610 HP) at 2100 rpm

Generators: 2 x KHOLER 70EFOZ marine generators, each having a capacity of 68 kW, 380 VAC, 50 Hz, three phase

Extended Engine Warranty Hours as of May 2015 Main Engines: 650 Generators: 1500

Tenders & Toys

Jet Tender Castoldi Water Jet 5m

Seadoo Jet Ski RXXP 255hp

Sea Bob

Snorkelling , Water Ski, Wake Board, Donut, fishing equipment

Exclusions

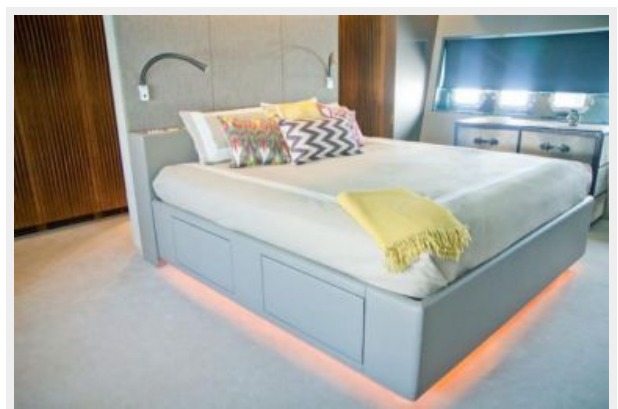
Owner's personal belongings.

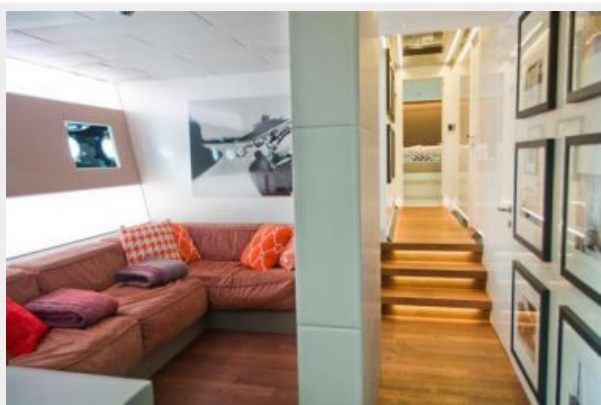
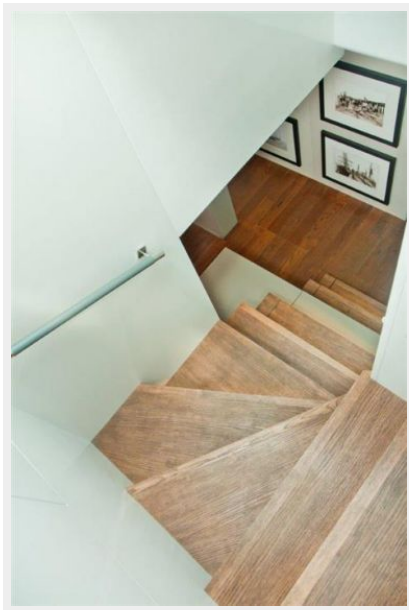
Disclaimer

The Company offers the details of this vessel or yacht in good faith but cannot guarantee or warrant the accuracy of this information nor warrant the condition of the vessel. A buyer should instruct his representatives, agents, or his surveyors, to investigate such details as the buyer desires validated. This vessel or yacht is offered subject to prior sale, price change, or withdrawal without notice.

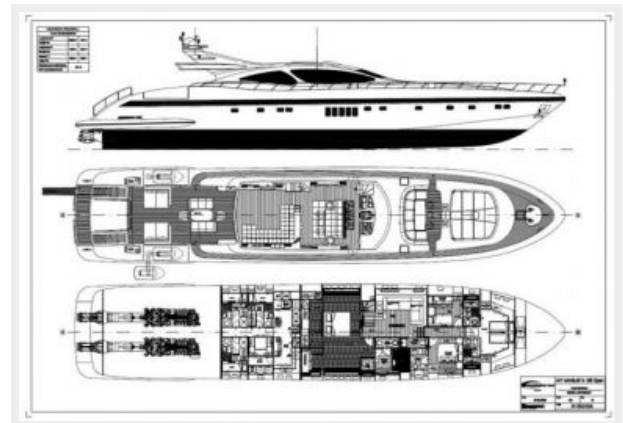
PHOTOS











CONTACTS

Andrey Shestakov, leading yacht broker of the sales department of Shestakov Yacht Sales Inc. Shestakov Yacht Sales Inc., the official representative of the Miami/Fort Lauderdale FL headquarters.

Contact details

Email: andrey@shestakovyachtsales.com

Web: shestakovyachtsales.com/en/

Telephones

USA: +1(954)274-4435

Office hours

Monday – Saturday: **9:00 - 21:00** EDT

Sunday: **closed**

Address



Harbour Towne Marina, 850 NE 3rd St,
STE 213, Dania, FL 33004