

DEREGULATION V — SABRELINE



Builder: SABRELINE

Year Built: 2002

Model: Cruiser

Price: PRICE ON APPLICATION

Location: United States

LOA: 36' 0" (10.97m)

Max Draft: 3' 4" (1.02m)

Cruise Speed: 26 Kts. (30 MPH)

Max Speed: 30 Kts. (35 MPH)

Our experienced yacht broker, Andrey Shestakov, will help you choose and buy a yacht that best suits your needs **DEREGULATION V — SABRELINE** from our catalogue. Presently, at Shestakov Yacht Sales Inc., we have a wide variety of yachts available on our sale's list. We also work in close contact with all the big yacht manufacturers from all over the world.

If you would like to buy a yacht **DEREGULATION V — SABRELINE** or would like help answering any questions concerning purchasing, selling or chartering a yacht, please call **+1(954)274-4435**

TABLE OF CONTENTS

TABLE OF CONTENTS	2
SPECIFICATIONS	3
Overview	3
Basic Information	3
Dimensions	3
Speed, Capacities and Weight	3
Accommodations	4
Hull and Deck Information	4
Engine Information	4
DETAILED INFORMATION	5
Accommodations	5
Galley	5
Electronics	5
Electrical Equipment	5
Deck / Hull	6
Cockpit	6
Remarks	6
Exclusions	6
Disclaimer	7
PHOTOS	8
CONTACTS	11
Contact details	11
Telephones	11
Office hours	11
Address	11

SPECIFICATIONS

Overview

Traditional style interior of satin American Cherry with hand rubbed varnish, teak and holly cabin sole, matching wood grains and louvered locker doors. Opposite the galley is a U-shaped settee with cherry wood dining table and Samsung LCD TV mounted on forward bulkhead. Forward and to port is a large head with shower and Vacu-flush head, which can be accessed from the main salon or the master stateroom. Master stateroom is forward has centerline island berth with hinged top and drawers under, cedar lined hanging locker, large overhead hatch and SS opening portholes.

Basic Information

Category: Cruiser

Sub Category: Express

Model Year: 2002

Year Built: 2002

Country: United States

Dimensions

LOA: 36' 0" (10.97m)

LWL: 32' 2" (9.80m)

Max Draft: 3' 4" (1.02m)

Speed, Capacities and Weight

Cruise Speed: 26 Kts. (30 MPH)

Max Speed: 30 Kts. (35 MPH)

Displacement: 18500 Pounds

Water Capacity: 100 Gallons

Holding Tank: 30 Gallons

Fuel Capacity: 300 Gallons

Accommodations

Total Cabins: 2

Total Berths: 2

Sleeps: 4

Total Heads: 2

Hull and Deck Information

Hull Material: Fiberglass

Engine Information

Manufacturer: Yanmar

Model: 6LY

Engine Type: Outboard

DETAILED INFORMATION

Accommodations

Traditional style interior of satin American Cherry with hand rubbed varnish, teak and holly cabin sole, matching wood grains and louvered locker doors. Opposite the galley is a U-shaped settee with cherry wood dining table and Samsung LCD TV mounted on forward bulkhead. Forward and to port is a large head with shower and Vaccu-flush head, which can be accessed from the main salon or the master stateroom. Master stateroom is forward has centerline island berth with hinged top and drawers under, cedar lined hanging locker, large overhead hatch and SS opening portholes.

Galley

- 2-Burner propane cooktop w/convection/microwave oven under
- Corian countertop
- AC/DC Refrigerator/freezer under counter
- SS Sink w/single lever faucet
- Large SS opening ports

Electronics

- Raymarine 75CRC color radar/plotter
- Raymarine 760 cocolor fish finder
- Simrad autopilot
- Icom 502 VHF radio
- Glendinning engine SYCN
- XM radio

Electrical Equipment

- Heart 2500 inverter/charger
- AM/FM CD Player, AMP, 6 Speakers
- (2) SS Remote spotlights (on arch)
- (2) Cockpit spreader lights
- Racor fuel filters 16k BTU air conditioning
- Mincerator pump
- Bennett trim tabs
- Windshield wipers
- Dockside TV & electrical hook-ups

- Air conditioning
- 6KW Mastervolt Generator 127 hours

Deck / Hull

Hull was painted Stars and Stripes blue awl grip in 2010. Decks are Sabre white non skid. Hull has 20 degree dead rise amidships and 14 degrees at the transom. Teak bow pulpit was shortened to stop even with bow deck and custom stainless steel bow roller was inlaid. Bow rail was also changed to go with lines of bow.

- Transom door
- Hot/Cold transom shower
- Muir VRC 1200 anchor windlass
- Suncor stainless steel anchor
- 150' Stainless steel anchor chain

Cockpit

Features raised L-shaped settee in port upper cockpit with teak table, to starboard is Pompanette helm seat with foot rest, helm with flush mount electronics, tilt wheel, large lower cockpit with a custom SS fender rack. Teak cockpit coaming, 2 flush mount rod holders stereo speakers, royal navy Sunbrella cockpit cushions.

Remarks

A clean, well maintained vessel that has just gone thru annual yard visit 10/14. Freshly waxed custom painted hull color gleams. All raw water intake hoses were renewed, oil coolers replaced, bilges were painted, cutlass bearings changed, props were balanced. Varnish and teak was sanded and sealed.

A true gentleman's cruiser. Survey ready!!

Priced to sell as owner has found his next boat.

Exclusions

Owner's personal belongings.

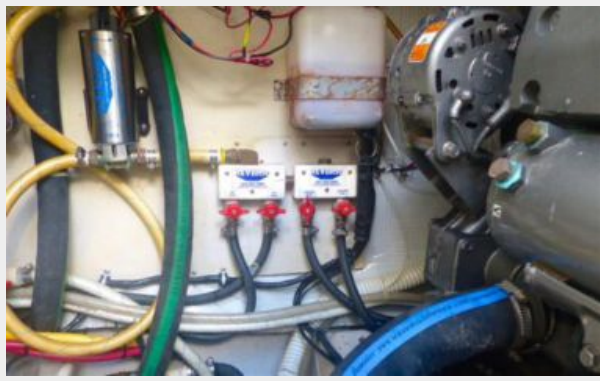
Disclaimer

The Company offers the details of this vessel or yacht in good faith but cannot guarantee or warrant the accuracy of this information nor warrant the condition of the vessel. A buyer should instruct his representatives, agents, or his surveyors, to investigate such details as the buyer desires validated. This vessel or yacht is offered subject to prior sale, price change, or withdrawal without notice.

PHOTOS







CONTACTS

Andrey Shestakov, leading yacht broker of the sales department of Shestakov Yacht Sales Inc. Shestakov Yacht Sales Inc., the official representative of the Miami/Fort Lauderdale FL headquarters.

Contact details

Email: andrey@shestakovyachtsales.com

Web: shestakovyachtsales.com/en/

Telephones

USA: +1(954)274-4435

Office hours

Monday – Saturday: **9:00 - 21:00** EDT

Sunday: **closed**

Address



Harbour Towne Marina, 850 NE 3rd St,
STE 213, Dania, FL 33004