

SECOND TIME — CRUISERS YACHTS



Судостроитель: [Cruisers Yachts](#)

Длина общая: 43' 0" (13.11m)

Год постройки: 2006

Модель: Крейсер

Цена: ЦЕНА ЯХТЫ ПО ЗАПРОСУ

Местонахождение: United States

Купить **Second Time — Cruisers Yachts** а также выбрать подходящую вам яхту из нашего каталога яхт вам поможет опытный яхтенный брокер Андрей Шестаков. На сегодняшний день компания **Shestakov Yacht Sales Inc.** имеет большое количество яхт в собственном списке продаж, а также тесно сотрудничает со всеми крупными яхтенными производителями по всему миру.

Для того чтобы купить яхту **Second Time — Cruisers Yachts** а также проконсультироваться по любому вопросу связанному с покупкой, продажей, чартером яхт позвоните по телефону **+7(918)465-66-44**.

ОГЛАВЛЕНИЕ

ОГЛАВЛЕНИЕ	2
ХАРАКТЕРИСТИКИ	5
Обзор	5
Основная информация	5
Размеры	5
Скорость, вместимость и масса	5
Размещение	6
Корпус и палуба	6
Информация о двигателе	6
ПОДРОБНОЕ ОПИСАНИЕ	7
Introduction	7
Salon	7
Galley	8
Master Stateroom	8
Master Head	8
Electronics & Helm	9
Cockpit	9
Electrical Equipment	9
Engines & Mechanical	10
Broker Comments	11
Deck & Hull	11
Исключения	11
Отказ от ответственности	11
ФОТОГРАФИИ	13
Salon / Dining	13
Salon	13
Salon Flooring	13
Bottle Storage	13

Control Panel	14
Galley	14
Galley	14
Galley	14
Galley	15
Galley	15
Galley Flooring	15
Galley Portholes	15
Master Stateroom	16
Master Stateroom	16
Master Stateroom	16
Stateroom TV	16
Stateroom Outlet	17
Stateroom Lighting	17
Master Stateroom Locker	17
Head	17
Head	18
Electronics	18
Electronics	18
Bridge Deck	18
Bridge Deck	19
Bridge Deck	19
Bridge Deck Seating	19
Second Time	19
Deck Storage	20
Deck Storage	20
Bow	20
Aft View	20
Engines	21

Engines	21
Second Time	21
Engines	21
Second Time	21
Second Time	21
КОНТАКТЫ	22
Контактная информация	22
Телефоны	22
Время работы	22
Адрес	22

ХАРАКТЕРИСТИКИ

Обзор

PRICE REDUCED \$35,000 FOR IMMEDIATE SALE!

Absolutely perfect condition!

Low hours - Full service log and documentation - 100% fresh water!

Second Time is by far the best Express Cruiser in the market today of her vintage. With less than 110 engine hours, 50 hrs on her 9kw Kohler generator, always stored undercover and 100% fresh water exposed, this is a diamond in the ruff!

Meticulously maintained she is ready for her new owner. No costly transition is necessary. The Cruisers Yacht is powered with the very reliable dual Volvo 8.1GXI 420hp engines. Quality real wood cabinetry complimented with beautiful interior design, this vessel will not disappoint!

Owner ready to sell!

Основная информация

Тип судна: Крейсер

Модельный год: 2007

Год постройки: 2006

Страна: United States

Размеры

Длина общая: 43' 0" (13.11m)

Скорость, вместимость и масса

Вместимость воды: 80 Gallons

Вместимость сточного бака: 40 Gallons

Объем топливного бака: 300 Gallons

Размещение

Всего кают: 1

Корпус и палуба

Материал корпуса: Fiberglass

Информация о двигателе

Двигатели: 2

Производитель: Volvo Penta

Модель: 8.1L GXI

Тип двигателя: Inboard

Тип топлива: Gas

ПОДРОБНОЕ ОПИСАНИЕ

Introduction

Impeccable condition!

Low hours - Full service log and documentation - 100% fresh water!

Second Time is by far the best Express Cruiser in the market today of her vintage. With less than 110 engine hours, 50 hrs on her 9kw Kohler generator, always stored undercover and 100% fresh water exposed, this is a diamond in the ruff!

Meticulously maintained she is ready for her new owner. The Cruisers Yacht is powered with the very reliable dual Volvo 8.1GXI 420hp engines. Quality real wood cabinetry complimented with beautiful interior design, this vessel will not disappoint!

Owner ready to sell!

Salon

The wide open single stateroom layout is ideal for entertaining or cruising as a couple. The interior appointments include natural wood cabinetry and Ultra-leather upholstery, as well as simulated teak & holly and carpeted flooring. Six vertical opening ports provide light and ventilation. The companionway to the salon is offset to starboard. There are two easy steps down into the salon. The entertainment center to port really does work well for entertaining! In addition to the TV and stereo, it provides lots of storage and generous solid surface counter space for serving food and beverages.

- Cherry treads on entry steps
- Custom carpet w/snap-in protection
- Cruisair SMX reverse cycle marine AC control
- Central vac system
- L-shaped sofa sleeper in salon
- Reclining sofa seats
- Solid cherry dinette table
- Bulk head and door for forward stateroom
- Custom bar stools
- KVH Track Vision satellite TV with receiver
- Vertical blinds on port & starboard
- Wine captain with (17) bottle storage
- Ventilating skylights with screens

Galley

- Built-in coffee maker
- Tappan microwave/convection oven
- EuroKera two-burner electric stove
- Amtico teak flooring
- Full-size Tundra fridge with separate freezer
- Double well stainless steel sink with Corian covers and spray faucet
- Hot and cold pressure water
- Custom cherry cabinets
- Solid surface Corian countertops
- Under and over counter storage

Master Stateroom

- Queen-size island berth
- Custom mattress
- Custom bedding & linens
- (2) Cedar-lined hanging closets
- (3) large drawers below island berth
- Upper port & starboard storage cabinets
- Adjustable reading lights
- Opening port & starboard portholes with screens
- Overhead hatch with blackout screen
- Private entry to head & shower
- Custom carpet with snap-in protection
- Sharp 13" HDTV built-in flat screen
- Blaupunkt MP3/CD stereo system
- Cruisair SMX reverse cycle marine AC controller

Master Head

- Separate shower stall with plexiglass doors and molded-in seat
- Techma head with electronic flush toilet
- Waste tank level indicator
- Macerator for overboard discharge
- Vanity with porcelain sink
- Hot & cold water pressure system
- Exhaust fan
- Overhead & under sink storage
- Custom towels
- 11 gallon hot water system

Electronics & Helm

- Excellent Visibility
- Double Captain/Mate Seat
- Swivel Settee
- Walk Through Windshield
- Raymarine C-120 color LCD GPS and chartplotter with lake chips
- Digital depth finder
- Rudder indicator
- ITT Jabsco remote search light helm control
- Side power bow thruster controller
- Rule high-water alarm indicator
- Fireboy automatic fire system
- Faria instrument gauges
- Keyless ignition system engine with touch pad
- Clarion CMD-4 AM/FM/CD/Sirius system with helm remote
- Hydraulic steering with adjustable tilt
- Bennett trim tab controls
- Ritchie integrated compass
- Twin windshield wipers
- 12V air horn and hour meters

Cockpit

- Transom boarding gate
- Integrated full-width swim platform with drained storage & concealed boarding ladder
- Fender storage trunk
- Cockpit wet bar with cold water spigot & sink
- U-line cockpit fridge with ice maker
- Cockpit seating with storage below
- Cockpit sun lounge and table
- Cockpit carpet
- Hot & cold cockpit shower

Electrical Equipment

- (2) 30amp shore power cords
- Macerator with overboard discharge
- 110V AC system
- 12V DC system
- Master AC/DC distribution panel with voltmeters and function displays
- Intel power battery charging system & monitor

- Cable TV system with gain control and inlet
- Battery switches
- (2) CruisAir reverse cycle AC & Heat systems (new in 2012)
- Bonding system w/zinc plate
- (5) New batteries
- Nibral propellers
- Battery parallel switch
- battery isolator
- (3) Bilge pumps with high water alarms
- Bronze seacocks and thru-hulls on all underwater fittings

Engines & Mechanical

The 8.1GXi is a modern engine with electronic fuel injection and electronic control for faster engine response and safe starting in all weather. A truly robust design and an advanced monitoring system ensures high reliability. The Duoprop drive with twin counter-rotating propellers delivers unbeatable acceleration and handling under all operating conditions. Power steering and trim are standard.

- Twin Volvo Penta 8.1L GXI with 20 HP each
- CO monitor alarms
- Engine room blowers
- Electric engine hatch
- Fuel crossover system
- Dripless shaft seals
- Fuel shut-off valves
- 12V engine room lighting and fiberglass diamond plate flooring
- Onan 9KW Diesel Generator
- Automatic Fire System
- Raw Water Strainers
- 26,000 BTU A/C w/Reverse Cycle Heat
- Dripless Shaft Logs
- Cylinder block and cylinder heads made of cast iron for good corrosion resistance
- Valve train consisting of single camshaft hydraulic valve lifters, push rods and two valves per cylinder
- (2) Adjustable rubber mounts, one on each side of the engine, and two between transom shield assembly and engine
- Pressure lubrication system with full-flow oil filter of spin-on type
- Fuel filter with water separator
- Electro-coated exhaust risers and manifolds
- ECM unit ensures constant optimum performance with diagnostic capability
- 75 A alternator with internal transistorized voltage drop compensation
- Audio alarm kit -- engine oil pressure and temperature as well as exhaust overheat

Broker Comments

Gently used fresh water boat with only 103 hours - boat was dealer demo boat w/26 hours when purchased in Sept 2007. Kohler 10Kw Generator w/~55 hours. Boat is V-Drive with capacity for 300 gallons fuel, 80 gallons fresh water and 40 gallons of waste storage.

She's well maintained and in excellent condition!

Owner is serious about selling the boat and I look forward to discussing the details with you.

Deck & Hull

- Anchor rolling with mooring bit & cleat
- Maxwell windlass with hardware concealed under forward hatch
- Bow rope locker
- Welded stainless steel bow & side rails
- Fiberglass hardtop with enclosure and fixed skylight ,
- Walk-thru stainless steel windshield frame
- Adjustable double-wide helm seat with flip-up bolster
- Companion side lounge seats rotates to form forward facing seats
- Hydraulic engine hatch
- Camper top with curtains and screens
- Form fitting bow sunning pad
- Dockside fresh water connection
- Cabin entry door with overhead slider and security lock
- Stainless steel mooring cleats
- Navigation lights
- Cable connection for portable satellite TV
- (4) Clarion recessed sub-woofer speakers
- Recessed courtesy lights
- Integrated beverage holders

Исключения

При продаже яхты исключаются личные вещи владельца.

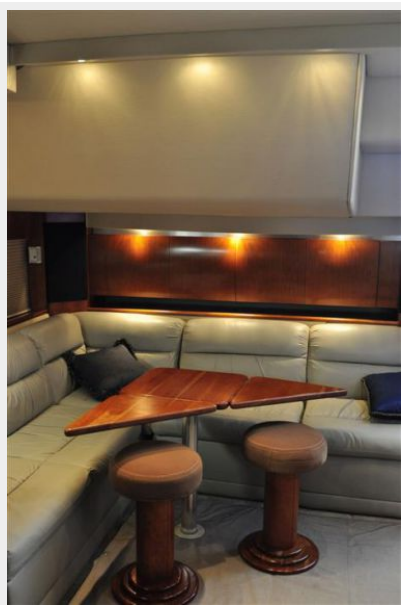
Отказ от ответственности

Компания предоставляет описание судна или яхты добросовестно, но не может гарантировать точность этой информации, а также не ручается за техническое состояние. Покупатель должен проинструктировать своих агентов или оценщиков исследовать представленную информацию более подробно, по собственному желанию.

Продажа судна или яхты, изменение цены или снятие с продажи будет происходить без предварительного уведомления.

ФОТОГРАФИИ

Salon / Dining



Salon



Salon Flooring



Bottle Storage



Control Panel



Galley



Galley



Galley



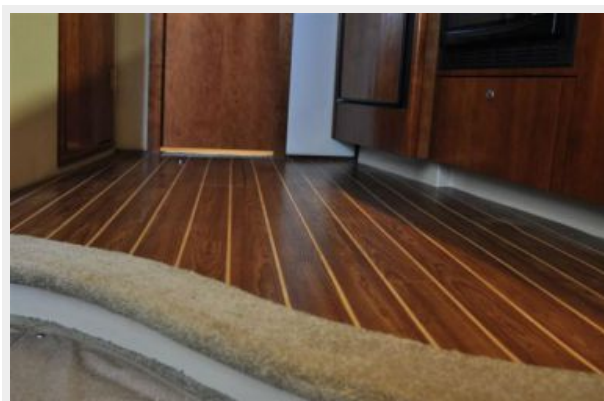
Galley



Galley



Galley Flooring



Galley Portholes



Master Stateroom



Master Stateroom



Master Stateroom



Stateroom TV



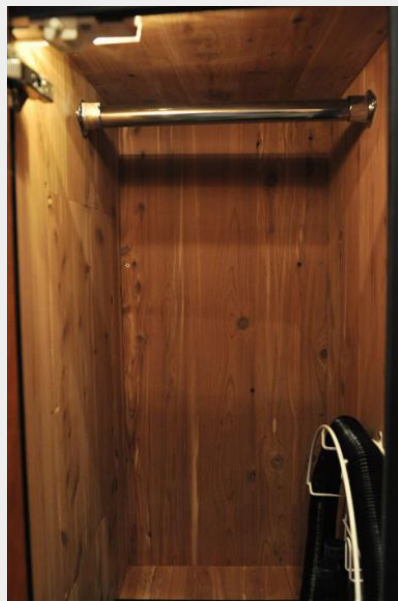
Stateroom Lighting



Stateroom Outlet



Master Stateroom Locker



Head



Head



Electronics



Electronics



Bridge Deck



Bridge Deck



Bridge Deck



Bridge Deck Seating



Second Time



Deck Storage



Deck Storage



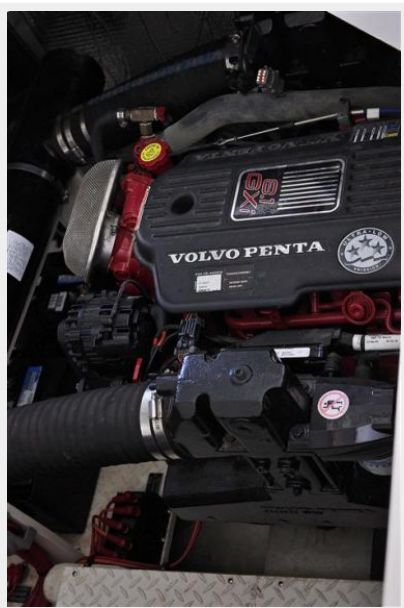
Aft View



Bow



Engines



Engines



Second Time



Engines



Second Time



Second Time



КОНТАКТЫ

Андрей Шестаков (Andrey Shestakov) – ведущий яхтенный брокер отдела продаж яхт и судов компании Shestakov Yacht Sales Inc. Официальный представитель Shestakov Yacht Sales Inc. для русскоговорящих клиентов в центральном офисе компании в Майами/Форт Лодердейл/Флорида/США.

Контактная информация

Email: andrey@shestakovyachtsales.com

Web: shestakovyachtsales.com

Телефоны

Краснодарский край: **+7(918)465-66-44**

США, Майами, Флорида: **+1(954)274-4435**

Время работы

Понедельник – Суббота: **9:00 - 21:00**
EDT

Воскресенье: **Закрито**

Адрес



Harbour Towne Marina, 850 NE 3rd St,
STE 213, Dania, FL 33004