

BELLA VITA — AZIMUT / BENETTI



Судостроитель: AZIMUT / BENETTI

Год постройки: 2011

Модель: Моторная яхта

Цена: ЦЕНА ЯХТЫ ПО ЗАПРОСУ

Местонахождение: United States

Длина общая: 95' 0" (28.96m)

Ширина: 22' 6" (6.86m)

Мин. осадка: 6' 1" (1.85m)

Макс. осадка: 6' 1" (1.85m)

Крейс. скорость: 23 Kts. (26 MPH)

Макс. скорость: 26 Kts. (30 MPH)

Купить **BELLA VITA — AZIMUT / BENETTI** а также выбрать подходящую вам яхту из нашего каталога яхт вам поможет опытный яхтенный брокер Андрей Шестаков. На сегодняшний день компания **Shestakov Yacht Sales Inc.** имеет большое количество яхт в собственном списке продаж, а также тесно сотрудничает со всеми крупными яхтенными производителями по всему миру.

Для того чтобы купить яхту **BELLA VITA — AZIMUT / BENETTI** а также проконсультироваться по любому вопросу связанному с покупкой, продажей, чартером яхт позвоните по телефону **+7(918)465-66-44**.

ОГЛАВЛЕНИЕ

ОГЛАВЛЕНИЕ	2
ХАРАКТЕРИСТИКИ	4
Основная информация	4
Размеры	4
Скорость, вместимость и масса	4
Размещение	4
Корпус и палуба	5
Информация о двигателе	5
ПОДРОБНОЕ ОПИСАНИЕ	6
General	6
External Layout	7
Internal Layout	7
Transom	7
Bow and Stern Thruster	8
Cockpit	8
Bow	8
Salon/Dining Area	8
Galley	9
Wheel House	9
Powder Room	10
Master Cabin	10
Aft Master Head	11
Bow Master Head	11
Portside Guest Cabin	12
Starboard Guest Cabin	12
Guest Heads	12
VIP Cabin	13
VIP Head	13

Alarm and Fuel Systems	14
Fly Bridge	14
Entertainment Systems	15
Navigational Systems	17
Communication Systems	18
Electrical System	18
Исключения	19
Отказ от ответственности	19
ФОТОГРАФИИ	20
КОНТАКТЫ	27
Контактная информация	27
Телефоны	27
Время работы	27
Адрес	27

ХАРАКТЕРИСТИКИ

Основная информация

Тип судна: Моторная яхта	Подкатегория: Flybridge
Модельный год: 2011	Год постройки: 2011
Страна: United States	Верх: Hardtop
Открытая палуба мостика: Да	Кубрик: Да

Размеры

Длина общая: 95' 0" (28.96m)	Ширина: 22' 6" (6.86m)
Мин. осадка: 6' 1" (1.85m)	Макс. осадка: 6' 1" (1.85m)
Трапы: 22' 6" (6.86m)	

Скорость, вместимость и масса

Крейс. скорость: 23 Kts. (26 MPH)	Макс. скорость: 26 Kts. (30 MPH)
Водоизмещение: 210000 Pounds	Чистый вес: 166 Pounds
Объем топливного бака: 3170 Gallons	

Размещение

Всего кают: 4	Всего коек: 6
Спальные места: 8	Всего ком. состава: 6
Каюта капитана: Да	Каюты экипажа: 1
Койки экипажа: 2	Спальных мест экипажа: 2
Комм. состав экипажа: 1	

Корпус и палуба

Материал корпуса: Other

Материал палубы: Teak

Комплектация корпуса: Other

Цвет корпуса: White

Отделка корпуса: Stainless Steel

Информация о двигателе

Двигатели: 2

Производитель: Caterpillar

Модель: C-32 ACERT

Тип двигателя: Inboard

Тип топлива: Diesel

ПОДРОБНОЕ ОПИСАНИЕ

General

- The Bella Vita has been provided the highest level classification and been approved by R.I.N.A. according to the “Rules for the Classification of Yachts”.
- Electrical System: 110V/60Hz Triple Phase
- (2) 220/110 V - 50 AMP shore power connections
- US Package and Gangway
- Wireless Yacht Controller: Remote Controls for main engines and thrusters
- Hydraulic Bow and Stern Thruster
- Upgraded ATOS intruders
- Ocean view camera and ACR searchlight
- SAE Converter with seamless transfer
- Idromar 180 l/h Watermaker
- Pair of spare propellers
- Deck fabric enclosures aft and side
- Increased soundproof insulation between the Engines room and the Master Cabin.
- Delta T Misting System on Aft Deck and Flybridge
- Kahlenberg Air Horn: T-2 model with signaling controller M-511-c (stainless steel)
- Deck Fuel Gauges
- Compressor with plugs on aft, next to the shore power inlet and in the Engines Room.
- Glendenning 100 AMP with 100' cable on aft
- Shore connection warning light
- (6) 50' dock lines
- HIN Plate
- User manuals in English
- VHF with US channels
- Garage Ventilation
- "Warning" Tags
- Fitted with Smoke and CO2 Detectors in all the cabins (crew included)
- Additional filter (UV Ray) on fresh water tank
- The main engines information is available on the Flybridge display
- Central Vacuum System
- Cameras on side decks, zoom and pivoting camera in Engine room and aft cockpit
- Monitor with alarms in the crew quarters
- TV and phone dock side connections US type
- Additional water heater
- Anti Vibration material added on the Bow Bulkhead and of the VIP Cabin and the on the Aft Bulkhead of the Engines Room.
- Stainless Steel anchors
- Vacuum Gauges on the Racor filters
- Fresh water spicket in Engines Room

- Additional water heater
- Scuppers and extraction fan in anchor locker.

External Layout

- Awlgrip painted Hull and Superstructure (furniture included) : WHITE
- Additional pairs of midship cleats (four in total each side)
- Hull side rub rail in rubber and stainless steel on the side cigars and around the swim platform.
- (4) Bulwark side gates
- Over sized davit
- Pop up cleats on the swim platform
- (2) U shaped removable handrails on the swim platform
- No. 8 OCEAN LED underwater lights: two on the aft under the swim platform, two on each side on aft and one each side under the Master Cabin windows
- Two bases for umbrellas on the swim platform
- Marquipt ladder with swiveled platform and brackets on each side
- Stainless steel rub rail on the swim platform and the side cigars
- All locker doors installed with gas pistons
- Stainless steel strips added on the outboardside of the Bow fairleads, to protect the gel coat from friction with mooring lines.

Internal Layout

- (3) Safes in total, Master Cabin, VIP Cabin and Captain's Cabin
- All mirrors have been custom beveled
- Roman Shades fitted throughout
- Blackout rolls for all cabins
- Soundproof padding on all floors
- Drawers fitted with breaking system when closed
- Additional soundproof insulation/padding of all floors (all carpeted areas)

Transom

- Backlit name on Transom
- Hydraulic lifting swim platform with a max capacity of 1.100 kg. Teak floor and grating
- Structural staircases with teak steps on both sides of the transom to access the swim platform. Stainless steel handrail on the external side of each staircase. Electro-hydraulic retractable gangway in stainless steel and teak on transom, Starboard side.
- Water shore connection, shower, fresh water outlet on transom, Portside. Shore power inlets, TV and telephone inlets placed on transom, Starboard side Black water shore

discharge system on starboard side.

- Watertight door to access lower deck/crew quarters placed in the middle of the transom.

Bow and Stern Thruster

- Hydraulic System
- Power at the propeller: 35kW (33,5 Hp)

Cockpit

- Custom High/Low Aft Deck table with central removable extension
- C-shaped fiberglass settee for 6 people, with cushions
- 3 Custom wicker chairs
- Salon door in tempered glass and stainless steel divided into four sections.
- Stainless steel handrail on both sides of the settee.
- Control panel for the gangway and the swim platform, placed in the handrail on Starboard side of the settee
- Stainless steel handrails for the staircase to the Flybridge
- Two stainless steel pillars to sustain the Flybridge structure
- Two stainless steel gates to access the swim platform
- Fresh water inlets on port and starboard side
- Watertight halogen lights on the ceiling
- Covers for the settee and the table Drainage holes.

Bow

- Binimi top above bow seating area
- Chain storage with drainage
- Chain washer through the fire extinguisher hose
- Sunbathing cushions area with railings on the superstructure
- C-shaped sofa integrated in the superstructure, with cushions and backrest
- Watertight halogen lights recessed in the fiberglass placed in the sofa area and in the bow mooring area
- Two teak coffees table with stainless steel high/low base, teal filler to make one large table
- Two electric wipers for forward windows
- Black mesh for the front wheelhouse windscreen
- Emergency escape hatch from the VIP cabin
- Covers for the teak tables, sofa and sunbathing cushions

Salon/Dining Area

- Custom Salon layout with 50" Retractable TV (See entertainment section)
- Custom L shaped sofa
- (2) Lift top ottomans
- One glass coffee table with storage for two ottomans
- Furniture between salon and dining area, for storage of dishware, glassware and cutlery
- Dishware, glassware and cutlery set for 10 people
- Glass dining table with eight dining chairs
- Storage cabinet on starboard side in the dining area
- Custom bar unit with marble top and floating top in wood, equipped with: sink in stainless steel, Isotherm 49 lt fridge and Isotherm 4kg/h icemaker
- Storage cabinet on port side next to the bar
- Sliding door to access the custom galley
- Separate door dividing the dining area and the wheelhouse
- Direct (halogen spotlights) and indirect (neon) lights on ceilings
- Custom carpet flooring
- Floor behind the bar cabinet in marble
- Wine Chiller hidden in dining area

Galley

- Custom Gallery arrangement to utilize counter space and storage
- Trash disposal in the sink
- Instant hot water by the sink
- Faucet by cooktop
- Trash compactor in the galley
- Side access door on the starboard side on the superstructure
- Slide access door from the dining area
- Two sliding panels
- 60Hz appliances
- Equipment of the galley includes: electric five burner Miele counter top with pot holder sink (Barazza) hood for the cooking top (Miele) conventional oven (Miele) microwave oven (Miele)
- Fridge and freezer equipped with ice maker, stainless steel finishing (Subzero)
- Spotlights on the ceiling.
- Flooring in wood

Wheel House

Wheel House console equipped with:

- Custom Chart table with storage inside
- Storage cabinet on portside

- Custom console panel in Wheel House with back mounted instruments
- Sliding door under console with sliding printer shelf
- Wheel upholstered in leather
- Main engines controls
- Main engines and inverters gauges
- Bow and stern thruster control
- Navigation electronics
- Intercom controls

15” touchscreen to control and monitor the following systems:

- Generators
- 220V power system
- 24V power system
- Navigation
- Lights, navigation lights, searchlight, horn, wipers
- Indicator/alarms of: fuel tanks level, water tank level, grey and black water tanks. Bilges
- Batteries
- Fire alarm system
- Central staircase to lower deck
- Sofa C shaped on portside with storage underneath and flag rack on the side
- Cherrywood table
- Two single pilot seats
- Electrical panel placed on aft of the helm seats
- Carpet flooring

Powder Room

- TECMA Toilet
- Sink
- Mirror, shelves and cabinet under the sink
- Lights on ceiling above the sink
- Washing basin top and backsplash in marble
- Wooden flooring with central marbles inlay
- Venetian blinds

Master Cabin

- Custom His & Hers Head arrangement
- Custom coffee table with hidden fridge inside, on portside
- Private access with separate staircase from the salon
- Lower deck lobby with storage area and additional washer and dryer
- King size bed with storage underneath

- Two nightstands with two drawers each
- Two reading lamps
- Indirect (neon) lights on ceiling
- Direct lights (halogen spotlights) on the ceiling
- Rope lights behind the panels beside the beds
- Two wide panoramic windows, one each side
- Opening porthole on portside and on starboard
- Custom dresser on starboard side window
- Walk in closet on portside
- Drawers columns on starboard and port sides
- TV on aft bulkhead
- Safe box.
- Carpet flooring

Aft Master Head

- Tecma Toilet
- Sink
- Mirror, shelves and cabinet under the sink
- Lights (halogen spotlights) on ceilings and above the sink
- Lamps on the sides of the mirror
- Watertight light inside the shower
- Custom glass tiled shower with column and central rain shower on ceiling, teak grating, teak bench and glass door
- Shower column, mirror trim, washing basin top and backsplash in marble
- Storage cabinet on hullside
- Marble flooring with wooden perimeter
- Opening porthole
- Venetian blinds

Bow Master Head

- Tecma Toilet
- Sink
- Mirror, shelves and cabinet under the sink
- Lights (halogen spotlights) on ceilings and above the sink
- Lamps on the sides of the mirror
- Watertight light inside the shower
- Custom glass tiled shower with column and central rain shower on ceiling, teak grating, teak bench and glass door
- Shower column, mirror trim, washing basin top and backsplash in marble
- Storage cabinet on Hull side

- Marble flooring with wooden perimeter
- Opening porthole
- Venetian blinds

Portside Guest Cabin

- Access from the lower deck corridor, through the staircase from the wheelhouse
- All TV's are recessed in the bulkheads in all cabins
- Two single beds with storage underneath, with mattresses, pillow and bedspreads
- Nightstand in the middle with four drawers
- One lamp
- Indirect light (neon) on the ceiling
- Direct light (halogen spotlights) on the ceiling
- Rope light behind the panel of the headboard above the nightstand
- Wardrobe with hanging bar and drawer
- Opening porthole
- Curtains and upholstery
- Custom carpet flooring

Starboard Guest Cabin

- Access from the lower deck corridor, through the staircase from the wheelhouse
- All TV's are recessed in the bulkheads in all cabins
- Queen Bed
- Nightstand with storage
- In -suite Head
- One lamp
- Indirect light (neon) on the ceiling
- Direct light (halogen spotlights) on the ceiling
- Rope light behind the panel of the headboard above the nightstand
- Wardrobe with hanging bar and drawer
- Opening porthole
- Curtains and upholstery
- Custom carpet flooring

Guest Heads

- Tecma Toilet
- Sink
- Mirror, shelves and cabinet under the sink
- Cabinet with drawers on hullside

- Lights (halogen spotlights) on the ceilings and above the sink
- Watertight light inside the shower
- Lamps on the sides of the mirror
- Shower with column and central rain shower on ceiling, wooden grating and glass door
- Shower column, mirror trim, washing basin top and backsplash in marble
- Marble flooring with wooden perimeter
- Opening porthole
- Venetian blind

VIP Cabin

- Tecma Toilet
- Sink
- Mirror, shelves and cabinet under the sink
- Lights (halogen spotlights) on the ceilings and above the sink
- Watertight light inside the shower
- Lamps on the sides of the mirror
- Shower with column and central rain shower on ceiling, teak grating and glass door
- Shower column, mirror trim, washing basin top and backsplash in marble
- Marble flooring with wooden perimeter
- Opening porthole
- Venetian blind
- Lower Deck Crew Quarters
- Access from the hatch on transom or from the side access door on the superstructure on aft Portside.

VIP Head

- Tecma Toilet
- Sink
- Mirror, shelves and cabinet under the sink
- Lights (halogen spotlights) on the ceilings and above the sink
- Watertight light inside the shower
- Lamps on the sides of the mirror
- Shower with column and central rain shower on ceiling, teak grating and glass door
- Shower column, mirror trim, washing basin top and backsplash in marble
- Marble flooring with wooden perimeter
- Opening porthole
- Venetian blind
- Lower Deck Crew Quarters
- Access from the hatch on transom or from the side access door on the superstructure on aft Portside.

Alarm and Fuel Systems

FIRE ALARM AND SAFETY SYSTEM

- Portable extinguishers in all the areas of the yacht
- FM200 fire extinguisher system for the main engines: Manual control station, placed on aft portside of superstructure
- Cabinet placed under the staircase to the crew quarters with the following items: one 108 Kg bottle FM200 one CO2 pilot bottle for:
 - FM200 activation
 - CO2 fire extinguishing system for engine room.
 - Shut off of the ventilation and extraction ducts in engines room
 - Shut off of the fuel valve at the day tanks
 - Connection to the electrical system for the switching off of the air intakes and extractor of the engines room and the electrical pump for fuel transfer
 - N.2 nozzles placed on the engines room ceiling
 - Two fire extinguisher hoses placed as follows: one on aft, under the staircase to the upper deck, one on bow, next to the anchor winch.
- Fire extinguisher system: smoke detectors are placed in the following areas: Engine room area (2), Dinette crew area, Corridor lower deck, Master cabin, Galley, Saloon/dining area, Wheelhouse
- Technical area under the wheelhouse

FUEL SYSTEM

- One day tank placed on the bow bulkhead in engine room and one structural tank positioned midship.
- Total capacity: 12,000 lt.(3,170 gals.)
- Each tank is provided with breather pipe and electric sensor for level monitoring.
- Fuel levels and their alarms are visible in wheelhouse and on the main electrical panel
- Fuel filling operation is carry out by filling both tanks
- Reversible 220 V AC electro-pump, automatic and manual, with a capacity of 65 l/min (37 gals/h), to transfer fuel
- Duplex RACOR filters on engines type 75/1000 MA
- Single RACOR filter on generators type 500 MA
- AISI 304 or rubber flameproof piping

Fly Bridge

- Custom Flybridge arrangement
- Marquipt swivel platform and extension with custom Flybridge cradle
- Crane on Flybridge, placed on aft bow direction, with upgraded capacity
- Hard top with electric retractable opening
- Second radar arch

- Pair of spotlights recessed in the fiberglass on aft Flybridge
- (4) Swiveling stools at custom shaped bar
- Teak floor on Flybridge
- (2) Subzero fridge drawers
- Custom Barbecue in central position with storage underneath for gas tank and BBQ Kit) and storage lockers on both sides.
- Barbecue with Stainless steel cover with internal light over the grill and both counter tops on the sides. Barbecue cover to be, when closed, inline with the side counter tops.
- Glendinning hose for fresh water installed in the barbecue cabinet.
- Portable outdoor TV with ports on Flybridge and Aft Deck
- Electric curtain to cover the aft area, from roll bar to crane
- Wash down connection on Flybridge through sink plumbing.
- Additional hardtop controls on the Flybridge console
- (2) US Specified life rafts seating six each

Entertainment Systems

- **CREW LOUNGE** Samsung 22" LCD TV ,TV bracket yard supply Direct TV H21 HDTV Receiver DirecTV includes XM Radio channels SoundStream Car Stereo DVD/CD MP3 Player Xantech XIS100 iPod Docking station w/ On-screen Navigation Sonance CR101 Round 165mm 40W Speaker PAIR Philips Prestigo Universal IR Remote Control Xantech IR Remote Control A/V Switcher w/power supply Alfatronix 110/220VAC to 12VDC 6A Transformer
- **CAPTAIN'S CABIN** SoundStream Car Stereo DVD/CD MP3 Player SoundStream 7" Wide Headrest module Monitor Sonance CR101 Round 165mm 40W Speaker PAIR Alfatronix 110/220VAC to 12VDC 6A Transformer
- **CREW CABIN** Pioneer Car Stereo CD AM/FM/Tuner w/iPod control 5-1/4" 2-Way Kevlar Speaker PAIR Alfatronix 110/220VAC to 12VDC 6A Transformer
- **GUEST CABINS (2)** 2 Samsung 22" LCD TV TV bracket yard supply 2 Direct TV H21 HDTV Receiver DirecTV includes XM Radio channels 2 Yamaha DRX-730BL Micro Component DVD/CD System HDMI - Black US 2 Yamaha YDS-11SL iPod Dock - Silver 2 HiFiWorks 65W In-ceiling Speaker PAIR 2 300 Kaleidescape 1080p Mini Movie/Music Player 2 Philips Pronto TSU-9300 Universal Remote - US Version
- Includes: Docking station and power Supply 2 Philips WiFi Pronto Wireless extender - US Version 2 Xantech IR Remote Control A/V Switcher w/power supply
- **VIP CABIN** Samsung 22" LCD TV TV bracket yard supply Direct TV H21 HDTV Receiver DirecTV includes XM Radio channels Electronics Viso Two AV Receiver stereo DVD System w/HDMI Sonance Thin-line TL621R 165mm 100W Speaker PAIR Kaleidescape 1080p Mini Movie/Music Player Xantech XIS100 iPod Docking station w/ On-screen Navigation Philips Pronto TSU-9300 Universal Remote - US Version Includes: Docking station and power Supply Philips Advanced Serial Extender - US Version Extron MLS 103V RS-232 Remote AV Switcher
- **OWNER'S STATEROOM** Video feed from Navigation system on TV and CCTV Panasonic

- 42" Full HD Plasma Display Panasonic Dual Composite Video Terminal board for Plasma Displays Panasonic Dual HDMI Card for Plasma Displays Direct TV H21 HDTV Receiver DirecTV includes XM Radio channels Electronics Viso Five AV Receiver DVD System 5.1 w/HDMI Sonance Symphony S622TR 165mm 125W Individual Speaker Velodyne Impact-Mini 300W self-powered Subwoofer - Black Kaleidescape 1080p Mini Movie/Music Player Xantech XIS100 iPod Docking station w/ On-screen Navigation Philips Pronto TSU-9600 Universal Remote - US Version Includes: Docking station and Power Supply Philips Advanced Serial Extender - US Version Extron MLS 103V RS-232 Remote AV Switcher
- **MAIN SALON** Video feed from Navigation system on TV Panasonic 50" Full HD Plasma Display, Panasonic Dual Composite Video Terminal board for Plasma Displays Panasonic Dual HDMI Card for Plasma Displays Electronics T765 7.1 7x80W 4 zone A/V Receiver - US model AV connection for Wii game console Direct TV H21 HDTV Receiver XM Mini Tuner w/Home Dock XM Radio via NAD T765 AV Receiver Samsung Blu-Ray BD-P1600 Disc Player - US Version Gefen EXT-HDMI-CAT5X Extender Xantech XIS100 iPod Docking station w/ On-screen Navigation Kaleidescape Mini System 120 - Includes: 1 Movie & 2 Music Zones 2 Kaleidescape 500GB Mini Disk Cartridge - New System Sale Base Mini System holds up to 75 DVDs or 825 CDs Upgradeable storage up to 225 DVD's or 2500 CD's. 5 Sonance Symphony S623TR 165mm 135W Individual Speaker Velodyne Microvee 1000W Compact Subwoofer - Black Crestron 5.7" Wireless RF remote Touchpanel Includes: TPS-6X-BTP Battery pack, TPS-6X-DS Desk Docking Station, TPS-6X-IMCW Interface Module Crestron Compact Control system w/ethernet Crestron High powered RF Gateway - Int. version NAD Electronics 12 Channel Power Amplifier - US model
 - **DINING AREA** NAD T765 ZONE 2 Amplified Sonance CR101 Round 165mm 40W Speaker PAIR Niles VCS100R Black Volume Control
 - **WHEELHOUSE** SoundStream Audio Video Source Unit w/7" flip-up Touch screen SoundStream iPod cable connection for STVIR models Sonance CR101 Round 165mm 40W Speaker PAIR Alfatronix 110/220VAC to 12VDC 6A Transformer
 - **AFT DECK** NAD T765 ZONE 3 Amplified AV sources from Salon. Control via Salon remote. Terra CA.65.2R round 125W waterproof Speaker PAIR Niles WVC100 White weatherproof stereo Volume Control SunBrite TV 23" waterproof LCD TV
 - **FLY BRIDGE** NAD T765 ZONE 4 preamplified Slave TV signal Salon into Fly monitor(s) Fusion MS-IP500 iPod Marine Stereo Unit - Grey (7780000001) Sirius SCC1 Connect vehicle Tuner 3 Fusion 6" Marine 2-Way Speaker PAIR (7782000022) 10" Waterproof 400W Subwoofer Fusion 2-channel amplifier for FWM-10 subwoofer Niles WVC100 White weatherproof stereo Volume Control Alfatronix 110/220VAC to 12VDC 9A Transformer
 - **BOW SUNPAD** Sound slaved from FLY BRIDGE Fusion 6" Marine 2-Way Speaker PAIR (7782000022) Niles WVC100 White weatherproof stereo Volume Control **SATELLITE TV SYSTEM** TracVision M7 HD US Satellite TV Spaun SAT TV 8 output Multiswitch
 - **MISCELLANEOUS**Shakespeare 4' Galaxy AM/FM Antenna Shakespeare 4" High 1"-14 Thread SS mount TV & FM Distribution System Sirius SIRMarine dual mount marine Radio Antenna Gefen VGA-CAT5 1:4 Splitter 2 Gefen VGA to CAT5 Extender Kit Includes: VGA Extender SRN Sender Unit, VGA Extender SRN Receiver Unit & 6' VGA cable NOTE: For Navigation system video distribution in Owner's Stateroom & Main Salon

Navigational Systems

- **RADAR / CHARTPLOTTER 3D SYSTEM** Furuno NavNet 3D Black Box Multi Function Display Includes: Black box Processor Black box Control unit Pre-loaded w/NOAA raster charts for US LOCATION: WHEEHOUSE
- Furuno NavNet 3D Black box Control unit LOCATION: FLYBRIDGE Furuno NavNet 3D Open Array Radar Sensor - 24VDC Includes: NavNet 3D Gearbox Radar Sensor cable for NavNet 3D Furuno XN12A 4' Open Array Antenna
- Furuno NavNet 3D 6' Open Array Radar Sensor - 24VDC Includes: 25kW NavNet 3D Gearbox 6' Antenna Radiator Assembly Power Supply Unit Furuno XN13A 6' Open Array Antenna 2 KEP Marine 19" Pilothouse Marine Display 2 KEP Marine Rear Mount addition LOCATION: WHEELHOUSE
- 2 KEP-KEPM-15 KEP Marine 15" Sunlight readable Monitor LOCATION: FLY BRIDGE Furuno Black Box WAAS/GPS Receiver Shakespeare 4" High 1"-14 Thread SS mount
- Furuno Interswitch Hub for NavNet 3D
- GEF-EXT-DVI-CAT5X Gefen DVI CAT-5 Extreme
- Furuno FA-50 Class B AIS Transponder - 24VDC Includes: Transponder Unit Antenna GPA-017S Viewer FAISPC-MX Comrod 6dB 8' VHF Antenna 1" Deck-mounting flange Antenna Mount Shakespeare 4" High 1"-14 Thread SS mount Furuno Digital Black Box echosounder module for NavNet Airmar 600W 50/200kHz bronze Triducer - Speed/Depth/Temp Furuno FI503 Digital Data Display LOCATIONS: WHEELHOUSE, FLY, CAPTAIN'S CABIN
- Furuno NMEA Interface Kit
- Furuno NMEA 2000 Cable - 20m
- Furuno Bronze Thru-Hull Depth, Speed & Temp Sensor - NMEA2000 Rate Compensated Heading Sensor
- Furuno SC50 GPS Satellite Compass - 24VDC Includes: SC502 4.5" LCD Display, SC501 Processor unit, SC303 25.6" Antenna unit, 15m Cable assembly
- Furuno Ultrasonic Weather Station w/GPS Sensor Alfatronix 24VDC to 12VDC PowerVerter 6A
- Furuno Sirius Satellite weather Receiver w/Antenna Includes: Receiver, power cable & SR40 Antenna NOTE: SIRIUS WEATHER SUBSCRIPTION NOT INCLUDED
- **LOUDHAILER** Furuno LH3000 30W Loudhailer w/4.5W intercom - 12VDC 2 Newmar 60W waterproof Deck horn 1 Alfatronix 24VDC to 12VDC PowerVerter 6A
- **EPIRB** Sailor SGE406-II Satellite EPIRB w/GPS & aut. release bracket
- **AUTOPILOT** Simrad AP50 Autopilot Includes: Display w/15m Robnet cable Rudder Feedback w/10m cable Compass w/15m cable J50 Junction Box LOCATION: WHEELHOUSE
- Simrad AP50 Control Unit Display w/15m Robnet cable LOCATION: FLY BRIDGE
- Simrad IS20 Rudder Display LOCATION: WHEELHOUSE + FLY BRIDGE
- Simrad TI51 Thruster Interface - part#: 22089189
- Simrad AT 10 Universal Simnet / Nmea Converter Simrad Installation Cable Kit **VHF 2** Icom M604 US VHF Marine Transceiver - Black Includes: Hand microphone & Mounting bracket Kit LOCATIONS: WHEELHOUSE + FLY

- 2 Comrod 6dB 8' VHF Antenna 2 Procom 1" Deck-mounting flange Antenna Mount Alfatronix 24VDC to 12VDC PowerVerter 6A TY NAV-COM CABLE & HARDWARE Package
- USCG approved navigation lights

Communication Systems

- **TELEPHONE SYSTEM** Sailor 150 Fleet Broadband Includes: 150 Antenna Unit Fleetbroadband below deck Unit IP handset/cradle 10m Antenna cable
- **CCTV SYSTEM** NOTE: CCTV camera system Yard Supply OceanView APOLLO II HD Thermal & Low light Camera LOCATION: MAST OceanView Additional Control Unit for Apollo II + HD LOCATION: FLY BRIDGE
- **STANDARD NET-COMMS PACKAGE**
- **TELEPHONE SYSTEMS CELLULAR TELEPHONE:** Burnside T940 Quadband GPRS fixed Cellular Terminal Burnside FCT Wall mounting bracket Comrod UHF/GSM Multiband cellular 2dB Antenna Procom 1" Deck-mounting flange Antenna Mount
- **PBX TELEPHONE SYSTEM:** Panasonic KX-TDA50 Hybrid IP PBX Telephone System Panasonic KX-TDA5171 4-Port Digital Line Card Panasonic KX-TDA5180 4 Port CO Card Panasonic KX-T7633 24Btn Digital LCD Speakerphone - Black 5 Panasonic KX-DT321 8 Btn Digital LCD Speakerphone - Black Panasonic KX-T0151 2-Channel Cell Station Panasonic KX-TD7690 2.4GHz Multi-Cell wireless Phone LOCATION: MAIN SALON
- **NETWORK SYSTEM** VSAT: Prewire for KVH V7 VSAT antenna only.
- KVH TracVision M7 empty Dome
- **MARINA/PORT WIFI:** Inventica Yachtpot Marine WiFi System Comrod UHF Maritime WiFi 8dBi 1.20m Antenna Procom 1" Deck-mounting flange Antenna Mount
- **3G/UMTS:** Option GlobeSurfer III 3G Cellphone Router Comrod UHF/GSM Multiband cellular 2dB Antenna Procom 1" Deck-mounting flange Antenna Mount
- **NETWORK LAN:** 3 COM 2924 Baseline 24 port Switch - PWR Plus 4 3COM Wireless 7760 11a/b/g PoE Access Point LOCATION: GUEST & CREW AREA, FLYBRIDGE, MAIN SALON
- Livewire Connections Access Controller FB-10 PRO System Includes: 1 - Access Controller FB-10 PRO 1 - Set Mounting Brackets 1 - Quick start guide + Support CD w/manual 1 - INTERFACES: 7xLAN Ports, 1xSerial Ports, 2x USB Ports, 1xISDN Port, 1xVessel LAN Port
- **MISCELLANEOUS:** APC RT 1500VA 120V Smart UPS TY Rack Allowance TY Network CABLE & HARDWARE Package

Electrical System

- Gel Batteries
- 2 x 100A inlets + TV and phone inlets in the storage locker on Bow
- All courtesy lights are LED

- The whole system has been carried out according to the I.E.C. and C.E.I. rules.
- The voltages on board are the following: - 220 V a.c. triphase, 60 Hz, for power circuits - 220 V a.c. single phase
- 60 Hz, for: - lights in the engines room, - neon lights, - electrical outlets;
- 24 V c.c. with grounded negative for: - engines starter - emergency circuits, - spotlights, headboards and courtesy lights, - little users - navigation lights - electronics.
- 12 V c.c. with grounded negative for: - generators starter
- Electrical wiring is housed in metal or self-extinguishing closed PVC conduits.
- Electrical wiring is constructed with no flammable materials and with proper cross section related to the use.
- Additional empty conduits (40 mm of diameter) in the following areas: - One conduit from the roll bar (starboard side) to the technical area under the wheelhouse console - One conduit from roll bar (portside) to the technical area under the wheelhouse console - One conduit from the technical area under the wheelhouse console to the bilge - One conduit from the technical area under the wheelhouse console to the ceiling of the engines room - One conduit from the ceiling of the engines room to the crew quarters ceiling
- Principal electrical control panels are installed in: - engine room - wheelhouse
- Secondary electrical panels are installed in all areas of the yacht.
- All equipment have ground junctions with adequate cords and braiding of copper with proper cross section.
- The ground system is the following: - ground system for machinery, sea water intakes, etc.; - ground system for electrical circuits, which joins all control panel grounds and electrical equipment grounds.
- The ground system is made up by two copper straps all along the length of the yacht, connected to: - aft zincs - independent porous plates.
- Dimmed lights for all internal ceiling lights (galley and heads excluded)
- (2) 60Hz Generators
- GFCI for outlets placed externally, in the technical areas, in the heads and in the galley.

Исключения

При продаже яхты исключаются личные вещи владельца.

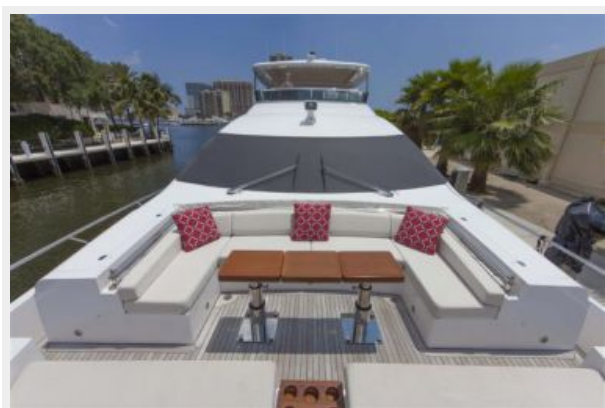
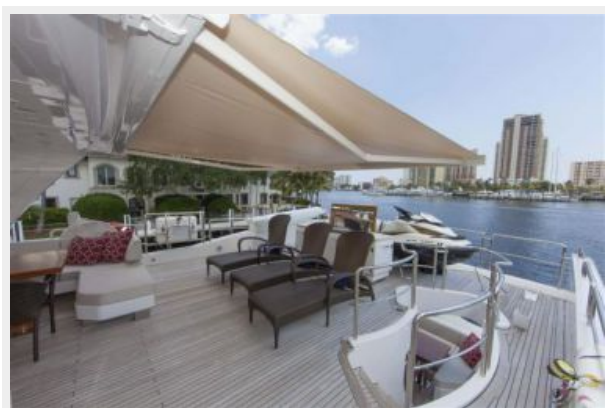
Отказ от ответственности

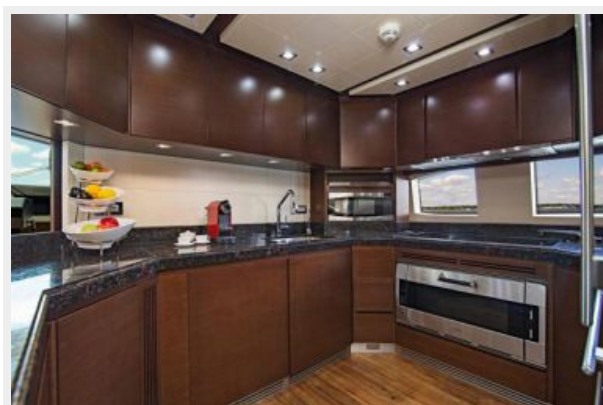
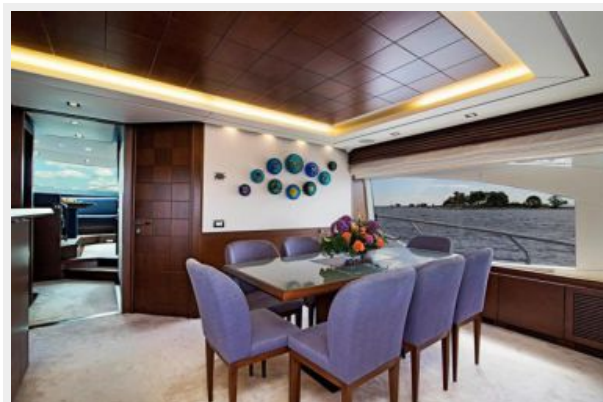
Компания предоставляет описание судна или яхты добросовестно, но не может гарантировать точность этой информации, а также не ручается за техническое состояние. Покупатель должен проинструктировать своих агентов или оценщиков исследовать представленную информацию более подробно, по собственному желанию. Продажа судна или яхты, изменение цены или снятие с продажи будет происходить без предварительного уведомления.

ФОТОГРАФИИ

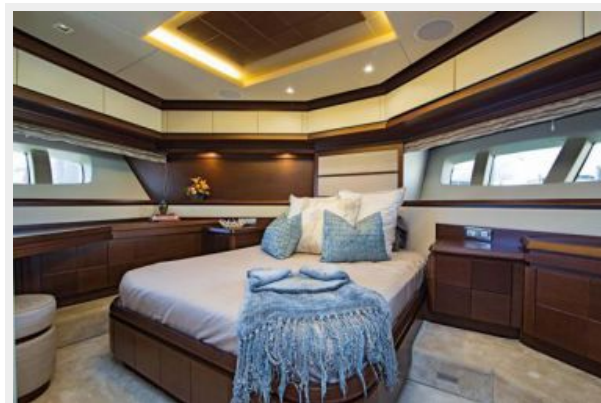














КОНТАКТЫ

Андрей Шестаков (Andrey Shestakov) – ведущий яхтенный брокер отдела продаж яхт и судов компании Shestakov Yacht Sales Inc. Официальный представитель Shestakov Yacht Sales Inc. для русскоговорящих клиентов в центральном офисе компании в Майами/Форт Лодердейл/Флорида/США.

Контактная информация

Email: andrey@shestakovyachtsales.com

Web: shestakovyachtsales.com

Телефоны

Краснодарский край: **+7(918)465-66-44**

США, Майами, Флорида: **+1(954)274-4435**

Время работы

Понедельник – Суббота: **9:00 - 21:00**
EDT

Воскресенье: **Закрито**

Адрес



Harbour Towne Marina, 850 NE 3rd St,
STE 213, Dania, FL 33004