

MIMOSA — TIARA



Builder: TIARA

Year Built: 2014

Model: Sport Fisherman

Price: PRICE ON APPLICATION

Location: Mexico

LOA: 48' 5" (14.76m)

Beam: 15' 11" (4.85m)

Min Draft: 3' 11" (1.19m)

Max Draft: 4' 1" (1.24m)

Cruise Speed: 30 Kts. (35 MPH)

Max Speed: 36 Kts. (41 MPH)

Our experienced yacht broker, Andrey Shestakov, will help you choose and buy a yacht that best suits your needs **MIMOSA — TIARA** from our catalogue. Presently, at Shestakov Yacht Sales Inc., we have a wide variety of yachts available on our sale's list. We also work in close contact with all the big yacht manufacturers from all over the world.

If you would like to buy a yacht **MIMOSA — TIARA** or would like help answering any questions concerning purchasing, selling or chartering a yacht, please call **+1(954)274-4435**

TABLE OF CONTENTS

TABLE OF CONTENTS	2
SPECIFICATIONS	6
Basic Information	6
Dimensions	6
Speed, Capacities and Weight	6
Accommodations	6
Hull and Deck Information	7
Engine Information	7
DETAILED INFORMATION	8
Walkthrough	8
Salon	8
Galley	9
Companionway	9
Guest Cabin	9
Master Cabin	9
Master Head	10
Forward Cabin	10
Guest Head	11
Foredeck	11
Mezzanine Area	11
Cockpit	11
Flybridge	12
Tower	13
Engine Room	13
Electrical	13
Remarks	14
Exclusions	14
Exclusions	14

Disclaimer	14
PHOTOS	15
Salon to Port	15
Salon Looking Aft	15
Salon to Starboard	15
Salon 40" LED TV	15
Salon Wine Cooler	16
Salon Electrical Locker	16
Salon Table	16
Dining Table	16
Galley Looking Forward	16
Galley Looking Aft	16
Companionway	17
Microwave	17
Storage Below Steps	17
Companionway Storage	17
Starboard Cabin Looking Aft	18
Starboard Cabin Looking Forward	18
Master Looking Aft	18
Master Cabin	18
Master Looking to Port	19
Storage Below Master Sole	19
Master Looking Forward	19
Master Head/Shower	19
Master Head	20
Forward Cabin	20
Forward Cabin	20
Forward Cabin TV	20
Forward Head	21

Forward Shower	21
Bow Sun Pad	21
Bow Sun Pad	21
Bow Looking Aft	22
Pulpit/Windlass	22
Walk Around Side Decks	22
Transom	22
Mezzannine Seating	22
Raised Mezzannine	22
Custom Table	23
Custom Cockpit Table	23
Easy Access Flybridge	23
Fold Down Transom Seat	23
Flybridge Steps	24
Helm	24
Helm Portside	24
Helm	24
Helm Starboard Side	25
Helm Chairs	25
Flybridge Table	25
Flybridge Seating	25
Flybridge Portside	25
Flybridge Starboard Side Drink Cooler	25
Flybridge Under Helm AC & Refrigeration	26
Tower Helm	26
Tower FRP Buggy Top	26
Tower Seating	26
Custom Instrument Pod	26
12 KW 6' HD Radar	26

Starboard Engine	27
Engine Room Forward	27
Port Engine	27
Fuel Filters	27
Custom Engine Room Toilet	27
Water Maker	27
Battery Charger	28
Water Maker/Refrigeration	28
Generator	28
5 KW Generator	28
Blue LED Lighting	29
Engine Room Panel	29
Maiden Voyage	29
Old Tiara Tower Removed	29
Bow View	30
Alternate Profile	30
Tower	30
Tiara	30
Layout	31
CONTACTS	32
Contact details	32
Telephones	32
Office hours	32
Address	32

SPECIFICATIONS

Basic Information

Category: Sport Fisherman	Sub Category: Convertible
Model Year: 2014	Year Built: 2014
Country: Mexico	Vessel Top: Marlin Tower
Fly Bridge: Yes	Cockpit: Yes

Dimensions

LOA: 48' 5" (14.76m)	Beam: 15' 11" (4.85m)
Min Draft: 3' 11" (1.19m)	Max Draft: 4' 1" (1.24m)

Speed, Capacities and Weight

Cruise Speed: 30 Kts. (35 MPH)	Cruise Speed Range: 300
Max Speed: 36 Kts. (41 MPH)	Displacement: 46000 Pounds
Gross Tonnage: 23 Pounds	Water Capacity: 150 Gallons
Holding Tank: 50 Gallons	Fuel Capacity: 1000 Gallons

Accommodations

Total Cabins: 3	Sleeps: 6
Total Heads: 2	

Hull and Deck Information

Hull Material: Fiberglass

Deck Material: Fiberglass

Hull Configuration: Deep Vee

Hull Designer: Tiara Yachts

Exterior Designer: Tiara Yachts

Interior Designer: Tiara Yachts

Engine Information

Engines: 2

Manufacturer: Caterpillar

Model: C-18 Acert

Engine Type: Inboard

Fuel Type: Diesel

DETAILED INFORMATION

Walkthrough

Entering via the sliding door slightly to starboard is the Salon with the optional teak and holly sole, L shaped sofa to port, popup TV to starboard with a four person dinette forward. To port is the well equipped open Galley with custom storage.

Down four steps slightly to starboard is the accommodation area with an over/under bunk room to starboard followed by a large locker. To port is the Master Cabin with a double walk around berth, ample storage and a private Head with a stall shower behind a pocket door.

Next forward to port is the Forward Cabin with an oversize double berth below and a single bunk above. To starboard is a dual access Guest Head with stall shower.

The Flybridge is easily accessed via optional teak tread steps. The area is fully enclosed, air conditioned and has seating for a crowd!

Salon

Surprisingly roomy for a 48' Convertible the Salon of MIMOSA is finished in semi gloss teak joinery with a teak and holly sole that contrasts nicely. Immediately to port is an eggshell Ultra Leather covered L shaped settee with storage below.

To starboard immediately upon entry is a cabinet containing a nine bottle clear door Danby wine cooler. Next forward are two teak doors covering the yacht's main AC DC electrical panel. Further outboard is a Samsung 40" popup TV.

Next forward is an upholstered dining settee upholstered to match the Salon settee also with storage below.

A fixed height (but removable) dining table finished in hi gloss teak lies in front of the settee.

Next forward are two cabinets housing the yacht's entertainment electronics, including: a Bose Lifestyle Home Theater AM/FM/CD player, a Samsung Blue Ray player, a Sat TV receiver and an Apple TV/air port. There is also open storage below.

The large side and aft windows are covered with Ocean Air cell type shades. Cool air is delivered through valance type port and starboard ducting. Overhead are eleven low heat LED light fixtures, port and starboard are three sconce fixtures.

Speakers are hidden as well as is the subwoofer. Ample AC outlets plus smoke and CO detectors complete the Salon's equipment list.

Galley

The Galley is open to the Salon and on the portside in a U shape. Features include:

Teak & holly sole Quartz counters (2) Sub Zero refrigerator drawers w/sea locks (2) Sub Zero freezers drawers w/sea locks one w/icemaker Under mount stainless steel sink Removable spray faucet Garbage disposal Kenyon 3 burner ceramic cook top w/sea rails Sharp Grill/2 convection/microwave oven behind hinged panel (4) Teak cabinets above counter mast w/pullout Storage racks (4) Teak drawers (3) Teak cabinets below countertop Hinged door for concealed trashcan Custom bar storage port & starboard (6) Under counter LED lights (9) Overhead Galley LED lights Stainless steel rail on countertop between Galley & Salon

Companionway

Four teak steps each w/a step light lead below to the accommodations.

The steps hinge up for storage w/pullout shelf and access to the yacht's plumbing connections. The central vac and hose are housed in this area.

The bulkheads of the Companionway have an attractive wainscoating with teak below and off white vinyl above.

Immediately to starboard after the steps is a pocket door leading to the Upper/Lower Cabin. Next forward is a large locker that could house a washer/dryer. Next forward is a door to the dual access Guest Head. All the way forward is the Bow Guest Cabin. At the base of the steps to port is access to the Master Cabin. There are two hatches in the sole offering some storage but primarily access to the head system. Overhead are five LED light fixtures.

Guest Cabin

Behind a teak sliding pocket door is the bunk room with upper and lower bunks each with an Innerspring mattress on the outboard bulkhead. Each bunk has a reading light. There is storage below the lower bunk. Inboard aft is a storage locker above and a half height hanging locker below. Also in this cabin is a Samsung 19" LED TV on the forward bulkhead, a teak and holly sole, a CO monitor, a smoke monitor and rope lighting in valances above both berths.

Master Cabin

To port behind a hinged teak door is the Master Cabin with a queen berth with Innerspring mattress off the aft bulkhead. Small shelves serve as nightstands. Rope lighting behind the upholstered headboard adds accent lighting, twin swing arm lamps flank the headboard. Inboard aft is a full size hanging locker with an auto light and shelves below.

Outboard is one storage cabinet below the nightstand and three above along the hull side. The forward most houses the Master Cabin's Clarion CDM 6 stereo with USB and mini RCA input for external music sources. Also in the cabinet is a bilge alarm panel and the cabin's digital AC controls.

Below is a Samsung LED 19" TV hinged to face the bed. A small Corian shelf below continues into the Head. The Master Head can be left open to the cabin or closed by a unique two piece pocket door.

Also in the Master Cabin are two Polk Audio stereo speakers, nine LED overhead lights, a hidden safe, a teak and holly sole, storage under the berth and a hatch in the sole accessing a surprising amount of storage.

Master Head

Designed to be left open to the Master Cabin, there is a sliding pocket door when needed. The sole is a ceramic tile. The vanity is teak with two storage cabinets below. The Corian countertop has an under mount sink with widespread chrome faucets. A three panel mirror is above with the center piece opening to a two shelf medicine cabinet.

The Vacuuflush head is on a raised pedestal.

The molded stall shower is unusually large with a seat, opening Bomar deck hatch with a sliding Ocean Air screen and shade, a light and a handheld or wall mounted fixture on a Corian panel. A hinged tempered clear glass door and sidelight offer access.

Also in the Head is an exhaust fan, an AC outlet, a GFCI protected outlet, two storage cabinets above the toilet, a Dometic holding tank monitor and four overhead LED lights.

Forward Cabin

The sole of the Forward Cabin is teak and holly. The entry door is hinged. Immediately to starboard is the entrance to the Guest Head.

Next forward is a cedar lined auto lit hanging locker with a storage cabinet below. The lower berth is nearly a full size queen berth with three large storage cabinets below. Each berth has an Innerspring mattress.

At the headboard are twin directional LED reading lights and a shelf as a nightstand with a hinged storage locker above.

The upper berth has a directional LED reading light and a shelf outboard. On the aft bulkhead is a Samsung 19" LED TV.

Overhead is a large Bomar hatch with an Ocean Air sliding screen and shade.

Also in this cabin is a digital AC controller, a smoke and CO alarm and a hatch in the sole accessing the bow thruster.

Guest Head

With dual access doors the Guest Head serves both cabins and with the second door from the Companionway it also serves as a Day Head.

The sole is ceramic tile, the vanity has one teak cabinet below and a Corian countertop with an under mount sink above. There are two mirrored medicine cabinet doors above the sink. Open storage is forward of the mirrored cabinets. The toilet is a Vacuflush model.

The stall shower has a tempered glass split door and a side light. There is a seat, a light and a handheld or wall mounted shower fixture on a Corian panel.

Also in this head is an exhaust fan, an AC vent, four overhead LED lights and an overhead Bomar hatch with an Ocean Air sliding shade and screen.

Foredeck

Fiberglass nonskid sole Molded fiberglass pulpit Stainless steel anchor chute Lewmar all chain windlass Chain stopper Up & down foot switches for windlass Delta fast set plow type anchor Cleat for second anchor line Anchor locker access hatch Quick Disconnect freshwater wash down Fortress FX 16 spare anchor Welded polished stainless steel bow rails - extended further aft than standard Welded polished stainless steel bow pennant staff (3) Bomar Foredeck hatches Snaps & removable cushions for bow sun pad cushions Black painted windshield mask International Navigation lights built into hardtop Dual spring line cleats port & starboard Frameless cabin side windows Powder coated cabin side handrail

Mezzanine Area

Raised Mezzanine w/teak decking Upholstered seating for three Center section folds up for Engine Room access Refrigerated storage under portside (4) JL audio speakers & JL subwoofer Fusion MS-NRX200i wired remote stereo control (2) Overhead lights blue/white/red Raymarine aft looking CCTV camera (9) Comfortable teak steps to Flybridge in lieu of ladder Starboard side sliding entry door to Salon w/large window Hinged storage at step in front of entry door Hinged storage under base of Flybridge steps Large aft facing window to Salon Starboard side fish box macerator

Cockpit

140 Sq. ft. Lower Cockpit Fiberglass nonskid sole Padded Cockpit bolsters (5) Hinged hatches in sole Foldout aft Cockpit seating Custom twin stainless steel pedestal Blue Water table Walk through transom door w/gate 30" Fiberglass swim platform w/custom rub rail Stainless steel telescoping swim ladder under hinged panel Weaver davit for hanging tender on swim platform Oversize Cockpit drains in port & starboard corners Corner hawse pipes at stern cleats (4) Flush mount Lee rod holders Whale wand type freshwater shower at transom door Starboard side golf & brush storage (4) Quick Disconnect freshwater inlet w/hose Quick Disconnect saltwater inlet w/hose Par dockside pressure water inlet w/regulator Port & starboard under deck removable fish wells (large) Pipewelders full overhead folding sunshade Rupp double spreader outriggers

Flybridge

The Flybridge is set up more like a custom boat than a production Sportfish.

A teak centerline pod style helm with single lever controls completes the look. Twin teak Release Marine helm chairs with removable cushions and teak footrests offer great comfort. Guest seating is port and starboard and in front of the helm.

The forward seat converts to a bed and the entire bridge is air conditioned. The factory hardtop and pipework was discarded upon delivery in favor of a new Pipewelders hardtop, marlin tower and all new pipework. The four side P & R canvas tinted enclosure was expertly designed and has been maintained to perfection.

A hinged door covers the steps from below.

Equipment in this area includes:

(2) 15" Raymarine E-165 Hybrid Touch monitors for plotter/radar/depth/Sat weather/CCTV monitor Raymarine Evolution autopilot w/knob control in p70R control head Analog rudder angle indicator To port, hidden switch panel for lighting, pumps, windlass, horn, thruster, etc. In a cabinet below are the start/stop panels, a Fusion MS-iP700i with a remote mounted USB and mini RCA plug for external music source.

Also in this cabinet is a DC outlet and a control for the Flybridge cooler.

To starboard is a hinged panel for the trim tabs with indicator lights and the Glendinning engine controls.

A cabinet below has the ACR spotlight, Flybridge AC controls and a GFCI 110V volt outlet.

Ongaro stainless steel wheel w/Tiara speed knob Teak helm console Glendinning single lower engine controls CAT single color LED engine monitor (2) Stainless steel drink holders (2) AC vents at helm aft Ritchie 4" magnetic compass Raymarine Ray 260 Black Box radio w/remote speaker Marine Air 16,000 BTU bridge air system Hinged access to under helm (2) AC vents forward at helm JL Audio amplifier for stereo Removable Flybridge teak table stows under

Flybridge cowling includes (4) stainless steel cup holders Rod storage under Flybridge cowling Majestic Terrestrial TV antenna Large U Zip forward at helm Freshwater wash down Quick Disconnect (4) JL stereo speakers Cabinet below helm w/fuel gauges, Fireboy controls Port & starboard U Zips Large U Zip aft of center helm chair 7 Place rocket launcher on aft rail Drink cooler aft of starboard side curved seat Storage locker aft of portside curved seat (6) Overhead lights red/blue/white

Tower

Pipewelders marlin tower, new Spring 2014, includes the following equipment:

Integrated Flybridge hardtop w/lighting overhead (6) red/white/blue Integrated spreader lights aft & nav lights (port & starboard) Port or starboard ladder access to Tower Deluxe helm pod w/wheel steering, storage box for electronics outlets, Glendinning controls Raymarine 12" E-120 Hybrid Touch full function remote Raymarine autopilot remote full function control helm Raymarine Ray 55 VHF Fusion MS-NRX-2000i stereo remote Stop buttons (2) Built in drink holders CAT Engine control screen Carbon fibre buggy top w/overhead lighting Bench seat for three people w/custom wraparound padded backrest & folding footrest (2) JL audio speakers (2) Khahlenberg trumpet air horns ACR RCL-100 spotlight w/controls at helm Intellan Sat TV dome

Engine Room

C-18 Acert engines 1015 HP w/205 hrs. Heavy Duty engine mounts Cat Engine Room direct reading gauges for tachometer, oil pressure, water temp Groco sea valves & strainers Custom toilet w/hinged starboard top Racor 1000 MA fuel filter for each engine (2) Spin on fuel filters for generator CAT coolant recovery bottles 72 lb. FE 241 fire control system Raymarine Engine Room CCTV camera (2) Engine Room blowers Watermakers Inc. Islander 400 module watermaker w/70 hrs. (250 GPD) Remote mount freezer controls w/digital indicator Groco 6 point oil change system ZF 510-1A 2 to 1 reduction transmissions De Angelo Marine exhaust w/hard wrap coating AC LED Engine Room lights DC LED Engine Room lights Remote mount oil filters for ease of service Engine Room blowers Polished stainless steel panels above engines & outboard of engines act as mirrors Aircep crankcase ventilation system Delta T Engine Room fans (2) Coolant recovery bottles for generators 24 Volt bow thruster Macerator for waste system Custom stainless safety rails around engines

Electrical

12/24 volt DC electrical system 110/220 volt AC electrical system Onan/Cummins 13.5 KW generator w/381 hrs. in hush box Onan/Cummins 5 KW generator w/57.1 hrs. in hush box GFCI outlet in Engine Room Engine Room master panel w/remote mount battery switches Engine Room master panel w/(7) breaker protected 12V circuits Engine Room master panel w/(18) breaker protected 24V circuits Underwater light switch at Engine Room panel (3 lights), blue

Xenon 50 watt (3) Battery switches w/parallel solenoid Victron Energy 80 amp 24 volt charger Vanner 100 amp battery equalizer system (8) Group 31 engine batteries for starting/+house system

Main AC panel w/the following equipment: (2) Analog voltmeters (2) Analog amp meters Switch/breakers for Shore 1/Gen 1/Gen 2 (18) 110 Volt breaker protected circuits (9) 220 Volt breaker protected circuits

Main DC panel w/the following equipment: Analog voltmeter Analog amp meter (40) 12 Volt breaker protected circuits Battery meter selector switch 24V/House/24V Engine/12Volt house All GFCI's are at main electrical panel Water tank & toilet tank LED gauge at main electrical panel Intellian Sat TV control at main electrical panel Salon AC digital controls at main electrical panel

Remarks

Actual LOA is 53'11". It would be hard to imagine a nicer or better equipped 48 Tiara. MIMOSA was well planned, well executed and has been maintained to perfection.

The invoice at Pipewelders was \$123,000 for the top, enclosure, riggers, etc!

Anyone looking at a midsize Sportfisherman owes it to themselves to take a very close look at MIMOSA!

Exclusions

While every effort was made to list all pertinent included equipment aboard MIMOSA, there are some personal belongings aboard. Prospective purchasers should assume any item not specifically mentioned herein will not convey at closing. Some items in the photos that do not convey are the tender, outboard and mounting bracket, teak storage box at entryway and binoculars.

Exclusions

Owner's personal belongings.

Disclaimer

The Company offers the details of this vessel or yacht in good faith but cannot guarantee or warrant the accuracy of this information nor warrant the condition of the vessel. A buyer should instruct his representatives, agents, or his surveyors, to investigate such details as the buyer desires validated. This vessel or yacht is offered subject to prior sale, price change, or withdrawal without notice.

PHOTOS

Salon to Port



Salon Looking Aft



Salon to Starboard



Salon 40" LED TV



Salon Wine Cooler**Salon Electrical Locker****Salon Table****Dining Table****Galley Looking Forward****Galley Looking Aft**

Microwave**Companionway****Storage Below Steps****Companionway Storage**

Starboard Cabin Looking Aft



Starboard Cabin Looking Forward



Master Cabin



Master Looking Aft



Master Looking to Port



Storage Below Master Sole



Master Looking Forward



Master Head/Shower



Master Head**Forward Cabin****Forward Cabin****Forward Cabin TV**

Forward Head**Forward Shower****Bow Sun Pad****Bow Sun Pad**

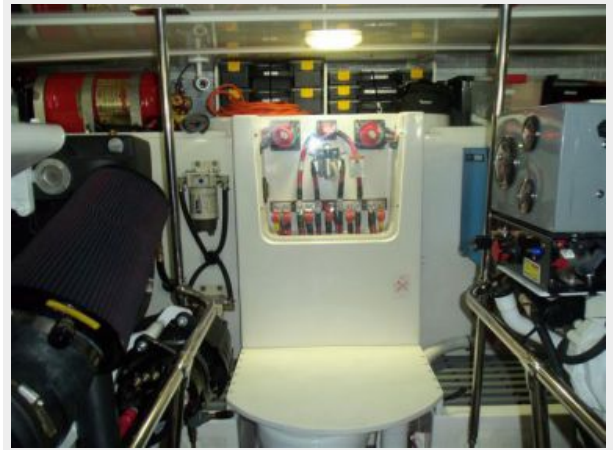
Bow Looking Aft**Pulpit/Windlass****Walk Around Side Decks****Transom****Mezzannine Seating****Raised Mezzannine**

Custom Cockpit Table**Custom Table****Fold Down Transom Seat****Easy Access Flybridge**

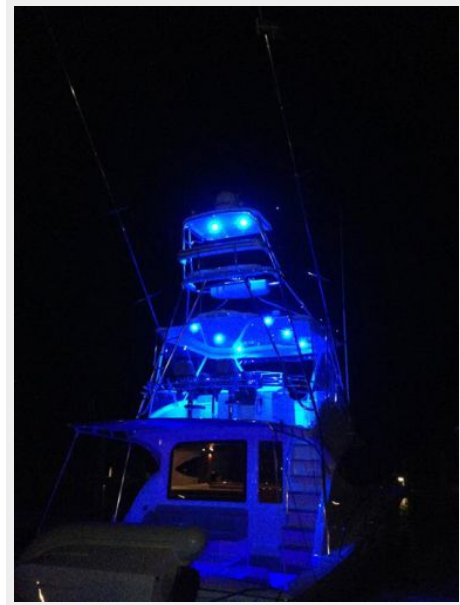
Flybridge Steps**Helm****Helm Portside****Helm**

Helm Starboard Side**Helm Chairs****Flybridge Table****Flybridge Seating****Flybridge Portside****Flybridge Starboard Side Drink Cooler**

Flybridge Under Helm AC & Refrigeration**Tower Helm****Tower FRP Buggy Top****Tower Seating****Custom Instrument Pod****12 KW 6' HD Radar**

Starboard Engine**Engine Room Forward****Port Engine****Fuel Filters****Custom Engine Room Toilet****Water Maker**

Water Maker/Refrigeration**Battery Charger****Generator****5 KW Generator**

Engine Room Panel**Blue LED Lighting****Old Tiara Tower Removed****Maiden Voyage**

Bow View



Alternate Profile



Tower



Tiara



Layout



CONTACTS

Andrey Shestakov, leading yacht broker of the sales department of Shestakov Yacht Sales Inc. Shestakov Yacht Sales Inc., the official representative of the Miami/Fort Lauderdale FL headquarters.

Contact details

Email: **andrey@shestakovyachtsales.com**

Web: shestakovyachtsales.com/en/

Telephones

USA: **+1(954)274-4435**

Office hours

Monday – Saturday: **9:00 - 21:00 EDT**

Sunday: **closed**

Address



Harbour Towne Marina, 850 NE 3rd St,
STE 213, Dania, FL 33004