

BELIEVE — MARQUIS



Судостроитель: MARQUIS

Год постройки: 2005

Модель: Моторная яхта

Цена: **ЦЕНА ЯХТЫ ПО ЗАПРОСУ**

Местонахождение: United States

Длина общая: 65' 0" (19.81m)

Ширина: 17' 11" (5.46m)

Макс. осадка: 6' 0" (1.83m)

Крейс. скорость: 24 Kts. (28 MPH)

Макс. скорость: 30 Kts. (35 MPH)

Купить **Believe — MARQUIS** а также выбрать подходящую вам яхту из нашего каталога яхт вам поможет опытный яхтенный брокер Андрей Шестаков. На сегодняшний день компания **Shestakov Yacht Sales Inc.** имеет большое количество яхт в собственном списке продаж, а также тесно сотрудничает со всеми крупными яхтенными производителями по всему миру.

Для того чтобы купить яхту **Believe — MARQUIS** а также проконсультироваться по любому вопросу связанному с покупкой, продажей, чартером яхт позвоните по телефону **+7(918)465-66-44**.

ОГЛАВЛЕНИЕ

ОГЛАВЛЕНИЕ	2
ХАРАКТЕРИСТИКИ	7
Обзор	7
Основная информация	8
Размеры	8
Скорость, вместимость и масса	8
Размещение	8
Корпус и палуба	9
Информация о двигателе	9
ПОДРОБНОЕ ОПИСАНИЕ	10
Vessel Overview	10
Salon	10
Galley	12
Dinette/Lounge	12
Master Stateroom and Master Heads	12
VIP Stateroom and Head	14
Guest Stateroom and Guest Head	14
Bridge	15
Mechanical	16
Electronics	18
Deck/Misc	18
Disclaimer	20
Исключения	20
Отказ от ответственности	20
ФОТОГРАФИИ	21
Underway-Bow on	21
Underway-Port Quarter	21
Underway-Port Quarter2	21

Underway-Portside	21
Bow view facing aft	21
Bow view with covers	21
Stern view at dock (2)	22
Stern view at dock	22
Port side deck looking forward	22
Strb side deck looking aft	22
Salon entry door closed	23
Salon entry door open	23
Salon facing forward	23
Salon port side facing aft	23
Salon strb side facing aft	23
Galley and lounge area facing forward	23
Galley and lounge area facing aft	24
Salon storage cabinet	24
Salon stairway	24
Salon ceiling inlay	24
Salon stairs to bridge	25
Galley	25
Galley	25
Dinette/lounge area	25
Dinette/lounge area	26
Dinette/lounge area	26
Alcove	26
Master SR entrance	26
Master SR berth	26
Master SR looking forward	26
Master stateroom TV	27
Washer/dryer	27

Master stateroom with portside head	27
Washer/dryer	27
Master head starboard	28
Master head	28
Master head	28
Master head shower/tub	28
VIP stateroom	29
VIP stateroom	29
Head VIP	29
VIP stateroom	29
Guest SR	30
Guest stateroom TV	30
Guest head	30
Guest head	30
Bridge helm	30
Bridge helm with covers	30
Bridge deck facing aft	31
Bridge deck facing aft	31
Bridge deck facing aft with covers	31
Bridge deck	31
Bridge wetbar	31
Bridge wetbar	31
Bridge steps to cockpit	32
Bridge access to cockpit steps	32
Bridge access to cockpit-closed	32
Aft bridge deck gas grill	32
Aft bridge deck propane grill	33
Aft bridge deck gas grill closed	33
Helm	33

Helm	33
Helm	33
Engine Room	33
Engine room facing forward	34
Strb engine	34
Transmission Port Engine	34
Fuel polishing system	34
Port engine looking aft	34
Strb engine looking aft	34
Engine room looking aft	35
Engine room looking forward	35
Strb engine	35
Engine room looking forward (3)	35
Forward of strb engine	36
Port engine forward bulkhead	36
Transmission	36
Transmission	36
Strb engine	37
Engine room looking forward(2)	37
Cockpit with covers	37
Cockpit	37
Cockpit controls	38
Transom boarding gate and bollard	38
Strb deck looking forward	38
Strb deck looking aft	38
Stern view-night time	39
КОНТАКТЫ	40
Контактная информация	40
Телефоны	40

Время работы	40
Адрес	40

ХАРАКТЕРИСТИКИ

Обзор

PRISTINE 2005 MARQUIS 65 MOTORYACHT

PRICE REDUCED - \$1,299,000

This is a beautiful, highly customized, original owner 65 ft. Marquis Motoryacht. It has the upgraded MTU 10V2000-1500hp power option with only 650 hrs. and the larger 28kw Kohler generator. The three stateroom layout includes the optional dual masterhead arrangement with "His" and "Her" head compartments. In addition this layout also features the crew cabin option located aft of the engine room. *The entire vessel was painted with Awlgrip in 2011 from the waterline up.*

The interior was remodeled in 2010/2011 to include custom built sofa, custom built cherry cabinets, new ultra leather furniture and new carpet. The dinette and galley area have a custom granite flooring which matches the granite galley counter tops. The lower helm was removed and replaced by a custom couch and cabinetry for an improved look and increased space.

The customized bridge is enclosed by hardglass and is serviced by two bridge dedicated air conditioning units for maximum comfort. A solid custom see through hinged door separates the bridge deck from the aft bridge deck where a propane gas grill is housed in a custom enclosure.

The vessel has bow and stern thrusters for ease of docking. There is a hydraulic swim platform and the engine room is spotless.

You must come aboard to appreciate the care that has been taken of this vessel since new. The owner uses custom made covers for all exterior cushions, chairs and tables. These covers are *always* used after each trip to provide added protection to these features. The stainless rails and fittings look like new and the Awlgrip paint shines beyond that of any gelcoated boat.

If you are looking for a meticulously maintained and customized one owner motoryacht you need to personally inspect this vessel.

PRICE REDUCED - ASKING \$ 1,299,000

Основная информация

Тип судна: Моторная яхта

Подкатегория: Flybridge

Модельный год: 2005

Год постройки: 2005

Страна: United States

Верх: 2363

Размеры

Длина общая: 65' 0" (19.81m)

Ширина: 17' 11" (5.46m)

Макс. осадка: 6' 0" (1.83m)

Трапы: 24' 5" (7.44m)

Скорость, вместимость и масса

Крейс. скорость: 24 Kts. (28 MPH)

Макс. скорость: 30 Kts. (35 MPH)

Водоизмещение: 94000 Pounds

Вместимость воды: 200 Gallons

Вместимость сточного бака: 150 Gallons Объем топливного бака: 1400 Gallons

Размещение

Всего кают: 3

Всего коек: 3

Спальные места: 6

Всего ком. состава: 4

Каюты экипажа: 1

Койки экипажа: 2

Спальных мест экипажа: 2

Комм. состав экипажа: 1

Корпус и палуба

Материал корпуса: FRP

Материал палубы: Fiberglass Sandwich

Комплектация корпуса: Modified V-Hull

Цвет корпуса: White

Отделка корпуса: Stainless Steel

Информация о двигателе

Двигатели: 2

Производитель: MTU

Модель: 10V2000

Тип двигателя: Inboard

Тип топлива: Diesel

ПОДРОБНОЕ ОПИСАНИЕ

Vessel Overview

Believe is a highly customized and meticulously maintained 2005, Marquis 65 Motoryacht. It has the **optional upgraded MTU 10V2000-1500hp power package with only 650 hours** for enhanced performance and the optional upgraded 28kw Kohler generator.

The original owner has done extensive customizing to include **complete Awlgrip paint from the waterline up in 2011**. No more chalky or dull gel coat and it shines better than new. Also in **2011 the owner replaced salon furniture with ultra leather and installed new carpet**. The lower helm was removed and there is now a **custom built u-shaped sofa with cherry wood table and custom cherry cabinets**. This dinette/sofa area offers a granite floor and custom indirect lighting. The galley also offers granite flooring, granite counter tops and cherry veneer on the appliances for a finished and integrated appearance.

The bridge helm features a **Stidd helmseat** and in 2010 an **additional air conditioning unit was added to the bridge** with a dedicated pump for a total 40k BTU cooling capacity on the bridge. The bridge was enclosed with clear hardglass and there is a custom made **clear plexiglass hinged door** that leads to the aft bridge deck. This eliminates the inconvenience of the typical zippered opening. The aft deck also features a **stainless propane grill in a custom cabinet**.

Believe also offers the optional **"His" and "Hers" Master Stateroom Head arrangement**.

The engine room is not only large with excellent access but is spotless. There is a **fuel polishing system** installed on the aft bulkhead. Believe also features the **crew quarters option** located just aft of the engine room.

The owner has custom made covers for all exterior cushions, seats and tables which are used whenever Believe is not underway. The only way to truly appreciate the condition and care that has been given to this yacht since new is to view it in person.

Please see the entire listing for additional custom features and equipment detail.

Salon

The large salons' primary entrance is through a large sliding door leading from the cockpit into the salon. This door is tinted for privacy and has a separate sliding screen that can be closed if you want to leave the main door open. All of the salon side windows are tinted for privacy and heat reduction and have Roman shades with recessed headrails.

The interior is finished with cherry wood. On the port side is an ultra leather couch with storage beneath and two ultra leather recliner chairs. There is also a cherry wood coffee table located

next to the couch. Located to starboard as you enter are two barrel chairs and a cherry wood cabinet which houses the retractable flatscreen television. The entire salon has light colored thick pile capet which blends beautifully with the cherry wood accents and trim. Even the ceiling carries the light color headliner with cherry wood bussola inlay and has recessed lighting.

Moving forward on the starboard side is the bridge stairway leading from the salon to the bridge. It has circular, polished stainless steel post and step supports with etched glass steps. These have been customized and are lighted for a very impressive and unique look.

Just forward of the stairway is a custom cherry wood storage cabinet with granite counter top and granite floor trim at the base. And located just forward of the cabinet is a heavy duty door with direct access to the starboard side deck. Continuing forward leads to the spiral stairway leading to the lower deck accommodations.

On the port side, just forward of the salon couch is the well equipped galley which is separated from the custom circular dinette/lounge area by a low counter top just forward of the galley.

This entire area except for the custom dinette/lounge is on the same level and is very open and spacious. The large sliding door and side windows allow plenty of light for a very open feel. The forward windshield allows a panoramic view or can be covered with the windshield covers for increased privacy if needed. The entire interior show as new and boasts a full entertainment system with stereo and satellite TV capability.

Additional and notable salon features:

- * Ultra leather couch with integrated storage- **New in 2011**
- * Carpet - **New 2011**
- * Removable carpet runners for added protection
- * Plasma flat screen TV electrically raises from cherry wood storage cabinet
- * Entertainment center which includes stereo, DVD player and satellite radio system
- * All lighting on dimmer control switches
- * Stairs leading to flybridge have custom LED lighting for unique lighting effect-**UPGRADE**
- * Custom cherry wood with marble top storage cabinet located just forward of bridge stairway with marble flooring trim around base - **UPGRADE**

Galley

The beautiful well equipped galley is located on the port side and is on the same level as the salon. It has abundant counter space and storage. The counter tops are granite as well as the flooring. There is a two basin stainless steel sink and a recessed coffeemaker. Other galley features include:

- * Refrigerator/Freezer, Jenn-Air full size side by side. Cherry wood veneer front in place of the brushed stainless for an upgraded appearance. - **UPGRADE**
- * Microwave/Convection Oven built in. Brushed stainless steel finish - Kitchen Aid
- * Range is electric 3 burner, Ceran top with brushed stainless steel backsplash
- * Range hood is brushed stainless steel with lights, exhaust fan and outside vent
- * Dishwasher with cherry wood veneer front - Miele G832SC - **UPGRADE**
- * Trash compactor with chery wood veneer - GE Profile - **UPGRADE**
- * Built in Coffeemaker - Cruisinart

Dinette/Lounge

The dinette/lounge area is a custom area located all the way forward on the portside of the main deck. The lower helm station was originally located in this area and the owner had it removed in 2011. A custom built u-shaped sofa was made along with an elegant cherry wood table. Custom cherry wood cabinets were added forward along with a flat screen tv. This area is raised by one step for an excellent view when dining or lounging and has a granite floor. There is also custom indirect lighting in this area. Features include:

- * Custom U shaped sofa - **UPGRADE**
- * Custom cherry wood table - **UPGADE**
- * Custom cherry wood cabinets - **UPGRADE**
- * Granite flooring - **UPGRADE**
- * Flat screen TV - Toshiba - **UPGRADE**

Master Stateroom and Master Heads

The master stateroom on Believe is *huge*. It is located amidships where the boat is the quietest and is most stable. It is full beam which accounts for it's impressive size. Once you descend the

stairs from the salon to the living deck level the flooring is Italian marble with lighted, stylized black granite *bussola* inset. There is a foyer area directly aft and the alcove has a cherry wood curved back and top with recessed lighting and storage area.

Continuing aft you enter the master stateroom itself which has a California King berth with inner spring mattress which is located along the port side. There is a nightstand located on each side of the bed with plenty of walkaround space. There is ample overhead lighting which is connected to dimmer switches. There are large portholes on each side of the stateroom for breathtaking views when desired or Roman shades for complete privacy.

Along the aft bulkhead are cherry wood cabinets and private entrances to the **His and Her Heads with separate shower and full size tub**. In this optional arrangement there is a complete head with private entrance on the port side and another complete head with private entrance on the starboard side. Located between the two heads is a large shower with a full tub. The clear glass enclosure has an electrically activated "fogging" feature which provides privacy in the shower when desired. Both heads feature a full vanity and full size electric flush toilets. This is the ultimate in cruising convenience for a couple.

Along the starboard side of the master stateroom is a cherry wood cabinet that houses the flatscreen television with storage drawers located underneath. Just forward of that is a small couch for comfortable seating. Moving forward along the starboard side in the master stateroom is a large walk in closet accessed by two solid cherry wood doors. There is a large amount of room for hanging clothes and the **optional washer and dryer** are also located in this closet area. There are additional storage cabinets and still ample room to walk in and move around within the closet area.

This stateroom seems to belong on a much larger vessel and has an exceptional layout with the His and Hers Head layout.

Notable Features or Upgrades:

- * Optional Dual Master Head Option - **UPGRADE**
- * Optional Washer and Dryer in walk in closet - **UPGRADE**
- * California King berth with inner spring mattress
- * Large portlights with Roman shades for privacy
- * Flat screen TV in cherry wood cabinet
- * Sitting couch
- * Berth nightstands with Italian marble inlay top and cherry wood sea rail
- * Dresser with drawers for storage
- * Stateroom level foyer with alcove

* Full beam master for maximum space

VIP Stateroom and Head

The VIP stateroom is located all the way forward and features a centerline Queen with inner spring mattress. There are berth nightstands with storage beneath. The headboard is mirrored and there is an overhead hatch. Portlights have Roman shades for privacy and the wardrobe locker is full height and is cedar lined. There is also a built in flat screen television.

The VIP head is located on the starboard side just aft of the stateroom. The private entrance from the stateroom is by a solid cherry wood door. The head features a vanity and a medicine cabinet. There is a sink and full size electric flush toilet. The separate shower stall has an integral bench seat and a detachable shower head for use as a hand shower. There is a portlight with screen.

Notable features or upgrades:

- * Queen size berth with innerspring mattress
- * Berth nightstands with storage
- * Full length hanging locker that is cedar lined
- * Flat screen TV
- * Private entry to VIP head
- * Head has vanity and medicine cabinet
- * Head has full size electric flush toilet
- * Separate shower stall

Guest Stateroom and Guest Head

The quest stateroom is located on the port side forward of the master stateroom. The quest head

is conveniently located just forward of the guest stateroom and can be accessed directly from the guest stateroom or from the foyer to serve as a dayhead.

The stateroom has two berths with innerspring mattress and a berth nightstand with sapele prommele wood inlay top and Ultraleather upholstered bolstered sea rail with drawer beneath. There is also a full height cedar lined hanging locker and portlight with Roman shades for privacy. A flat screen TV is mounted in the forward bulkhead and the entire stateroom has dimmable lighting.

The guest head can be accessed directly from the forward end of the stateroom by a solid cherry wood door. The head offers a full vanity with sink, and electric flush full sized toilet and mirrored bulkhead over the vanity. There is a separate shower stall with integral bench seat and detachable shower head. This head can also be accessed directly from the foyer by a separate cherry wood door so it can be used as a day head or a private head for the guest stateroom.

Notable features or upgrades:

- * Twin berths with innerspring mattress
- * Berth nightstand
- * Custom overhead cherry wood cabinets for increased storage - **UPGRADE**
- * Full height cedar lined hanging locker
- * Flat screen TV - **UPGRADE**
- * Guest head can be accessed directly from the stateroom or the foyer
- * Guest head has separate shower stall

Bridge

The bridge is very large and not only offers a commanding view for the captain from the helm, but is a perfect area to entertain guests. The bridge can be accessed from the stairway inside the salon or by the wide stairs directly from the cockpit. Both have access hatches that can be closed and secured.

On Believe the bridge was enclosed by clear hardglass in 2010. A very unique feature is the **clear plexiglass door that leads from the main bridge deck to the aft deck**. No need to unzip an access panel here since this is a solid hinged door so access is unencumbered. The entire bridge is air conditioned and a **second air conditioning unit was added for a total of 40k BTU just for the bridge**. This unit runs off a dedicated pump and a back up pump is installed just in case of a problem. A new stereo and speakers were also installed along with

a **custom cherry wood table** and additional bridge indirect lighting.

The standard bridge helm chair was replaced with a **Stidd helm chair** for maximum comfort for the captain. The helm layout features twin Raymarine color displays for chartplotter, radar and sounder functions. There is autopilot control as well as controls for the **bow and stern thrusters**. Two companion chairs are located to port of the helmsman chair.

Just aft of the companion chairs is a curved wet bar with cabinets beneath. This also houses a dedicated **ice maker**, an **under the counter refrigerator** and an **electric grill** to make entertaining on the bridge easy and convenient. This area is also wired for television so a tv can be placed in the bar area.

Moving aft on the starboard side is a large lounge with the custom cherry wood table and two additional deck chairs for entertaining. On the aft bridge deck is a **stainless propane grill in a custom built cabinet**.

Notable features or upgrades:

- * Clear hardglass enclosure installed 2010 - **UPGRADE**
- * Clear plexiglass custom door leading from main bridge deck to aft deck - **UPGRADE**
- * Additional air conditioning unit added to bridge for a total of 48k BTU - **UPGRADE**
- * Standard helm chair replaced with Stidd helm chair - **UPGRADE**
- * Bridge wired for television with satellite receiver - **UPGRADE**
- * Refrigerator, ice maker and electric grill installed in wet bar - **UPGRADE**
- * Stainless steel propane grill in custom cabinet on aft bridge deck - **UPGRADE**
- * Custom cherry table at lounge - **UPGRADE**

Mechanical

Believe features the **optional MTU 10V2000-1500hp diesels with only 650 hours**. This upgraded power package provides increased performance when desired. The generator is the **optional 28kw Kohler** which is housed in a sound shield located in a separate generator room. Believe is also equipped the **optional 200 gallon auxillary fuel tank** for extended range. The engine room is extremely spacious, meticulously kept and offers stand up head room and excellent engine and systems access. Entry to the large engine room can be via a hatch in the cockpit sole or a walk in water tight door located in the transom.

You really must see the engine room to appreciate the care that has been given this vessel since

new. There is a **fuel polishing system** installed in the engine room as well as **electric fuel priming pumps** to aid when changing out fuel filters, All of the batteries have been updated to **glass mat** and all Mastervolt **battery chargers were replaced in 2012**. There are two cablemasters with handheld remotes.

A set of **spare props** that are tuned for the boat are included with the sale.(the cost of these new props was approx. \$26k) There is also a 24v back up freshwater pump wired and plumbed to back up the 110v pump. Engine room lighting is provided by 18W Xenon overhead lights for a brightly lit engine room space.

Notable features and upgrades:

- * MTU 10V2000-1500hp with only 650 hours - **UPGRADE**
- * Kohler 28kW Generator with 1100 hours and sound shield - **UPGRADE**
- * Auxilliary Fuel Tank, 200 gals. - **UPGRADE**
- * Algae X fuel polishing system - **UPGRADE**
- * Electric fuel priming pumps - **UPGRADE**
- * Glass matt batteries - **UPGRADE**
- * Mastervolt battery chargers new 2012 - **UPGRADE**
- * Two Cablemasters
- * Spare Propellers - **UPGRADE**
- * Backup 24v freshwater pump - **UPGRADE**
- * Bow and Stern Thrusters

Electronics

Believe has a full array of electronics for all navigational and entertainment needs. The vessel is equipped with five Direct TV satellite receivers which provide separate signals for the bridge, the salon and each stateroom individually. In addition there are aft deck cameras and engine room cameras that can be monitored through the the dedicated screen located at the helm. Sirius weather and Direct TV can also be monitored through the chartplotters. A full audio/visual entertainment center is installed in the salon and each stateroom has it's own stereo system.

The bridge also has it's own stereo system. There are two Raymarine E120 display units which display chartplotter information, radar display and bottom sounder images. There is also a Raymarine VHF, Raymarine Auto Pilot and controls for the remote ACR spotlight. Shift and throttle emergency controls are also located at the helm along with the digital engine display gauges.

Notable features and upgrades:

- * Two Raymarine E120 display units, they also display cockpit and engine room cameras, Sirius weather and Direct TV. Displays integrated radar and bottom sounder functions.

- * Raymarine autopilot with remote - ST8001

- * Raymarine VHF - Ray240

- * Raymarine TriData ST60

- * Stereo - Clarion

- * Digital engine displays (2)

- * Dedicated display screen for onboard cameras

- * Sea Key locator system installed (requires subscription service)

- * 32 inch removable flat screen TV for bridge

Deck/Misc

The 114 sq. ft. cockpit is entered from the hydraulic swim platform via one of two stainless transom gates located port and starboard. There are storage compartments just below the large stainless bollards and fairleads located port and starboard with a freshwater shower. In the forward starboard corner of the cockpit are cockpit engine and thruster controls for ease of

docking. The engine room access hatch is located in the cockpit sole and is guttered and watertight with gas shocks for easy operation.

A large seating lounge runs across the transom with a cherry wood table and three free standing deck chairs. Overhead recessed lighting provides the illumination for evening cocktails and the bridge stairway has 10 inch risers, stainless steel handrails, diamond non-skid pattern and courtesy lighting for direct safe access to the bridge.

Both port and starboard side decks are directly accessible from the cockpit and they are wide and well protected by high bulkheads. Courtesy lights along the deck make night transit secure and the large 1.25" diameter bow rails forward add to on deck security.

The foredeck has a polished stainless steel anchor plate with a recessed stainless anchor channel. The fore deck locker contains the electric windless and bollard style anchor cleat. Two additional in deck lockers provide additional storage for line and fenders and they are self draining. Another locker in the superstructure forepeak houses freshwater washdown, shorepower connectors and two lockers in the superstructure gull wing doors provide additional on deck storage.

A double sunpad is secured to the bow for sunbathing or just relaxing.

There are two Marquipt boarding ladders that are included with the sale of Believe to allow for easy boarding in a variety of docking situations.

Notable features and upgrades:

- * Electric anchor windless- Maxwell 4000
- * Hydraulic swim platform
- * Cockpit engine and thruster controls - **UPGRADE**
- * Stainless steel boarding gates port and starboard on transom
- * Sunpad cushion on bow
- * Removable windshield covers
- * Anchor light mast hinged providing additional 18" clearance- **UPGRADE**
- * Two Marquipt boarding ladders included - **UPGRADE**
- * Two spare 50 amp shorepower cords

Disclaimer

The Company offers the details of this vessel in good faith but cannot guarantee or warrant the accuracy of this information nor warrant the condition of the vessel. A buyer should instruct his agents, or his surveyors, to investigate such details as the buyer desires validated. This vessel is offered subject to prior sale, price change, or withdrawal without notice.

Исключения

При продаже яхты исключаются личные вещи владельца.

Отказ от ответственности

Компания предоставляет описание судна или яхты добросовестно, но не может гарантировать точность этой информации, а также не ручается за техническое состояние. Покупатель должен проинструктировать своих агентов или оценщиков исследовать представленную информацию более подробно, по собственному желанию. Продажа судна или яхты, изменение цены или снятие с продажи будет происходить без предварительного уведомления.

ФОТОГРАФИИ

Underway-Bow on



Underway-Port Quarter



Underway-Port Quarter2



Underway-Portside



Bow view facing aft



Bow view with covers



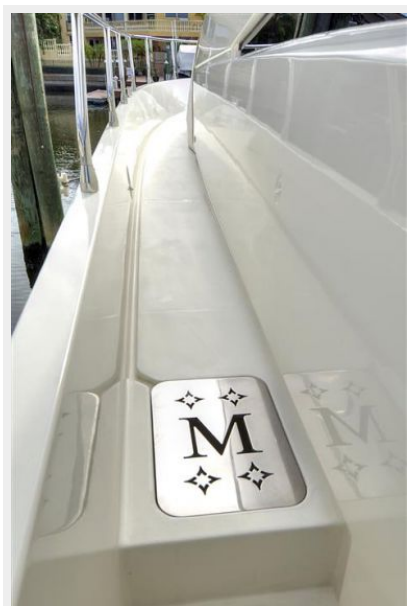
Stern view at dock



Stern view at dock (2)



Port side deck looking forward



Strb side deck looking aft



Salon entry door closed



Salon entry door open



Salon facing forward



Salon port side facing aft



Salon strb side facing aft



Galley and lounge area facing forward



Galley and lounge area facing aft



Salon storage cabinet



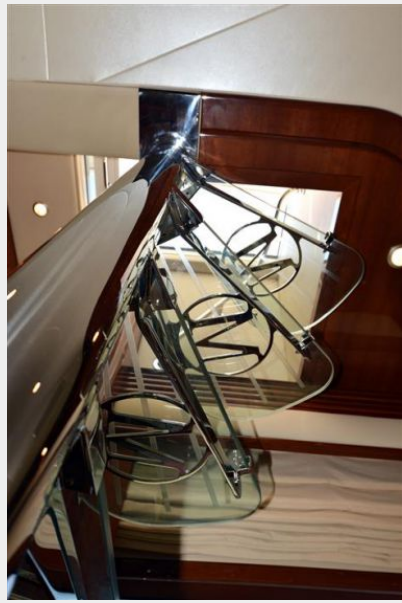
Salon stairway



Salon ceiling inlay



Salon stairs to bridge



Galley



Galley



Dinette/lounge area



Dinette/lounge area



Dinette/lounge area



Alcove



Master SR entrance



Master SR berth



Master SR looking forward



Master stateroom TV



Washer/dryer



Master stateroom with portside head

Washer/dryer



Master head starboard



Master head



Master head



Master head shower/tub



VIP stateroom



VIP stateroom



Head VIP

VIP stateroom



Guest SR



Guest stateroom TV



Guest head



Guest head



Bridge helm



Bridge helm with covers



Bridge deck facing aft



Bridge deck facing aft



Bridge deck facing aft with covers



Bridge deck



Bridge wetbar



Bridge wetbar



Bridge steps to cockpit



Bridge access to cockpit steps



Bridge access to cockpit-closed



Aft bridge deck gas grill



Aft bridge deck propane grill



Aft bridge deck gas grill closed



Helm



Helm



Helm



Engine Room



Engine room facing forward



Strb engine



Transmission Port Engine



Fuel polishing system



Port engine looking aft



Strb engine looking aft



Engine room looking aft



Engine room looking forward



Strb engine



Engine room looking forward (3)



Forward of strb engine



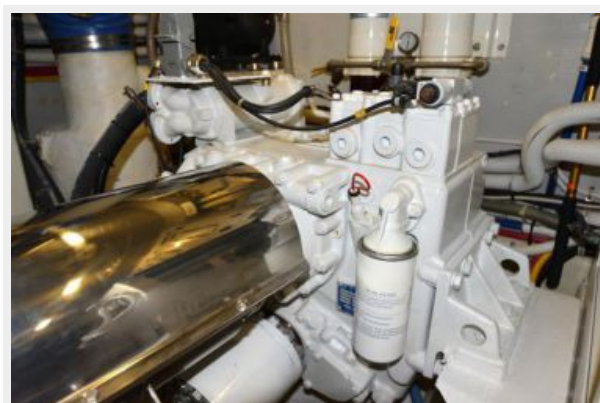
Port engine forward bulkhead



Transmission



Transmission



Strb engine



Engine room looking forward(2)



Cockpit with covers



Cockpit



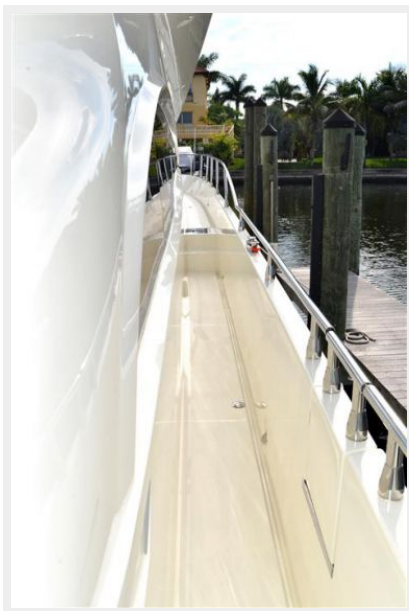
Cockpit controls



Transom boarding gate and bollard



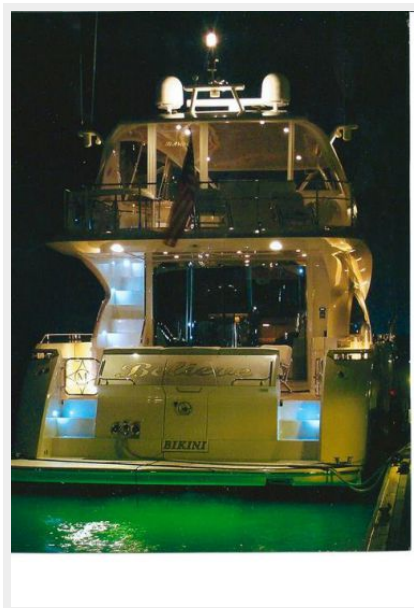
Strb deck looking forward



Strb deck looking aft



Stern view-night time



КОНТАКТЫ

Андрей Шестаков (Andrey Shestakov) – ведущий яхтенный брокер отдела продаж яхт и судов компании Shestakov Yacht Sales Inc. Официальный представитель Shestakov Yacht Sales Inc. для русскоговорящих клиентов в центральном офисе компании в Майами/Форт Лодердейл/Флорида/США.

Контактная информация

Email: andrey@shestakovyachtsales.com

Web: shestakovyachtsales.com

Телефоны

Краснодарский край: **+7(918)465-66-44**

США, Майами, Флорида: **+1(954)274-4435**

Время работы

Понедельник – Суббота: **9:00 - 21:00**
EDT

Воскресенье: **Закрето**

Адрес



Harbour Towne Marina, 850 NE 3rd St,
STE 213, Dania, FL 33004