

BALAJU — INTERMARINE



Builder: INTERMARINE

Year Built: 2002

Model: Motor Yacht

Price: PRICE ON APPLICATION

Location: United States

LOA: 146' 0" (44.50m)

Beam: 28' 0" (8.53m)

Max Draft: 9' 0" (2.74m)

Cruise Speed: 12 Kts. (14 MPH)

Max Speed: 16 Kts. (18 MPH)

Our experienced yacht broker, Andrey Shestakov, will help you choose and buy a yacht that best suits your needs **BALAJU — INTERMARINE** from our catalogue. Presently, at Shestakov Yacht Sales Inc., we have a wide variety of yachts available on our sale's list. We also work in close contact with all the big yacht manufacturers from all over the world.

If you would like to buy a yacht **BALAJU — INTERMARINE** or would like help answering any questions concerning purchasing, selling or chartering a yacht, please call **+1(954)274-4435**

TABLE OF CONTENTS

TABLE OF CONTENTS	2
SPECIFICATIONS	4
Basic Information	4
Dimensions	4
Speed, Capacities and Weight	4
Accommodations	4
Hull and Deck Information	5
Engine Information	5
DETAILED INFORMATION	6
VESSEL WALKTHROUGH	6
ENTERTAINMENT EQUIPMENT	6
GALLEY & LAUNDRY EQUIPMENT	7
ELECTRICAL SYSTEM	7
MECHANICAL EQUIPMENT	8
ELECTRONICS	8
SAFETY AND FIRE PROTECTION	8
DECK EQUIPMENT	9
TENDERS & TOYS	9
REMARKS	10
Exclusions	10
Disclaimer	10
PHOTOS	11
Main Salon	11
Profile	11
Dining Salon	11
Main Salon	11
Skylounge	12
Foyer	12

Master Stateroom	12
Master Stateroom	12
Owner's Suite Sofa	12
Master Stateroom	12
Owner's Office	13
Master Bathroom	13
Guest Stateroom	13
Guest Bathroom	13
Guest Stateroom	13
Twin Guest Stateroom	13
Twin Guest Stateroom	14
Sun Deck	14
Sun Deck	14
Sun Deck	14
Upper Aft Deck	14
Upper Aft Deck Dining	14
Upper Aft Deck	15
Upper Aft Deck	15
Tri Deck	15
Layout	15
CONTACTS	16
Contact details	16
Telephones	16
Office hours	16
Address	16

SPECIFICATIONS

Basic Information

Category: Motor Yacht

Sub Category: Tri-Deck

Model Year: 2002

Year Built: 2002

Country: United States

Vessel Top: Enclosed P.H. W/Sundeck

Fly Bridge: Yes

Dimensions

LOA: 146' 0" (44.50m)

Beam: 28' 0" (8.53m)

Max Draft: 9' 0" (2.74m)

Speed, Capacities and Weight

Cruise Speed: 12 Kts. (14 MPH)

Max Speed: 16 Kts. (18 MPH)

Displacement: 313 Pounds

Gross Tonnage: 447 Pounds

Water Capacity: 2641 Gallons

Fuel Capacity: 13340 Gallons

Accommodations

Total Cabins: 5

Total Berths: 10

Sleeps: 10

Total Heads: 5

Captain Cabin: True

Crew Cabin: 5

Crew Berths: 9

Crew Sleeps: 10

Crew Heads: 4

Hull and Deck Information

Hull Material: GRP

Hull Configuration: Full Displacement

Hull Designer: Zuretti

Exterior Designer: Intermarine

Interior Designer: Zuretti

Engine Information

Engines: 2

Manufacturer: Caterpillar

Model: 3508B

Fuel Type: Diesel

DETAILED INFORMATION

VESSEL WALKTHROUGH

As you board BALAJU, entry to the vessel is through automatic aft sliding doors into the main salon or through double hinged doors on the starboard side. From the aft moving forward, main salon decor is white limed oak, oat colored carpet, two marble-topped low tables, an oak burl table, two white sofas and three blue arm chairs. The salon leads to a dining area with a large, oval table with seating for 10-12 persons. The dining salon and the main salon can be divided with sliding doors and an electrically operated opaque screen. Above the dining table is a Lalique chandelier. The electrically operated service door slides to the main pantry on the port side and an entrance forward to the owner's suite is on the starboard side. Upon entering the owner's suite you pass through the study area with leather-topped table, two classic chairs and marble-topped wall unit, double sofa and ottoman. The owner's cabin features a king-size bed, marble-topped tables and flat screen T.V. Adjoining the suite is the owner's walk-in dressing area and bathroom which is marble throughout. Guest cabins are situated amidships. Forward of the engine room are four symmetrically arranged guest cabins; two twin cabins and two double cabins, each with ensuite marble bath. The skylounge is situated aft on the bridge deck. The spacious, light salon features a retractable large T.V., marble/leather bar, a fixed sofa on the starboard side, two low tables and one game table. The aft sliding door leads to the large dining table on the bridge aft deck. Forward of the sky lounge is an upper pantry and service area with a dumb waiter. Forward of the sky lounge is a second day head. Port side of the bridge deck aft is a solarium lounge.

Huge Sundeck with Fixed and Loose Seating, Mast Arch with TV, Cooking area and Barbecue, 1900 liter Jacuzzi Hot Tub, Large Sunpad area, Nordic Track Elliptical and Stationary Bicycle Exercise Machines. Throughout BALAJU the theme of limed oak, beige leather and fabrics contrasted with burl veneer and white marble is continued. The yacht features brand new carpet throughout and an updated audio visual package. Large windows and glass doors ensure a light and spacious feeling.

ENTERTAINMENT EQUIPMENT

- New A/V System Throughout Yacht in 2015.
- KVH HD-11 Full HD Satellite Antenna with Universal LNB for US, Caribbean, and European Satellite Reception
- 11 Satellite Receivers for each region – DirectTV US & Caribbean, Sky TV Europe
- Synology Disk Station Movie Server with Movies, TV Series, Music Library and Guest provided Music and Video distributed to all staterooms on demand
- RTI Integrated Remote Control System with iPad for each zone to control all Music and Video

Sources

- 11 Zone Sonos Music Distribution System
- 9 Samsung HD-LED TV
 - 1- Main Salon 60"
 - 1- Owner Staterooms 55"
 - 1- Sky Lounge 46"
 - 4- Guest Staterooms 32"
 - 2- Captain Cabin and Crew Mess 32"
- 2 SunBrite HD-LED TV 46" on Bridge Deck and Sun Deck
- 11 Entertainment Zones with Marantz Surround Sound Receivers, Satellite Receivers, Sony BluRay disk Players, ROKU digital content interface, SONOS, and iPad controller
- Full Vessel Wi-Fi coverage with 4 Access Points and Internet at all ties from Cellular, V-Sat or Shore Line as available.

GALLEY & LAUNDRY EQUIPMENT

- One Lainox direct steam combination oven
- One Berner professional induction cook top
- One Miele oven
- One Hobart full size dishwasher
- One Miele professional dishwasher
- Two Miele professional WS 5426 washing machines
- Two Miele professional T 5206 dryers
- Corian and stainless steel counter tops
- Two-door freezer with temperature alarm
- (3) refrigerators
- Extraction fans
- (2) Microwave ovens
- Convection oven

ELECTRICAL SYSTEM

- Two Northern Lights generators, 125 kW each Generator hours: stbd. 19,718 - port: 19,536 (as of Feb 2016)
- 380V 3-phase + 220V/110V single phase 380/220/24V ASEA shore power converters

- Main battery: 24V-400Ah
- Auxiliary battery: 24V-320Ah

MECHANICAL EQUIPMENT

- Two x 1300 hp Caterpillar 3508B diesels (970 kW 1835rpm)
- Engines hours: 12,450 (2/5/16)
- ZF BW 365 gearboxes
- Electro-hydraulic 2-ram steering
- Two Idromar reverse osmosis watermakers, 1,850 gallons per day
- Full A/C system throughout with individual temperature control
- Full makeup air system providing fresh replacement air to all spaces

ELECTRONICS

- Two Furuno Radars 21" high resolution screens
- One Furuno 3cm x-band scanner - model type FR 2105/21 05b series
- One Furuno 10cm x-band scanner - model type FR 2105/21 05b series
- One Furuno Depth Sounder VCV 58 1L
- Two Raymarine hybrid touch GPS w/mapping
- One AIS Saab unit linked via IBM netvista computer to a Philips 21" monitor
- One Transas electronic chart system linked via IBM computer to Philips monitor
- One C-Plath autopilot, gyro-compass main steering system: Navigat X MKI, Navipilot HSC/GM, Naviknot III FNF
- One C-Plath magnetic compass type 2795 AA
- One Skanti VHF 1000 radio
- One MF/HF TRP 1000 radio
- B & G HYDRA unit model 2000 - speed/depth/wind indicator
- Furuno Weatherfax unit FAX-207
- Furuno Navtex 5X500
- Satellite communications, Fleet 77 Nera, voice and data
- Satcom C telex, fax, e-mail

SAFETY AND FIRE PROTECTION

- Three Allen-Bradley panelview 1000 alarms monitoring and control system
- Four Lifebuoys and SOLAS approved
- Four RFD Inflatable Liferafts (16 people each) SOLAS approved plus one Zodiac 6-man Inflatable Liferaft
- Various flares, rockets, smoke canisters
- One SIANI electric board for navlights/illuminations and rudder control

- Two speedline 250 linethrowers
- Two ACR 406 MHz EPIRBs
- Once ACR Pathfinder SART
- One Autornica BS 100 fire detection system
- Thirty-six handheld/portable fire extinguishers (dry powder, AFFF, C02), 3kg, 6kg, 9kg
- Two fire blankets
- Thirty Velerio S. Giorgio Aquarle Mk3 adult lifejackets
- Six Velerio S. Giorgio Aquarel Mk3 lifejackets
- Four Falcon 275N auto twin chamber SOLAS inflatable lifejackets
- One fixed Cassiano 45kg C02 FM 200/C02 fire fighting system
- Two fire fighting suits with Ba-Sets, tanks, boots, gloves and other accessories
- One Trolley fire extinguisher AFFF 50kg
- Two full sets of fire fighting equipment (Drager)
- Emergency exit to the foredeck via removable panel in owner's shower
- Emergency exit to the foredeck from crews quarters

Throughout the vessel are 70 smoke/heat fire alarm detectors and manual call points. These are linked to a main fire Autronica detection system on the bridge.

DECK EQUIPMENT

- Teak decking
- Two Motomar cranes
- Two capstans
- Two aft winches
- One Motomar hydraulic/electric gangway
- Teak swim platform
- Teak bow and stern
- C02 fire locker
- BA equipped fire locker
- Bosun's locker
- Crew tender
- Two emergency fire/bilge pumps
- Air handling units
- Escape hatches for crew and owner

TENDERS & TOYS

- One Novamarine HD 450 Jet Tug tender with 115hp Yanmar diesel inboard engine and Castoldi Jet drive
- One Novamarine HD 5 Jet Tug tender with 115hp Yanmar diesel inboard engine and Castoldi Jet drive

- Four 50 liter dive cylinders, one Brownies compressor
- One Jacuzzi Whirlpool 1900 liters
- Various wetsuits, BCDs, fins, masks, snorkels, etc.
- Two sets waterskis
- Two bicycles
- Inflatable Jungle Joe Waterpark w/slide, inflatable trampoline, 2 towable inflatables, 2 wakeboards

REMARKS

NOT FOR SALE OR CHARTER TO US RESIDENTS WHILE IN US WATERS

Exclusions

Owner's personal belongings.

Disclaimer

The Company offers the details of this vessel or yacht in good faith but cannot guarantee or warrant the accuracy of this information nor warrant the condition of the vessel. A buyer should instruct his representatives, agents, or his surveyors, to investigate such details as the buyer desires validated. This vessel or yacht is offered subject to prior sale, price change, or withdrawal without notice.

PHOTOS

Profile



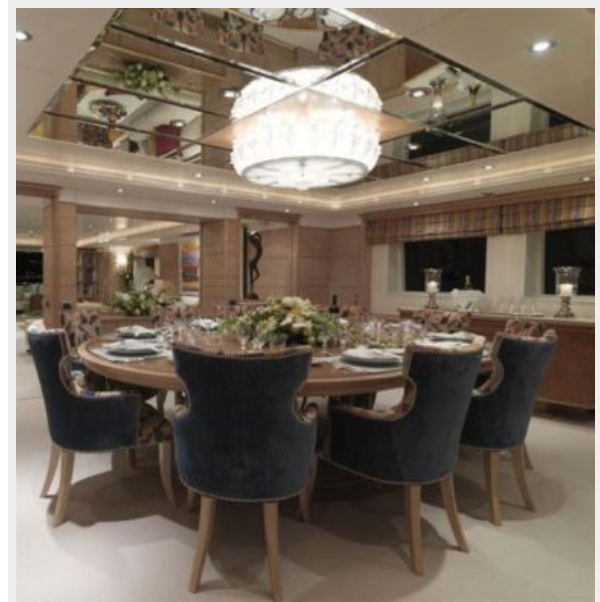
Main Salon



Main Salon



Dining Salon



Skylounge



Foyer



Master Stateroom



Master Stateroom



Master Stateroom



Owner's Suite Sofa



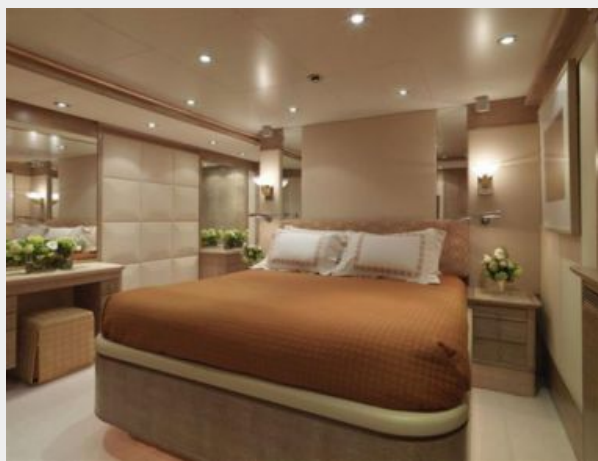
Owner's Office



Master Bathroom



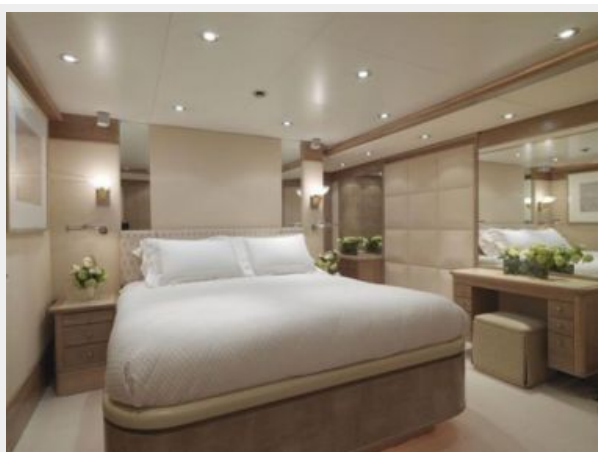
Guest Stateroom



Guest Bathroom



Guest Stateroom



Twin Guest Stateroom



Twin Guest Stateroom



Sun Deck



Sun Deck



Sun Deck



Upper Aft Deck



Upper Aft Deck Dining



Upper Aft Deck



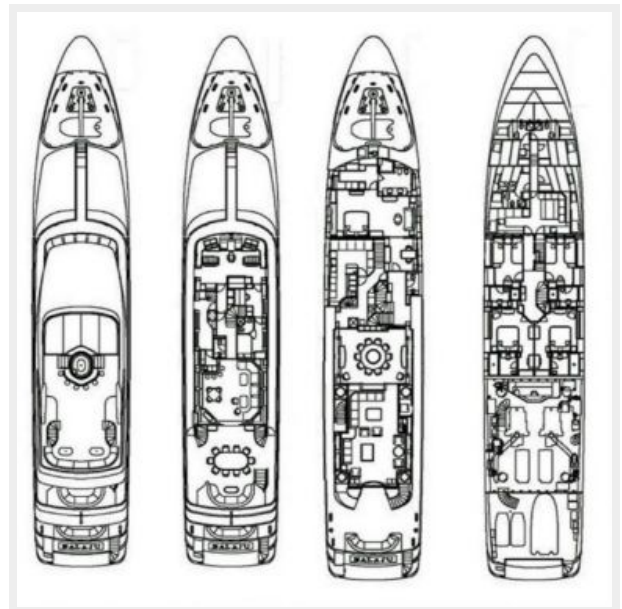
Upper Aft Deck



Tri Deck



Layout



CONTACTS

Andrey Shestakov, leading yacht broker of the sales department of Shestakov Yacht Sales Inc. Shestakov Yacht Sales Inc., the official representative of the Miami/Fort Lauderdale FL headquarters.

Contact details

Email: andrey@shestakovyachtsales.com

Web: shestakovyachtsales.com/en/

Telephones

USA: +1(954)274-4435

Office hours

Monday – Saturday: **9:00 - 21:00** EDT

Sunday: **closed**

Address



Harbour Towne Marina, 850 NE 3rd St,
STE 213, Dania, FL 33004