

## BALAJU — INTERMARINE



**Судостроитель:** INTERMARINE

**Год постройки:** 2002

**Модель:** Моторная яхта

**Цена:** **ЦЕНА ЯХТЫ ПО ЗАПРОСУ**

**Местонахождение:** United States

**Длина общая:** 146' 0" (44.50m)

**Ширина:** 28' 0" (8.53m)

**Макс. осадка:** 9' 0" (2.74m)

**Крейс. скорость:** 12 Kts. (14 MPH)

**Макс. скорость:** 16 Kts. (18 MPH)

Купить **BALAJU — INTERMARINE** а также выбрать подходящую вам яхту из нашего каталога яхт вам поможет опытный яхтенный брокер Андрей Шестаков. На сегодняшний день компания **Shestakov Yacht Sales Inc.** имеет большое количество яхт в собственном списке продаж, а также тесно сотрудничает со всеми крупными яхтенными производителями по всему миру.

Для того чтобы купить яхту **BALAJU — INTERMARINE** а также проконсультироваться по любому вопросу связанному с покупкой, продажей, чартером яхт позвоните по телефону **+7(918)465-66-44**.

# ОГЛАВЛЕНИЕ

ОГЛАВЛЕНИЕ	2
ХАРАКТЕРИСТИКИ	4
Основная информация	4
Размеры	4
Скорость, вместимость и масса	4
Размещение	4
Корпус и палуба	5
Информация о двигателе	5
ПОДРОБНОЕ ОПИСАНИЕ	6
VESSEL WALKTHROUGH	6
ENTERTAINMENT EQUIPMENT	6
GALLEY & LAUNDRY EQUIPMENT	7
ELECTRICAL SYSTEM	7
MECHANICAL EQUIPMENT	8
ELECTRONICS	8
SAFETY AND FIRE PROTECTION	8
DECK EQUIPMENT	9
TENDERS & TOYS	9
REMARKS	10
Исключения	10
Отказ от ответственности	10
ФОТОГРАФИИ	11
Main Salon	11
Profile	11
Dining Salon	11
Main Salon	11
Skylounge	12
Foyer	12

---

Master Stateroom	12
Master Stateroom	12
Owner's Suite Sofa	12
Master Stateroom	12
Owner's Office	13
Master Bathroom	13
Guest Stateroom	13
Guest Bathroom	13
Guest Stateroom	13
Twin Guest Stateroom	13
Twin Guest Stateroom	14
Sun Deck	14
Sun Deck	14
Sun Deck	14
Upper Aft Deck	14
Upper Aft Deck Dining	14
Upper Aft Deck	15
Upper Aft Deck	15
Tri Deck	15
Layout	15
<b>КОНТАКТЫ</b>	<b>16</b>
Контактная информация	16
Телефоны	16
Время работы	16
Адрес	16

# ХАРАКТЕРИСТИКИ

## Основная информация

Тип судна: Моторная яхта

Подкатегория: Tri-Deck

Модельный год: 2002

Год постройки: 2002

Страна: United States

Верх: Enclosed P.H. W/Sundeck

Открытая палуба мостика: Да

## Размеры

Длина общая: 146' 0" (44.50m)

Ширина: 28' 0" (8.53m)

Макс. осадка: 9' 0" (2.74m)

## Скорость, вместимость и масса

Крейс. скорость: 12 Kts. (14 MPH)

Макс. скорость: 16 Kts. (18 MPH)

Водоизмещение: 313 Pounds

Чистый вес: 447 Pounds

Вместимость воды: 2641 Gallons

Объем топливного бака: 13340 Gallons

## Размещение

Всего кают: 5

Всего коек: 10

Спальные места: 10

Всего ком. состава: 5

Каюта капитана: Да

Каюты экипажа: 5

Койки экипажа: 9

Спальных мест экипажа: 10

Комм. состав экипажа: 4

## Корпус и палуба

---

**Материал корпуса:** GRP

**Комплектация корпуса:** Full  
Displacement

**Дизайнер корпуса:** Zuretti

**Дизайнер экстерьера:** Intermarine

**Дизайнер интерьера:** Zuretti

## Информация о двигателе

---

**Двигатели:** 2

**Производитель:** Caterpillar

**Модель:** 3508B

**Тип топлива:** Diesel

---

# ПОДРОБНОЕ ОПИСАНИЕ

---

## VESSEL WALKTHROUGH

---

As you board BALAJU, entry to the vessel is through automatic aft sliding doors into the main salon or through double hinged doors on the starboard side. From the aft moving forward, main salon decor is white limed oak, oat colored carpet, two marble-topped low tables, an oak burl table, two white sofas and three blue arm chairs. The salon leads to a dining area with a large, oval table with seating for 10-12 persons. The dining salon and the main salon can be divided with sliding doors and an electrically operated opaque screen. Above the dining table is a Lalique chandelier. The electrically operated service door slides to the main pantry on the port side and an entrance forward to the owner's suite is on the starboard side. Upon entering the owner's suite you pass through the study area with leather-topped table, two classic chairs and marble-topped wall unit, double sofa and ottoman. The owner's cabin features a king-size bed, marble-topped tables and flat screen T.V. Adjoining the suite is the owner's walk-in dressing area and bathroom which is marble throughout. Guest cabins are situated amidships. Forward of the engine room are four symmetrically arranged guest cabins; two twin cabins and two double cabins, each with ensuite marble bath. The skylounge is situated aft on the bridge deck. The spacious, light salon features a retractable large T.V., marble/leather bar, a fixed sofa on the starboard side, two low tables and one game table. The aft sliding door leads to the large dining table on the bridge aft deck. Forward of the sky lounge is an upper pantry and service area with a dumb waiter. Forward of the sky lounge is a second day head. Port side of the bridge deck aft is a solarium lounge.

Huge Sundeck with Fixed and Loose Seating, Mast Arch with TV, Cooking area and Barbecue, 1900 liter Jacuzzi Hot Tub, Large Sunpad area, Nordic Track Elliptical and Stationary Bicycle Exercise Machines. Throughout BALAJU the theme of limed oak, beige leather and fabrics contrasted with burl veneer and white marble is continued. The yacht features brand new carpet throughout and an updated audio visual package. Large windows and glass doors ensure a light and spacious feeling.

---

## ENTERTAINMENT EQUIPMENT

---

- New A/V System Throughout Yacht in 2015.
- KVH HD-11 Full HD Satellite Antenna with Universal LNB for US, Caribbean, and European Satellite Reception
- 11 Satellite Receivers for each region – DirectTV US & Caribbean, Sky TV Europe
- Synology Disk Station Movie Server with Movies, TV Series, Music Library and Guest provided Music and Video distributed to all staterooms on demand
- RTI Integrated Remote Control System with iPad for each zone to control all Music and Video

## Sources

- 11 Zone Sonos Music Distribution System
- 9 Samsung HD-LED TV
  - 1- Main Salon 60”
  - 1- Owner Staterooms 55”
  - 1- Sky Lounge 46”
  - 4- Guest Staterooms 32”
  - 2- Captain Cabin and Crew Mess 32”
- 2 SunBrite HD-LED TV 46” on Bridge Deck and Sun Deck
- 11 Entertainment Zones with Marantz Surround Sound Receivers, Satellite Receivers, Sony BluRay disk Players, ROKU digital content interface, SONOS, and iPad controller
- Full Vessel Wi-Fi coverage with 4 Access Points and Internet at all ties from Cellular, V-Sat or Shore Line as available.

## GALLEY & LAUNDRY EQUIPMENT

---

- One Lainox direct steam combination oven
- One Berner professional induction cook top
- One Miele oven
- One Hobart full size dishwasher
- One Miele professional dishwasher
- Two Miele professional WS 5426 washing machines
- Two Miele professional T 5206 dryers
- Corian and stainless steel counter tops
- Two-door freezer with temperature alarm
- (3) refrigerators
- Extraction fans
- (2) Microwave ovens
- Convection oven

## ELECTRICAL SYSTEM

---

- Two Northern Lights generators, 125 kW each Generator hours: stbd. 19,718 - port: 19,536 (as of Feb 2016)
- 380V 3-phase + 220V/110V single phase 380/220/24V ASEA shore power converters

- Main battery: 24V-400Ah
- Auxiliary battery: 24V-320Ah

## MECHANICAL EQUIPMENT

---

- Two x 1300 hp Caterpillar 3508B diesels (970 kW 1835rpm)
- Engines hours: 12,450 (2/5/16)
- ZF BW 365 gearboxes
- Electro-hydraulic 2-ram steering
- Two Idromar reverse osmosis watermakers, 1,850 gallons per day
- Full A/C system throughout with individual temperature control
- Full makeup air system providing fresh replacement air to all spaces

## ELECTRONICS

---

- Two Furuno Radars 21" high resolution screens
- One Furuno 3cm x-band scanner - model type FR 2105/21 05b series
- One Furuno 10cm x-band scanner - model type FR 2105/21 05b series
- One Furuno Depth Sounder VCV 58 1L
- Two Raymarine hybrid touch GPS w/mapping
- One AIS Saab unit linked via IBM netvista computer to a Philips 21" monitor
- One Transas electronic chart system linked via IBM computer to Philips monitor
- One C-Plath autopilot, gyro-compass main steering system: Navigat X MKI, Navipilot HSC/GM, Naviknot III FNF
- One C-Plath magnetic compass type 2795 AA
- One Skanti VHF 1000 radio
- One MF/HF TRP 1000 radio
- B & G HYDRA unit model 2000 - speed/depth/wind indicator
- Furuno Weatherfax unit FAX-207
- Furuno Navtex 5X500
- Satellite communications, Fleet 77 Nera, voice and data
- Satcom C telex, fax, e-mail

## SAFETY AND FIRE PROTECTION

---

- Three Allen-Bradley panelview 1000 alarms monitoring and control system
- Four Lifebuoys and SOLAS approved
- Four RFD Inflatable Liferafts (16 people each) SOLAS approved plus one Zodiac 6-man Inflatable Liferaft
- Various flares, rockets, smoke canisters
- One SIANI electric board for navlights/illuminations and rudder control



- Two speedline 250 linethrowers
- Two ACR 406 MHz EPIRBs
- Once ACR Pathfinder SART
- One Autornica BS 100 fire detection system
- Thirty-six handheld/portable fire extinguishers (dry powder, AFFF, C02), 3kg, 6kg, 9kg
- Two fire blankets
- Thirty Velerio S. Giorgio Aquarle Mk3 adult lifejackets
- Six Velerio S. Giorgio Aquarel Mk3 lifejackets
- Four Falcon 275N auto twin chamber SOLAS inflatable lifejackets
- One fixed Cassiano 45kg C02 FM 200/C02 fire fighting system
- Two fire fighting suits with Ba-Sets, tanks, boots, gloves and other accessories
- One Trolley fire extinguisher AFFF 50kg
- Two full sets of fire fighting equipment (Drager)
- Emergency exit to the foredeck via removable panel in owner's shower
- Emergency exit to the foredeck from crews quarters

Throughout the vessel are 70 smoke/heat fire alarm detectors and manual call points. These are linked to a main fire Autronica detection system on the bridge.

## DECK EQUIPMENT

---

- Teak decking
- Two Motomar cranes
- Two capstans
- Two aft winches
- One Motomar hydraulic/electric gangway
- Teak swim platform
- Teak bow and stern
- C02 fire locker
- BA equipped fire locker
- Bosun's locker
- Crew tender
- Two emergency fire/bilge pumps
- Air handling units
- Escape hatches for crew and owner

## TENDERS & TOYS

---

- One Novamarine HD 450 Jet Tug tender with 115hp Yanmar diesel inboard engine and Castoldi Jet drive
- One Novamarine HD 5 Jet Tug tender with 115hp Yanmar diesel inboard engine and Castoldi Jet drive

- Four 50 liter dive cylinders, one Brownies compressor
- One Jacuzzi Whirlpool 1900 liters
- Various wetsuits, BCDs, fins, masks, snorkels, etc.
- Two sets waterskis
- Two bicycles
- Inflatable Jungle Joe Waterpark w/slide, inflatable trampoline, 2 towable inflatables, 2 wakeboards

## REMARKS

---

NOT FOR SALE OR CHARTER TO US RESIDENTS WHILE IN US WATERS

## Исключения

---

При продаже яхты исключаются личные вещи владельца.

## Отказ от ответственности

---

Компания предоставляет описание судна или яхты добросовестно, но не может гарантировать точность этой информации, а также не ручается за техническое состояние. Покупатель должен проинструктировать своих агентов или оценщиков исследовать представленную информацию более подробно, по собственному желанию. Продажа судна или яхты, изменение цены или снятие с продажи будет происходить без предварительного уведомления.

# ФОТОГРАФИИ

**Profile**



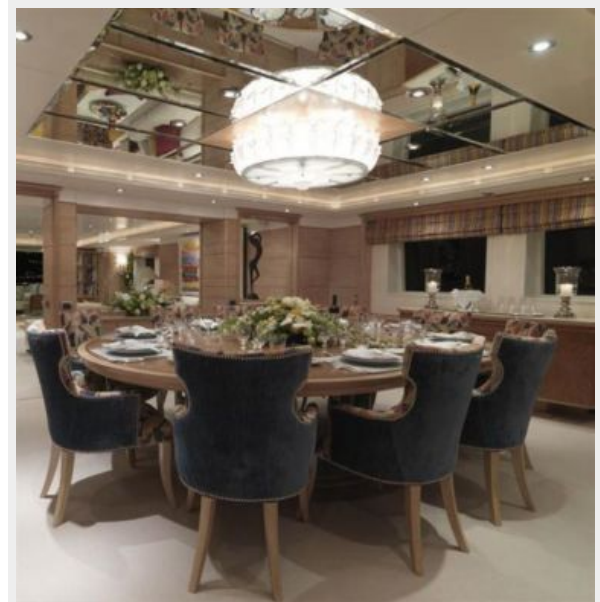
**Main Salon**



**Main Salon**



**Dining Salon**



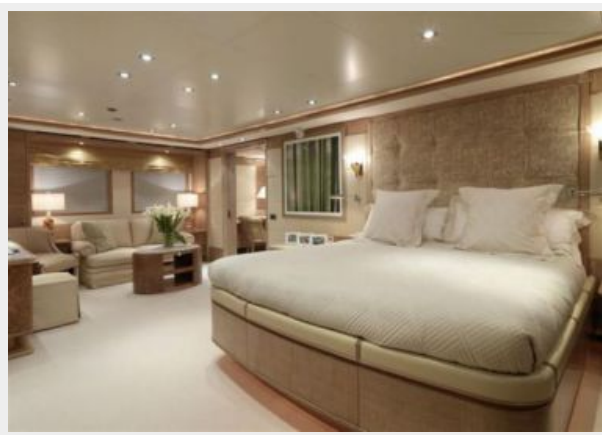
**Skylounge**



**Foyer**



**Master Stateroom**



**Master Stateroom**



**Master Stateroom**



**Owner's Suite Sofa**



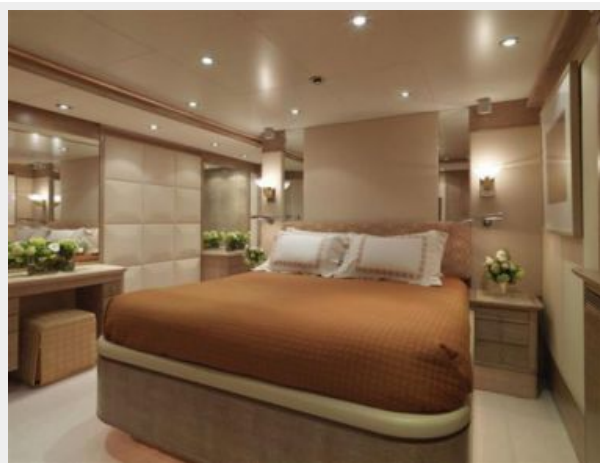
**Owner's Office**



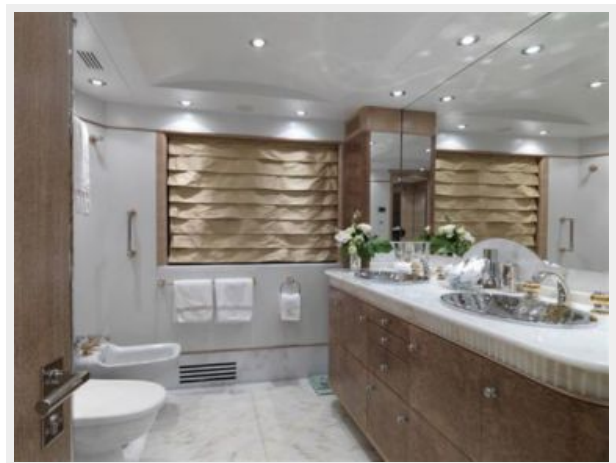
**Master Bathroom**



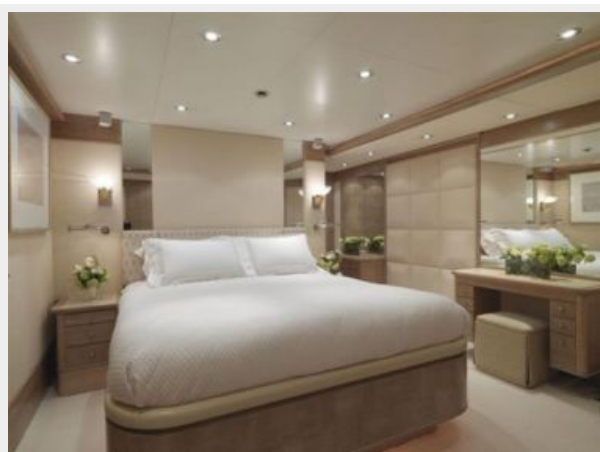
**Guest Stateroom**



**Guest Bathroom**



**Guest Stateroom**



**Twin Guest Stateroom**



**Twin Guest Stateroom**



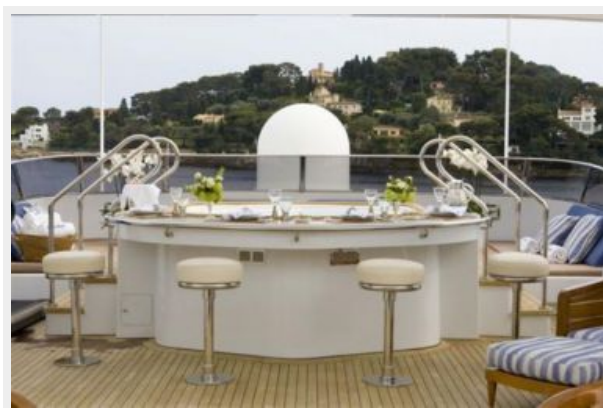
**Sun Deck**



**Sun Deck**



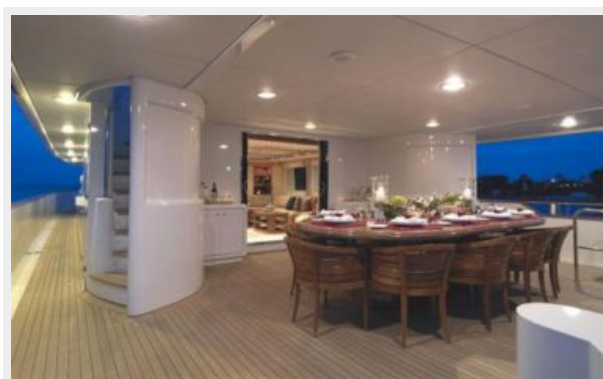
**Sun Deck**



**Upper Aft Deck**



**Upper Aft Deck Dining**



### Upper Aft Deck



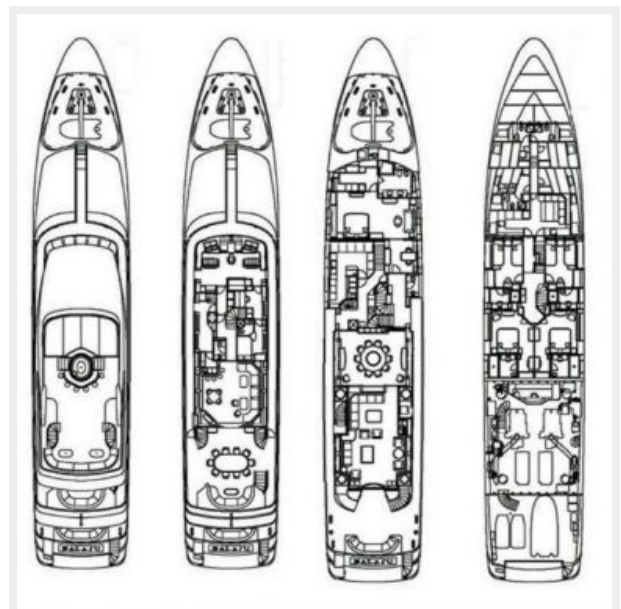
### Upper Aft Deck



### Tri Deck



### Layout



# КОНТАКТЫ

---

Андрей Шестаков (Andrey Shestakov) – ведущий яхтенный брокер отдела продаж яхт и судов компании Shestakov Yacht Sales Inc. Официальный представитель Shestakov Yacht Sales Inc. для русскоговорящих клиентов в центральном офисе компании в Майами/Форт Лодердейл/Флорида/США.

## Контактная информация

---

Email: [andrey@shestakovyachtsales.com](mailto:andrey@shestakovyachtsales.com)

Web: [shestakovyachtsales.com](http://shestakovyachtsales.com)

## Телефоны

---

Краснодарский край: **+7(918)465-66-44**

США, Майами, Флорида: **+1(954)274-4435**

## Время работы

---

Понедельник – Суббота: **9:00 - 21:00**  
EDT

Воскресенье: **Закрито**

## Адрес

---



Harbour Towne Marina, 850 NE 3rd St,  
STE 213, Dania, FL 33004