

ZEUS — VIKING



Судостроитель: VIKING

Год постройки: 2012

Модель: Катер для спортивной рыбалки

Цена: **ЦЕНА ЯХТЫ ПО ЗАПРОСУ**

Местонахождение: United States

Длина общая: 76' 0" (23.16m)

Ширина: 20' 3" (6.17m)

Макс. осадка: 5' 6" (1.68m)

Крейс. скорость: 36 Kts. (41 MPH)

Макс. скорость: 40 Kts. (46 MPH)

Купить Zeus — VIKING а также выбрать подходящую вам яхту из нашего каталога яхт вам поможет опытный яхтенный брокер Андрей Шестаков. На сегодняшний день компания Shestakov Yacht Sales Inc. имеет большое количество яхт в собственном списке продаж, а также тесно сотрудничает со всеми крупными яхтенными производителями по всему миру.

Для того чтобы купить яхту Zeus — VIKING а также проконсультироваться по любому вопросу связанному с покупкой, продажей, чартером яхт позвоните по телефону **+7(918)465-66-44**.

ОГЛАВЛЕНИЕ

ОГЛАВЛЕНИЕ	2
ХАРАКТЕРИСТИКИ	6
Обзор	6
Основная информация	6
Размеры	6
Скорость, вместимость и масса	6
Размещение	6
Корпус и палуба	7
Информация о двигателе	7
ПОДРОБНОЕ ОПИСАНИЕ	8
Vessel Walkthrough	8
Layout and Decor	8
Salon	8
Galley/Dinette	9
Companionway	9
Master Stateroom	10
Master Stateroom Head	10
Forward Stateroom	10
Forward Stateroom Head	10
Starboard Stateroom	11
Starboard Head	11
Port Stateroom	11
Port Head	11
Flybridge	12
Deck/Exterior	12
Deck and Hull	12
Cockpit	12
Engine Room/Mechanical	13

Palm Beach Tower	13
Atlantic Marine Electronics Package	14
Owner Exclusions	16
Исключения	16
Отказ от ответственности	16
ФОТОГРАФИИ	17
Salon	17
Galley	17
Master Stateroom	17
Helm	17
Dinette	17
Salon/Galley	17
Dinette	18
Salon/Galley	18
Galley	18
Galley	18
Galley	18
Galley	18
Glassware storage	19
Dinnerware storage	19
Audio/Visual	19
Audio/Visual	19
Audio/Visual	20
Audio/Visual	20
Day Head	20
Audio/Visual	20
Master Stateroom	21
Master Stateroom	21
Master Stateroom/Vanity	21

Master Stateroom	21
Master Closet	22
Master Stateroom	22
Master Head	22
Master Head	22
Master Head	22
Master Head	22
Master Shower	23
Master Shower	23
Port Stateroom	23
Port Stateroom	23
Port Stateroom	24
VIP Stateroom	24
Port Head	24
Port Head	24
Port Head	25
Forward Port Stateroom	25
Starboard Stateroom	25
Forward Port Stateroom	25
Starboard Head	26
Starboard Stateroom	26
Starboard Head	26
Starboard Head	26
Helm	27
Helm	27
Helm	27
Helm Night View	27
Engine Room	29
Engine Room	30

Starboard Engine	30
Port Engine	30
Engine Room	30
Port Engine	30
Engine Room	30
Port Generator	31
Port	31
Starboard Generator	31
Watermaker	32
Engine Room	33
Engine Room	33
Running Profile	34
Running Profile	34
КОНТАКТЫ	36
Контактная информация	36
Телефоны	36
Время работы	36
Адрес	36

ХАРАКТЕРИСТИКИ

Обзор

The 2012 76' Viking Convertible "Zeus" is fully rigged to fish, dive, and travel anywhere with a full tuna tower, fighting chair, on board dive compressor, and additional fuel capacity. She is also equipped with MTU 16V2000 M94 2600 HP engines with only 925 hours, a state of the art Atlantic Marine Electronics package, and teak deck. Call today to schedule your showing of this beautiful 76 Viking!

Основная информация

Тип судна: Катер для спортивной рыбалки

Подкатегория: Convertible

Модельный год: 2012

Год постройки: 2012

Страна: United States

Размеры

Длина общая: 76' 0" (23.16m)

Ширина: 20' 3" (6.17m)

Макс. осадка: 5' 6" (1.68m)

Скорость, вместимость и масса

Крейс. скорость: 36 Kts. (41 MPH)

Макс. скорость: 40 Kts. (46 MPH)

Дальность на макс. скорости: 488 Kts.

Вместимость воды: 425 Gallons

Вместимость сточного бака: 257 Gallons

Объем топливного бака: 2880 Gallons

Размещение

Всего кают: 5

Всего ком. состава: 5

Корпус и палуба

Материал корпуса: Fiberglass

Информация о двигателе

Двигатели: 2

Производитель: MTU

Модель: 16V2000 M94

Тип двигателя: Inboard

Тип топлива: Diesel

ПОДРОБНОЕ ОПИСАНИЕ

Vessel Walkthrough

The expansive salon is entered through an electric sliding door and features a day head located immediately to port. To starboard, the leather L-shaped sofa offers rod or tackle storage beneath. A pop up television rises on an electric lift from the cabinet below. The granite-topped island in the galley proves very functional allowing you to enter from either side. The bar stools and the dinette accommodate family and guests with ample room.

Below, the full-beam master suite with king-size bed, upholstered headboard, his and hers maple-lined hanging lockers, and flat screen television lets comfort surround you. Fixed port and starboard portlights add natural light during the daytime, while they can be closed at night for privacy.

Three additional staterooms accommodate family and guests with a queen centered VIP forward with ensuite head. Two staterooms to port with a shared head; one with two bunks and one with a double berth. Another bunk stateroom is located to starboard with a private head.

The 206 square-foot cockpit gives you all the room you need to move around the fighting chair. “Zeus” is also equipped for SCUBA diving with an onboard air compressor to fill dive tanks. The mezzanine keeps necessities like a bait freezer, tackle, and a step box cooler close at hand. The flying bridge overhang provides shade for the mezzanine. The cockpit features drop-in fish boxes, transom live well, a transom door, under gunwale gaff stowage, and both fresh and raw-water washdown systems.

Layout and Decor

- 5 stateroom, 4 head layout
- Gloss finish throughout
- Wrapped hatch carpet
- Custom wallpaper
- Custom headliner material throughout
- Satin nickel interior light trim throughout
- LED interior lights throughout
- Brushed nickel interior hardware throughout
- Brushed nickel coverplates for switches and receptacles throughout
- Wood trim for heads
- Custom toss pillows

Salon

- Upgraded sofa - Ultraleather Mocassin "Dewberry Style" with top stitching
- Upgraded Bose entertainment system
- Salon door with electric door opener
- Carpet runner, full, canvas
- Teak trim where Amtico floor meets carpet
- Teak strips in ceiling
- Cocktail table
- Dimmers for quartz lights
- Teak wire box
- Dinette dimmers on overhead low voltage AC lights
- Custom Amtico flooring at salon entranceway
- Teak valances
- 55" flat screen TV

Day Head:

- Custom wallpaper
- Custom Amtico flooring
- Brushed nickel towel bars and rings
- Granite vanity top

Galley/Dinette

- Custom Amtico flooring
- Trash compactor
- 110V outlet next to switch on bottom of upper cabinet above sink
- Chrome faucet
- Stainless steel sink undermount
- 4 burner surface mount range
- Amtico flooring
- Full height backsplash in Neptune Bordeaux granite
- Granite countertop
- Teak dinette table

Companionway

- Canvas carpet runner with step covers
- Teak strips in wall panels
- Central Vacuum
- Stackable washer and dryer behind teak door

Master Stateroom

- Upgraded king mattress
- Full height headboard
- Teak strips in ceiling
- Additional telephone outlet
- Custom wallpaper
- Teak end table tops
- 40" flat panel TV

Master Stateroom Head

- Granite vanity top
- Mirror ceiling
- Teak face on lower vanity
- Custom wallpaper
- Custom Amtico flooring
- Chrome shower door hardware for frameless shower door
- Satin nickel shower fixtures
- Brushed nickel towel bars and rings
- Satin nickel faucet

Forward Stateroom

- Island queen bunk forward
- Custom wallpaper
- 26" flat screen TV

Forward Stateroom Head

- Mirror ceiling
- Teak face on lower vanity
- Mirror around upper vanity insert
- Custom wallpaper
- Custom Amtico flooring
- Brushed aluminum shower door
- Satin nickel shower fixtures
- Brushed nickel towel bars and rings
- Satin nickel faucet
- Granite vanity top

Starboard Stateroom

- Custom wallpaper
- Upgraded mattresses for both bunks
- Dimmer on overhead low-voltage AC lights
- Teak locker
- 19" flat screen TV

Starboard Head

- Mirror ceiling
- Custom wallpaper
- Mirror around upper vanity insert
- Teak face on lower vanity
- Custom Amtico flooring
- Chrome shower door
- Satin nickel shower fixtures
- Brushed nickel towel bars and rings
- Satin nickel faucet
- Granite vanity

Port Stateroom

- Custom wallpaper
- Upgraded mattresses for both bunks
- Custom headboard
- Teak locker storage
- 19" flat screen TV

Port Head

- Custom wallpaper
- Custom Amtico flooring
- Mirror ceiling
- Teak face on lower vanity
- Chrome shower door
- Satin nickel shower fixtures
- Brushed nickel towel bars and rings
- Satin nickel faucet
- Granite vanity top

Flybridge

- Single lever controls for pod
- Electronic trolling valves
- Push button catches for electronics boxes
- VHF Radio ICOM-604
- Dedicated batteries for electronics
- Teak helm pod
- (3) Bridge helm chairs
- Single lever control handles with bow thruster buttons
- MTU bridge controls system 2000 series engines

Deck/Exterior

- Fresh water washdown at bow inside anchor locker
- Trim tab covers
- Stainless steel gas springs for anchor locker hatch
- Salon forward window mask
- Side mounted handrails that follow top of salon window
- Mezzanine seating
- Custom Sunpad on bow
- Dive compressor to fill SCUBA tanks

Deck and Hull

- Additional fuel tank forward for a total of (3) tanks
- Fiberglass side thru-hulls
- Headhunter head system
- Prop pockets to reduce draft
- Hydraulic bow thruster
- Awlgrip forward bilge and anchor locker
- Awlgrip anchor locker
- Bow cleats fore and aft
- Rub rail painted white
- Bottom paint Viking Blue
- Custom non-metallic boot stripe

Cockpit

- Mezzanine cockpit
- Transom swim steps

- Crushed ice machine with discharge in port mezzanine box
- Awlgrip lazarette
- Y-valve for fresh and salt water washdowns
- Refrigerated cockpit step box
- Transom coaming with gate and with transom fish box
- Teak cockpit sole
- Storage lockers under port and starboard coamings
- Split lid for cockpit fish box
- Cruisair "cool breeze" mezzanine
- Transom livewell window

Engine Room/Mechanical

- Two generators (port-1140 starboard-1138)
- Awlgrip brass thru-hulls and sea strainers in engine room and forward bilges
- Fuel filters
- Headhunter fresh water pump
- 110V outlet on aft bulkhead at entranceway
- Clear acrylic shaft log access covers
- Gas-water separators for both generators
- Charles autophase C-power shore power transformer
- 1400 GPD watermaker with auto backflush
- Sea water manifold for livewell
- Deck fill for fresh water tank
- Pumps painted snow white
- Line from oil change system to cockpit dockside box
- Tee in dockside water manifold
- Magnetic switches for all bilge lights

Palm Beach Tower

- Full Tuna Tower
- Hardtop lights Tri-color (red, white, and blue)
- Top of control box painted black
- Control box cover
- Bow thruster control joystick in control box
- Tower sunshade
- Controls & Steering MDEC, SmartLine Controls for 2600 HP Electric steering unit
- 48' Rupp Outiggers
- Hydro rigger layout only w/ hydraulic locking system
- Center Rupp outrigger
- Wash down water in tower

- Recessed Electric Teaser Reels MIYA EPOCH US9 HD Heavy Duty 24V

Atlantic Marine Electronics Package

RADAR

- 1 Plotter FURUNO NAVNET 3D MFDBB Processor – VIEW NAVNET ON SALON TV
- 2 RADAR FURUNO NAVNET 3D DRS12A 12KW 72NM less array
- 1 RADAR ARRAY 6' FURUNO#XN13A/6
- 1 GPS ANTENNA FURUNO GP330B
- 2 MONITOR 17" LED GLASS BRIDGE MARINE KEP
- 1 GYRATION GO 2.4 WIRELESS MOUSE & KEYBOARD

PLOTTER

- 2 MONITOR 17" LED GLASS BRIDGE MARINE KEP VIEW CAMERA SWITCH, AND DSS RECEIVER
- 1 KEP COMPUTER SYSTEM 24VDC LEV-017
- 1 SOFTWARE, NOBELTEC TZ TRIDENT INCLUDES OPTIONS FOR RADAR AND SOUNDER INTEGRATION INTO NN3D
- 1 GYRATION GO 2.4 WIRELESS MOUSE & KYBD COMBO GP6105CKM

PLOTTER 2

- 1 DISPLAY MULTIFUNCTION NSE8 – SIMRAD AA010146, INCLUDES PRE-LOADED NAVIONICS CARTOGRAPHY

NAVNET PERIPHERALS

- 1 ETHERNET HUB FURUNO NAVNET 3D HUB101
- 4 PLOTTER NMEA CABLE, 1 X 6 PIN - CONNECTOR,5 METERS FURUNO#000-117-603
- 1 SATRADIO SIRIUS ANTENNA SHAKE SRA-40
- 1 WXWORX, WR-10 RECEIVER: USB CONNECT TO PC
- 1 AIS FURUNO FA50 BLACK BOX 12/24VDC

SOUNDER

1 FURUNO NAVNET 3D 1-3KW VIDEO SOUNDER MODULE

DIGITAL DEPTH/TEMP

DISPLAY REMOTE DATA DISPLAY FURUNO#RD30

AUTOPILOT

1 AUTOPILOT, GARMIN GHP 10V

VHF

2 VHF RADIO ICOM IC-M604 BLACK

STEREO

1 STEREO, W/IPOD DOCK FUSION MS-IP600

1 AMPLIFIER JL AUDIO 4 CHANNEL 100W M400/4

2 STEREO SPEAKER JL AUDIO M650-CCX-W - 2 PAIRS OF SPEAKERS FOR FB

SATCOM

1 PREWIRE FOR ADDITION OF KVH V3 SATELLITE COMMUNICATION SYSTEM

CAMERA

4 CAMERA MINI BALL WITH IR GOST PM-MINI

1 CAMERA SWITCHER COLOR QUAD WITH ZOOM APP

1 VIDEO DIST AMP MDA 5V COMPOSITE VIDEO - 1 X 5 WITH INPUT LOOP THRU, EXTRON

SATTV

1 SATELLITE TV KVH TRACVISION HD7

2 DSS RECEIVER DIRECTTV HR24 HD/DVR HR24 DVR RECEIVER FOR SALON AND MSR

4 DSS RECEIVER DIRECT TV HI-DEF H24 KVH 19

6 SATTV REMOTE CONTROL KIT RF FOR KVH HDTV

1 REMOTE CONTROL URC MX-5000

1 RF REMOTE SYSTEM, URC MSC400

1 IPOD DOCK, URC PSX-2

SAFETY

1 PREWIRE FOR ADDITION OF FLIR M-SERIES CAMERA

TOWER

1 VHF COMMAND MIC ICOM HM-162 B BLACK MOUNT INSIDE TOWER CONTROL BOX

2 VHF EXTENSION COMMAND MIC ICOM OPC-1541

1 DISPLAY, FURUNO RD33 DATA ORGANIZER

1 MOUNT RD30 PROMOUNT FUR-1

MISC

1 CARBON FIBER HELM PANEL OVERLAY

1 CARBON FIBER DROP DOWN BOX

1 BLACKED OUT HELM TREATMENT – PAINT INTERIOR OF RADIO BOXES FLAT BLACK

NET

4 OCEAN 3010FL-W OCEAN LED 12/24VDC – 4 LIGHTS OUT TRANSOM

Owner Exclusions

- (3) Sea Doos

Исключения

При продаже яхты исключаются личные вещи владельца.

Отказ от ответственности

Компания предоставляет описание судна или яхты добросовестно, но не может гарантировать точность этой информации, а также не ручается за техническое состояние. Покупатель должен проинструктировать своих агентов или оценщиков исследовать представленную информацию более подробно, по собственному желанию. Продажа судна или яхты, изменение цены или снятие с продажи будет происходить без предварительного уведомления.

ФОТОГРАФИИ

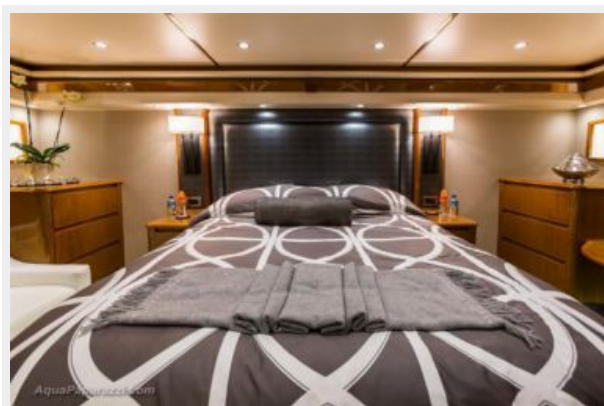
Salon



Galley



Master Stateroom



Helm



Dinette



Salon/Galley



Dinette



Salon/Galley



Galley



Galley



Galley



Galley



Glassware storage



Dinnerware storage



Audio/Visual



Audio/Visual



Audio/Visual



Audio/Visual



Audio/Visual



Day Head



Master Stateroom



Master Stateroom



Master Stateroom/Vanity

Master Stateroom



Master Stateroom



Master Closet



Master Head



Master Head



Master Head



Master Head



Master Shower



Master Shower



Port Stateroom



Port Stateroom



Port Stateroom



VIP Stateroom



Port Head

Port Head



Port Head



Forward Port Stateroom



Starboard Stateroom



Forward Port Stateroom



Starboard Stateroom



Starboard Head



Starboard Head

Starboard Head



Helm



Helm

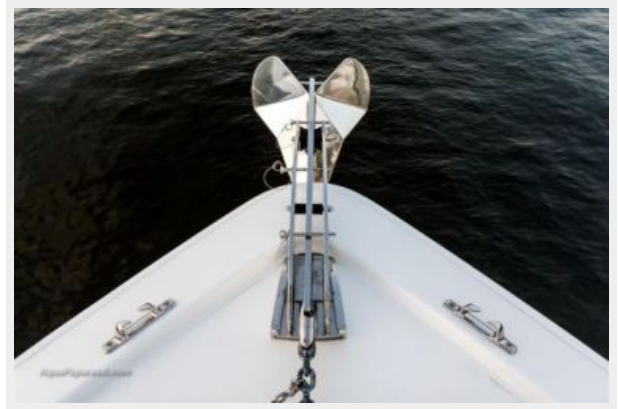


Helm



Helm Night View







Engine Room



Engine Room



Starboard Engine



Port Engine



Engine Room



Port Engine



Engine Room



Port Generator

Port



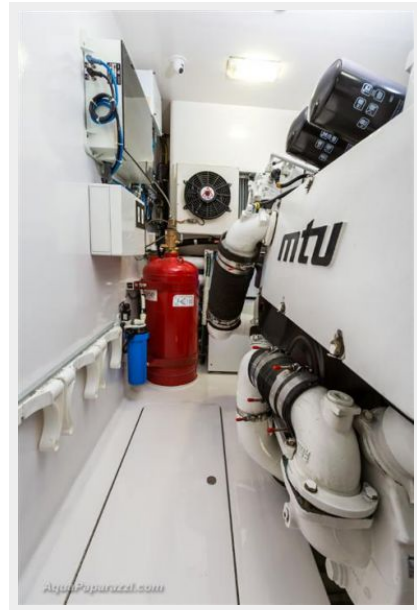
Starboard Generator





Watermaker





Engine Room



Engine Room



Running Profile



Running Profile





КОНТАКТЫ

Андрей Шестаков (Andrey Shestakov) – ведущий яхтенный брокер отдела продаж яхт и судов компании Shestakov Yacht Sales Inc. Официальный представитель Shestakov Yacht Sales Inc. для русскоговорящих клиентов в центральном офисе компании в Майами/Форт Лодердейл/Флорида/США.

Контактная информация

Email: andrey@shestakovyachtsales.com

Web: shestakovyachtsales.com

Телефоны

Краснодарский край: **+7(918)465-66-44**

США, Майами, Флорида: **+1(954)274-4435**

Время работы

Понедельник – Суббота: **9:00 - 21:00**
EDT

Воскресенье: **Закрето**

Адрес



Harbour Towne Marina, 850 NE 3rd St,
STE 213, Dania, FL 33004