

BONUS TIME — VIKING



Builder: VIKING

Year Built: 2009

Model: Sport Fisherman

Price: PRICE ON APPLICATION

Location: United States

LOA: 45' 0" (13.72m)

Beam: 16' 4" (4.98m)

Max Draft: 4' 6" (1.37m)

Cruise Speed: 30 Kts. (35 MPH)

Max Speed: 38 Kts. (44 MPH)

Our experienced yacht broker, Andrey Shestakov, will help you choose and buy a yacht that best suits your needs **Bonus Time — VIKING** from our catalogue. Presently, at Shestakov Yacht Sales Inc., we have a wide variety of yachts available on our sale's list. We also work in close contact with all the big yacht manufacturers from all over the world.

If you would like to buy a yacht **Bonus Time — VIKING** or would like help answering any questions concerning purchasing, selling or chartering a yacht, please call **+1(954)274-4435**

TABLE OF CONTENTS

TABLE OF CONTENTS	2
SPECIFICATIONS	4
Basic Information	4
Dimensions	4
Speed, Capacities and Weight	4
Accommodations	4
Hull and Deck Information	4
Engine Information	4
DETAILED INFORMATION	5
2009 45 Viking Express	5
Exclusions	12
Disclaimer	12
PHOTOS	13
Salon	13
Salon	13
Salon	13
Galley	13
Galley	13
Master Stateroom	13
Guest Stateroom	14
Head	14
Bridge	14
Bridge	14
Bridge	14
Bridge	14
Bridge	15
Cockpit	15
Cockpit	15

Cockpit	15
Release Fighting Chair	15
Engine Room	15
Engine Room	16
Engine Room	16
Teaser Reels	16
Tower	16
Tower	16
Tower	16
Stern	17
CONTACTS	18
Contact details	18
Telephones	18
Office hours	18
Address	18

SPECIFICATIONS

Basic Information

Category: Sport Fisherman	Model Year: 2009
Year Built: 2009	Country: United States

Dimensions

LOA: 45' 0" (13.72m)	Beam: 16' 4" (4.98m)
Max Draft: 4' 6" (1.37m)	

Speed, Capacities and Weight

Cruise Speed: 30 Kts. (35 MPH)	Max Speed: 38 Kts. (44 MPH)
Water Capacity: 150 Gallons	Fuel Capacity: 848 Gallons

Accommodations

Total Cabins: 2

Hull and Deck Information

Hull Material: Fiberglass

Engine Information

Engines: 2	Manufacturer: MAN
Model: CRM	Engine Type: Inboard
Fuel Type: Diesel	

DETAILED INFORMATION

2009 45 Viking Express

Vessel Walkthrough

The Viking 45 express features a large air conditioned helm deck area that offers unobstructed 360 degrees of visibility and plenty of seating.

A starboard located sliding door allows access into the cabin. Descending several steps there is a galley to starboard and a large L-Shape sofa to port. The first of two cabins is to port and has upper and lower bunks. The master is forward with an island style bed and private access to the single starboard head. Head entry can also be made by a door in the companionway.

The 119 square foot cockpit is sure to please any serious angler. In addition to space the functionality of the 45's cockpit with a tackle center, engine room access, in deck fish box and refrigerated step for drinks offers what many hope to find only in sixty foot boats.

Salon

CruisAir heating and air conditioning

Teak cocktail table

L-Shaped sofa with storage underneath (upgraded style)

Dimmer controlled recessed lighting

Sharp 15" LCD flat panel TV

Sony stereo with Sirius and DVD player (WMA AAC Marine)

Solid cherry tick Amtico flooring

Indirect lighting behind valances

Ships electric panel

Majilite headliner

Sliding salon door

Teak veneer finish

Recessed speakers in headliner

Galley

Rye corian counter tops

Undermount stainless sink (upgrade)

Removable sink wand

Removable cover for cook top with exhaust fan

Microwave/Convection oven

(2) Burner cook top with built in exhaust fan

Under counter refrigerator/freezer with custom ventilation to preserve units

Drawer and cabinet storage

Water tank gauge

Master Stateroom

Island double bed that lifts to reveal storage underneath

CruisAir heating and air conditioning

(2) Hanging lockers

Upgraded mattress

Head access

Reading lights

Indirect lighting

Carpeting

Drawer storage

15" Sharp flat panel TV

Recessed direct lighting

Overhead hatch

Stereo speakers that connect to the interior system

Guest Stateroom (Port)

Upper and lower bunks

Hanging locker

Upgraded mattresses

Storage under bottom bunk

Carpet

Recessed lighting

Overhead hatch

Stereo speakers that connect to the interior system

Head (starboard)

Entry from companionway or master stateroom

CruisAir heating and air conditioning

Brushed aluminum shower door

Vacu flush head

Stall shower

Exhaust fan

Mirror faced medicine cabinet

Solid cherry tick Amtico flooring

Linen storage

Automatic shower sump

Corian topped vanity with teak face and bone sink

Towel bar and ring

Overhead hatch

Helm

4 Sided enclosure, NEW 2014

Fiberglass pod with single lever controls

(3) Murray products teak ladder back chairs with customer added slides

Raised wraparound windshield

CruisAir heating and air conditioning

(3) Windshield wipers

Recessed electronics boxes

Rexroth controls

Recessed lighting in hardtop

Moritz monitoring system

Refrigerator/ice maker in starboard cabinet

Storage under bench seating

Palm Beach Towers hardtop and tower

Recessed teaser reel box with Miya Epoch 24 Volt teaser reels

Running lights recessed in hardtop

Manual engine shut down switches

VHF radios and switches in console radio box

Fire system control

Electronics and Navigational Equipment

Forward facing infrared

Furuno RD 30

(2) Icom 604 VHF radios

(3) Furuno MFD 12 12" NavNet 3D monitors

Furuno Blackbox radar model DRS 25, 96nm 25kw

Sirius weather system

Elbex EXC 1714 4mm camera system

Furuno autopilot

Ball camera

Navnet 3D AIS receiver

Camera plumbed into Nav Net monitor

AIS VHF antenna splitter

Cockpit

Release Marine fighting chair

Tackle center with drawers, bait prep, freezer, and engine room access

Additional shelf storage to starboard

Refrigerated cockpit step (separate unit from freezer to allow for efficient chilling)

In deck fish box with gas pistons for lids

In deck live well with gas piston for lid

Additional in deck box with gas piston for lid

Lazarette hatch

Cabinet for gaff and mop storage

Cabinet for dockside water connection, cablemaster and wash down system

(4) Flush mount rod holders (two swivel)

Transom door with lift gate

Indirect lighting

Stereo speakers

Tower release double spreader outriggers

Center rigger

(6) Rod aft rocket launcher aft hardtop

Cockpit freezer with its own unit to achieve maximum freeze temperatures

119 Square feet

(2) Clearing rod holders on the port and starboard tower legs

Port and Starboard 12V under gunnel outlets

Electrical System

Onan 17.5KW E-QD genset

(2) Charles battery chargers

Battery parallel

Glendenning cablemaster for shore power cable

AC/DC service

Smart boost voltage stabilizers

Battery boxes for batteries in engine room

Electrical control panel in salon

New batteries installed 2012

Engine and Mechanical

AC/DC lighting

Awlgrip finish

Racor fuel filters

“Delta T” engine room ventilation system

Engine room gauge package

Priming pumps (24 volt)

Power assist hydraulic steering

Trollilng valves

New batteries 2012

Additional Equipment

Dual AC/DC water pump systems

Head Hunter water pump 240 volt

Hot water heater

Bow pulpit with bow rail

(2) Fuel tanks

Molded buggy top in tower

Buell air horns

NavNet 8.4" 3D monitor in tower

Furuno RD 30 in the tower

Fresh water wash down inside anchor locker

Luxury edition interior package

(3) Bomar foredeck hatches

All bilge areas awlgrip finished

Engine package upgrade to V10 1100 CRM MAN engines

Underwater lights

Central Vac system

Anchor locker (bow)

Lewmar windlass

Backup fuel transfer pump

Rub rail painted to match gel coat

Crash pump

6 Man hard canister life raft

Remarks

"Bonus Time" is a well-equipped 45' Viking express that has enjoyed the pampering of a very knowledgeable owner. Many upgrades and custom features make her unlike any 45 built before or after her. You will not find a newer 45 being offered for sale today or one in better condition.

Exclusions

Owner's personal belongings.

Disclaimer

The Company offers the details of this vessel or yacht in good faith but cannot guarantee or warrant the accuracy of this information nor warrant the condition of the vessel. A buyer should instruct his representatives, agents, or his surveyors, to investigate such details as the buyer desires validated. This vessel or yacht is offered subject to prior sale, price change, or withdrawal without notice.

PHOTOS

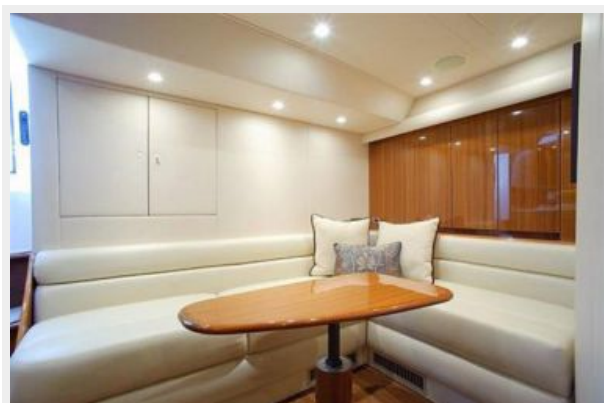
Salon



Salon



Salon



Galley



Galley



Master Stateroom



Guest Stateroom



Head



Bridge



Bridge



Bridge



Bridge



Bridge



Cockpit



Cockpit



Cockpit



Release Fighting Chair



Engine Room



Engine Room



Engine Room



Teaser Reels



Tower



Tower



Tower



Stern



CONTACTS

Andrey Shestakov, leading yacht broker of the sales department of Shestakov Yacht Sales Inc. Shestakov Yacht Sales Inc., the official representative of the Miami/Fort Lauderdale FL headquarters.

Contact details

Email:
andrey@shestakovyachtsales.com

Web: shestakovyachtsales.com/en/

Telephones

USA: **+1(954)274-4435**

Office hours

Monday – Saturday: **9:00 - 21:00 EDT**

Sunday: **closed**

Address



Harbour Towne Marina, 850 NE 3rd St,
STE 213, Dania, FL 33004