

## COCONUT — OFFSHORE



**Судостроитель:** OFFSHORE

**Год постройки:** 2001

**Модель:** Моторная яхта

**Цена:** **ЦЕНА ЯХТЫ ПО ЗАПРОСУ**

**Местонахождение:** United States

**Длина общая:** 62' 0" (18.90m)

**Ширина:** 16' 6" (5.03m)

**Макс. осадка:** 5' 0" (1.52m)

Купить **Coconut — OFFSHORE** а также выбрать подходящую вам яхту из нашего каталога яхт вам поможет опытный яхтенный брокер Андрей Шестаков. На сегодняшний день компания **Shestakov Yacht Sales Inc.** имеет большое количество яхт в собственном списке продаж, а также тесно сотрудничает со всеми крупными яхтенными производителями по всему миру.

Для того чтобы купить яхту **Coconut — OFFSHORE** а также проконсультироваться по любому вопросу связанному с покупкой, продажей, чартером яхт позвоните по телефону **+7(918)465-66-44**.

# ОГЛАВЛЕНИЕ

ОГЛАВЛЕНИЕ	2
ХАРАКТЕРИСТИКИ	5
Обзор	5
Основная информация	5
Размеры	5
Скорость, вместимость и масса	5
Размещение	5
Корпус и палуба	5
Информация о двигателе	6
ПОДРОБНОЕ ОПИСАНИЕ	7
Vessel Walkthrough	7
Исключения	12
Отказ от ответственности	12
ФОТОГРАФИИ	13
Cockpit	13
Cockpit	13
Cockpit	13
Cockpit	13
Cockpit	13
Salon	13
Salon	14
Salon	14
Salon	14
Salon	14
Galley	14
Galley	14
Galley	15
Galley	15

Galley	15
Master Head	15
Master Head	16
Master Head	16
Master Stateroom	16
Master Stateroom	16
Master Stateroom	16
Master Stateroom	16
Master Stateroom	17
VIP Head	17
VIP Stateroom	17
VIP Stateroom	17
VIP Stateroom	18
VIP Stateroom	18
Forward Stateroom	18
Forward Stateroom	18
Forward Stateroom	19
Forward Stateroom	19
Twin Guest Stateroom	19
Twin Guest Stateroom	19
Laundry	20
Pilothouse	20
Pilothouse	20
Pilothouse	20
Pilothouse	21
Pilothouse	21
Flybridge	21
Flybridge	21
Flybridge	21

---

Flybridge	21
Flybridge	22
Flybridge	22
Flybridge	22
Flybridge	22
Flybridge	22
Flybridge	22
Flybridge	23
Flybridge	23
Engine Room	23
Engine Room	23
Engine Room	23
Engine Room	23
Engine Room	24
Bow	24
Bow	24
Bow	24
Bow	24
Stern	24
<b>КОНТАКТЫ</b>	<b>26</b>
Контактная информация	26
Телефоны	26
Время работы	26
Адрес	26

# ХАРАКТЕРИСТИКИ

## Обзор

A beautifully maintained yacht with a very unique four (4) staterooms and three (3) heads layout. She has Caterpillar 800hp engines and an ABT hydraulic system consisting of (2) 25hp PTOs, a 38hp bow thruster and a 20hp stern thruster with power proportional controls at the three helm stations makes docking a joy. The flushdeck design allows for a fully level, no steps to the main deck and 6' 4" of height in engine room.

## Основная информация

**Тип судна:** Моторная яхта

**Модельный год:** 2001

**Год постройки:** 2001

**Страна:** United States

## Размеры

**Длина общая:** 62' 0" (18.90m)

**Ширина:** 16' 6" (5.03m)

**Макс. осадка:** 5' 0" (1.52m)

## Скорость, вместимость и масса

**Водоизмещение:** 76000 Pounds

**Вместимость воды:** 420 Gallons

**Вместимость сточного бака:** 100 Gallons **Объем топливного бака:** 1000 Gallons

## Размещение

**Всего кают:** 4

## Корпус и палуба

**Материал корпуса:** Fiberglass

## Информация о двигателе

---

**Двигатели:** 2

**Производитель:** Caterpillar

**Модель:** 3406E

**Тип двигателя:** Inboard

**Тип топлива:** Diesel

# ПОДРОБНОЕ ОПИСАНИЕ

## Vessel Walkthrough

A beautifully maintained yacht with a very unique four (4) staterooms and three (3) heads layout. She has Caterpillar 800hp engines and an ABT hydraulic system consisting of (2) 25hp PTOs, a 38hp bow thruster and a 20hp stern thruster with power proportional controls at the three helm stations makes docking a joy. The flushdeck design allows for a fully level, no steps to the main deck.

Upon Entering this beautiful vessel you can board from the 2 stairways (port and starboard) coming up from the swim platform or from the top side aft or midship. The large cockpit has some custom features that increase the comfort and accessibility. A larger custom welded Bimini top that completely shades the aft deck. And a custom welded aft bench seat that is set back far enough to open the large lazarette. With an aft steering station equipped with full controls of engines, wheel, bow and stern thrusters, your docking abilities are greatly increased.

Upon entering the salon, to port is a L-shaped settee and custom "Bird's eye Maple" Scopinich hi-lo coffee table. To starboard is the custom private stairway to the master stateroom. The master suite is very spacious with its full beam width. It features an island king berth, large cedar lined hanging lockers, TV/VCR/SAT and an abundance of storage. The ensuite head features a large stall shower, head and sink.

Moving forward, the entertainment center is located to starboard and is complete with TV, VCR, Sat TV, CD/DVD, and beautiful cabinetry. Continuing forward, the galley is to port and stereo cabinet and pantry/storage cabinets are to starboard. The granite topped pantry cabinet features a custom wine cooler with roll-out bottle storage below and an additional (Sub Zero) refrigerator facing forward. Forward of the galley is the roomy wheelhouse. The custom L-shaped settee with cabinetry above is located to port and features a custom hi-lo table. Also in the lower helm are a full size chart table and 2 custom Stidd hi-back ultra leather helm seats at the helm station. Large windows for outstanding visibility surround the wheelhouse. Sliding doors, located port and starboard access the covered, walk-around decks.

Access to the guest staterooms is to starboard down a lighted stairway from the wheelhouse. At the base of the stairs are the washer and dryer that are housed with an additional storage area. Located amidships is the full beam VIP stateroom featuring a queen berth with drawers under, a large cedar lined hanging closets, custom aft cabinets and ensuite head which features a head, sink and stall shower. Located forward is the guest stateroom featuring another queen walk-around berth with drawers under, his and hers cedar lined hanging locker, TV/VCR/SAT and private entrance into the guest head. Located to port is another guest stateroom featuring upper and lower single berths, hanging locker, night table with storage within, reading lights and additional storage. The guest head is located amidships and to starboard. With a stall shower, head, sink and beautiful granite counters, your guests will feel pampered. The granite countertops are featured throughout the yacht in the galley, salon and all heads.

## SALON

- L-shaped settee
- Custom birds-eye maple Scopinich hi-lo coffee table
- Private stairway to the master stateroom
- Custom chair with ottoman
- Entertainment center is located to starboard with TV, VCR, Sat TV, CD/DVD, and beautiful cabinetry.
- Granite countertops are featured throughout the yacht in the salon, galley, and all heads.

## GALLEY

- Stereo cabinet and pantry/storage cabinets are to starboard of galley
- Granite- topped pantry cabinet
- Wine cooler with roll-out bottle storage below
- SubZero refrigerator
- Kenyon 4 -burner cooktop
- Dishwasher black electric stovetop
- Granite counters
- 220v oven below
- GE black side-by-side refrigerator/freezer with icemaker
- Garbage disposal
- Under-counter lighting
- Trash compactor
- Soap dispenser
- Franke sink
- Sharp microwave/convection oven
- Overhead storage cabinets
- Sliding panel between Galley and Helm.

## PILOTHOUSE

- Custom L-shaped settee with cabinetry above
- Table
- Full-size chart table, with storage locker
- 2 custom Stidd hi-back ultra leather helm seats
- Large windows for outstanding visibility surround the wheelhouse
- Sliding doors, with screens, located port and starboard access covered walkaround decks
- Stairwell to guest staterooms

## MASTER STATEROOM

- Full beam master
- Island king berth
- Large cedar lined hanging lockers
- TV/VCR/SAT



- Abundant storage
- Ensuite head features a large stall shower, head and sink

## GUEST STATEROOMS

- Washer and dryer at base of stairwell
- VIP Stateroom located amidships features a queen berth with drawers under, large cedar lined hanging closets, custom aft cabinets and ensuite head feature a head, sink and stall shower.
- Guest Stateroom located forward features another queen walk-around berth with drawers under, his and hers cedar-lined hanging locker, NCR/TV/SAT, and guest head.
- Second Guest Stateroom located to port features upper and lower single berths, hanging locker, night table with storage within, reading lights and additional storage.
- Guest Head located amidships and to starboard. With a stall shower, head, sink and beautiful granite counters.

## ELECTRONICS

### PILOTHOUSE

- (2) Nauticomp glass bridge 19" displays
- Furuno Nav Net VX2
- Furuno Nav Net VX2 FA 50 AIS receiver/transponder
- Furuno SC 50 Satellite Compass
- Furuno Radar DE 12kW 6' antenna
- Furuno Fish/depth finder
- Furuno Nav Pilot 720
- Weather station PB150
- Icom M604 VHF radio
- XM weather
- Furuno 150
- Custom ship computer
- Yacht Watchman monitoring system
- Globalstar Sat phone
- Hailer/horn
- Seatel Sat TV / 4 receivers
- Prosine Inverter
- C-phone two line system
- 7 TV monitors
- 12-station intercom system
- Closed circuit TV in engine room and stern view

## FLYBRIDGE

- Nauticomp sunlight 15" display
- Furuno color display radar, chart plotter

- Furuno Nav Pilot 711
- Furuno Nav Pilot 720 handheld
- Furuno F150
- Icom M604 VHF radio
- Dual Buel horns
- Remote spotlight

## **ELECTRICAL**

- Panda 12kW & 22Kw generators
- 220v, 120v AC electrical system
- (8) batteries with parallel switch
- All batteries upgraded to gel cell
- (2) 50 amp shore power connectors
- Bonding system
- 12v DC electrical system
- Battery charger
- Breaker panel
- Dockside electrical cables
- Statpower inverter system
- Intercom system

## **MECHANICAL**

- ABT hydraulic system consisting of (2) 25hp PTOs, a 38hp bow thruster and a 20hp stern thruster with power proportional controls at the three helm stations.
- ABT "TRAC" electronics stabilizers
- Fisher Panda generator - Port Gen (12.6 kW) 1134 hrs; Stb Gen (22 kW) 618 hrs
- Marine Air reverse-cycle air conditioning system - 5 compressors, 80,000btu
- Halon fire system
- Dual Racor fuel filters
- Hydraulic power steering
- Trim tabs
- (6) automatic bilge pumps
- Engine fuel shut-off valve
- Head Hunter system In place of standard
- 3rd holding tank
- Village Marine 800gpd watermaker
- Tides Marine drip less shaft logs
- Central vacuum system
- Reverso oil change system
- Fresh water filter
- Engine synchronizers
- Fuel filters
- Engine temperature alarm

- Headhunter Jet Paq water pump as primary
- Grainger water pump as secondary
- Spurs
- Royal Flush heads throughout

## FLYBRIDGE

Access from stairway across from galley or from a stainless steel ladder on the aft deck. Large flybridge features seating for six at the L-shaped settee with hi-to table and two Stidd low back ultra leather helm seat.

- New Electric Kenyon BBQ grill.
- Upgraded Nautical Structures 1000 lb. davit with hydraulic boom
- Vinyl covered 13' Novurania 400 DL dinghy with 50hp Yamaha 4-stroke
- Chocks with tie downs and 11ft bridle
- Radar arch has been hinged to allow for lowering when needed
- Custom Bimini top
- Switlik 6 person life raft

## MAIN DECK

- Delta 88 # anchor with 300ft plus of chain.
- Transom doors
- Bow pulpit
- Rub rail
- Navigation lights
- Folding steps on swim platform
- Fresh water washdown system
- Anchor platform for second anchor
- Integral sport deck with swim platform
- Electric windlass
- Side stanchion with lifelines
- Coast Guard safety package
- Fenders with lines
- Stainless steel plate for anchor protection
- Prop pockets
- Boarding ladder
- (2) Stidd chairs in pilothouse

## AFT DECK

- Raritan stainless steel icemaker
- Storage cabinet
- Stainless steel ladder to boat deck
- Transom door
- Aft steering station with full controls

- Integral sport deck with concealed swim ladder
- Glendinning cable master with 75' cable
- Shower wash-down
- Staircase to flybridge
- Large Lazarette
- Custom welded aft bench seating set over swim platform to provide ample room to access the Lazarette.
- Custom welded aft Bimini to that comes all the way aft over the seating area for full sun coverage.

## Исключения

---

При продаже яхты исключаются личные вещи владельца.

## Отказ от ответственности

---

Компания предоставляет описание судна или яхты добросовестно, но не может гарантировать точность этой информации, а также не ручается за техническое состояние. Покупатель должен проинструктировать своих агентов или оценщиков исследовать представленную информацию более подробно, по собственному желанию. Продажа судна или яхты, изменение цены или снятие с продажи будет происходить без предварительного уведомления.

# ФОТОГРАФИИ

**Сокпит**



**Сокпит**



**Сокпит**



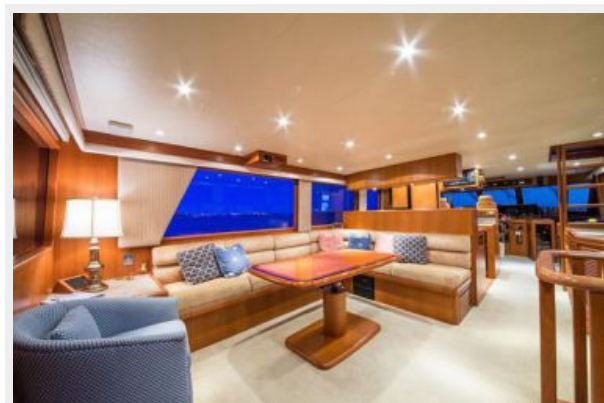
**Сокпит**



**Сокпит**



**Salon**



Salon



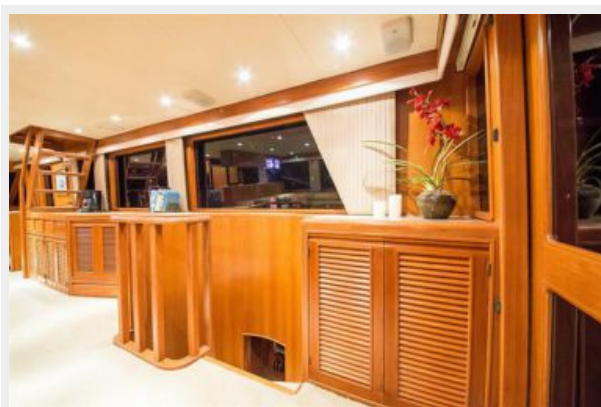
Salon



Salon



Salon



Galley



Galley



**Galley**



**Galley**



**Galley**



**Master Head**



**Master Head**



**Master Head**



**Master Stateroom**



**Master Stateroom**



**Master Stateroom**



**Master Stateroom**





**Master Stateroom**



**VIP Head**



**VIP Stateroom**



**VIP Stateroom**



**VIP Stateroom**



**VIP Stateroom**



**Forward Stateroom**



**Forward Stateroom**



### Forward Stateroom



### Forward Stateroom



### Twin Guest Stateroom



### Twin Guest Stateroom



**Laundry**



**Pilothouse**



**Pilothouse**



**Pilothouse**



**Pilothouse**



**Pilothouse**



**Flybridge**



**Flybridge**



**Flybridge**



**Flybridge**



**Flybridge**



**Flybridge**



**Flybridge**



**Flybridge**



**Flybridge**



**Flybridge**



**Flybridge**



**Flybridge**



**Engine Room**



**Engine Room**



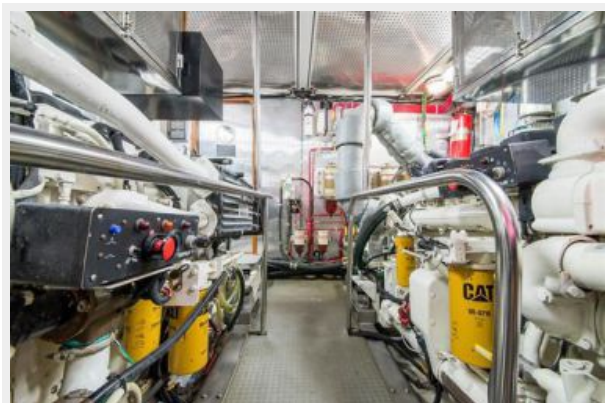
**Engine Room**



**Engine Room**



**Engine Room**



**Bow**



**Bow**



**Bow**



**Bow**



**Stern**







# КОНТАКТЫ

---

Андрей Шестаков (Andrey Shestakov) – ведущий яхтенный брокер отдела продаж яхт и судов компании Shestakov Yacht Sales Inc. Официальный представитель Shestakov Yacht Sales Inc. для русскоговорящих клиентов в центральном офисе компании в Майами/Форт Лодердейл/Флорида/США.

## Контактная информация

---

Email: [andrey@shestakovyachtsales.com](mailto:andrey@shestakovyachtsales.com)

Web: [shestakovyachtsales.com](http://shestakovyachtsales.com)

## Телефоны

---

Краснодарский край: **+7(918)465-66-44**

США, Майами, Флорида: **+1(954)274-4435**

## Время работы

---

Понедельник – Суббота: **9:00 - 21:00**  
EDT

Воскресенье: **Закрито**

## Адрес

---



Harbour Towne Marina, 850 NE 3rd St,  
STE 213, Dania, FL 33004