

BOMBSHELL — OCEAN YACHTS



Builder: [Ocean Yachts](#)

Year Built: 1987

Model: Sport Fisherman

Price: PRICE ON APPLICATION

Location: United States

LOA: 55' 0" (16.76m)

Beam: 16' 4" (4.98m)

Min Draft: 4' 0" (1.22m)

Cruise Speed: 22 Kts. (25 MPH)

Max Speed: 33 Kts. (38 MPH)

Our experienced yacht broker, Andrey Shestakov, will help you choose and buy a yacht that best suits your needs **Bombshell — Ocean Yachts** from our catalogue. Presently, at Shestakov Yacht Sales Inc., we have a wide variety of yachts available on our sale's list. We also work in close contact with all the big yacht manufacturers from all over the world.

If you would like to buy a yacht **Bombshell — Ocean Yachts** or would like help answering any questions concerning purchasing, selling or chartering a yacht, please call **+1(954)274-4435**

TABLE OF CONTENTS

TABLE OF CONTENTS	2
SPECIFICATIONS	4
Basic Information	4
Dimensions	4
Speed, Capacities and Weight	4
Accommodations	4
Hull and Deck Information	4
Engine Information	5
DETAILED INFORMATION	6
ACCOMMODATIONS & LAYOUT	6
Exclusions	7
Disclaimer	7
PHOTOS	8
Cockpit Controls	8
Cockpit	8
Galley / Dinette	10
Galley	10
Salon	10
Dinette / Entertainment Center	10
Master Stateroom	10
Master Stateroom	10
Master Head	11
master Head	11
Guest Stateroom	11
Guest Stateroom	11
Guest Stateroom	12
Guest Head	12
Guest Head	12

Guest Head	12
CONTACTS	14
Contact details	14
Telephones	14
Office hours	14
Address	14

SPECIFICATIONS

Basic Information

Category: Sport Fisherman

Sub Category: Convertible

Model Year: 1987

Year Built: 1987

Country: United States

Fly Bridge: Yes

Cockpit: Yes

Dimensions

LOA: 55' 0" (16.76m)

Beam: 16' 4" (4.98m)

Min Draft: 4' 0" (1.22m)

Speed, Capacities and Weight

Cruise Speed: 22 Kts. (25 MPH)

Cruise Speed RPM: 1800 Kts.

Max Speed: 33 Kts. (38 MPH)

Max Speed RPM: 2350 Kts.

Water Capacity: 200 Gallons

Fuel Capacity: 1000 Gallons

Accommodations

Total Cabins: 3

Sleeps: 6

Total Heads: 3

Hull and Deck Information

Hull Material: Fiberglass

Hull Finish: Fiberglass

Engine Information

Engines: 2

Manufacturer: MAN

Model: D2542D MLE

Engine Type: Inboard

Fuel Type: Diesel

DETAILED INFORMATION

ACCOMMODATIONS & LAYOUT

OVERVIEW: Sleeps 6 in 3 staterooms with 3 heads with showers.

MASTER STATEROOM: Carpeted sole Vinyl overhead| Cedar lined storage lockers Sony Triniton TV Nec VHS video cassette recorder Island berth with drawers Two swing arm lamps Cruiseaire A/C

GUEST STATEROOM, PORT Carpeted sole Vinyl overhead 3/4 berth Reading Lights Mirror Sony Triton TV Quasar video recorder Vinyl wall covering Hanging locker Kenmore clothes dryer

GUEST STATEROOM, Starboard Carpeted sole Vinyl overhead Over head light Upper & lower bunk Storage locker with stereo speaker Vinyl wall covering 4 place rod rack above lower bunk

MAIN SALON: Carpeted sole Vinyl overhead Overhead grab rail 2 sets of rod holders L-shaped sofa Teak hi/lo table 2 swivel occasional chairs End table Mirrored panels Brass lamp AC/Dc electrical panel Kidde Mariner dry fire extinguisher Badger dry chemical fire extinguisher Bar Custom valences & curtains Indirect soft lighting L-shaped dinette **ENTERTAINMENT CENTER:** Sony Bravia color TV JVC VCR/DVD Storage drawer Pioneer SX251R stereo receiver Pioneer 6 disc player, PD-M426 ICOM IC-M80 VHF radio Digital Marine electronics Northstar Navigator Direct TV unit BOSE surround system

GALLEY/LAUNDRY: Teak & holly sole Vinyl overhead KitchenAid Icemaker Stainless steel sink Two Cruisaire SMX overhead air conditioning units Ships clock Sharp Carousel II convection/microwave General Electric refrigerator 3-burner Galley Maid Empress electric stove Electric hot water heater Smoke detector

FLYBRIDGE: Nonskid deck Hardtop with 3/4 enclosure curtains Grab rail Murray Brothers helm chair Forward locker with 2 sliding doors 6 life jackets Switlik life raft Orion Alert / Locate marine signal kit Jim Buoy 20" life ring Badger fire extinguisher Air horns Two horn trumpets Two gaff hooks Bench seat with cushions Rod storage L-shaped bench seat w/ storage Stereo speakers Emergency shut down cables Trolling valves **TOWER:** Datamarine Depthfinder Hardtop KVH Trac Vision EPIRB

ELECTRONICS & NAVIGATION: Teak helm/under helm throttles Furuno 12 mile radar Fireboy Halon 1301 system discharge alarm w/ indicator light Furuno 72 mile color radar Clock Digital Marine Electronics Northstar 952X GPS Navigator Simrad IS20 Simrad AP28 auto Dytek digital water temperature gauge ICOM IC-M100 VHF radio Sony Radio Helm Breaker panel KVH under helm Seafire/under hem controls 6100i Speakers Danforth Constellation Hi Speed compass 2 Northstar Navigator / Ioran / GPS Trim tab controls

ELECTRICAL SYSTEM: Northern Lights generator Raw water cooled exhaust Racor fuel filters Dytek SD-1240 battery charger 12V-110V shorepower

DECK & HULL EQUIPMENT: Non skid deck on walking surface Aluminum bow rail Two bow cleats Five deck hatches Anchor rode hawsepipe Rupp marine triple spreader bridge release outriggers Navigation lights Grab rails

COCKPIT: Cockpit controls, starboard Teak over fiberglass deck Teak coaming boards Gunwale rod holders Starboard steering station w/ Panish single lever controls Three storage drawers Seafire fire extinguisher Deepwell freezer Sink 240V 50 amp 50" shore power cord Telephone connection Tackle locker Salt water washdown spigot Fresh water washdown spigot Dockside water connection Tonneau cover 3 stereo speakers in overhang Mounted fighting chair Livewell Refrigerated fish box

BELOW COCKPIT DECK:

Cockpit freezer compressor Fishbox refrigeration compressor Livewell raw water circulation pump / sea water washdown pump Hydraulic steering Electric / automatic bilge pump DC hold lights Highwater alarm switch 110V-V outlet

ENGINE & MECHANICAL EQUIPMENT: Kidde 1A 10BC dry chemical fire extinguisher 110V freshwater pressure pump Electric water heater Dytex SD 12-40 battery charger Two electric blowers 4 12V batteries Solenoid battery parallel switch Fresh water spigot w/ hose Electric / automatic pump Oil change pump to manifold Two Racor main engine fuel filters Fireboy 20# Halon cylinder Northern Lights 16 Kw generator Racor Generator fuel filter Electric engine block heaters

EXCLUSIONS: Owner's personal items

Exclusions

Owner's personal belongings.

Disclaimer

The Company offers the details of this vessel or yacht in good faith but cannot guarantee or warrant the accuracy of this information nor warrant the condition of the vessel. A buyer should instruct his representatives, agents, or his surveyors, to investigate such details as the buyer desires validated. This vessel or yacht is offered subject to prior sale, price change, or withdrawal without notice.

PHOTOS



Cockpit



Cockpit Controls





Galley / Dinette



Galley



Salon



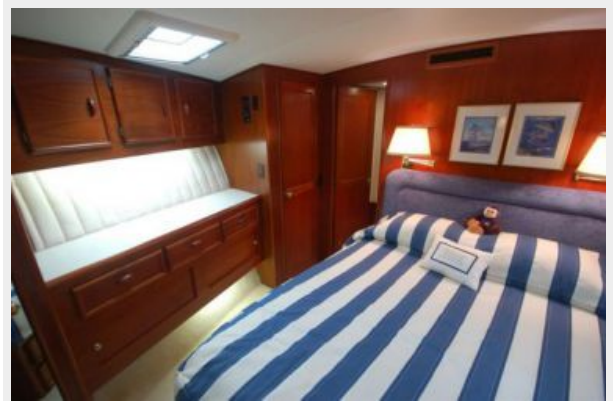
Dinette / Entertainment Center



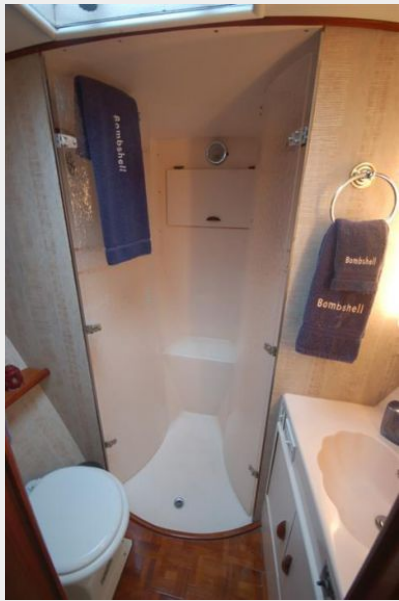
Master Stateroom



Master Stateroom



Master Head



master Head



Guest Stateroom



Guest Stateroom



Guest Head



Guest Stateroom



Guest Head



Guest Head





CONTACTS

Andrey Shestakov, leading yacht broker of the sales department of Shestakov Yacht Sales Inc. Shestakov Yacht Sales Inc., the official representative of the Miami/Fort Lauderdale FL headquarters.

Contact details

Email: andrey@shestakovyachtsales.com

Web: shestakovyachtsales.com/en/

Telephones

USA: +1(954)274-4435

Office hours

Monday – Saturday: **9:00 - 21:00** EDT

Sunday: **closed**

Address



Harbour Towne Marina, 850 NE 3rd St,
STE 213, Dania, FL 33004