

## FISHAHOLIC — VIKING



**Builder:** VIKING

**Year Built:** 2002

**Model:** Sport Fisherman

**Price:** PRICE ON APPLICATION

**Location:** United States

**LOA:** 52' 0" (15.85m)

**Beam:** 17' 6" (5.33m)

**Max Draft:** 5' 1" (1.55m)

**Cruise Speed:** 28 Kts. (32 MPH)

**Max Speed:** 1950 Kts. (2244 MPH)

Our experienced yacht broker, Andrey Shestakov, will help you choose and buy a yacht that best suits your needs **Fishaholic — VIKING** from our catalogue. Presently, at Shestakov Yacht Sales Inc., we have a wide variety of yachts available on our sale's list. We also work in close contact with all the big yacht manufacturers from all over the world.

If you would like to buy a yacht **Fishaholic — VIKING** or would like help answering any questions concerning purchasing, selling or chartering a yacht, please call **+1(954)274-4435**

---

# TABLE OF CONTENTS

---

TABLE OF CONTENTS	2
SPECIFICATIONS	4
Overview	4
Basic Information	4
Dimensions	4
Speed, Capacities and Weight	4
Accommodations	4
Hull and Deck Information	5
Engine Information	5
DETAILED INFORMATION	6
Vessel Walkthrough	6
Cockpit	6
Salon	6
Galley	7
Flybridge	7
Master Stateroom	8
VIP Stateroom	8
Guest Stateroom	8
Electronics and Navigation	9
Engine Room	9
Fishing Equipment	9
Deck and Hull Equipment	10
Updates	10
Remarks	11
Exclusions	11
Disclaimer	11
PHOTOS	13
CONTACTS	22

---

Contact details	22
Telephones	22
Office hours	22
Address	22

---

# SPECIFICATIONS

---

## Overview

---

### Basic Information

---

**Category:** Sport Fisherman

**Sub Category:** Convertible

**Model Year:** 2002

**Year Built:** 2002

**Country:** United States

**Fly Bridge:** Yes

**Cockpit:** Yes

### Dimensions

---

**LOA:** 52' 0" (15.85m)

**Beam:** 17' 6" (5.33m)

**Max Draft:** 5' 1" (1.55m)

### Speed, Capacities and Weight

---

**Cruise Speed:** 28 Kts. (32 MPH)

**Cruise Speed RPM:** 36 Kts.

**Max Speed:** 1950 Kts. (2244 MPH)

**Max Speed RPM:** 2350 Kts.

**Displacement:** 62000 Pounds

**Water Capacity:** 205 Gallons

**Fuel Capacity:** 1200 Gallons

### Accommodations

---

**Total Cabins:** 3

**Total Heads:** 2

---

## Hull and Deck Information

---

**Hull Material:** Fiberglass

---

## Engine Information

---

**Engines:** 2

**Manufacturer:** MAN

**Model:** 1050

**Engine Type:** Inboard

**Fuel Type:** Diesel

---

# DETAILED INFORMATION

---

## Vessel Walkthrough

---

Upon boarding the vessel, you will appreciate the eye for detail the owner has applied. The salon, galley, and dinette area have an open concept layout with a spacious living area and are decorated beautifully in earthtones and softgoods. Moving forward down the steps, to port you will find the large and luxurious master suite, fully accommodated with all the comforts including a queen bed with storage under and a private head with shower and vanity. To starboard, there are oversized over/under guest bunks with storage underneath and access to the full shower and head, shared with the VIP stateroom. All the way forward is the VIP suite, tastefully decorated in earthtones, with a queen berth and access to the shared full shower and head.

## Cockpit

---

- Teak Deck / Bridge Ladder by Jason Lucas
- Bluewater Chair with Rocket Launcher - Refinished 4/14, Arms Covered
- Mezzanine Style Cushions by Costa Marine in Ultra Leather
- Rupp Rod Holders Flush Mount in Back Radius, (6) Total
- Tri-Color Overhead Lights
- LED Under Gunnel Rope Lighting
- (4) Underwater Lights by Underwater Light Company (2 Down, 2 Back)
- 12V / 24V Deep Drop and Kite Outlets in Cockpit
- Poly Planar Under Gunnel Cockpit Speakers and Receiver
- Molded-In Flush Track for Costa Cockpit Cover
- Cockpit Freezer
- Insulated Drink Box
- Eskimo Ice Chipper / Dump In Deck Box
- 5-Drawer Tackle Storage with Bait Station
- Transom Door
- Fresh / Saltwater Washdown
- Oil Change System for On-Deck Pump Out
- Glendinning Cablemaster
- Jabsco Dry Out Pump in Lazarette
- Trim Tab Covers
- All Seams in Cockpit, Gunnels, Overhang, Sides of House Have Been Ground, Fiberglassed and Fared - No Seams.

## Salon

---

- Ultra Leather Sofa by Costa Marine

- Salon Entry Refinished with Amtico Flooring
- New Carpet Throughout
- Electric Salon Door
- New AME A/V System in Salon with Blu-ray DVD
- Samsung 37" Hi-Def Salon Television
- Carpet Runners
- Central Vacuum
- Covers for Cushions
- Covers for Dinette Table

---

## Galley

---

- Corian Countertop with Catch Rail
- (2) Sub-Zero Freezers
- (2) Sub-Zero Refrigerators
- Sharp Convection / Microwave Oven
- Kenyon 3-Burner Glass Top Stove
- Amtico Flooring
- Teak Dinette Table
- Leather Dinette Sofa Seats 6
- Kenmore Washer/Dryer

---

## Flybridge

---

- Palm Beach Towers Hardtop Underside Painted Blue
- New Palm Beach Towers Half Tower
- 6-Rod Holder Across Back Bridge Rail
- Bluewater Chairs Refinished in 2014
- Release Teak Helm Pod with Single Lever Controls
- Costa EZ2CY Enclosure - Newer
- Costa Contour Cushion Package with Ultra Leather
- (4) Tri-Color Overhead Light in Hardtop
- Miya EpochUS-9 Electric Teaser Reels in Hardtop
- Glendinning Helm Controls
- Elbex 4-Zone Camera System
- Graphite Dash Panel in Electronics Boxes
- High-Polished Gas Shocks for Electronics Boxes
- 110 Volt Outlet Under Helm
- LED Lighting Under Helm
- Sea Star Hydraulic Steering

- LED Running Lights
- Fireboy Remote / Automatic Fire System
- Storage Forward and Port Under Seating
- (4) JL Audio Speakers
- Dedicated Fusion Amplifier
- Simrad Docking Station for iPhones / Bluetooth
- (2) Remote VHF Speakers in Electric Teaser Box

---

## Master Stateroom

---

- Large Queen Bed with Storage Underneath
- Cedar-Lined Hanging Closets
- JVC 13" Television
- Private Head with Full Shower
- Amtico Flooring
- Overhead Bomar Hatch Replaced 4/14
- Corian Countertop
- Sealand Vacu-Flush Head

---

## VIP Stateroom

---

- Large Queen Berth Forward
- Cedar-Lined Hanging Closets
- JVC 13" Television
- Shared Full Shower and Head
- Amtico Flooring
- Corian Vanity Top
- Sealand VacuFlush Head
- Overhead Bomar Hatch Replaced 4/14

---

## Guest Stateroom

---

- Upper and Lower Wide Berths
- Shared Full Shower and Head
- Cedar-Lined Hanging Closets
- Storage Below Hatch Replaced 4/14



---

## Electronics and Navigation

---

- AME Electronics Package
- Simrad GPS Plotter - New 2013
- NSE 8" and NSO Processor on KEP 15" Glass Monitor
- Simrad 25 w 96 mi Hi-Def Radar with 7" Open Array - New 2013
- Simrad Sirius Weather and Sirius Radar with Newest Version - 2013
- Simrad AIS - New 2013
- Furuno BB-1200 Sounder
- Furuno T 2000 Water Temp
- Robertson Autopilot AP22 with Interface - All GPS Units
- Icom 604 VHF Radios - (2) New
- ACR Spotlight - New 2013
- Engine Room Cameras - Infrared with Elbex Camera Switch - (3)
- Seatec Wave Call Satellite Phone System
- Northstar GPS 1202
- Northstar GPS 962 Plotter

---

## Engine Room

---

- MAN Diesel 1050hp
- Chrome Engine Package
- Chrome Remote Mount Oil Filters in board
- Chrome and Awlgrip Snow White Racor Filters
- Blue Marine Silicon Hoses Replaced on Both Motors
- Awlgrip Snow White Painted Motors
- Awlgrip Snow White Painted Engine Room
- New Batteries 7/14
- New Livos Engine Room Fan and Exhaust System - 2010
- Remote Start - Stop
- Engine Room Cameras
- Grundfos Fresh Water System - New
- Saltwater System - New
- Eskimo Ice Chipper - 600 lb/day
- Craftsman Toolbox Awlgrippped Snow White
- Cruiseair Units all with Blue Marine Silicon Hose
- A/C Sytems Have Been

---

## Fishing Equipment

---

- Rupp 43' Outriggers with Center Rigger
- US-9 Electric Teaser Reels in Hardtop
- Bluewater Fighting Chair with Rocket Launcher
- Livewell
- (6) Rupp Rod Holders in Gunnel
- (8) Palm Beach Tower Rod Holders in Bridge Rail

---

## Deck and Hull Equipment

---

- 4-Blade Veem Interceptor Props - New 2014
- Spare Michigan 4-Blade Props
- Awlgrippped Anchor Locker with Line Hanger
- Bottom Farrow Blasted and Repainted - 6/14
- Vulkan Cupplers Replaced
- All Exterior Softgood Replaced by Costa
- Salon Sofa Covered by Costa
- Extensive Maintenance Logs
- All 1000 hour Services Completed
- Serviced Heat Exchangers and New Bundles
- New Inverters
- Reconditioned Fuel Pumps
- Raw Water Pumps Rebuilt
- Full Engine Maintenance Records

---

## Updates

---

### 2011:

- Boat Painted with Alexseal at Viking in New Gretna
- New Hardtop Painted
- New Bridge Ladder and Aluminum Bridge Rail - Palm Beach Towers
- Trim Tab Covers
- All Seams Removed and Glasses and Fared

### 2013:

- All Simrad Electronics New
- New Ultra Leather Salon Sofa
- Levos Engine Vents and Exhaust in Engine Room
- Main Engines and Genset had Hourly Service
- Heat Exchangers and Bundts Serviced

- New Injector Pumps
- New Vulkan Couplers
- Rebuilt Raw Water Pumps

## 2014:

- New Batteries
- Serviced AC Raw Water System - Murray Marine
- Bluewater Helm Chairs Completely Redone at Bluewater
- Release Teak Helm Pod Costa EZ2CY Enclosure
- Costa Contour Cushion Package Ultra Leather
- New Overhead Electric Teaser Reels US-9
- Bluewater Fighting Chair with Rocket Launcher, Refinished Arms
- New Bomar Hatches on Bow Deck
- Shaft Cutlass Bearings
- New Amtico Flooring at Salon Entryway
- New A/V System in Salon Including Samsung Flat Screen 37" Television
- Bottom Farrow Blasted and Repainted - 2 Coats Barrier and 2 Coats Bottom Paint
- New Stainless Steel Bolts on Motors Completed with 1000 Hour Service

## Remarks

---

**"Fishaholic" is now in Palm Beach and ready for inspection. Her complete paint job was meticulous and included removal of all hardware, glassing and fairing of all assembly seams, and beautifully finished with Alexseal paint. Re-assembly included all new aluminum, teak helm pod, state of the art AME electronics package, new Bluewater helm and fighting chairs, and new Costa enclosure, cushions and covers. Her engine, generator, and boat maintenance logs confirm open check book care. She was purchased by present owner in 2002 and selling to move up to a larger vessel. She is in spectacular turn key condition with many other numerous options. "Fishaholic" represents the best value on the market and will not disappoint.**

## Exclusions

---

Owner's personal belongings.

## Disclaimer

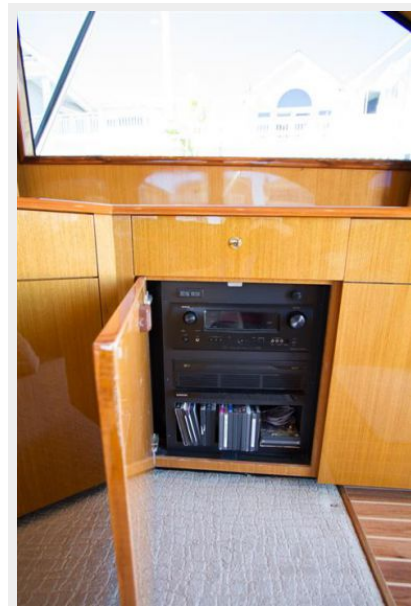
---

The Company offers the details of this vessel or yacht in good faith but cannot guarantee or warrant the accuracy of this information nor warrant the condition of the vessel. A buyer should instruct his representatives, agents, or his surveyors, to investigate such details as the buyer

desires validated. This vessel or yacht is offered subject to prior sale, price change, or withdrawal without notice.

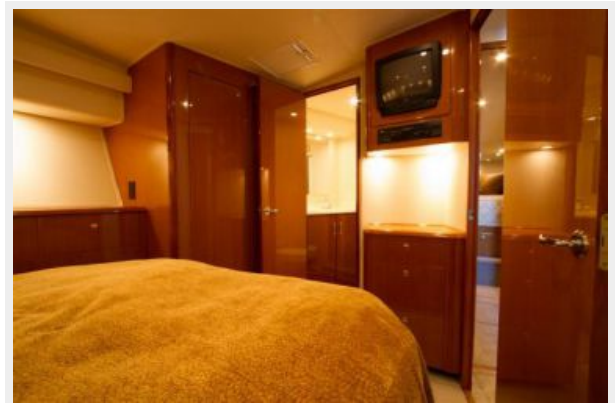
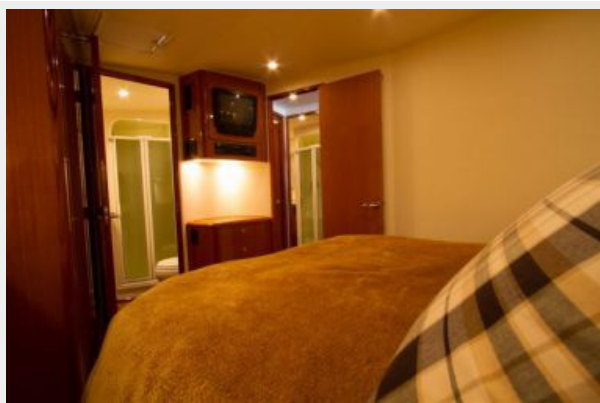
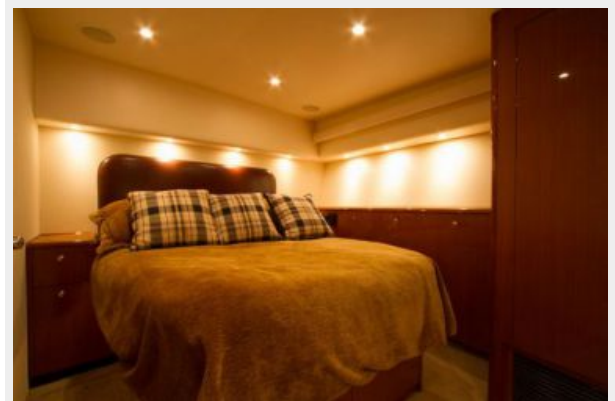
# PHOTOS







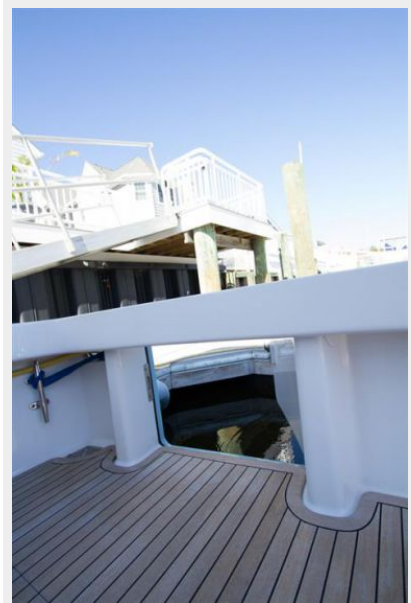


















---

# CONTACTS

---

Andrey Shestakov, leading yacht broker of the sales department of Shestakov Yacht Sales Inc. Shestakov Yacht Sales Inc., the official representative of the Miami/Fort Lauderdale FL headquarters.

---

## Contact details

---

Email: [andrey@shestakovyachtsales.com](mailto:andrey@shestakovyachtsales.com)

Web: [shestakovyachtsales.com/en/](http://shestakovyachtsales.com/en/)

---

## Telephones

---

USA: +1(954)274-4435

---

## Office hours

---

Monday – Saturday: **9:00 - 21:00** EDT

Sunday: **closed**

---

## Address

---



Harbour Towne Marina, 850 NE 3rd St,  
STE 213, Dania, FL 33004