

FISHAHOLIC — VIKING



Судостроитель: VIKING

Год постройки: 2002

Модель: Катер для спортивной рыбалки

Цена: **ЦЕНА ЯХТЫ ПО ЗАПРОСУ**

Местонахождение: United States

Длина общая: 52' 0" (15.85m)

Ширина: 17' 6" (5.33m)

Макс. осадка: 5' 1" (1.55m)

Крейс. скорость: 28 Kts. (32 MPH)

Макс. скорость: 1950 Kts. (2244 MPH)

Купить **Fishaholic — VIKING** а также выбрать подходящую вам яхту из нашего **каталога яхт** вам поможет опытный яхтенный брокер Андрей Шестаков. На сегодняшний день компания **Shestakov Yacht Sales Inc.** имеет большое количество яхт в **собственном списке продаж**, а также тесно сотрудничает со всеми крупными яхтенными **производителями** по всему миру.

Для того чтобы купить яхту **Fishaholic — VIKING** а также проконсультироваться по любому вопросу связанному с покупкой, продажей, чартером яхт позвоните по телефону **+7(918)465-66-44**.

ОГЛАВЛЕНИЕ

ОГЛАВЛЕНИЕ	2
ХАРАКТЕРИСТИКИ	4
Обзор	4
Основная информация	4
Размеры	4
Скорость, вместимость и масса	4
Размещение	4
Корпус и палуба	5
Информация о двигателе	5
ПОДРОБНОЕ ОПИСАНИЕ	6
Vessel Walkthrough	6
Cockpit	6
Salon	6
Galley	7
Flybridge	7
Master Stateroom	8
VIP Stateroom	8
Guest Stateroom	8
Electronics and Navigation	9
Engine Room	9
Fishing Equipment	9
Deck and Hull Equipment	10
Updates	10
Remarks	11
Исключения	11
Отказ от ответственности	11
ФОТОГРАФИИ	13
КОНТАКТЫ	22

Контактная информация	22
Телефоны	22
Время работы	22
Адрес	22

ХАРАКТЕРИСТИКИ

Обзор

Основная информация

Тип судна: Катер для спортивной рыбалки

Подкатегория: Convertible

Модельный год: 2002

Год постройки: 2002

Страна: United States

Открытая палуба мостика: Да

Кубрик: Да

Размеры

Длина общая: 52' 0" (15.85m)

Ширина: 17' 6" (5.33m)

Макс. осадка: 5' 1" (1.55m)

Скорость, вместимость и масса

Крейс. скорость: 28 Kts. (32 MPH)

Крейсерская скорость поворота: 36 Kts.

Макс. скорость: 1950 Kts. (2244 MPH)

Макс. скорость поворота: 2350 Kts.

Водоизмещение: 62000 Pounds

Вместимость воды: 205 Gallons

Объем топливного бака: 1200 Gallons

Размещение

Всего кают: 3

Всего ком. состава: 2

Корпус и палуба

Материал корпуса: Fiberglass

Информация о двигателе

Двигатели: 2

Производитель: MAN

Модель: 1050

Тип двигателя: Inboard

Тип топлива: Diesel

ПОДРОБНОЕ ОПИСАНИЕ

Vessel Walkthrough

Upon boarding the vessel, you will appreciate the eye for detail the owner has applied. The salon, galley, and dinette area have an open concept layout with a spacious living area and are decorated beautifully in earthtones and softgoods. Moving forward down the steps, to port you will find the large and luxurious master suite, fully accommodated with all the comforts including a queen bed with storage under and a private head with shower and vanity. To starboard, there are oversized over/under guest bunks with storage underneath and access to the full shower and head, shared with the VIP stateroom. All the way forward is the VIP suite, tastefully decorated in earthtones, with a queen berth and access to the shared full shower and head.

Cockpit

- Teak Deck / Bridge Ladder by Jason Lucas
- Bluewater Chair with Rocket Launcher - Refinished 4/14, Arms Covered
- Mezzanine Style Cushions by Costa Marine in Ultra Leather
- Rupp Rod Holders Flush Mount in Back Radius, (6) Total
- Tri-Color Overhead Lights
- LED Under Gunnel Rope Lighting
- (4) Underwater Lights by Underwater Light Company (2 Down, 2 Back)
- 12V / 24V Deep Drop and Kite Outlets in Cockpit
- Poly Planar Under Gunnel Cockpit Speakers and Receiver
- Molded-In Flush Track for Costa Cockpit Cover
- Cockpit Freezer
- Insulated Drink Box
- Eskimo Ice Chipper / Dump In Deck Box
- 5-Drawer Tackle Storage with Bait Station
- Transom Door
- Fresh / Saltwater Washdown
- Oil Change System for On-Deck Pump Out
- Glendinning Cablemaster
- Jabsco Dry Out Pump in Lazarette
- Trim Tab Covers
- All Seams in Cockpit, Gunnels, Overhang, Sides of House Have Been Ground, Fiberglassed and Fared - No Seams.

Salon

- Ultra Leather Sofa by Costa Marine

- Salon Entry Refinished with Amtico Flooring
- New Carpet Throughout
- Electric Salon Door
- New AME A/V System in Salon with Blu-ray DVD
- Samsung 37" Hi-Def Salon Television
- Carpet Runners
- Central Vacuum
- Covers for Cushions
- Covers for Dinette Table

Galley

- Corian Countertop with Catch Rail
- (2) Sub-Zero Freezers
- (2) Sub-Zero Refrigerators
- Sharp Convection / Microwave Oven
- Kenyon 3-Burner Glass Top Stove
- Amtico Flooring
- Teak Dinette Table
- Leather Dinette Sofa Seats 6
- Kenmore Washer/Dryer

Flybridge

- Palm Beach Towers Hardtop Underside Painted Blue
- New Palm Beach Towers Half Tower
- 6-Rod Holder Across Back Bridge Rail
- Bluewater Chairs Refinished in 2014
- Release Teak Helm Pod with Single Lever Controls
- Costa EZ2CY Enclosure - Newer
- Costa Contour Cushion Package with Ultra Leather
- (4) Tri-Color Overhead Light in Hardtop
- Miya EpochUS-9 Electric Teaser Reels in Hardtop
- Glendinning Helm Controls
- Elbex 4-Zone Camera System
- Graphite Dash Panel in Electronics Boxes
- High-Polished Gas Shocks for Electronics Boxes
- 110 Volt Outlet Under Helm
- LED Lighting Under Helm
- Sea Star Hydraulic Steering

- LED Running Lights
- Fireboy Remote / Automatic Fire System
- Storage Forward and Port Under Seating
- (4) JL Audio Speakers
- Dedicated Fusion Amplifier
- Simrad Docking Station for iPhones / Bluetooth
- (2) Remote VHF Speakers in Electric Teaser Box

Master Stateroom

- Large Queen Bed with Storage Underneath
- Cedar-Lined Hanging Closets
- JVC 13" Television
- Private Head with Full Shower
- Amtico Flooring
- Overhead Bomar Hatch Replaced 4/14
- Corian Countertop
- Sealand Vacu-Flush Head

VIP Stateroom

- Large Queen Berth Forward
- Cedar-Lined Hanging Closets
- JVC 13" Television
- Shared Full Shower and Head
- Amtico Flooring
- Corian Vanity Top
- Sealand VacuFlush Head
- Overhead Bomar Hatch Replaced 4/14

Guest Stateroom

- Upper and Lower Wide Berths
- Shared Full Shower and Head
- Cedar-Lined Hanging Closets
- Storage Below Hatch Replaced 4/14

Electronics and Navigation

- AME Electronics Package
- Simrad GPS Plotter - New 2013
- NSE 8" and NSO Processor on KEP 15" Glass Monitor
- Simrad 25 w 96 mi Hi-Def Radar with 7" Open Array - New 2013
- Simrad Sirius Weather and Sirius Radar with Newest Version - 2013
- Simrad AIS - New 2013
- Furuno BB-1200 Sounder
- Furuno T 2000 Water Temp
- Robertson Autopilot AP22 with Interface - All GPS Units
- Icom 604 VHF Radios - (2) New
- ACR Spotlight - New 2013
- Engine Room Cameras - Infrared with Elbex Camera Switch - (3)
- Seatec Wave Call Satellite Phone System
- Northstar GPS 1202
- Northstar GPS 962 Plotter

Engine Room

- MAN Diesel 1050hp
- Chrome Engine Package
- Chrome Remote Mount Oil Filters in board
- Chrome and Awlgrip Snow White Racor Filters
- Blue Marine Silicon Hoses Replaced on Both Motors
- Awlgrip Snow White Painted Motors
- Awlgrip Snow White Painted Engine Room
- New Batteries 7/14
- New Livos Engine Room Fan and Exhaust System - 2010
- Remote Start - Stop
- Engine Room Cameras
- Grundfos Fresh Water System - New
- Saltwater System - New
- Eskimo Ice Chipper - 600 lb/day
- Craftsman Toolbox Awlgrippped Snow White
- Cruiseair Units all with Blue Marine Silicon Hose
- A/C Sytems Have Been

Fishing Equipment

- Rupp 43' Outriggers with Center Rigger
- US-9 Electric Teaser Reels in Hardtop
- Bluewater Fighting Chair with Rocket Launcher
- Livewell
- (6) Rupp Rod Holders in Gunnel
- (8) Palm Beach Tower Rod Holders in Bridge Rail

Deck and Hull Equipment

- 4-Blade Veem Interceptor Props - New 2014
- Spare Michigan 4-Blade Props
- Awlgrippped Anchor Locker with Line Hanger
- Bottom Farrow Blasted and Repainted - 6/14
- Vulkan Cupplers Replaced
- All Exterior Softgood Replaced by Costa
- Salon Sofa Covered by Costa
- Extensive Maintenance Logs
- All 1000 hour Services Completed
- Serviced Heat Exchangers and New Bundles
- New Inverters
- Reconditioned Fuel Pumps
- Raw Water Pumps Rebuilt
- Full Engine Maintenance Records

Updates

2011:

- Boat Painted with Alexseal at Viking in New Gretna
- New Hardtop Painted
- New Bridge Ladder and Aluminum Bridge Rail - Palm Beach Towers
- Trim Tab Covers
- All Seams Removed and Glasses and Fared

2013:

- All Simrad Electronics New
- New Ultra Leather Salon Sofa
- Levos Engine Vents and Exhaust in Engine Room
- Main Engines and Genset had Hourly Service
- Heat Exchangers and Bundts Serviced

- New Injector Pumps
- New Vulkan Couplers
- Rebuilt Raw Water Pumps

2014:

- New Batteries
- Serviced AC Raw Water System - Murray Marine
- Bluewater Helm Chairs Completely Redone at Bluewater
- Release Teak Helm Pod Costa EZ2CY Enclosure
- Costa Contour Cushion Package Ultra Leather
- New Overhead Electric Teaser Reels US-9
- Bluewater Fighting Chair with Rocket Launcher, Refinished Arms
- New Bomar Hatches on Bow Deck
- Shaft Cutlass Bearings
- New Amtico Flooring at Salon Entryway
- New A/V System in Salon Including Samsung Flat Screen 37" Television
- Bottom Farrow Blasted and Repainted - 2 Coats Barrier and 2 Coats Bottom Paint
- New Stainless Steel Bolts on Motors Completed with 1000 Hour Service

Remarks

"Fishaholic" is now in Palm Beach and ready for inspection. Her complete paint job was meticulous and included removal of all hardware, glassing and fairing of all assembly seams, and beautifully finished with Alexseal paint. Re-assembly included all new aluminum, teak helm pod, state of the art AME electronics package, new Bluewater helm and fighting chairs, and new Costa enclosure, cushions and covers. Her engine, generator, and boat maintenance logs confirm open check book care. She was purchased by present owner in 2002 and selling to move up to a larger vessel. She is in spectacular turn key condition with many other numerous options. "Fishaholic" represents the best value on the market and will not disappoint.

Исключения

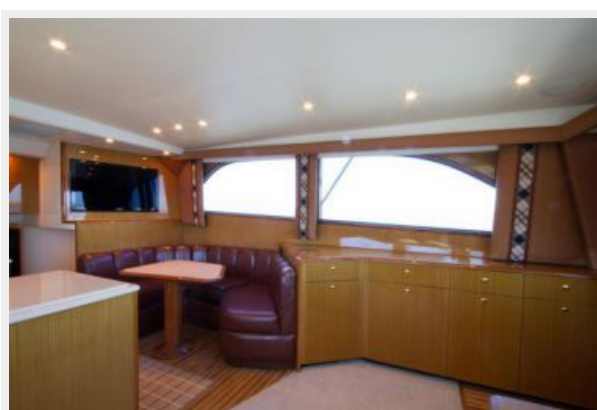
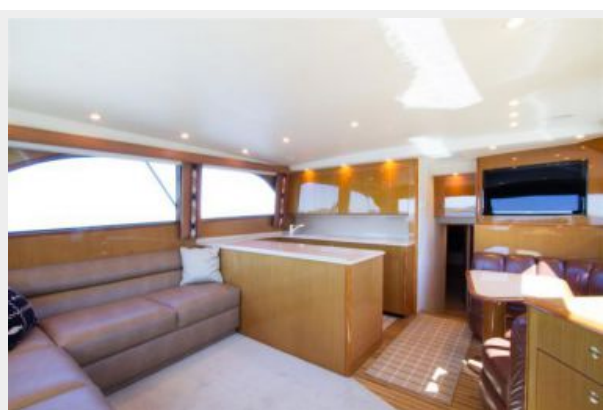
При продаже яхты исключаются личные вещи владельца.

Отказ от ответственности

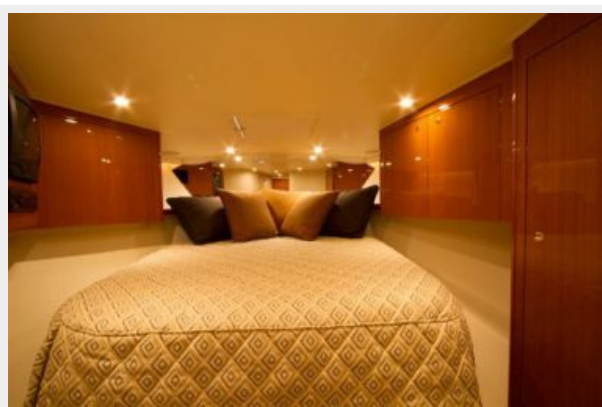
Компания предоставляет описание судна или яхты добросовестно, но не может гарантировать точность этой информации, а также не ручается за техническое состояние. Покупатель должен проинструктировать своих агентов или оценщиков

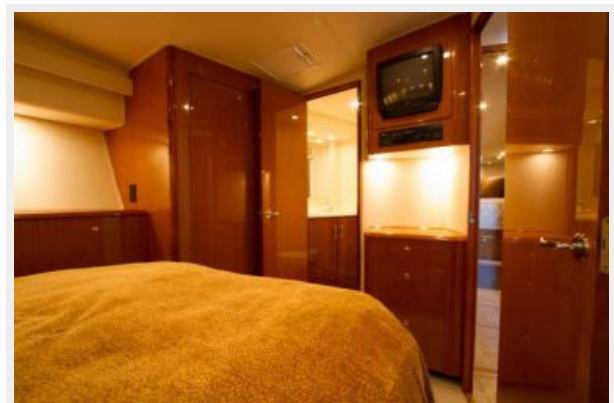
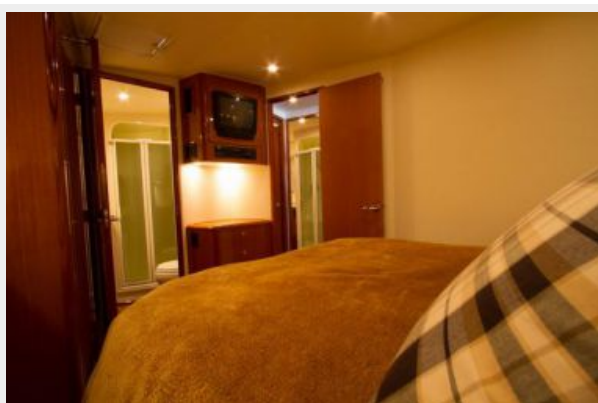
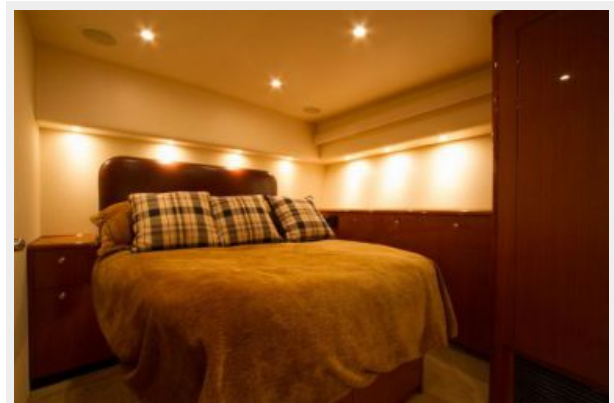
исследовать представленную информацию более подробно, по собственному желанию. Продажа судна или яхты, изменение цены или снятие с продажи будет происходить без предварительного уведомления.

ФОТОГРАФИИ





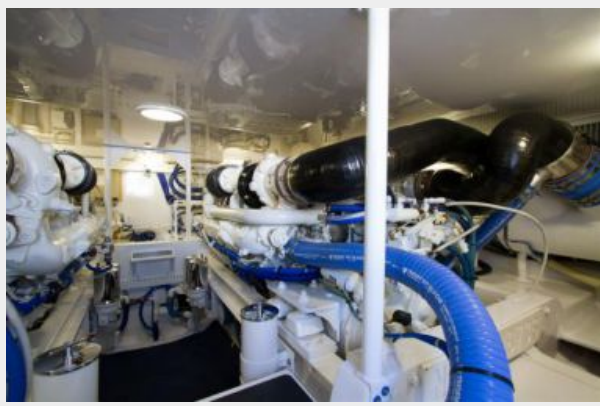














КОНТАКТЫ

Андрей Шестаков (Andrey Shestakov) – ведущий яхтенный брокер отдела продаж яхт и судов компании Shestakov Yacht Sales Inc. Официальный представитель Shestakov Yacht Sales Inc. для русскоговорящих клиентов в центральном офисе компании в Майами/Форт Лодердейл/Флорида/США.

Контактная информация

Email: andrey@shestakovyachtsales.com

Web: shestakovyachtsales.com

Телефоны

Краснодарский край: **+7(918)465-66-44**

США, Майами, Флорида: **+1(954)274-4435**

Время работы

Понедельник – Суббота: **9:00 - 21:00**
EDT

Воскресенье: **Закрето**

Адрес



Harbour Towne Marina, 850 NE 3rd St,
STE 213, Dania, FL 33004