

## TWEENER — WESTSHIP/WESTPORT



**Судостроитель:**  
WESTSHIP/WESTPORT

**Год постройки:** 1994

**Модель:** Моторная яхта

**Цена:** **ЦЕНА ЯХТЫ ПО ЗАПРОСУ**

**Местонахождение:** British Virgin Islands

**Длина общая:** 106' 0" (32.31m)

**Ширина:** 22' 6" (6.86m)

**Мин. осадка:** 5' 5" (1.65m)

**Макс. осадка:** 6' 0" (1.83m)

**Крейс. скорость:** 19 Kts. (22 MPH)

**Макс. скорость:** 21 Kts. (24 MPH)

Купить **TWEENER — WESTSHIP/WESTPORT** а также выбрать подходящую вам яхту из нашего каталога яхт вам поможет опытный яхтенный брокер Андрей Шестаков. На сегодняшний день компания **Shestakov Yacht Sales Inc.** имеет большое количество яхт в собственном списке продаж, а также тесно сотрудничает со всеми крупными яхтенными производителями по всему миру.

Для того чтобы купить яхту **TWEENER — WESTSHIP/WESTPORT** а также проконсультироваться по любому вопросу связанному с покупкой, продажей, чартером яхт позвоните по телефону **+7(918)465-66-44**.

# ОГЛАВЛЕНИЕ

---

ОГЛАВЛЕНИЕ	2
ХАРАКТЕРИСТИКИ	3
Обзор	3
Основная информация	3
Размеры	3
Скорость, вместимость и масса	3
Размещение	4
Корпус и палуба	4
Информация о двигателе	4
ПОДРОБНОЕ ОПИСАНИЕ	5
Walk Through	5
Исключения	14
Отказ от ответственности	14
ФОТОГРАФИИ	15
КОНТАКТЫ	32
Контактная информация	32
Телефоны	32
Время работы	32
Адрес	32

# ХАРАКТЕРИСТИКИ

## Обзор

This stunning 5-stateroom luxury yacht with a decor, amenities and equipment to rival any new-build yacht of her size, for less than a third of the price!

All areas, Structural, Mechanical, Electrical, Plumbing, Electronics have been carefully gone through and replaced with new where necessary or required.

Cosmetically she has benefited from a new overall paint job and a COMPLETE make-over of her interior!

This magnificent yacht will want for nothing and is ready to be enjoyed.

## Основная информация

**Тип судна:** Моторная яхта

**Модельный год:** 1994

**Год постройки:** 1994

**Страна:** British Virgin Islands

## Размеры

**Длина общая:** 106' 0" (32.31m)

**Ширина:** 22' 6" (6.86m)

**Мин. осадка:** 5' 5" (1.65m)

**Макс. осадка:** 6' 0" (1.83m)

## Скорость, вместимость и масса

**Крейс. скорость:** 19 Kts. (22 MPH)

**Крейсерская скорость поворота:** 1850 Kts.

**Макс. скорость:** 21 Kts. (24 MPH)

**Вместимость воды:** 850 Gallons

**Вместимость сточного бака:** 200 Gallons **Объем топливного бака:** 5000 Gallons

## Размещение

---

**Всего кают:** 5

**Всего коек:** 7

**Всего ком. состава:** 5

## Корпус и палуба

---

**Материал корпуса:** Fiberglass

## Информация о двигателе

---

**Двигатели:** 2

**Производитель:** MTU

**Модель:** 8V396TE94TB

**Тип двигателя:** Inboard

**Тип топлива:** Diesel

---

# ПОДРОБНОЕ ОПИСАНИЕ

---

## Walk Through

---

### Electronics

- Compass
- VHF
- DVD player
- Plotter
- Depthsounder
- Autopilot
- Computer
- CD Player
- GPS
- Log-speedometer
- Cockpit speakers
- Radio
- TV set
- Radar
- Navigation center
- Repeater(s)

### Inside Equipment

- Bow thruster
- Sea water pump
- Heating
- Dishwasher
- Battery charger
- Microwave oven
- Fresh water maker
- Washing machine
- Air compressor
- Hot water
- Electric head
- Marine head
- Deep freezer
- Electric bilge pump
- Oven
- Refrigerator
- Air conditioning

### Electrical Equipment

- Generator - 2 NEW PHASORS 2011
- Shore power inlet
- Electrical Circuit: 220V

### Outside Equipment/Extras

- Cockpit table
- Tender
- Swimming ladder
- Cockpit cushions
- Cockpit shower
- Davits
- Liferaft
- Hydraulic windlass

### Covers

- Bimini Top

### Accommodations

TWEENER recently underwent a COMPLETE refit – new interior, electronics, exterior canvas & cushions, two new generators, new bottom, complete paint job and interior woodwork was refinished in a beautiful dark rosewood.

She sleeps ten (10) guests in five (5) staterooms with an additional three (3) staterooms for 4 crew aft. All guest staterooms have ensuite heads and entertainment centers.

### Aft Deck

The largest Aft Deck area with a built-in settee and freestanding chairs can accommodate ten (10) guests for dining. The owner installed a beautifully varnished custom teak table. A stainless steel spiral staircase provides outdoor access to the Flybridge. For service and entertainment, there is a full wet bar with icemaker, ample storage in port & starboard lockers.

Down the molded steps, you will find the cockpit, which is useful for fishing or water sports setup. There are oversized, reinforced deck cleats for towing as much as a 35' Center Console tender (not included). You can access the large integral swim platform through the transom door. Here at the swim platform you will find three (3) underwater lights and easy access to the water.

### Salon

The Salon takes advantage of the full 23' beam, providing incredible space for the owners and guests.

- Large built-in corner settee with overstuffed cushions NEW Flat Screen TV's throughout
- State of the Art Entertainment System with Denon 7.1 Channel Receiver, Escent Digital

Media Manager with 320 GB of CD storage

- Two (2) 400 disc DVD/CD changers with 700+ movies, and an iPod docking station & Apple TV (all controlled by a single Smart Remote)
- Fully equipped wet bar (large, curved) with four (4) barrel-style chairs, refrigerator, icemaker and storage Day head with marble countertops & Jado fixtures Kenmore wine cooler (holds up to forty bottles)

## Salon Dining

Formal dining for up to eight (8) guests is enjoyed at the forward end of the Salon.

## Galley

The full beam “Country Kitchen” style galley is fully equipped and seats up to eight (8) guests in a comfortable, less formal dining area.

- New Granite countertops, 2011
- Counter space and storage
- KitchenAid dishwasher
- KitchenAid trash compactor
- Frigidaire self-cleaning convection oven
- Four (4)-burner cooktop
- GE Microwave oven
- Pullout pantry
- KitchenAid SUBRA48 refrigerator/freezer, new 2011
- Double stainless steel Franke sink with disposal, new 2011
- Samsung 22" LED Flat Screen TV
- Sony CD/DVD player
- Ceiling speakers with volume controls

## Master Stateroom

- King-sized berth
- Granite countertops
- 14-drawer bureau
- Cedar lined walk-in closet
- Personal safe
- Entertainment Center with 32" Sharp Aquos LCD TV, & DVD player

## Master Head

- His & her heads
- Walk-through Shower, new 2011

## Guest Staterooms (Four Total)

All four staterooms are well kept and nicely appointed for up to eight (8) guests. With two

staterooms located midship near the master and two staterooms forward of the Galley, there is enough room to handle any number of guests.

- Midship Guest Queen Stateroom: Queen berth, en-suite head & entertainment system with 20" Sharp LCD TV
- Midship Guest Twin Stateroom: Two (2) twin berths, en-suite head & entertainment system with 20" Sharp LCD TV
- Forward Guest Stateroom: Large double berth, en-suite head & entertainment system with 20" Sharp LCD TV
- Forward V-Berth Stateroom: Two (2) twin v-berths, en-suite head & entertainment system with 20" Sharp LCD TV

A laundry facility is located in the forward v-berth head, and consists of a Whirlpool stackable washer/dryer.

### **Crew Quarters**

The Crew Quarters consists of a Captain's cabin and two (2) individual crew cabins. The Captain's Quarters have a large double berth. The first & second crew stateroom has a single bunk, which allows for flexible crew arrangements. All staterooms have their own TV & DVD player. This area (as well as the engine room) is accessed from the Cockpit via a watertight door. Bosch washer & dryer.

### **Pilothouse**

The Raised Pilothouse features excellent visibility with large wrap-around windows and an elevated settee with a table. Well equipped and decorated, this is an efficient place for the captain & crew to work while allowing the guests to relax and enjoy the view.

Underneath the Pilothouse, there is a large storage area with a extra freezer and a extra refrigerator (both are Sub Zero), electronics & extra storage and HP Desktop communication computer.

### **Electronics**

#### **Navigation:**

- Furuno GP150 x 2
- PB150 Power Boat Weather Station
- Furuno FA-50 AIS transponder, 2010
- Furuno GPS GP-80
- Furuno Depth Sounder – RD-30
- Furuno NavNet
- Naiad Marine Datum computer control head
- Furuno 72NM Radar, x 2 (one new in 2010 the other new in 2011)
- MTU Electronic main engine gauges
- ComNav 2001 autopilot



- One (1) ICOM ICM604 VHF, 2010
- One (1) ICOM ICM504 VHF, 2010
- Furuno DFF1 blackbox fish finder
- Two (2) Furuno MDF12
- Two (2) NavNet 3D monitors
- Furuno 526 ST-MS7 multi-sensor transducer
- ComNav Rudder indicator
- ACR RCL-100 Spotlight control head
- Bow thruster switch
- ZF engine controls
- Trim tab level controller
- Alden Navtex receiver
- Engine Room camera, new 2011 PTZ
- Security cameras, fixed flybridge and aft deck
- Single side band radio (SEA 225 HF/SSB)
- Westship alarm system control board
- Ritchie ships compass
- Two (2) Phasor generators, electronic and start/stops

### **Communications:**

- KVH Tracphone – Fleet 55 system
- Panasonic Hybrid system phone
- Wi-Fi booster allows guests to take advantage of local providers
- Three (3) Wireless N Internet Routers, C1560 WAP4410N
- HP Office Jet all-in-one

### **Entertainment:**

- KVH Gyrotrac-Tracvision with US & Caribbean LNBS
- Fusion iPod/iPhone compatible stereo
- Flat Screen TVs, Satellite receivers, and entertainment systems throughout the vessel

### **Flybridge**

The Flybridge is a great outdoor entertainment area with ample seating, two (2) cocktail tables, oversized Jacuzzi, full service wet bar with four (4) bar stools, stereo system with iPod dock. This area is protected by a Bimini top and Eisenglass enclosure if needed. The Jacuzzi can be quickly covered to become a sun pad with umbrella shade to suit the guests' needs.

Further aft you will find the watersports deck with one (1) Yamaha 1300R Jet Ski and a full sized tender that are launched by the 2000lb Marquipt davit.

A stainless steel propane BBQ allows the chef to expand the culinary offerings as well. In addition to a commercial-grade icemaker, you will also find two (2) freezers for additional food storage.

There is also a redundant steering station with three (3) helm chairs to observe the action and two (2) wing stations on either side for easy docking and close-quarters maneuvering.

### **Flybridge Electronics & Controls:**

- Furuno 12' MFD x 2
- ComNav autopilot
- Furuno GPS (remote)
- Furuno Wind, speed & depth
- ComNav Tiller
- Bow thruster control (3)
- ComNav rudder indicator
- Trim tab control & indicator
- ICOM VHF remote mic's
- Port & starboard wing stations consisting of Mathers controls with bow thruster and job level control

### **Electrical System**

- Two (2) 100AMP single-phase shore cords (1 on a Glendenning reel) are used for shore power
- Two (2) Additional 100AMP receptacles are located on the bow
- Two (2) Brand New Phasor 60KW generators (installed August 2011), approximately 2800 hours each.
- 60-Cycle (Hz) throughout

### **Deck & Hull**

- Single Danforth style anchor at bow
- Maxwell 2500 Anchor windlass system
- Marquipt Tide Rider boarding ladder
- Sunbathing pad located on bow (bunny pad)
- Large bosun lockers on port/starboard side of bow
- Fortress back-up anchor 30' chain & 300' line

### **Engine Room & Mechanical Equipment**

- Two (2) MTU 8V396TE94 diesels, 1525 HP with approx. 850 engine hours
- ZF BW255 Transmissions (2.33:1 Drive)
- Two (2) new 60KW Phasor Generators in 2011, 2850 hours since brand new
- Electronic Controls
- CruiseAir 16 Ton system with soft starts
- Four (4) Independent variable speed blowers
- Two (2) Mach 5 Headhunter fresh water pumps plus 12 Volt backup
- 220V & 12V air compressor for pneumatic system
- DeAngelo exhaust risers

- Two (2) Sea Recovery Water makers – 1200 GPD each
- New membrains, 2014
- New CAT pumps, 2014
- New Raw water pumps, 2014
- New rotors, impellers and seals May 2014
- MultiSea 2000 stabilizer upgrade
- Oil transfer system with 50 gallons capacity for new oil & 90-gallons of used oil
- Two (2) Hot water heaters
- Hynautic hydraulic steering system
- Wesmar 50HP Bow thruster
- Halon fire suppression system for engine room
- Bennett Trim tabs
- AC raw water pumps and motors new may 2014
- Watermaker

### **Water Sports & Recreation**

- 14' Novurania with 60HP Yamaha
- Yamaha Jet Ski, GP1300R
- Fully automated Brownie's dive compressor with 6' whip and fill stations

### **Other Features & Equipment**

- EPIRB (Type Rapid fix)
- 12-Man Givens life raft
- Refit started in October 2011
- New Paint job
- Generators new 2011
- New wheel house electronics
- New zincs (2014)
- Installed wireless Internet
- Updated Escient entertainment system
- New washer & dryer in guest area
- Stabilizers serviced (June 2014)

### **Refit Details**

- New windows, rebedded, caulked and re-glazed
- New wall covering throughout entire vessel
- New headliner and lighting throughout entire vessel
- New mattresses throughout vessel
- Naiad Stabilizers rebuilt and serviced
- New shades, black outs and shears throughout vessel
- New Misc. hardware replaced ,re-plating, anodizing and chroming throughout vessel
- New house paint including Grey Striping

- New Grey Boot Stripe
- New Jacuzzi controls and main unit replaced
- New Motorized Pop up TV in Salon
- New Motorized Pop up TV on Cal Deck
- New TVs throughout Vessel
- New Satellite TV throughout vessel
- New Wifi throughout vessel
- New Direct TV boxes throughout vessel
- New Surround Sound in Salon
- New Surround Sound in Master
- New AV equipment throughout vessel
- New LED lighting and dimmers, switches throughout vessel
- New electrical outlets, covers, switches throughout vessel
- New LED exterior lighting throughout vessel
- New underwater lighting aft
- New refrigerator on bridge
- New wing controls on bridge
- New windscreen on Bridge
- New anodized seat hardware on bridge
- New Life rings
- New Marble aft deck
- New Marble pilot house
- New polish on all Corian tops
- New complete multi-step wax and polish of entire vessel
- New bottom paint
- New thru hulls
- New zincs
- New galley stove
- New custom flooring in crew, forward cabins and heads
- New house batteries
- New air handlers, chillers and/or serviced
- New rudder cladding and service
- New main boat computer
- New complete bottom job
- New contemporary cushions, sun pads and pillows
- New AC vents color matched and powder coated
- New bar faucet
- New head faucets all
- New shower faucets all
- New heads-(3)
- All heads serviced
- New cabinetry hardware
- New engine hoses
- New port exhaust fan

- Rudder system upgraded to Tides driplless system
- All cameras services or replaced
- All tanks topped off and checked for leaks
- Forward water tank repaired
- Bilges steam cleaned
- Running shafts balanced
- Props trued
- All navigational equipment serviced and tested
- Complete AC service of entire vessel
- Engines completely serviced-Scarano Marine
- Gens completely serviced-Scarano Marine
- Thrusters rebuilt
- Eisenglass and stainless frame polished
- Dinghy Serviced and detailed
- Jet Ski Serviced
- Davit serviced
- VSAT serviced

## **New Furnishings**

### **Work completed by:**

- Fine Line Marine-electrical
- Scarnano Marine-engines and Gens
- Ruslan Yacht-woodworking-carpentry
- New life Marble and Granite
- Bayside Canvas & Yacht
- High Seas Yacht-rudder, props, stabilizers
- Top Team Services-Wax & Misc.
- All Points Marine-General
- Ocean View Yacht Windows
- C&N Yacht Finishing- paint
- Voyager Marine-A/V, Navigational
- Ocean Dynamics-bridge Windscreen
- South Florida Hot tub
- LUU Marine
- Beard Marine-HVAC
- CC Cooper Designs

Total cost of repairs, deferred maintenance and new items 600k from 5/14 to 9/14.

Prior to our acquisition \$1 mm was spent on a new Awlgrip paint job, rebuild of engines, new gensets, electronics, etc.

## **Exclusions**

A list of exclusions will be made available on request.

## Исключения

---

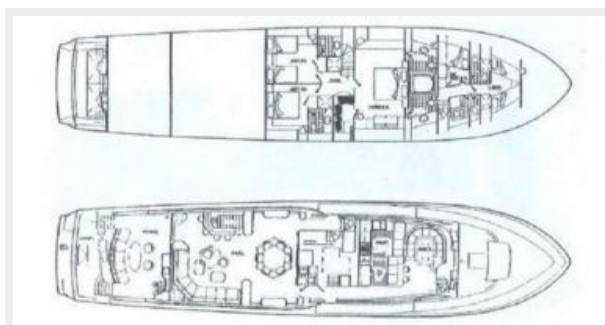
При продаже яхты исключаются личные вещи владельца.

## Отказ от ответственности

---

Компания предоставляет описание судна или яхты добросовестно, но не может гарантировать точность этой информации, а также не ручается за техническое состояние. Покупатель должен проинструктировать своих агентов или оценщиков исследовать представленную информацию более подробно, по собственному желанию. Продажа судна или яхты, изменение цены или снятие с продажи будет происходить без предварительного уведомления.

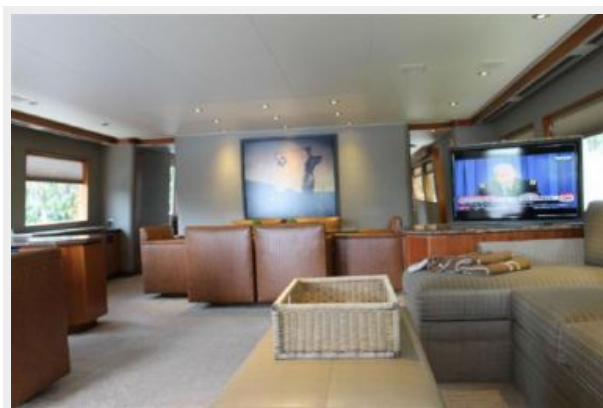
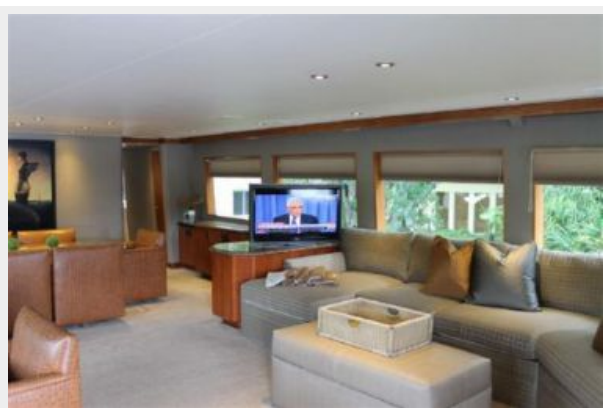
# ФОТОГРАФИИ

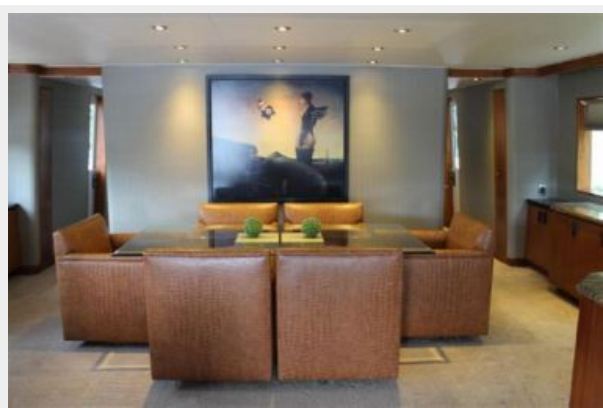




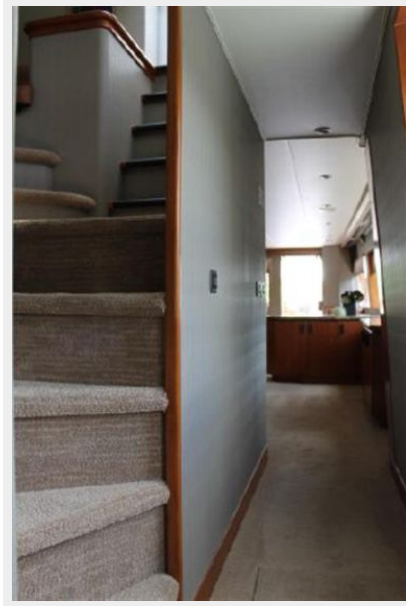






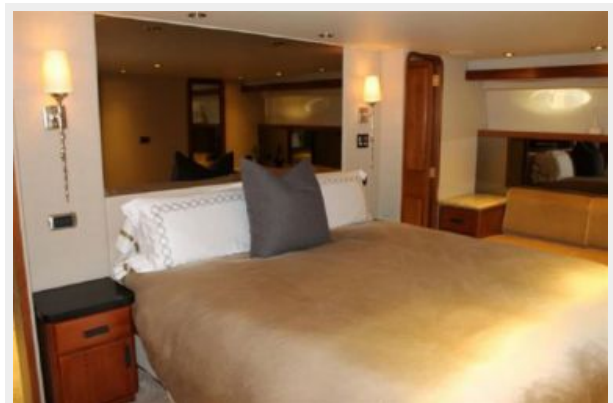




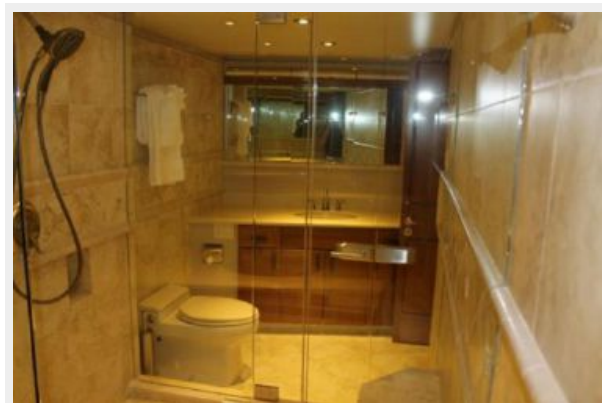








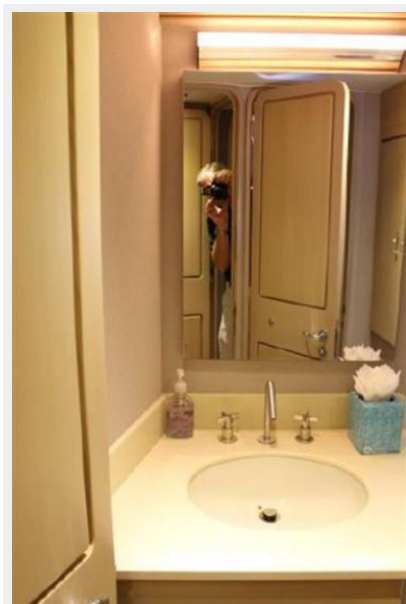




























# КОНТАКТЫ

---

Андрей Шестаков (Andrey Shestakov) – ведущий яхтенный брокер отдела продаж яхт и судов компании Shestakov Yacht Sales Inc. Официальный представитель Shestakov Yacht Sales Inc. для русскоговорящих клиентов в центральном офисе компании в Майами/Форт Лодердейл/Флорида/США.

## Контактная информация

---

Email: [andrey@shestakovyachtsales.com](mailto:andrey@shestakovyachtsales.com)

Web: [shestakovyachtsales.com](http://shestakovyachtsales.com)

## Телефоны

---

Краснодарский край: **+7(918)465-66-44**

США, Майами, Флорида: **+1(954)274-4435**

## Время работы

---

Понедельник – Суббота: **9:00 - 21:00**  
EDT

Воскресенье: **Закрыто**

## Адрес

---



Harbour Towne Marina, 850 NE 3rd St,  
STE 213, Dania, FL 33004