

COLU' COLU' 2 — CANTIERE NAUTICO



Builder: CANTIERE NAUTICO

Year Built: 2011

Model: Center Console

Price: PRICE ON APPLICATION

Location: Italy

LOA: 36' 7" (11.15m)

Beam: 11' 6" (3.50m)

Min Draft: 2' 8" (0.80m)

Cruise Speed: 27 Kts. (31 MPH)

Max Speed: 35 Kts. (40 MPH)

Our experienced yacht broker, Andrey Shestakov, will help you choose and buy a yacht that best suits your needs **COLU' COLU' 2 — CANTIERE NAUTICO** from our catalogue. Presently, at Shestakov Yacht Sales Inc., we have a wide variety of yachts available on our sale's list. We also work in close contact with all the big yacht manufacturers from all over the world.

If you would like to buy a yacht **COLU' COLU' 2 — CANTIERE NAUTICO** or would like help answering any questions concerning purchasing, selling or chartering a yacht, please call **+1(954)274-4435**

TABLE OF CONTENTS

TABLE OF CONTENTS	2
SPECIFICATIONS	3
Overview	3
Basic Information	3
Dimensions	3
Speed, Capacities and Weight	3
Accommodations	3
Hull and Deck Information	4
Engine Information	4
DETAILED INFORMATION	5
Deck Equipment	5
Exclusions	5
Disclaimer	5
PHOTOS	6
CONTACTS	10
Contact details	10
Telephones	10
Office hours	10
Address	10

SPECIFICATIONS

Overview

LIKE NEW

Basic Information

Category: Center Console

Sub Category: Walk-around

Model Year: 2012

Year Built: 2011

Country: Italy

Vessel Top: Bimini Top

Dimensions

LOA: 36' 7" (11.15m)

Beam: 11' 6" (3.50m)

Min Draft: 2' 8" (0.80m)

Speed, Capacities and Weight

Cruise Speed: 27 Kts. (31 MPH)

Max Speed: 35 Kts. (40 MPH)

Water Capacity: 132.086026 Gallons

Fuel Capacity: 211.3376416 Gallons

Accommodations

Total Cabins: 2

Sleeps: 5

Total Heads: 1

Hull and Deck Information

Hull Material: Fiberglass

Deck Material: Teak and Fiberglass

Hull Configuration: Modified V-Hull

Hull Color: Blue

Hull Finish: Inox

Engine Information

Engines: 2

Manufacturer: Cummins Mercruiser

Model: 4.2

Engine Type: I/O

Fuel Type: Diesel

DETAILED INFORMATION

Deck Equipment

• Depthsounder • Log-Speedometer • TV Set • Navigation Center • Plotter • Autopilot • Radio • Compass • CD Player • GPS • Cockpit Speakers • VHF • Bow Thruster • Electric Bilge Pump • Manual Bilge Pump • Electric Head • Hot Water • Refrigerator - Inside & outside • Sea Water Pump • Battery Cha • Shore Power Inlet Teak Cockpit • Cockpit Shower • Teak Sidedecks • Cockpit Cushions • Cockpit Table • Swimming Ladder • Cockpit Cover

Exclusions

Owner's personal belongings.

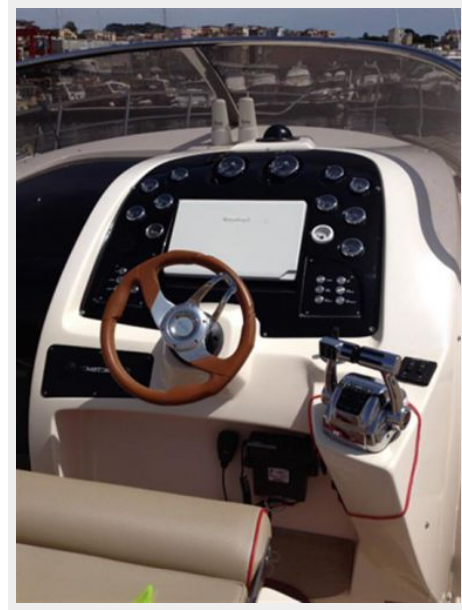
Disclaimer

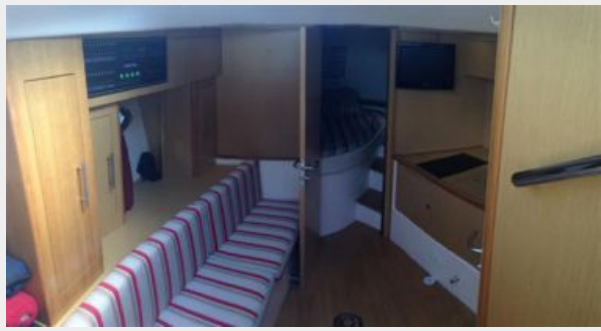
The Company offers the details of this vessel or yacht in good faith but cannot guarantee or warrant the accuracy of this information nor warrant the condition of the vessel. A buyer should instruct his representatives, agents, or his surveyors, to investigate such details as the buyer desires validated. This vessel or yacht is offered subject to prior sale, price change, or withdrawal without notice.

PHOTOS









CONTACTS

Andrey Shestakov, leading yacht broker of the sales department of Shestakov Yacht Sales Inc. Shestakov Yacht Sales Inc., the official representative of the Miami/Fort Lauderdale FL headquarters.

Contact details

Email: andrey@shestakovyachtsales.com

Web: shestakovyachtsales.com/en/

Telephones

USA: +1(954)274-4435

Office hours

Monday – Saturday: **9:00 - 21:00** EDT

Sunday: **closed**

Address



Harbour Towne Marina, 850 NE 3rd St,
STE 213, Dania, FL 33004