

## WASABI — CABO



**Builder:** CABO

**LOA:** 35' 0" (10.67m)

**Year Built:** 2000

**Model:** Sport Fisherman

**Price:** PRICE ON APPLICATION

**Location:** United States

Our experienced yacht broker, Andrey Shestakov, will help you choose and buy a yacht that best suits your needs **Wasabi — CABO** from our catalogue. Presently, at Shestakov Yacht Sales Inc., we have a wide variety of yachts available on our sale's list. We also work in close contact with all the big yacht manufacturers from all over the world.

If you would like to buy a yacht **Wasabi — CABO** or would like help answering any questions concerning purchasing, selling or chartering a yacht, please call **+1(954)274-4435**

---

# TABLE OF CONTENTS

---

TABLE OF CONTENTS	2
SPECIFICATIONS	3
Overview	3
Basic Information	3
Dimensions	3
Speed, Capacities and Weight	3
Accommodations	3
Hull and Deck Information	3
Engine Information	4
DETAILED INFORMATION	5
Power	5
Galley/Salon	5
Head	5
Fly Bridge	6
Cockpit	6
Exclusions	6
Disclaimer	6
PHOTOS	8
CONTACTS	19
Contact details	19
Telephones	19
Office hours	19
Address	19

---

# SPECIFICATIONS

---

## Overview

---

Fresh to market please find "wasabi" a 2000 35 Cabo FB with low hours. She is extremely clean and recently freshened with new EZ2CY curtains. Centrally located in eastern N C for a north or south delivery she will be the next 35 CABO to be sold. Call now as it is boat show season

## Basic Information

---

**Category:** Sport Fisherman

**Sub Category:** Convertible

**Model Year:** 2000

**Year Built:** 2000

**Country:** United States

## Dimensions

---

**LOA:** 35' 0" (10.67m)

## Speed, Capacities and Weight

---

**Displacement:** 20000 Pounds

**Fuel Capacity:** 420 Gallons

## Accommodations

---

**Total Cabins:** 1

## Hull and Deck Information

---

**Hull Material:** Fiberglass

---

## Engine Information

---

**Engines:** 2

**Manufacturer:** Caterpillar

**Model:** 3208TA

**Engine Type:** Inboard

**Fuel Type:** Diesel

---

## DETAILED INFORMATION

---

### Power

---

- Twin CAT 3208TA 435hp approximately 1,400hrs
- Alternator and after coolers rebuilt 2013
- Prop speed on all underwater gear
- Westerbeke 8.0 gen set 1350hrs
- Gen set rebuilt 2013

### Galley/Salon

---

- Teak wood trim and cabinet faces, passage doors etc
- Teak and holly salon and companionway throughout
- Solid surface counter tops with under mount SS sink
- Recessed 2 burner cook top
- Sharp Micro wave convection oven
- Sharp TV
- Refrigerator freezer
- Bose stereo
- U shape sectional to star with teak hi low table
- Port settee with toss pillows
- Cruise air SMX AC reverse cycle heat system
- Bow Stateroom with tapered queen berth
- Overhead bow mar hatch
- 2 hanging lockers
- 9" Sony TV
- Berth covers and shams
- Guest Stateroom
- Over under berths
- Storage draws

### Head

---

- Enclosed head with shower stall
- Vacuflush toilet with tank tender system
- Macerator
- Solid surface vanity tope with under mount ss sink
- Hot water heater
- Pressured fresh water system

---

## Fly Bridge

---

- Twin Pompanette F/G helm chairs with cushion sets and covers
- FG molded hard top with flush lights
- New 2013 4 side EZ2CY enclosure
- Aft Flybridge rail rod rack
- Rupp single spreaders bridge release riggers
- Forward bench cushions
- Electronics
- Garmin 5212GPS Plotter with Chirp transducer
- Northstar 952 GPS
- Simrad AP 20 autopilot
- Icom M-604 VHF radio and hailer
- Compass
- Engine sync
- Furuno radar with 3' open array antenna
- Salon Furuno remote
- ACR remote spotlight
- Bow pulpit with Lewmar windlass
- Oil change system
- Fire suppression system
- Trim tabs
- Hydraulic steering with ss wheel

---

## Cockpit

---

- Transom box and live well
- Transom door
- Refrigerated in deck fish box 1 of 2
- 5 gunwhale rod holders
- Fresh and salt water washdowns
- Aft cockpit engine box cushions
- Cockpit coaming pads
- Twin 30 amp shore power cords

---

## Exclusions

---

Owner's personal belongings.

---

## Disclaimer

---

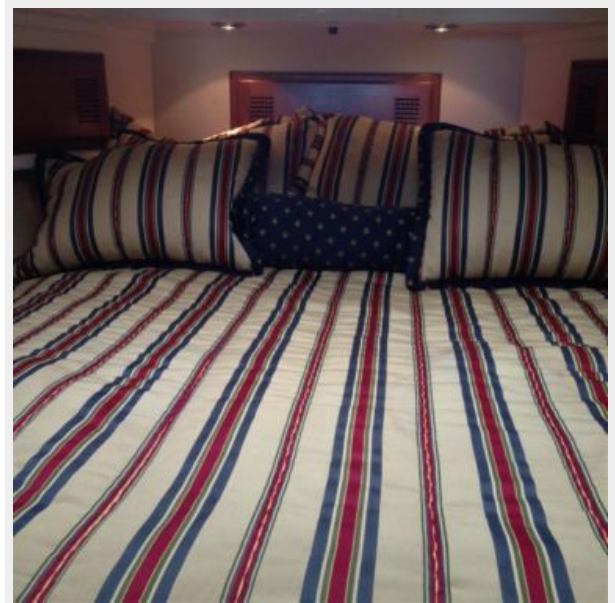
The Company offers the details of this vessel or yacht in good faith but cannot guarantee or

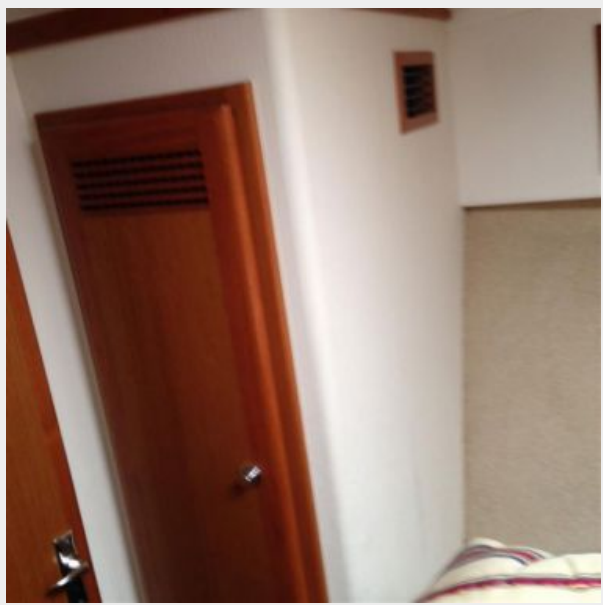
warrant the accuracy of this information nor warrant the condition of the vessel. A buyer should instruct his representatives, agents, or his surveyors, to investigate such details as the buyer desires validated. This vessel or yacht is offered subject to prior sale, price change, or withdrawal without notice.

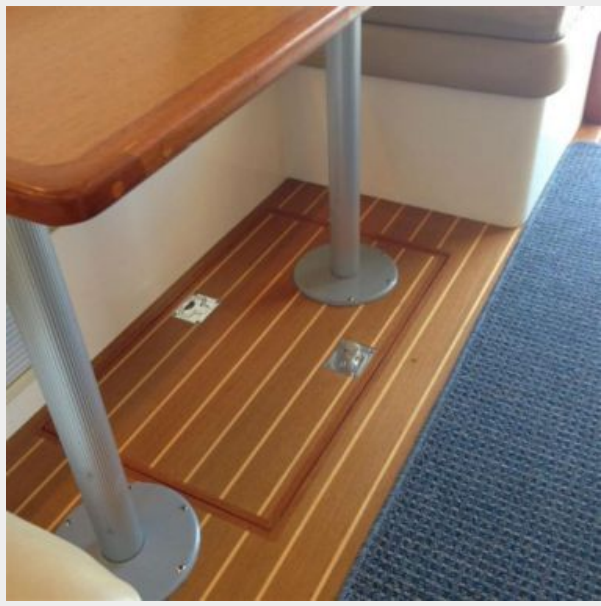
# PHOTOS



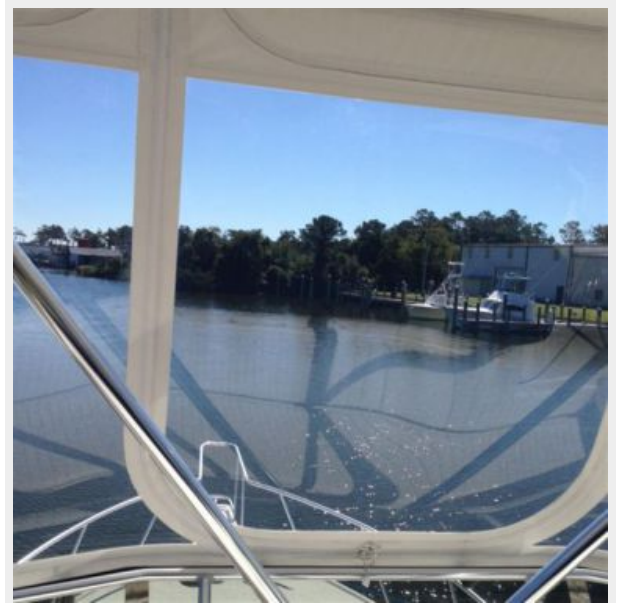




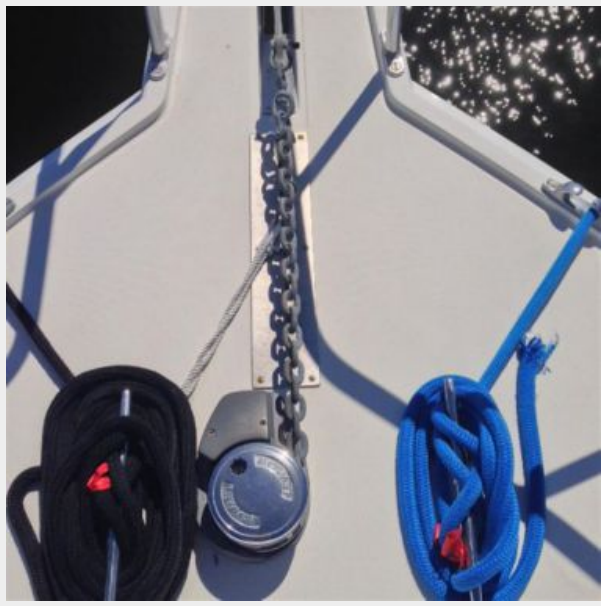






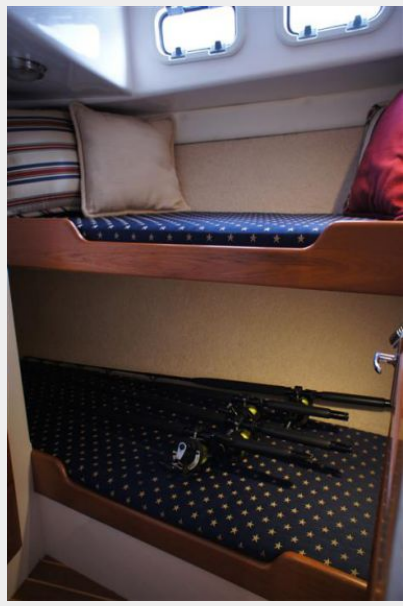














---

# CONTACTS

---

Andrey Shestakov, leading yacht broker of the sales department of Shestakov Yacht Sales Inc. Shestakov Yacht Sales Inc., the official representative of the Miami/Fort Lauderdale FL headquarters.

---

## Contact details

---

Email: [andrey@shestakovyachtsales.com](mailto:andrey@shestakovyachtsales.com)

Web: [shestakovyachtsales.com/en/](http://shestakovyachtsales.com/en/)

---

## Telephones

---

USA: +1(954)274-4435

---

## Office hours

---

Monday – Saturday: **9:00 - 21:00** EDT

Sunday: **closed**

---

## Address

---



Harbour Towne Marina, 850 NE 3rd St,  
STE 213, Dania, FL 33004