

## LITTLE STORMY — FJORD YACHTS



**Builder:** FJORD YACHTS

**Year Built:** 1987

**Model:** Cruiser

**Price:** PRICE ON APPLICATION

**Location:** United States

**LOA:** 31' 0" (9.45m)

**Beam:** 10' 5" (3.17m)

**Min Draft:** 3' 0" (0.91m)

**Max Draft:** 3' 0" (0.91m)

**Cruise Speed:** 17 Kts. (20 MPH)

**Max Speed:** 21 Kts. (24 MPH)

Our experienced yacht broker, Andrey Shestakov, will help you choose and buy a yacht that best suits your needs **Little Stormy — FJORD YACHTS** from our catalogue. Presently, at Shestakov Yacht Sales Inc., we have a wide variety of yachts available on our sale's list. We also work in close contact with all the big yacht manufacturers from all over the world.

If you would like to buy a yacht **Little Stormy — FJORD YACHTS** or would like help answering any questions concerning purchasing, selling or chartering a yacht, please call **+1(954)274-4435**

# TABLE OF CONTENTS

|  |    |
|--|----|
| TABLE OF CONTENTS                      | 2  |
| SPECIFICATIONS                         | 4  |
| Overview                               | 4  |
| Basic Information                      | 4  |
| Dimensions                             | 4  |
| Speed, Capacities and Weight           | 4  |
| Accommodations                         | 4  |
| Hull and Deck Information              | 5  |
| Engine Information                     | 5  |
| DETAILED INFORMATION                   | 6  |
| 31' Fjord Overview                     | 6  |
| 31' Fjord Galley                       | 6  |
| 31' Fjord Electronics & Entertainment  | 6  |
| 31' Fjord Electrical System            | 7  |
| 31' Fjord Engine/Mechanical Equipment  | 7  |
| 31' Fjord Deck Equipment               | 7  |
| Exclusions                             | 8  |
| Disclaimer                             | 8  |
| PHOTOS                                 | 9  |
| 31' Fjord port aft profile             | 9  |
| 31' Fjord starboard aft profile photo1 | 9  |
| 31' Fjord starboard aft profile photo2 | 9  |
| 31' Fjord forward profile              | 9  |
| 31' Fjord aft profile                  | 9  |
| 31' Fjord cockpit enclosure            | 9  |
| 31' Fjord foredeck aft                 | 10 |
| 31' Fjord foredeck                     | 10 |
| 31' Fjord helm photo1                  | 10 |

---

|                              |           |
|------------------------------|-----------|
| 31' Fjord electronics        | 10        |
| 31' Fjord interior photo1    | 10        |
| 31' Fjord interior photo2    | 10        |
| 31' Fjord galley photo1      | 11        |
| 31' Fjord galley photo2      | 11        |
| 31' Fjord refrigerator       | 11        |
| 31' Fjord galley cooktop     | 11        |
| 31' Fjord stateroom photo1   | 11        |
| 31' Fjord stateroom photo2   | 11        |
| 31' Fjord head               | 12        |
| 31' Fjord engine compartment | 12        |
| <b>CONTACTS</b>              | <b>13</b> |
| Contact details              | 13        |
| Telephones                   | 13        |
| Office hours                 | 13        |
| Address                      | 13        |

---

# SPECIFICATIONS

---

## Overview

---

Unique Euro Styling! Twin Volvo AQ--31D turbo I/O diesels 138 HP each. A European design with minimalist Scandinavian style teak interior. You will not find another vessel just like this at your marina or on the hook. She has a salon/stateroom with a round teak table that converts to a queen bed. Her separate stateroom has easy access to the head, vanity and shower. You'll have plenty of space to cruise, entertain and fish. Little Stormy sports quality Norwegian craftsmanship throughout. You'll have excellent access to the engines below the aft deck.

## Basic Information

---

**Category:** Cruiser

**Sub Category:** open

**Model Year:** 1987

**Year Built:** 1987

**Country:** United States

## Dimensions

---

**LOA:** 31' 0" (9.45m)

**Beam:** 10' 5" (3.17m)

**Min Draft:** 3' 0" (0.91m)

**Max Draft:** 3' 0" (0.91m)

## Speed, Capacities and Weight

---

**Cruise Speed:** 17 Kts. (20 MPH)

**Max Speed:** 21 Kts. (24 MPH)

**Displacement:** 6200 Pounds

## Accommodations

---

**Total Cabins:** 1

**Sleeps:** 2

**Total Heads:** 1

---

## Hull and Deck Information

---

**Hull Material:** Fiberglass

## Engine Information

---

**Engines:** 2

**Manufacturer:** Volvo

**Model:** AQ-31D

**Engine Type:** I/O

**Fuel Type:** Diesel

---

## DETAILED INFORMATION

---

### 31' Fjord Overview

---

Unique Euro Styling! Twin Volvo AQ--31D turbo I/O diesels 138 HP each. A European design with minimalist Scandinavian style teak interior. You will not find another vessel just like this at your marina or on the hook. She has a salon/stateroom with a round teak table that converts to a queen bed. Her separate stateroom has easy access to the head, vanity and shower. You'll have plenty of space to cruise, entertain and fish. Little Stormy sports quality Norwegian craftsmanship throughout. You'll have excellent access to the engines below the aft deck.

### 31' Fjord Galley

---

SS sink w/faucet and sprayer

110 Volt 2x burner ceramic flat cook top

Under counter refrigerator w/freezer

1000 Watt Microwave new 2014

4x drawers, large under sink storage, 4x door bulkhead storage compartments

Shurflow 3.0 GPM pressurized fresh water pump

Raritan head

6 Gallon 110 Volt Seaward electric hot water heater

### 31' Fjord Electronics & Entertainment

---

19' Hi-def wired flat screen TV w/DVD

JVC AM-FM Radio cassette w/multiple speakers

Digital VHF Radio w/8' fiberglass antenna

Hawkeye digital depth gauge

Navman tracker color GPS chart plotter

Richie compass

Farina magnaflux electronic compass

---

## 31' Fjord Electrical System

---

30 AMP 120 Volt electrical

50' and 25' 30 AMP power cords

Analog 110 Voltmeter w/reverse polarity indicator

Analog 12 Voltmeter w/switch to select for two battery banks

9x 110 Volt breakers

12 Volt breakers

Trucharge 30 AMP triple bank stage fixed mount battery charger

3x Group 31 AGM marine batteries w/boxes new 2014

---

## 31' Fjord Engine/Mechanical Equipment

---

Twin Volvo AQ-31D Turbo diesels

Fresh water cooled

4x Cylinder 146" CID @ 138 HP

60 Amp Alternators

Volvo duo prop drives w/vectored thrust fuel saving counter rotating props

Teleflex steering w/Volvo shifters and throttles

Bennett trim tabs

---

## 31' Fjord Deck Equipment

---

Smoke & CO2 detectors

10x PDF and throwing ring

6x heavy duty cleats with 1/2 double braid dock lines

6x Fenders w/lines

2x Boat hooks

Flares & portable fire extinguishers

Electric horn

Plow style anchor and anchor rode locker

Swim Platform w/Teak inset & swim ladder

1 and 2 step boarding stairs

4x spare SS propellers & any spare parts

## **Exclusions**

---

Owner's personal belongings.

## **Disclaimer**

---

The Company offers the details of this vessel or yacht in good faith but cannot guarantee or warrant the accuracy of this information nor warrant the condition of the vessel. A buyer should instruct his representatives, agents, or his surveyors, to investigate such details as the buyer desires validated. This vessel or yacht is offered subject to prior sale, price change, or withdrawal without notice.



# PHOTOS

**31' Fjord port aft profile**



**31' Fjord starboard aft profile photo1**



**31' Fjord starboard aft profile photo2**



**31' Fjord forward profile**



**31' Fjord aft profile**



**31' Fjord cockpit enclosure**



31' Fjord foredeck



31' Fjord foredeck aft



31' Fjord helm photo1



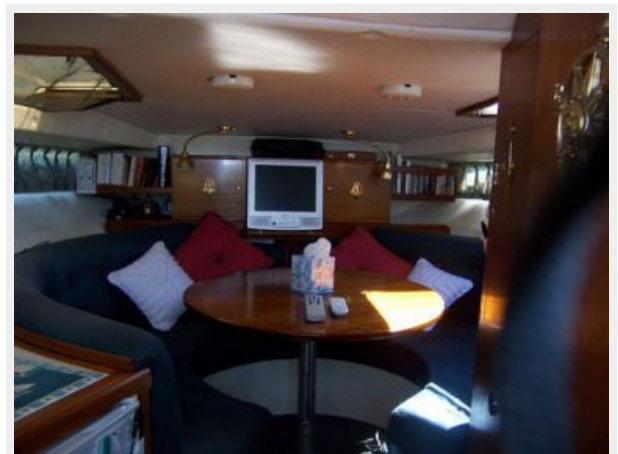
31' Fjord electronics



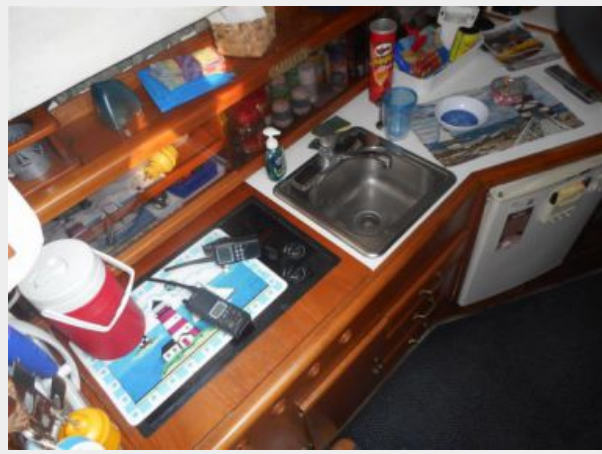
31' Fjord interior photo1



31' Fjord interior photo2



31' Fjord galley photo1



31' Fjord galley photo2



31' Fjord refrigerator



31' Fjord galley cooktop



31' Fjord stateroom photo1



31' Fjord stateroom photo2



**31' Fjord head**



**31' Fjord engine compartment**



# CONTACTS

---

Andrey Shestakov, leading yacht broker of the sales department of Shestakov Yacht Sales Inc. Shestakov Yacht Sales Inc., the official representative of the Miami/Fort Lauderdale FL headquarters.

## Contact details

---

Email: [andrey@shestakovyachtsales.com](mailto:andrey@shestakovyachtsales.com)

Web: [shestakovyachtsales.com/en/](http://shestakovyachtsales.com/en/)

## Telephones

---

USA: +1(954)274-4435

## Office hours

---

Monday – Saturday: **9:00 - 21:00** EDT

Sunday: **closed**

## Address

---



Harbour Towne Marina, 850 NE 3rd St,  
STE 213, Dania, FL 33004