

## NAME RESERVED — NAVIGATOR



**Судостроитель:** NAVIGATOR

**Год постройки:** 2007

**Модель:** Моторная яхта

**Цена:** **ЦЕНА ЯХТЫ ПО ЗАПРОСУ**

**Местонахождение:** United States

**Длина общая:** 54' 0" (16.46m)

**Ширина:** 15' 0" (4.57m)

**Мин. осадка:** 4' 5" (1.35m)

**Макс. осадка:** 4' 7" (1.40m)

**Крейс. скорость:** 19 Kts. (22 MPH)

**Макс. скорость:** 22 Kts. (25 MPH)

Купить **Name Reserved — NAVIGATOR** а также выбрать подходящую вам яхту из нашего каталога яхт вам поможет опытный яхтенный брокер Андрей Шестаков. На сегодняшний день компания **Shestakov Yacht Sales Inc.** имеет большое количество яхт в собственном списке продаж, а также тесно сотрудничает со всеми крупными яхтенными производителями по всему миру.

Для того чтобы купить яхту **Name Reserved — NAVIGATOR** а также проконсультироваться по любому вопросу связанному с покупкой, продажей, чартером яхт позвоните по телефону **+7(918)465-66-44**.

# ОГЛАВЛЕНИЕ

ОГЛАВЛЕНИЕ	2
ХАРАКТЕРИСТИКИ	4
Обзор	4
Основная информация	5
Размеры	5
Скорость, вместимость и масса	5
Размещение	5
Корпус и палуба	6
Информация о двигателе	6
ПОДРОБНОЕ ОПИСАНИЕ	7
Accommodations	7
Pilothouse	7
Salon	7
Galley	8
Fly Bridge	8
Deck Equipment	8
Factory Installed Options and Upgrades	8
Other Features and Equipment	10
Broker's Comments	10
Disclaimer	10
Исключения	11
Отказ от ответственности	11
ФОТОГРАФИИ	12
КОНТАКТЫ	14
Контактная информация	14
Телефоны	14
Время работы	14
Адрес	14



# ХАРАКТЕРИСТИКИ

---

## Обзор

---

Navigator 5400 2007 model with only two owners since new; both of whom have maintained the vessel in excellent condition. All engine maintenance current with new custom exhaust risers fabricated by Marine Exhaust Systems, Inc. of Riviera Beach, and new oil coolers and heat exchangers for both port and starboard engines. New gel batteries for engines and generator, fresh bottom paint, cutlass bearings, rudders packing and four new underwater LED lights.

Three stateroom, two head layout; raised pilothouse motoryacht. Twin 500 hp Volvo D9 diesel engines and 16kw Onan generator. 3000 watt inverter. High gloss cherry interior.

Naval Architect Jule Marshall founded Navigator Yachts in 1987; however he had been building the highly regarded "Californian" line of yachts since the late 1960's.

A hallmark of his designs are hulls that get up on plane quickly with smaller, more economical engines. Another feature is the 360 degree visibility from the helm which allows a couple to operate the vessel without any other assistance; there are two ways to access the bow from the cockpit, either along the narrow port and starboard walkways with grab rails, or going through the salon and out through the sliding door on the starboard side of the pilothouse.

By widening the salon out to nearly the full beam, the design makes the best use of interior space, yet still allows for a narrow walk around deck. A good compromise between practicality and comfort.

The hull is solid fiberglass, no coring material is used in the hull. Another excellent feature of the Navigator is the use of aluminum stringers and beams for floor support, which is much lighter and stronger than wooden members used by most other builders. The insulation is exceptional and affords the quietest boat ride you will ever have!

The auxiliary machinery space is forward of the engine room and separated by a bulkhead and door and this houses the air conditioning units, battery chargers, access to the washer and dryer, and other equipment, as well as a good location for tools boxes and other storage items.

With over 1000 Navigators and Californians built since 1988 these yachts were produced in Southern California until just recently, and are among the most respected U.S. built semi-custom yachts available today. (Californians are the single engine Long Range Cruiser models built by Navigator).

## Основная информация

Тип судна: Моторная яхта	Модельный год: 2007
Год постройки: 2007	Страна: United States
Номер регистрации в береговой охране: 1232598	Верх: Bimini Top
	Открытая палуба мостика: Да

## Размеры

Длина общая: 54' 0" (16.46m)	Ширина: 15' 0" (4.57m)
Мин. осадка: 4' 5" (1.35m)	Макс. осадка: 4' 7" (1.40m)
Трапы: 18' 0" (5.49m)	

## Скорость, вместимость и масса

Крейс. скорость: 19 Kts. (22 MPH)	Крейсерская скорость поворота: 2200 Kts.
Макс. скорость: 22 Kts. (25 MPH)	Макс. скорость поворота: 2500 Kts.
Водоизмещение: 51000 Pounds	Вместимость воды: 170 Gallons
Вместимость сточного бака: 75 Gallons	Объем топливного бака: 750 Gallons

## Размещение

Всего кают: 3	Всего коек: 2
Всего ком. состава: 2	

## Корпус и палуба

Материал корпуса: Fiberglass

Материал палубы: Fiberglass

Отделка корпуса: Aluminum

## Информация о двигателе

Двигатели: 2

Производитель: Volvo

Модель: D9

Тип двигателя: Inboard

Тип топлива: Diesel

# ПОДРОБНОЕ ОПИСАНИЕ

---

## Accommodations

---

The three staterooms are accessed going forward down the stairway on the starboard side of the pilothouse.

The master stateroom is located amidships below the pilothouse and features an athwartship queen sized berth with nightstands and reading lights on either side of the berth. There is ample hanging locker space and drawers along the port side of the cabin as well as drawers below the berth. There is a built in washer and dryer in the aft bulkhead of the master stateroom. There is a 23" LCD TV, stereo, DVD/ Media control center with speakers and radio control. The master features an ensuite bath forward to port with satin nickel finish hardware package, combo shower/ tub with sliding glass doors, and Vacuflush head, In addition to the satin nickel hardware upgrade, there are corian sink counter and floor.

The VIP guest cabin is forward in the bow and features a centerline, walk-around queen berth, overhead hatch with Ocean-aire blackout shade, ample storage port and starboard as well as two hanging lockers.

The third stateroom is along the port side between the master and VIP and features over under twin bunks, hanging locker and drawer storage.

The guest bath is to starboard across from the third stateroom and features the factory upgraded satin nickel hardware package, corian counter and floor, as well as Vacuflush head.

## Pilothouse

---

The raised pilothouse with lower helm station affords excellent visibility and comfort to operate the yacht in any weather conditions. Full Raytheon electronics package and Volvo EVC displays. Bow and Stern Thruster controls. There is an electrically operated Captains chair, L shaped settee to port and folding dinette table. There are wood blinds on the windows and a sliding door to the foredeck on the starboard side. There is a four tread stair way to the flybridge through a sliding door.

## Salon

---

The yacht features Cherry wood veneer with High Gloss Finish.

The salon is entered through double sliding stainless steel doors from the aft deck and has an L shaped settee to starboard with oval shaped coffee table and a second sofa to port. There is a cabinet aft to port from which the electric lift brings up the 32" LCD TV. There are wood blinds throughout the salon, galley and pilothouse. These spaces are also carpeted with neutral tones.

The sofa upholstery is off white. Forward in the salon is the breakfast bar with stools aft of the galley.

## Galley

---

The galley is forward in the salon and features the factory upgraded satin nickel hardware package, double stainless steel sink, side by side refrigerator / freezer, corian breakfast bar with two stools and hardwood floor. There is a built in trash can with corian lid. There is ample drawer storage as well as tambor sliding doors above the counter forward.

There is a second access point to the auxillary machinery space and engine room through the galley floor hatch.

## Fly Bridge

---

The fly bridge features a dual helm seat and full electronics package as well as bow and stern thruster controls and remote windlass control. There is a black Sunbrella bimini top as well as black Sunbrella covers for all the seating and wet bar. The wet bar has an icemaker, refrigerator and electric grill, as well as a sink and storage cabinet. There is a large, triangular shaped table with L shaped seating behind the dual helm seat to Port and another straight bench seat to starboard. The boat deck aft has a Bower 1000 lb. electric davit, RIB cradle with tie downs that carries a 13' Center Console Walker Bay RIB with 25 hp Honda outboard. There is a stamoid cover for the tender.

## Deck Equipment

---

The cockpit features a walk thru transom gate onto the large swim platform. There is a transom shower with hot and cold fresh water. Glendenning cable master, chrome TV/Telephone and Shore Water connections. Swim ladder.

There is a large hatch in the cockpit deck to access the machinery spaces and molded side steps port and starboard to access the deck walk. Double sliding Stainless Steel doors go forward to the salon.

Forward amidships starboard is the door to the pilothouse, and going forward is slightly raised bulwark to the foredeck with stainless steel handrails. Stainless Steel anchor with bow plate and electric windless.

## Factory Installed Options and Upgrades

---

The following items were installed at the factory as optional equipment or upgraded equipment:



Tropical Air Conditioning upgrade; 48,000 btu total

Bow and Stern Thrusters; Sidepower 125T

3000 watt inverter

Dripless shaft seals

Trim Tab upgrade ; 12" dual ram

Engine room blowers; 8" Delta

Glendenning Cablemaster

Central Vacuum System

Davit; Brower 1000 lb. euro style

Frameless windows; Salon and Pilothouse

Salon Door; Double sliding stainless steel

Stainless steel Anchor with bow plate

Bow rail with welded center rung

Boarding lights; Pilothouse sidedeck

Washer and Dryer

Engineroom bulkhead with locking door

Fluorescent engine room lights

Fresh water hose bibb in engine room

Oil Change system

Thru hull upgrade package; stainless steel

Pilothouse helm seat; Flexsteel electric 6 way

Double bridge helm seat

Dual winch remote; bridge and pilothouse

Vac-u-flush heads with waste water monitor

Mufflers to engine; By-pass exhaust

Transom shower, Chrome pier water connection, TV and telephone connection

Bow wash down spigot; fresh water

Swim Ladder; telescoping

## Other Features and Equipment

---

The three stateroom layout on this 54' Navigator features two full size quenns and a third bunkroom with over/under berths. The interior of the yacht is Cherry wood veneer with High Gloss finish. Satin nickel hardware used throughout. Corian floors in both heads as well as corian vanities. GFI electrical outlets in both heads, galley, engine room, and fly bridge. Reading lights in all staterooms and red overhead light at lower helm. Chart lighter at both helms. Lights under radar arch on fly bridge. Full compliment of electronics at both helms including bow and stern thrusters and Volvo EVC control displays. There is a carbon monoxide monitoring system, charcoal water filter, central vacuum system, and Vac-u-flush toilets in both heads. There is a second access to the machinery spaces through the galley floor hatch.

## Broker's Comments

---

The first Navigator I had an opportunity to operate was a 58' 1999 model I delivered from Cape May, NJ to Ft. Lauderdale, twelve years ago, and like many other brokers and boaters on the East Coast I was unfamiliar with, and dismissive of a boat built in the Southern California Desert (of all places!)

Every day on that boat I liked it more and more and within no time I had a whole different appreciation for these exceptionally well thought out, practical, and efficient yachts.

The Navigator has the ability, because of it's hull design, to get up on plane quickly and run at cruising speed very fuel efficiently with much smaller engines than you would typically find on the same overall length yacht.

The engine room is very well insulated so the vessel is one of the quietest you will find, and the fuel tanks are aft of the engines so there is very good access to the outboard side of the engines, which is very important for maintenance and cleanliness.

Now, years later, having sold and delivered a number of Navigators from Rhode Island to the Gulf Coast, they remain one of my favorite yachts and one which I would highly recommend. A buyer could spend a lot more money, and get a lot less boat, with many of the competitors.

## Disclaimer

---

The Company offers the details of this vessel in good faith but cannot guarantee or warrant the accuracy of this information nor warrant the condition of the vessel. A buyer should instruct his agents, or his surveyors, to investigate such details as the buyer desires validated. This vessel is

offered subject to prior sale, price change, or withdrawal without notice.

## Исключения

---

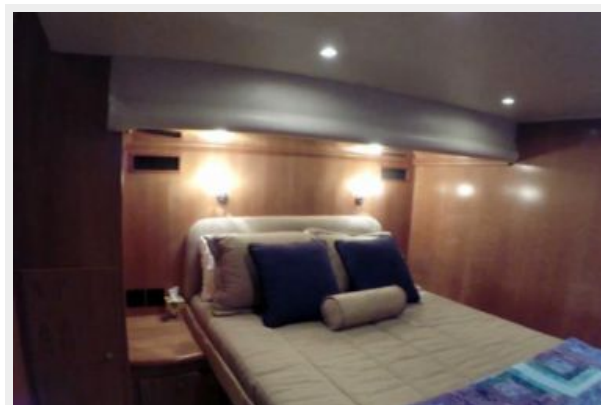
При продаже яхты исключаются личные вещи владельца.

## Отказ от ответственности

---

Компания предоставляет описание судна или яхты добросовестно, но не может гарантировать точность этой информации, а также не ручается за техническое состояние. Покупатель должен проинструктировать своих агентов или оценщиков исследовать представленную информацию более подробно, по собственному желанию. Продажа судна или яхты, изменение цены или снятие с продажи будет происходить без предварительного уведомления.

# ФОТОГРАФИИ





# КОНТАКТЫ

---

Андрей Шестаков (Andrey Shestakov) – ведущий яхтенный брокер отдела продаж яхт и судов компании Shestakov Yacht Sales Inc. Официальный представитель Shestakov Yacht Sales Inc. для русскоговорящих клиентов в центральном офисе компании в Майами/Форт Лодердейл/Флорида/США.

## Контактная информация

---

Email: **andrey@shestakovyachtsales.com**

Web: **[shestakovyachtsales.com](http://shestakovyachtsales.com)**

## Телефоны

---

Краснодарский край: **+7(918)465-66-44**

США, Майами, Флорида: **+1(954)274-4435**

## Время работы

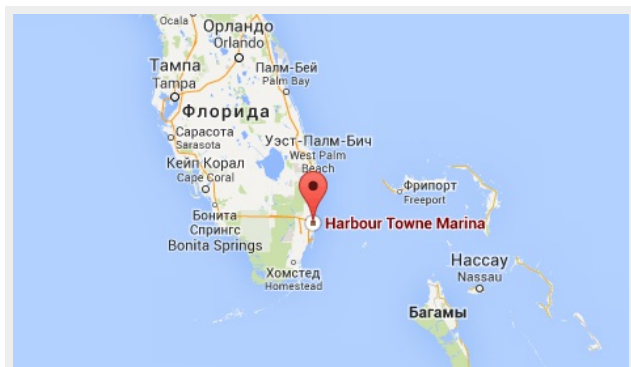
---

Понедельник – Суббота: **9:00 - 21:00**  
EDT

Воскресенье: **Закрито**

## Адрес

---



Harbour Towne Marina, 850 NE 3rd St,  
STE 213, Dania, FL 33004