

PYEWACKET — GRAND BANKS



Builder: GRAND BANKS

Year Built: 1982

Model: Trawler

Price: PRICE ON APPLICATION

Location: United States

LOA: 42' 7" (12.98m)

Beam: 13' 7" (4.14m)

Max Draft: 4' 2" (1.27m)

Cruise Speed: 8 Kts. (9 MPH)

Max Speed: 10 Kts. (12 MPH)

Our experienced yacht broker, Andrey Shestakov, will help you choose and buy a yacht that best suits your needs **Pyewacket — GRAND BANKS** from our catalogue. Presently, at Shestakov Yacht Sales Inc., we have a wide variety of yachts available on our sale's list. We also work in close contact with all the big yacht manufacturers from all over the world.

If you would like to buy a yacht **Pyewacket — GRAND BANKS** or would like help answering any questions concerning purchasing, selling or chartering a yacht, please call **+1(954)274-4435**

TABLE OF CONTENTS

TABLE OF CONTENTS	2
SPECIFICATIONS	3
Overview	3
Basic Information	3
Dimensions	3
Speed, Capacities and Weight	3
Accommodations	3
Hull and Deck Information	4
Engine Information	4
DETAILED INFORMATION	5
Overview	5
Electronics & Equipment	5
Exclusions	5
Disclaimer	5
PHOTOS	6
CONTACTS	19
Contact details	19
Telephones	19
Office hours	19
Address	19

SPECIFICATIONS

Overview

X Charter boat for sale at wholesale , sold as is where is. Only 3850 original hours. This boat looks and runs well, don't let the charter boat scare you. If you are handy and want a great deal come look at her.

Basic Information

Category: Trawler

Model Year: 1982

Year Built: 1982

Country: United States

Vessel Top: Bimini Top

Cockpit: Yes

Dimensions

LOA: 42' 7" (12.98m)

Beam: 13' 7" (4.14m)

Max Draft: 4' 2" (1.27m)

Clearance: 22' 6" (6.86m)

Speed, Capacities and Weight

Cruise Speed: 8 Kts. (9 MPH)

Max Speed: 10 Kts. (12 MPH)

Displacement: 37400 Pounds

Water Capacity: 270 Gallons

Holding Tank: 50 Gallons

Fuel Capacity: 600 Gallons

Accommodations

Total Cabins: 2

Hull and Deck Information

Hull Material: Fiberglass

Deck Material: Steel

Hull Configuration: Full Displacement

Hull Finish: Plastic

Engine Information

Engines: 2

Manufacturer: Ford Lehman

Model: 135

Engine Type: Inboard

Fuel Type: Diesel

DETAILED INFORMATION

Overview

X Charter boat for sale at wholesale , sold as is where is. Only 3850 original hours. This boat looks and runs well, don't let the charter boat scare you. If you are handy and want a great deal come look at her.

Electronics & Equipment

Electronics: VHF Log-speedometer GPS Plotter Radio Autopilot TV set Depthsounder
Inside Equipment: Oven Refrigerator Marine head Battery charger Electric bilge pump Air conditioning Microwave oven
Electrical Equipment: Generator Shore power inlet Electrical Circuit: 110V
Outside Equipment/Extras: Teak sidedecks Teak cockpit Swimming ladder Electric windlass
Covers: Bimini Top

Exclusions

Owner's personal belongings.

Disclaimer

The Company offers the details of this vessel or yacht in good faith but cannot guarantee or warrant the accuracy of this information nor warrant the condition of the vessel. A buyer should instruct his representatives, agents, or his surveyors, to investigate such details as the buyer desires validated. This vessel or yacht is offered subject to prior sale, price change, or withdrawal without notice.

PHOTOS



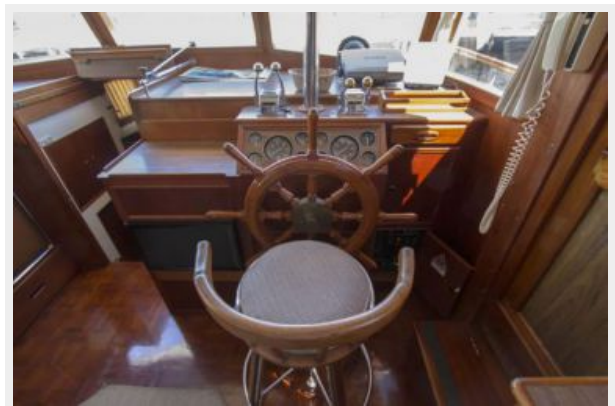
























CONTACTS

Andrey Shestakov, leading yacht broker of the sales department of Shestakov Yacht Sales Inc. Shestakov Yacht Sales Inc., the official representative of the Miami/Fort Lauderdale FL headquarters.

Contact details

Email: andrey@shestakovyachtsales.com

Web: shestakovyachtsales.com/en/

Telephones

USA: +1(954)274-4435

Office hours

Monday – Saturday: **9:00 - 21:00** EDT

Sunday: **closed**

Address



Harbour Towne Marina, 850 NE 3rd St,
STE 213, Dania, FL 33004