

RAFFLES — GRAND BANKS



Builder: GRAND BANKS

Year Built: 1985

Model: Cruiser

Price: PRICE ON APPLICATION

Location: United States

LOA: 42' 0" (12.80m)

Beam: 13' 4" (4.06m)

Max Draft: 4' 2" (1.27m)

Cruise Speed: 14 Kts. (16 MPH)

Max Speed: 18 Kts. (21 MPH)

Our experienced yacht broker, Andrey Shestakov, will help you choose and buy a yacht that best suits your needs Raffles — GRAND BANKS from our catalogue. Presently, at Shestakov Yacht Sales Inc., we have a wide variety of yachts available on our sale's list. We also work in close contact with all the big yacht manufacturers from all over the world.

If you would like to buy a yacht Raffles — GRAND BANKS or would like help answering any questions concerning purchasing, selling or chartering a yacht, please call +1(954)274-4435

TABLE OF CONTENTS

TABLE OF CONTENTS	2
SPECIFICATIONS	3
Overview	3
Basic Information	3
Dimensions	3
Speed, Capacities and Weight	3
Accommodations	3
Hull and Deck Information	4
Engine Information	4
DETAILED INFORMATION	5
Overview	5
Electronics & Equipment	5
Exclusions	5
Disclaimer	5
PHOTOS	6
CONTACTS	18
Contact details	18
Telephones	18
Office hours	18
Address	18

SPECIFICATIONS

Overview

This is a very unique Grand Bank sedan bridge, (sport fisherman) that shows very well and ready for new ownership. Fuel tanks have been replaced with aluminum.

Basic Information

Category: Cruiser	Sub Category: Sport Cruiser
Model Year: 1985	Year Built: 1985
Country: United States	Vessel Top: Bimini Top
Fly Bridge: Yes	Cockpit: Yes

Dimensions

LOA: 42' 0" (12.80m)	Beam: 13' 4" (4.06m)
Max Draft: 4' 2" (1.27m)	

Speed, Capacities and Weight

Cruise Speed: 14 Kts. (16 MPH)	Max Speed: 18 Kts. (21 MPH)
Displacement: 34000 Pounds	Water Capacity: 265 Gallons
Holding Tank: 50 Gallons	Fuel Capacity: 600 Gallons

Accommodations

Total Cabins: 2	Total Berths: 2
Total Heads: 1	

Hull and Deck Information

Hull Material: Fiberglass

Deck Material: Teak

Hull Configuration: Full Displacement

Hull Finish: Steel

Engine Information

Engines: 2

Manufacturer: Caterpillar

Model: 3208

Engine Type: Inboard

Fuel Type: Diesel

DETAILED INFORMATION

Overview

This is a very unique Grand Bank sedan bridge, (sport fisherman) that shows very well and ready for new ownership. Fuel tanks have been replaced with aluminum.

Electronics & Equipment

Electronics: Autopilot - Com Nav TV set Plotter - Garmin Depthsounder - Data marine Compass Radar - Raytheon RHO VHF - ICOM Radio - Jenson stereo GPS **Inside Equipment:** Oven - Princess AC electric Marine head - Teco Marine Deep freezer - Sub Zero Electric bilge pump Manual bilge pump Hot water Battery charger Microwave oven - Sharp Air conditioning **Electrical Equipment:** Generator - Westerbeke 8KW 2143 Shore power inlet Electrical Circuit: 110V **Outside Equipment/Extras:** Teak cockpit Teak sidedecks Swimming ladder Electric windlass **Covers:** Bimini Top

Exclusions

Owner's personal belongings.

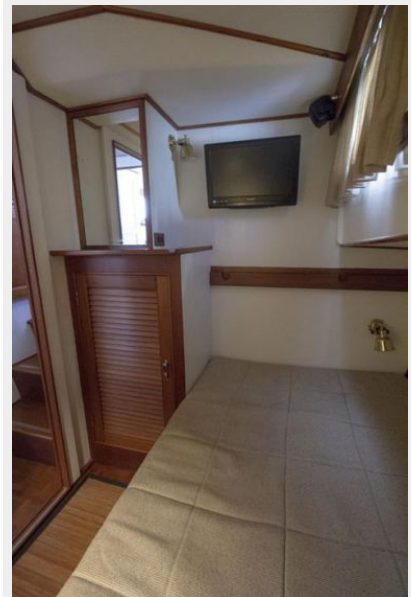
Disclaimer

The Company offers the details of this vessel or yacht in good faith but cannot guarantee or warrant the accuracy of this information nor warrant the condition of the vessel. A buyer should instruct his representatives, agents, or his surveyors, to investigate such details as the buyer desires validated. This vessel or yacht is offered subject to prior sale, price change, or withdrawal without notice.

PHOTOS











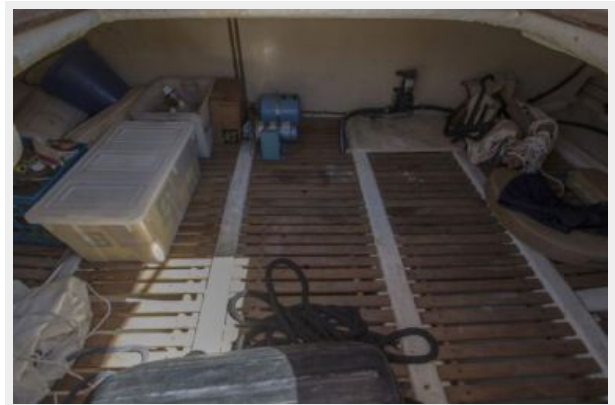
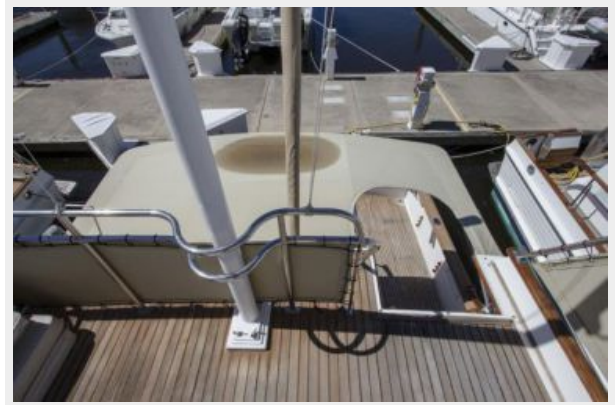














CONTACTS

Andrey Shestakov, leading yacht broker of the sales department of Shestakov Yacht Sales Inc. Shestakov Yacht Sales Inc., the official representative of the Miami/Fort Lauderdale FL headquarters.

Contact details

Email: andrey@shestakovyachtsales.com

Web: shestakovyachtsales.com/en/

Telephones

USA: +1(954)274-4435

Office hours

Monday – Saturday: **9:00 - 21:00** EDT

Sunday: **closed**

Address



Harbour Towne Marina, 850 NE 3rd St,
STE 213, Dania, FL 33004