

PURITAN — AB



Builder: [AB](#)

Year Built: 1931

Model: Classic Yacht

Price: PRICE ON APPLICATION

Location: France

LOA: 120' 0" (36.58m)

Beam: 22' 10" (6.96m)

Min Draft: 9' 0" (2.74m)

Max Draft: 9' 0" (2.74m)

Cruise Speed: 7 Kts. (8 MPH)

Max Speed: 9 Kts. (10 MPH)

Our experienced yacht broker, Andrey Shestakov, will help you choose and buy a yacht that best suits your needs **PURITAN — AB** from our catalogue. Presently, at Shestakov Yacht Sales Inc., we have a wide variety of yachts available on our sale's list. We also work in close contact with all the big yacht manufacturers from all over the world.

If you would like to buy a yacht **PURITAN — AB** or would like help answering any questions concerning purchasing, selling or chartering a yacht, please call **+1(954)274-4435**

TABLE OF CONTENTS

TABLE OF CONTENTS	2
SPECIFICATIONS	3
Overview	3
Basic Information	3
Dimensions	3
Speed, Capacities and Weight	3
Accommodations	3
Hull and Deck Information	4
Engine Information	4
PHOTOS	5
CONTACTS	18
Contact details	18
Telephones	18
Office hours	18
Address	18

SPECIFICATIONS

Overview

Puritan is one of the most original and carefully restored great sailing yachts of the past. She is also a true blue water cruiser thanks to her extremely strong and reliable construction, and her original design, a testament to Alden's genius. Her shape and her look fulfil and gratify any classic yacht lover's desire of beauty and harmony and John Alden's powerful lines are a statement of seaworthiness. The elegance and charm of her interior and the warm atmosphere enhanced by the light Oregon pine finish makes any guest feel at ease and welcome, uncluttered by unnecessary additions or frills. One of the great yachts of all time is now for sale, needing some attention to her systems, sails and technical aspects, but certainly worth the investment.

Basic Information

Category: Classic Yacht

Model Year: 1931

Year Built: 1931

Country: France

Dimensions

LOA: 120' 0" (36.58m)

Beam: 22' 10" (6.96m)

Min Draft: 9' 0" (2.74m)

Max Draft: 9' 0" (2.74m)

Speed, Capacities and Weight

Cruise Speed: 7 Kts. (8 MPH)

Cruise Speed RPM: 1550 Kts.

Max Speed: 9 Kts. (10 MPH)

Gross Tonnage: 180 Pounds

Water Capacity: 792 Gallons

Fuel Capacity: 792 Gallons

Accommodations

Total Cabins: 4

Sleeps: 8

Hull and Deck Information

Hull Material: Steel

Exterior Designer: Electric Boat Company
of New London,

Engine Information

Manufacturer: Detroit Diesel

Model: 180 Hp Detroit Diesel 8V 71

Fuel Type: Diesel

PHOTOS



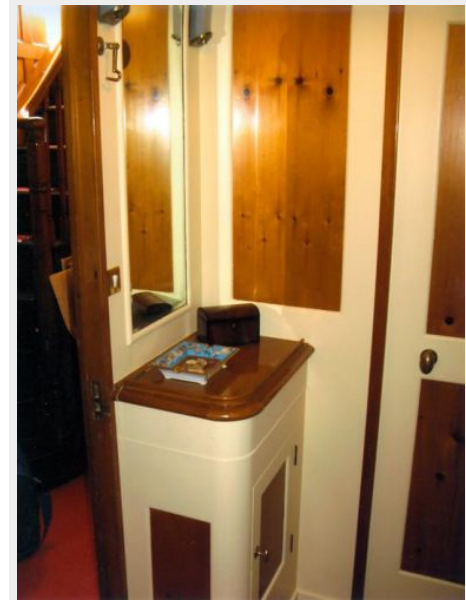




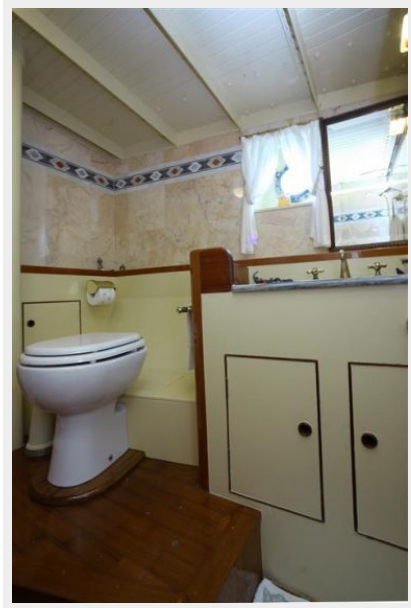




















CONTACTS

Andrey Shestakov, leading yacht broker of the sales department of Shestakov Yacht Sales Inc. Shestakov Yacht Sales Inc., the official representative of the Miami/Fort Lauderdale FL headquarters.

Contact details

Email: andrey@shestakovyachtsales.com

Web: shestakovyachtsales.com/en/

Telephones

USA: +1(954)274-4435

Office hours

Monday – Saturday: **9:00 - 21:00** EDT

Sunday: **closed**

Address



Harbour Towne Marina, 850 NE 3rd St,
STE 213, Dania, FL 33004