

SCOTT FREE — NORTHCOAST YACHTS



Builder: NORTHCOAST YACHTS

Year Built: 2000

Model: Motor Yacht

Price: PRICE ON APPLICATION

Location: United States

LOA: 120' 0" (36.58m)

Beam: 25' 0" (7.62m)

Min Draft: 6' 6" (1.98m)

Cruise Speed: 16 Kts. (18 MPH)

Max Speed: 22 Kts. (25 MPH)

Our experienced yacht broker, Andrey Shestakov, will help you choose and buy a yacht that best suits your needs **SCOTT FREE — NORTHCOAST YACHTS** from our catalogue. Presently, at Shestakov Yacht Sales Inc., we have a wide variety of yachts available on our sale's list. We also work in close contact with all the big yacht manufacturers from all over the world.

If you would like to buy a yacht **SCOTT FREE — NORTHCOAST YACHTS** or would like help answering any questions concerning purchasing, selling or chartering a yacht, please call **+1(954)274-4435**

TABLE OF CONTENTS

TABLE OF CONTENTS	2
SPECIFICATIONS	6
Overview	6
Basic Information	6
Dimensions	6
Speed, Capacities and Weight	6
Accommodations	6
Hull and Deck Information	7
Engine Information	7
DETAILED INFORMATION	8
Accommodations	8
Mechanical Equipment	9
Electronics & Navigation	10
Entertainment	11
Galley/Laundry	12
Tender/Dive Equipment	12
Deck Equipment	12
Safety & Fire Protection	13
Sundeck	14
Swim Platform	14
Exclusions	14
Disclaimer	14
PHOTOS	15
Forward Deck	15
Profile 2	15
Sunpad on Forward Deck	15
Walkway to Forward Deck	15
Walkway to Forward Deck	15

Forward Deck	15
Side Deck	16
Side Deck	16
Side Deck	16
Swim Platform/Lounging Area	16
Swim Platform/Lounging Area	16
Swim Platform/Lounging Area	16
Aft Deck	17
Aft Deck Dining	17
Aft Deck Dining	17
Aft Deck Dining	17
Stairs to Upper Deck	17
Upper Deck	17
Upper Deck	18
Upper Deck / Helm	18
Upper Deck	18
Helm	18
Upper Deck	19
Upper Deck	19
Upper Deck Bar	19
Upper Deck	19
Upper Deck	19
Upper Deck/Firepit	19
Day Head	20
Upper Deck/Firepit	20
Pilothouse	20
Pilothouse	20
Pilothouse	21
Pilothouse	21

Salon/Bar	21
Salon	21
Salon	21
Salon	21
Salon	22
Salon	22
Salon/Bar	22
Salon	22
Dining	22
Dining	22
Dining	23
Country Kitchen	23
Country Kitchen	23
Country Kitchen	23
Country Kitchen	23
Dinette	23
Dinette	24
Foyer	24
Companionway	24
Forward Guest Stateroom	24
Forward Guest Stateroom	25
Forward Head	25
Master Stateroom	25
Master Stateroom	25
Master Stateroom	25
Master Stateroom	25
Master Stateroom	26
Master Stateroom	26
Master Stateroom Head	26

Master Stateroom Head	26
Master Stateroom Head	27
Master Stateroom Head	27
Master Stateroom Head	27
Port Guest Stateroom	27
Port Guest Stateroom Head	28
Port Guest Stateroom	28
Starboard Guest Stateroom	28
Starboard Guest Stateroom	28
Starboard Guest Stateroom Head	29
Starboard Guest Stateroom	29
Engine Room	29
Engine Room	29
Engine Room	29
Engine Room	29
CONTACTS	30
Contact details	30
Telephones	30
Office hours	30
Address	30

SPECIFICATIONS

Overview

This is a perfect opportunity for someone to buy a great family yacht. SCOTT FREE gives you a feeling of being on a much larger yacht. Huge country kitchen, full beam salon and dining area. Both generators were totally rebuilt in 8/14. She is very economical at 13.5kts. Built for the west coast seas, she rides very stable, separate VIP stateroom. **BRING OFFERS! OWNER MOTIVATED!**

Basic Information

Category: Motor Yacht

Sub Category: Pilothouse

Model Year: 2000

Year Built: 2000

Country: United States

Coast Guard #: 733356

Dimensions

LOA: 120' 0" (36.58m)

Beam: 25' 0" (7.62m)

Min Draft: 6' 6" (1.98m)

Speed, Capacities and Weight

Cruise Speed: 16 Kts. (18 MPH)

Max Speed: 22 Kts. (25 MPH)

Water Capacity: 1000 Gallons

Fuel Capacity: 8300 Gallons

Accommodations

Total Cabins: 4

Total Heads: 5

Crew Cabin: 1

Crew Heads: 1

Hull and Deck Information

Hull Material: Composite

Hull Color: White

Engine Information

Engines: 2

Manufacturer: Detroit Diesel/MTU

Model: 16V2000

Engine Type: Inboard

Fuel Type: Diesel

DETAILED INFORMATION

Accommodations

- SCOTT FREE has a custom interior appointed with light ash woods and earth tones by Jonathan Quinn Barnett of Seattle, Washington
- Main salon is Chestnut stained Ash wood, accented with Cherry toned Mahogany wood
- Interior décor features leathers, granite, marble, and commissioned art
- 46" 3DTV in salon has a Surround Sound System and touch pad remotes
- Forward from the aft deck, is a roomy Settee, 2 tables and 2 chairs with access to the Salon and Flybridge
- Salon has comfortable bar and lounge area followed by formal dining forward
- Pilothouse is accessed up a staircase, aft of galley
- Galley has spacious U-shaped Settee and two tables looking aft onto the Galley and countertop with Bar seating
- Forward & down is VIP Suite with Ensuite Bath. Lower deck accessed through the staircase just aft of the Galley, offers two guest suites aft and the master forward
- Crew area below and aft of the engine room for maximum privacy, accessed either from the Aft deck or the swim platform
- Flybridge has fiberglass hardtop with retractable sunroof and 62" Plasma TV recessed in the overhead above Helm Station
- Transom has 2 1/2' extension housing fully hydraulic set of stairs and underwater platform for scuba diving and personal watercraft access.
- Teak decks on Flybridge, aft, side and forward.
- Underwater lights located on the swim platform
- 8 Guests accommodated in 4 Staterooms
- Master Cabin located below deck amidship. Décor in beige, cranberry and taupe.
- Master Cabin Settee is Starboard with Closet to Port, full-sized dresser
- Forward is His and Hers Bath with Glassed-in Shower, Sink/Vanity with Cabinets below
- Make-up vanity, tub with Jacuzzi jet and his and her toilets
- Bone Travertine, Black Corian and Ash Woodwork finished with gold fixtures and accessories
- Emergency/Convenience Lighting throughout the Master Suite can be controlled bedside
- VIP Suite is below deck forward of the galley and down a few steps
- The Head has Dual Sinks, Corian counter, gold fixtures & accessories
- Jacuzzi bath / shower combination
- Guest Stateroom located below deck port with Queen berth
- Ample cabinetry storage below beds, built-in dresser on Port side
- Ensuite head with Corian sink/counter top finished with gold fixtures & accessories. This head offers a shower stall.
- Final Guest Stateroom (located below deck amidship starboard) is a mirror of the port guest stateroom and also offers a queen berth

Mechanical Equipment

Generators: Port - 45 hrs. Starboard - 11 hrs. Rebuilt 8/14

Main Engines

Engine Type: MTU DDC 2000 Series V16 2686 kW

Gearboxes for Main Engines: DD Model # DD-6619SC Reversing Gears (ratio 2.72:1)

Air Conditioning

- Aqua-Air Model # A15-3-1VD raw water/chilled water

Tonnage: 180,000 BTU or 15 tons

Handling Units: 14 x AQH-08C fan coil 800 CFM

Other Machinery

Watermakers: 2 x Sea Recovery 1500 GPD water makers

Trim Tabs/Stabilizers: Naiad Multi Sea 2 Roll Stabilizer

Bow Thruster:

- Wesmar Hydraulic bow thruster driven by Parker PTO driven off the front of each generator via a 24-volt DC electric actuated clutch

Steering System:

- Power assisted driven by wheel driven primary pump off starboard main engine. Emergency steering is electric hydraulic power pack with reservoir. The steering gear is in the swim platform bilge area.

Fuel Separator & Filtration:

- Specialty Fuel Systems-SFS 1000-OBP Custom
- On Board Fuel Polishing Unit

Sewage System:

- 300 gallon main black water tank with Edson diaphragm pump. 50 gallon crew black water tank with Jabsco diaphragm pump.

Fresh Water System:

- 800 gallon water tank with filtration and 2 Headhunter pressure pumps and expansion tanks

Bilge Water Filtration:

- Bilge pump strainers protected by oil soaking pads

Fuel Capacity:

- 8160 US gallons diesel, 100 US gallon gasoline

Water Capacity:

- 800 US gallons

Lube Oil Capacity:

- 100 US gallons

Waste Oil Capacity:

- 100 U.S. gallons

Waste Water:

- 300 US gallon main gray water tank with Edson diaphragm pump. 50 US gallon crew gray water tank with Jabsco diaphragm pump.

Electronics & Navigation

Kahlenberg M-511 Whistle Control NAIAD Multisea II Stabilizers

2 - KEP Screens

2 - ACR Spotlights

2 Furuno Radars

Furuno AIS

Furuno GPS Navigator

Furuno GP33 Anshutz Pilotstar D Auto Pilot

B & G Gauges

2 Icom VHF Radios

Nobeltec Chart Plotter

SATcom:

- KVH Vsat

Telephone System:

- Dect 6.0 answering machine with 6 x portable phone handsets connected to KVH Vsat
- Panasonic PABX, cabling and outlets still installed.

VHF Fixed:

- 1 x Standard Horizon
- 1 x Icom ICM422 with DSC capability

VHF Handheld:

- 5 x Standard Horizon

Intercom:

- 6 x portable V-Sat phone handsets with intercom capability

Entertainment

Video Equipment

Central Ship's Video: Control 4 movie server

Televisions:

- Salon - Samsung 46" 3D
- Sundeck - 62" Runco Widevision
- Country Kitchen - Samsung 40" and Insignia 26"
- Master - Sharp 32"
- Port and Starboard Staterooms - Insignia 19" TV/DVD
- VIP - Insignia 26" TV/DVD
- 3 x crew quarters - Insignia 18" TV/DVD

DVD Players:

- Salon - Samsung 3D Blu-ray
- Pioneer multizone dvd/DiVX/HDMI player
- Wheelhouse - Sony Blu-ray
- Master - Sony Blu-ray

Audio Equipment:

- Central Ship's Audio: Control 4 music server

Stereos:

- Salon-iPod dock
- Master-iPod dock
- Galley-iPod dock
- Wheelhouse-iPod dock

Galley/Laundry

- Kitchen Aid 5 burner cooktop
- Kitchen Aid Range
- Kitchen Aid convection oven
- Kenmore Microwave
- SubZero 690 Refrigerator
- SubZero 690 Freezer
- Whirlpool Dishwasher
- Kitchen Air Trash Compactor

Icemaker:

- Galley
- Flybridge
- Salon-Uline icemaker

Other:

- Salon, Electronics Room, Master and Flybridge-bar fridge, Electronics Room- deep freezer

Main Laundry Equipment:

- Crew Area-Whirlpool Duet Sport stackable washer/dryer
- Stateroom foyer-GE Spacemaker stackable washer/dryer

Tender/Dive Equipment

- 15' Novurania with 90hp Yamaha

Dive Compressor:

- Brownies Dive Compressor

Deck Equipment

Anchor Windlass:

- Maxwell 4500

Aft Warping Capstans:

- 2 x Maxwell 2200

Anchors:

- 180 kg Plow and Fortress FX 125 kg stowable anchor

Anchor Chain:

- 360' of 5/8 galvanized chain

Boat Crane and Davits:

- Marquip double telescoping 1,785 lb rated davit

Accommodation Ladders:

- Crew passage to aft deck (crew escape)

Safety & Fire Protection

Security Equipment**CCTV System:**

- KalatelCameras: 5
- Monitors: 1
- Ship's Safe: 5

Fire Fighting Equipment

- Fire Control System: 1
- Fixed Halon System: 1
- Fire Extinguishers: 20
- Seawater Fire Fighting Stations: 2

Safety Equipment

- Life Rafts: 2 x Givens 8 person
- Life Rings: 2
- EPIRBS: 2
- Flares: 20

- Medical Equipment: Complies with up to 60nm from the coast

Sundeck

- 62' Retractable Runco Widevision movie screen
- Retractable sunroof
- BBQ grill
- Fire pit
- Lounge furniture

Swim Platform

- Large, retractable in-water swim platform ideal for snorkeling and swimming
- Underwater lights

Exclusions

Owner's personal belongings.

Disclaimer

The Company offers the details of this vessel or yacht in good faith but cannot guarantee or warrant the accuracy of this information nor warrant the condition of the vessel. A buyer should instruct his representatives, agents, or his surveyors, to investigate such details as the buyer desires validated. This vessel or yacht is offered subject to prior sale, price change, or withdrawal without notice.

PHOTOS

Profile 2



Forward Deck



Sunpad on Forward Deck



Walkway to Forward Deck



Walkway to Forward Deck



Forward Deck



Side Deck



Side Deck



Side Deck



Swim Platform/Lounging Area



Swim Platform/Lounging Area



Swim Platform/Lounging Area



Aft Deck



Aft Deck Dining



Aft Deck Dining



Aft Deck Dining



Stairs to Upper Deck



Upper Deck



Upper Deck



Upper Deck / Helm



Upper Deck



Helm



Upper Deck



Upper Deck



Upper Deck Bar



Upper Deck



Upper Deck



Upper Deck/Firepit



Upper Deck/Firepit



Day Head



Pilothouse



Pilothouse



Pilothouse



Pilothouse



Salon/Bar



Salon



Salon



Salon



Salon



Salon



Salon/Bar



Salon



Dining



Dining



Dining



Country Kitchen



Country Kitchen



Country Kitchen



Country Kitchen



Dinette



Dinette



Foyer



Companionway



Forward Guest Stateroom



Forward Guest Stateroom



Forward Head



Master Stateroom



Master Stateroom



Master Stateroom



Master Stateroom



Master Stateroom



Master Stateroom



Master Stateroom Head



Master Stateroom Head



Master Stateroom Head



Master Stateroom Head



Master Stateroom Head



Port Guest Stateroom



Port Guest Stateroom



Port Guest Stateroom Head



Starboard Guest Stateroom



Starboard Guest Stateroom



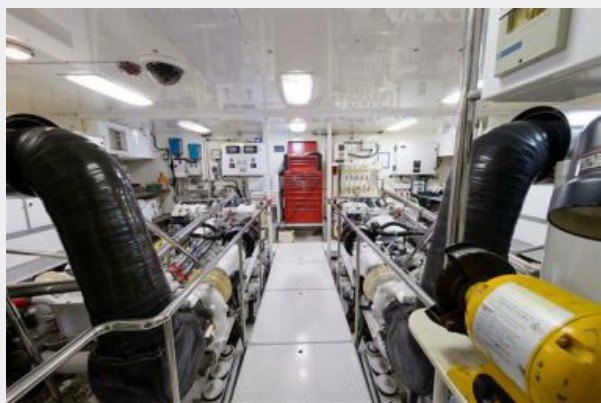
Starboard Guest Stateroom Head

Starboard Guest Stateroom



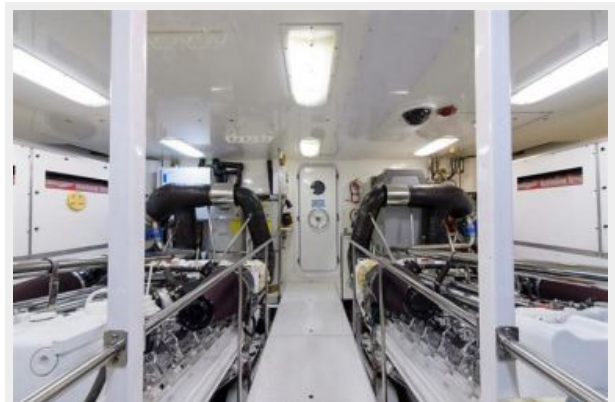
Engine Room

Engine Room



Engine Room

Engine Room



CONTACTS

Andrey Shestakov, leading yacht broker of the sales department of Shestakov Yacht Sales Inc. Shestakov Yacht Sales Inc., the official representative of the Miami/Fort Lauderdale FL headquarters.

Contact details

Email: andrey@shestakovyachtsales.com

Web: shestakovyachtsales.com/en/

Telephones

USA: +1(954)274-4435

Office hours

Monday – Saturday: **9:00 - 21:00** EDT

Sunday: **closed**

Address



Harbour Towne Marina, 850 NE 3rd St,
STE 213, Dania, FL 33004