

## BANYAN — PALMER JOHNSON



**Builder:** PALMER JOHNSON

**Year Built:** 1980

**Model:** Motor Yacht

**Price:** PRICE ON APPLICATION

**Location:** United States

**LOA:** 102' 0" (31.09m)

**Beam:** 20' 0" (6.10m)

**Max Draft:** 6' 6" (1.98m)

**Cruise Speed:** 15 Kts. (17 MPH)

**Max Speed:** 20 Kts. (23 MPH)

Our experienced yacht broker, Andrey Shestakov, will help you choose and buy a yacht that best suits your needs **Banyan — PALMER JOHNSON** from our catalogue. Presently, at Shestakov Yacht Sales Inc., we have a wide variety of yachts available on our sale's list. We also work in close contact with all the big yacht manufacturers from all over the world.

If you would like to buy a yacht **Banyan — PALMER JOHNSON** or would like help answering any questions concerning purchasing, selling or chartering a yacht, please call **+1(954)274-4435**

# TABLE OF CONTENTS

TABLE OF CONTENTS	2
SPECIFICATIONS	5
Overview	5
Basic Information	5
Dimensions	5
Speed, Capacities and Weight	5
Accommodations	6
Hull and Deck Information	6
Engine Information	6
DETAILED INFORMATION	7
Accommodations	7
Main Salon	7
Galley	7
Master Stateroom	7
Navigation and Electronics	8
Wheelhouse	8
Crews' Quarters	8
Engine and Mechanical Equipment	8
Electrical system	9
Deck and Hull	9
Aft Deck	9
Lazarette	9
Cockpit	9
Flybridge/Boat Deck	10
Tankage	10
Fire and Safety Equipment	10
Additional Equipment	10
Remarks	10

Exclusions	11
Exclusions	11
Disclaimer	11
PHOTOS	12
Aft Deck Facing Forward	12
Aft Deck - Wet Bar & Ice maker	12
Aft Deck - Facing forward	12
Aft Deck Hi-Lo Dining Table	12
Main Salon - Looking Aft	12
Main Salon - Starboard Side	12
Main Salon - Facing Aft	13
Companionway Cabinet Divider	13
Main Salon - Dining Table - Forward	13
Main Salon Forward Cabinets	13
Galley	13
Galley Aft View	13
Wheelhouse	14
Wheelhouse Console	14
Master Stateroom	14
Master Stateroom "Her" Bathroom	14
Guest Double Berth Stateroom Starboard Side	14
Guest En-Suite Bathroom	14
Guest Twin Berth Stateroom Portside	15
Guest En-Suite Bathroom	15
Crew & Engine Room Companionway	15
Crew Dinette	15
Captain's Cabin	15
Crew Cabin	15
Engine Room Looking Aft	16

Engine Room Looking Aft	16
Port Sidedeck	16
Flybridge Helm Station	16
Flybridge Seating Area	16
Flybridge Dining Table	16
Boat Deck - Aft Seating Area	17
Foredeck	17
Bow	17
Anchor Windlass	17
Cockpit	17
Lazarette	17
CONTACTS	19
Contact details	19
Telephones	19
Office hours	19
Address	19

# SPECIFICATIONS

## Overview

**MAJOR PRICE REDUCTION!** Complete interior and exterior refurbishment maintaining its pedigree. The vessel was fully repainted after a 14' extension that provided a cockpit, lazarette storage area and BBQ. Also part of the refit was the installation of new main engines, replacement of all electrical, electronics, audio visual, air conditioning and heating, plumbing, steering, bow and stern thrusters, and anchor system in 2009.

## Basic Information

**Category:** Motor Yacht

**Sub Category:** Cockpit

**Model Year:** 1980

**Year Built:** 1980

**Refit Year:** 2009

**Country:** United States

**Vessel Top:** Hardtop

**Fly Bridge:** Yes

**Cockpit:** Yes

## Dimensions

**LOA:** 102' 0" (31.09m)

**Beam:** 20' 0" (6.10m)

**Max Draft:** 6' 6" (1.98m)

## Speed, Capacities and Weight

**Cruise Speed:** 15 Kts. (17 MPH)

**Cruise Speed Range:** 1100

**Max Speed:** 20 Kts. (23 MPH)

**Gross Tonnage:** 109 Pounds

**Water Capacity:** 1000 Gallons

**Holding Tank:** 660 Gallons

**Fuel Capacity:** 3700 Gallons

## Accommodations

---

**Total Cabins:** 3

**Sleeps:** 8

**Total Heads:** 6

**Captain Cabin:** True

**Crew Cabin:** 2

**Crew Berths:** 2

## Hull and Deck Information

---

**Hull Material:** Aluminum

**Deck Material:** Aluminum

**Hull Configuration:** Semi-Displacement

**Hull Designer:** Sparkman & Stephens

## Engine Information

---

**Engines:** 2

**Manufacturer:** Caterpillar

**Model:** C18 Turbo

**Engine Type:** Inboard

**Fuel Type:** Diesel

---

# DETAILED INFORMATION

---

## Accommodations

---

A companionway leads from the port aft end of the salon to the owners' and guest accommodations below.

## Main Salon

---

Formal dining for up to eight (8) at beautiful teak round table - forward end of salon Sony 58" pop-up TV to starboard Onkyo and Sony entertainment systems - can be piped throughout interior and exterior of the vessel Custom teak cabinetry with Bamboo carved motif trim Cabinets across forward end of salon for china, glassware, table linens, etc. Double-door storage cabinets along port side which house the yacht's vast video collection Three-seat leather sofa to starboard Antique Oriental rugs Wooden slatted blinds 115V LED lighting, throughout (2) matching china table lamps and one additional smaller china lamp New carpeting throughout yacht in the summer of 2015

## Galley

---

Located on-deck forward of the main salon/dining salon Very light and spacious with an abundance of storage cabinets All cabinets have security pins for underway Major appliances and features include: Bosch side-by-side refrigerator and freezer Bosch dishwasher Dumbwaiter Food warmer Profile 5-burner cook-top and oven Black & Decker Spacemaker coffee maker GE microwave Double stainless steel sink with garbage disposal Light green granite countertops Multi-outlet strip Fold down serving table Outboard of the galley is the on-deck day head. Galley Maid fresh water head, green granite counter-top, sink with gold plated fixtures. Farther along companionway is a full length storage locker. Companionway flooring leading from salon, including the wheelhouse, is finished high-gloss teak and holly sole.

## Master Stateroom

---

All the way aft is the light and very comfortable master stateroom with a California King berth. Plenty of hanging lockers with louvered doors for ventilation. During the 2009 refit, a port closet was converted to a 2nd head - hence providing this stateroom with his and her heads. Onyx counter tops, gold plated fixtures, Galley Maid fresh water heads and roomy showers. Ports in this stateroom are covered with sliding Shoji screens. Soft goods and linens are of the highest quality. Forward of the master to port is the twin berth guest stateroom with inboard Pullman berth, flat screen TV, and en suite head with shower. Opposite to starboard is the 2nd guest stateroom which was converted in 2009 to a double. It, too, has an inboard Pullman and en suite head. Flat screen TV on forward bulkhead.

---

## Navigation and Electronics

---

Furuno 3D NAVnet - dual station (2) Furuno 120-mile radars with AIS Class B (send and receive) - dual station Furuno G-37 DGPS Furuno - Sirius Marine satellite weather - dual station Raymarine Tri-Data information equipment - dual station (depth, speed, water temp) Standard Horizon VLH-3000 loud hailer (2) ICOM IC-M604 VHF - with flybridge repeater Maptech offshore electronic navigator plotter - dual station Simrad SP25 auto pilot - dual station (2) KVH TracVision M7 3M X 95 Projector with 13' projector screen DirecTV satellite system with each of 9 TV's having independent receivers (5) Nuvico Pan/tilt/zoom cameras (3) Seaport Technology underwater cameras Geovision GV-1120 Multicam surveillance system Bose acoustic noise canceling headphones in all guest cabins Intercom/cellular phone system Cellular internet and fax Dual washers and dryers (crews quarters and lazarette)

---

## Wheelhouse

---

Camel color leather bench seat with drawers underneath Wing doors and screen doors to port & starboard Chelsea Clock & Barometer In addition to the navigational equipment and controls, there is a 12 & 24V DC electrical panel and security panel to starboard. Steps lead from the starboard side of the wheelhouse to the flybridge. A stairway to starboard leads below to the crews' quarters and engine room.

---

## Crews' Quarters

---

**BANYAN'S** crews' quarters are spacious and very comfortable, especially for a yacht of this size. At the bottom of the stairway, immediately to the left on the starboard side is a head and shower for the criss-cross berth crew cabin opposite. To the right of the stairway - starboard side - is a laundry/utility area with a Bosch washer and dryer, storage cupboards and a microwave. Immediately forward of this is the captain's cabin with double berth and an ensuite head. Opposite the laundry area is a crew dinette with seating for four. Dinette settees were reupholstered in the summer of 2015. At the same time, all of the wallcoverings in the crew's quarters were renewed, all of the joinery was refinished, the carpeting was replaced with the same quality carpeting as was installed throughout the yacht (cut and bound for easy removal and access to hatches), all of the crew berth mattresses were renewed and a new Vissani refrigerator was installed.

---

## Engine and Mechanical Equipment

---

New detuned Cat C18's, 875 hp, in 2009. 3,000 hour service completed in 10/14. Hours: Starboard- MOH on starboard engine in 02/2015, 2,953 total hours as of 03/2017. Port - MOH on port engine in December, 2016, 2,890 total hours as of 03/2017. (2) Northern Lights 33 kW generators. Hours: starboard 6,918 (as of 03/17), port 6,870 (as of 03/17) Speed and consumption: 10 knots (1100 - 1200 RPM) = 25 gph for both engines. 14 knots (1,850 RPM) = 50



gph for both engines. Furuno 3D NAVnet - dual station, updated 10/2014 Side-Power 50 hp bow thruster Side-Power 50 hp stern thruster PTO's for bow thruster, stern thruster and anchor windlass off port & starboard mains Naiad stabilizers - Fins dropped and Naiad stabilizers serviced in March 2015 (2) Seakeeper Zero-Speed gyro stabilizers, new 2009. Strainers relocated to lazarette in 2015. Zmodo complete security system with Z-viewer app for cell phone (fire, high water, security door) (2) Micron fuel scrubbers Chilled water AC, (2) compressors (2) Intake & extractor fans (2) Headhunter fresh water pumps Reverso fuel priming system MATRIX 1800 gpd watermaker

---

## Electrical system

All batteries replaced 2013 - gel-cells (2) For 24V system (2) For 12V system (2) 12V house batteries (3) 50-amp service - 220V AC inlets Shore-power 1 and 2 through Smartbox and 100-amp transformer #3 Shore-power (50-amp) for air conditioning 24 & 12V DC Main - 24V Gens - 12V Ward's Electrical panel at forward engine room bulkhead Shore cords: (3) Long 50's (3) Short 50's 100-amp box with (2) 50's

---

## Deck and Hull

Muir 4500 windlass Forbjord 150 lb. galvanized anchor with 350' chain 10-Person life raft (10) Smoke hoods Flat, stainless steel "chafe bar" removed, cleaned, replaced with new stainless steel bar using bedding compound to prevent salt water intrusion in 2015.

---

## Aft Deck

New EZ2CY curtains on aft deck plus V-Kool on all windows Sony 32" pop-up TV 38-bottle wine chiller Icemaker Refrigerator Wet bar Access to flybridge or cockpit A/C & heat or alfresco atmosphere Electric hi-lo table for cocktails or dining for up to ten (10)

---

## Lazarette

The lazarette was enlarged in 2009 after the yacht was extended by 14 feet. It houses a Bosch washer and dryer, freezer, bait freezer, steering system, two water tanks plus two Seakeeper Zero Speed Gyro stabilizers.

---

## Cockpit

Gas BBQ Snorkel gear Fishing gear Beach toys Towable water toys Access to aft deck or swim platform which has easy water and tender access 17' Nautica Catamaran w/115 Yamaha outboard and electric drop down bow

---

## Flybridge/Boat Deck

---

Nautica 17' Catamaran w/115 hp Yamaha outboard and electric drop down bow Steelhead CT 2000 davit Hard top with soft enclosure. New EZ2CY curtains in 10/2015. Toshiba 26" TV Vision fitness treadmill Ice maker Refrigerator Wet bar Access to wheelhouse or aft deck A/C and heat or alfresco atmosphere Hi-lo table for cocktails or dining for up to eight (8). One pedestal replaced with two during Spring 2015 refit. Table now slides diagonally in and out in addition to going up and down. Projector 13' movie/TV screen Boat deck repainted August 2015

---

## Tankage

---

(8) Aluminum fuel tanks: All sandblasted and recoated in March 2015 with High Solid Epoxy. #1 Under master stateroom: 880 gallons #2 Between master and guest staterooms: 1148 gallons #3 Under guest stateroom: 718 gallons #4 & 5 Day tanks, port & starboard engine room: 373 gallons each. Lazarette #6,7,8: port & starboard: 230 gallons each. Center: 180 gallons Black water, Gray Water, and Water tanks: Black water - in between main engines: 700 gallons - sandblasted and recoated in March 2015 Gray water - forward of black. Capacity unknown - sandblasted and recoated in March 2015 (2) Water tanks under crews' quarters: 500 gallons each - New March 2015 Tank tender in crew mess for fresh water and black water

---

## Fire and Safety Equipment

---

Medical emergency kit with an automatic defibrillator Kidde FM200 Halon engine room extinguishing system (12) Dry chemical fire extinguishers

---

## Additional Equipment

---

Vision Fitness treadmill and free weights, up to 25.5 lbs. Guest computer and printer DVD and CD library DVD and CD players throughout

---

## Remarks

---

**BANYAN's** owner, an experienced yachtsman, has made many significant upgrades to this lovely classic. In 2009 a 14' extension was added to the hull which provided a cockpit, lazarette storage area, and BBQ. New main C18 CATS were installed, the electrical system was revamped, new electronics, audio visual equipment, air conditioning and heating, plumbing, steering, bow & stern thrusters, and an updated anchoring system were fitted. In the winter of 2015, **BANYAN** underwent another refit which included, in part, some of the following major work: 1) Starboard engine overhauled: rebuilt head, new pistons and liners, rebuilt turbos and rods, heat exchanger cleaned, water pump and filters renewed. Zero hours as of 03/15/15. 2) Bottom plating replaced from bottom of keel to 20" up and from the bow to 40' aft, including the

water tanks. 3) All thru-hull valves serviced and checked. Those with stainless steel flanges retrofitted with delron isolator kits. 12 thru-hulls without flanges were replaced with polypropylene Banjo valves. 4) All fuel tanks cleaned and pressure tested. Grey and black water tanks, pressure tested, sandblasted, and recoated. New water tanks pressure tested and recoated. 5) Naiad stabilizer fins dropped and major service work performed in April 2015. Seakeeper gyro pumps and strainers serviced and relocated. New control boxes in lazarette. 6) Shaft logs reconditioned (coated plus new bearings and seals). Engines realigned. 7) Major tune up on both generators: New injectors, hoses, belts, clamps, oil filters, and valves set Summer 2015. Details of refit including photos and video available to be seen upon inspection of vessel. Fall 2016: (2) New Marine Exhaust System exhaust risers in October, 2016. (6) New cutlass bearings. Winter 2016: Port engine majored by Ingalls Marine Diesel in December, 2016. Stabilizer cooling system, water lines, filters and oil changed in December, 2016. The owner of **BANYAN** has taken every measure possible to assure that his yacht is in excellent mechanical and structural shape, as well as in beautiful cosmetic condition. Anyone looking for a classic yacht with up-to-date systems and a multitude of upgrades should seriously consider this superb offering. Owner dedicated to keeping BANYAN in excellent condition for next lucky purchaser.

---

## Exclusions

Potential purchasers should assume that items on the vessel at the time of viewing, but not specifically listed on this sheet, are not included with the sale of the yacht. These specifications are believed to be true and correct but cannot be guaranteed. All artwork Fishing and swimming gear Fish carpet, aft deck Kayaks Silver and china

---

## Exclusions

Owner's personal belongings.

---

## Disclaimer

The Company offers the details of this vessel or yacht in good faith but cannot guarantee or warrant the accuracy of this information nor warrant the condition of the vessel. A buyer should instruct his representatives, agents, or his surveyors, to investigate such details as the buyer desires validated. This vessel or yacht is offered subject to prior sale, price change, or withdrawal without notice.

# PHOTOS

**Aft Deck Facing Forward**



**Aft Deck - Wet Bar & IceMaker**



**Aft Deck - Facing forward**



**Aft Deck Hi-Lo Dining Table**



**Main Salon - Looking Aft**



**Main Salon - Starboard Side**



**Main Salon - Facing Aft**



**Companionway Cabinet Divider**



**Main Salon - Dining Table - Forward**



**Main Salon Forward Cabinets**



**Galley**



**Galley Aft View**





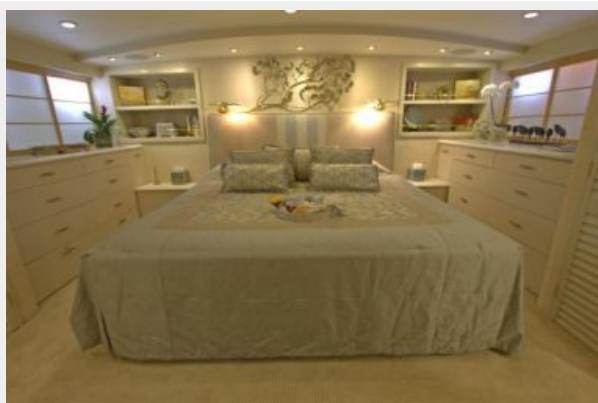
**Wheelhouse**



**Wheelhouse Console**



**Master Stateroom**



**Master Stateroom "Her" Bathroom**



**Guest Double Berth Stateroom Starboard Side**



**Guest En-Suite Bathroom**



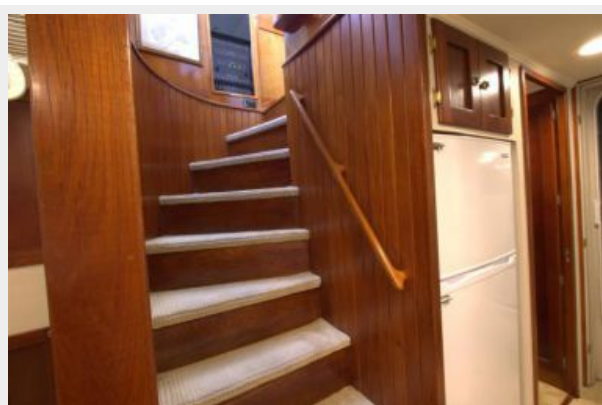
**Guest Twin Berth Stateroom Portside**



**Guest En-Suite Bathroom**



**Crew & Engine Room Companionway**



**Crew Dinette**



**Captain's Cabin**



**Crew Cabin**





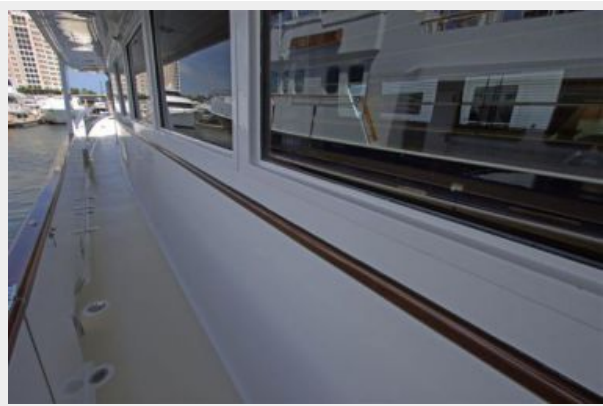
**Engine Room Looking Aft**



**Engine Room Looking Aft**



**Port Sidedeck**



**Flybridge Helm Station**



**Flybridge Seating Area**



**Flybridge Dining Table**





**Boat Deck - Aft Seating Area**



**Foredeck**



**Bow**



**Anchor Windlass**

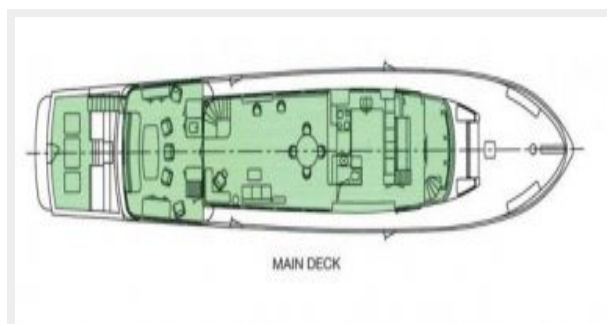
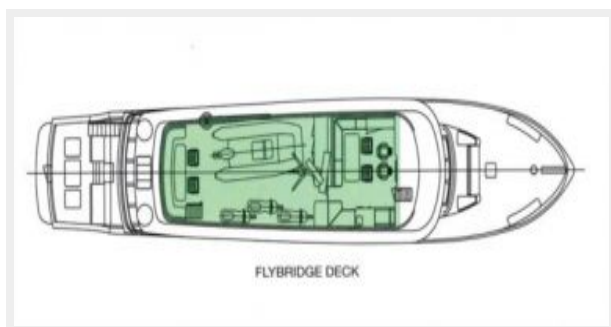


**Cockpit**



**Lazarette**





# CONTACTS

---

Andrey Shestakov, leading yacht broker of the sales department of Shestakov Yacht Sales Inc. Shestakov Yacht Sales Inc., the official representative of the Miami/Fort Lauderdale FL headquarters.

## Contact details

---

Email: **andrey@shestakovyachtsales.com**

Web: [shestakovyachtsales.com/en/](http://shestakovyachtsales.com/en/)

## Telephones

---

USA: **+1(954)274-4435**

## Office hours

---

Monday – Saturday: **9:00 - 21:00 EDT**

Sunday: **closed**

## Address

---



Harbour Towne Marina, 850 NE 3rd St,  
STE 213, Dania, FL 33004