

GPS — SAN LORENZO



Builder: [San Lorenzo](#)

Year Built: 2009

Model: Motor Yacht

Price: PRICE ON APPLICATION

Location: France

LOA: 87' 10" (26.75m)

Min Draft: 7' 3" (2.20m)

Cruise Speed: 22 Kts. (25 MPH)

Max Speed: 29 Kts. (33 MPH)

Our experienced yacht broker, Andrey Shestakov, will help you choose and buy a yacht that best suits your needs **GPS — San Lorenzo** from our catalogue. Presently, at Shestakov Yacht Sales Inc., we have a wide variety of yachts available on our sale's list. We also work in close contact with all the big yacht manufacturers from all over the world.

If you would like to buy a yacht **GPS — San Lorenzo** or would like help answering any questions concerning purchasing, selling or chartering a yacht, please call **+1(954)274-4435**

TABLE OF CONTENTS

TABLE OF CONTENTS	2
SPECIFICATIONS	3
Overview	3
Basic Information	3
Dimensions	3
Speed, Capacities and Weight	3
Accommodations	4
Hull and Deck Information	4
Engine Information	4
PHOTOS	5
GPS - SAN LORENZO 88' (SL88') (sister-ship)	5
GPS - SAN LORENZO 88' (SL88') (sister-ship)	5
GPS - SAN LORENZO 88' (SL88') - Aft Deck Lounge	5
GPS - SAN LORENZO 88' (SL88') - Flybridge	5
GPS - SAN LORENZO 88' (SL88') - Master Cabin (amidship)	6
GPS - SAN LORENZO 88' (SL88') -Main Salon	6
GPS - SAN LORENZO 88' (SL88') - VIP cabin (forward)	6
GPS - SAN LORENZO 88' (SL88') - Master Bathroom	6
GPS - SAN LORENZO 88' (SL88') - Double Cabin (starboard)	6
GPS - SAN LORENZO 88' (SL88') - Twin Cabin (port)	6
CONTACTS	7
Contact details	7
Telephones	7
Office hours	7
Address	7

SPECIFICATIONS

Overview

NOW ASKING 2,650,000 € - MORE THAN EVER THE BEST DEAL ON A SAN LORENZO 88' (SL88) GPS is a **SAN LORENZO 88' flybridge (SL88')**. Very lightly used GPS has always been perfectly maintained by her careful owner and crew!

Basic Information

Category: Motor Yacht

Sub Category: Raised Pilothouse

Model Year: 2009

Year Built: 2009

Country: France

Vessel Top: Hardtop

Fly Bridge: Yes

Cockpit: Yes

Dimensions

LOA: 87' 10" (26.75m)

LWL: 80' 1" (24.40m)

Min Draft: 7' 3" (2.20m)

Speed, Capacities and Weight

Cruise Speed: 22 Kts. (25 MPH)

Max Speed: 29 Kts. (33 MPH)

Max Speed Range: 450 Kts.

Gross Tonnage: 132 Pounds

Water Capacity: 2000 Gallons

Fuel Capacity: 10650 Gallons

Accommodations

Total Cabins: 4

Total Berths: 5

Sleeps: 8

Total Heads: 5

Crew Cabin: 2

Crew Berths: 4

Crew Sleeps: 4

Crew Heads: 2

Hull and Deck Information

Hull Material: GRP

Deck Material: Teak

Hull Configuration: Planing

Hull Color: WHITE

Hull Finish: Aluminum

Engine Information

Engines: 2

Manufacturer: MTU

Model: MTU 2000 M92

Fuel Type: Diesel

PHOTOS

GPS - SAN LORENZO 88' (SL88') (sister-ship)



GPS - SAN LORENZO 88' (SL88') (sister-ship)



GPS - SAN LORENZO 88' (SL88') - Aft Deck Lounge



GPS - SAN LORENZO 88' (SL88') - Flybridge



GPS - SAN LORENZO 88' (SL88') -Main Salon



GPS - SAN LORENZO 88' (SL88') - Master Cabin (amidship)



GPS - SAN LORENZO 88' (SL88') - Master Bathroom



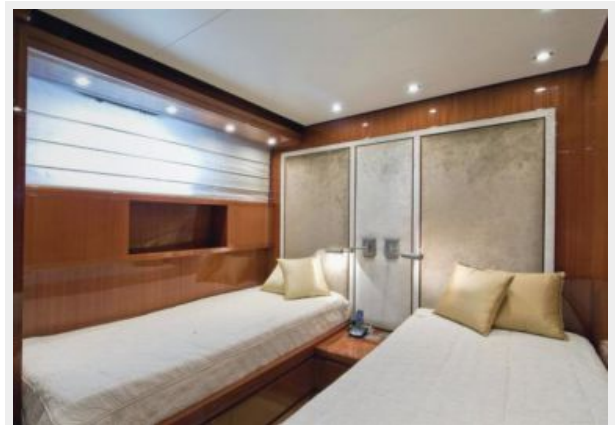
GPS - SAN LORENZO 88' (SL88') - VIP cabin (forward)



GPS - SAN LORENZO 88' (SL88') - Double Cabin (starboard)



GPS - SAN LORENZO 88' (SL88') - Twin Cabin (port)



CONTACTS

Andrey Shestakov, leading yacht broker of the sales department of Shestakov Yacht Sales Inc. Shestakov Yacht Sales Inc., the official representative of the Miami/Fort Lauderdale FL headquarters.

Contact details

Email: andrey@shestakovyachtsales.com

Web: shestakovyachtsales.com/en/

Telephones

USA: +1(954)274-4435

Office hours

Monday – Saturday: **9:00 - 21:00** EDT

Sunday: **closed**

Address



Harbour Towne Marina, 850 NE 3rd St,
STE 213, Dania, FL 33004