

SAMI KAY — TIARA



Builder: TIARA

Year Built: 2007

Model: Motor Yacht

Price: PRICE ON APPLICATION

Location: United States

LOA: 38' 0" (11.58m)

Beam: 14' 2" (4.32m)

Min Draft: 3' 6" (1.07m)

Cruise Speed: 28 Kts. (32 MPH)

Max Speed: 33 Kts. (38 MPH)

Our experienced yacht broker, Andrey Shestakov, will help you choose and buy a yacht that best suits your needs **Sami Kay — TIARA** from our catalogue. Presently, at Shestakov Yacht Sales Inc., we have a wide variety of yachts available on our sale's list. We also work in close contact with all the big yacht manufacturers from all over the world.

If you would like to buy a yacht **Sami Kay — TIARA** or would like help answering any questions concerning purchasing, selling or chartering a yacht, please call **+1(954)274-4435**

TABLE OF CONTENTS

TABLE OF CONTENTS	2
SPECIFICATIONS	3
Basic Information	3
Dimensions	3
Speed, Capacities and Weight	3
Accommodations	3
Hull and Deck Information	3
Engine Information	3
DETAILED INFORMATION	4
Standard Equipment	4
Interior Group	4
Instrumentation/Equipment/Safety	4
Factory Installed Items	4
Hours	5
Exclusions	5
Disclaimer	5
PHOTOS	7
CONTACTS	11
Contact details	11
Telephones	11
Office hours	11
Address	11

SPECIFICATIONS

Basic Information

Category: Motor Yacht

Model Year: 2007

Year Built: 2007

Country: United States

Dimensions

LOA: 38' 0" (11.58m)

Beam: 14' 2" (4.32m)

Min Draft: 3' 6" (1.07m)

Speed, Capacities and Weight

Cruise Speed: 28 Kts. (32 MPH)

Max Speed: 33 Kts. (38 MPH)

Displacement: 22500 Pounds

Water Capacity: 110 Gallons

Holding Tank: 40 Gallons

Fuel Capacity: 411 Gallons

Accommodations

Total Cabins: 1

Total Heads: 1

Hull and Deck Information

Hull Material: Fiberglass

Engine Information

Engines: 2

Manufacturer: Cummins

Model: QSC8.3 DSL

DETAILED INFORMATION

Standard Equipment

- Recessed Trim Tabs
- Custom Diamond Pattern Non-Skid Deck
- Molded-in Fiberglass Bow Pulpit w/ SS Roller System
- One Piece Welded SS Bow Rain w/ Pulpit
- Custom Curved Composite Windshield w/ 1/4" Tempered Safety Glass and Centered Vent w/ Actuator, includes PVC Cap and Hand Grabs
- Molded-in Transom Door and Gate
- Cockpit Sole Reinforced for Fighting Chair

Interior Group

- AM/FM/CD w/ 6 Disc Changer, Amp, Subwoofer, (2) Interior Speakers and (4) Cockpit Speakers
- U-Shaped Dinette w/ Table and Storage Compartments Below. Converts to Single Upper/Lower Berth and/or Double Lower Berth
- SS Undermount Sinks
- AC/DC Refrigerator/Freezer
- Double Pedestal Berth w/ Quilt and Shams
- Vacu-flush Head w/ Holding Tank

Instrumentation/Equipment/Safety

- Battery Charger
- Teleflex Hydraulic Steering System w/ 22" SS Destroyer Wheel
- (2) Nibral Propellers
- Fresh Water Cooling Main Engines
- (2) Racor Fuel Filters / Water Seps
- Electric Engine Hatch Actuators
- 110 Gallon Fresh Water Tank
- Coast Guard Safety & Medical Kit

Factory Installed Items

- Nautical w/ Almond Ultraleather and Fossil Corian Interior
- Charcoal Upper Cockpit Carpet
- Flag Blue-Colored Helm Console, Dash & Interior Windshield Frame

- 30" Swim Platform w/ Built-in Ladder
- Upper Cockpit A/C System - 16,000 BTU's
- Helm Seat Forward w/ Wet Bar, Refrigerator and Aft Seat
- Curved Companion Lounge w/ Cooler, Storage and Aft Facing Seat
- Upper Cockpit Table for Curved Companion Lounge
- Aft Fold Down Transom Lounge
- Raymarine Electronic Package Includes:
 - (2) E120 12.1" Multi Function Color Displays
 - RS125 Raystar GPS
 - Antenna
 - Ray 240 VHF Radio
 - DSM300 Digital Sounder Module
 - Speed, Depth, Temperature Transducer
 - ST60 Graphic Display
 - ST8001 S2G Smart Pilot Autopilot
- Waste Macerator w/ Y-Valve
- Solid Teak & Holly Cabin Sole
- TTS Hardtop w/ Rod Holders, Spreader Lights, (2) Composite Hatches, & Front/Side Enclosures
- (4) Lee Rod Holders
- Fresh Water Washdown
- Anchor Locker
- Raw Water Washdown
- Anchor Locker
- Macerator for Stbd. Flush
- Floor Cockpit Storage Boxes
- White Stamoid Canvas Cover
- Aft Curtain
- Cockpit Freezer & Sink w/ (2) Tackle Drawers
- Rupp Outriggers w/ Spreader

Hours

Engine Hours - 533 05/2014 Generator Hours - 729 05/2014

Exclusions

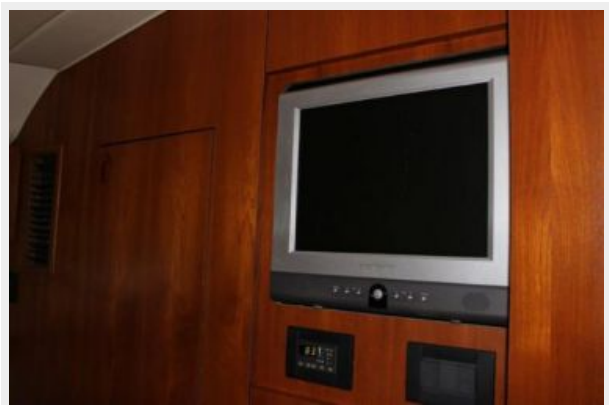
Owner's personal belongings.

Disclaimer

The Company offers the details of this vessel or yacht in good faith but cannot guarantee or

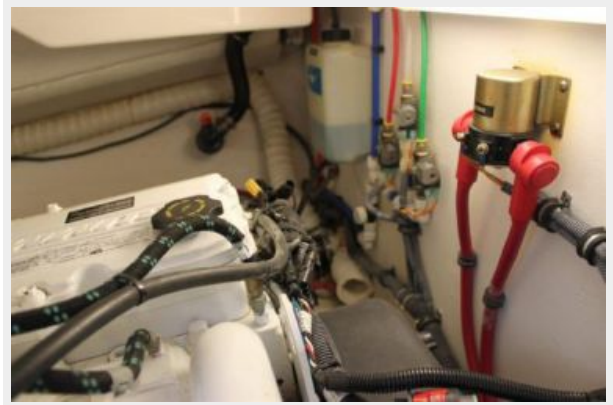
warrant the accuracy of this information nor warrant the condition of the vessel. A buyer should instruct his representatives, agents, or his surveyors, to investigate such details as the buyer desires validated. This vessel or yacht is offered subject to prior sale, price change, or withdrawal without notice.

PHOTOS









CONTACTS

Andrey Shestakov, leading yacht broker of the sales department of Shestakov Yacht Sales Inc. Shestakov Yacht Sales Inc., the official representative of the Miami/Fort Lauderdale FL headquarters.

Contact details

Email: andrey@shestakovyachtsales.com

Web: shestakovyachtsales.com/en/

Telephones

USA: +1(954)274-4435

Office hours

Monday – Saturday: **9:00 - 21:00** EDT

Sunday: **closed**

Address



Harbour Towne Marina, 850 NE 3rd St,
STE 213, Dania, FL 33004