

## STELLAR WIND — CATALINA



**Builder:** CATALINA

**LOA:** 30' 0" (9.14m)

**Year Built:** 1990

**Beam:** 10' 0" (3.05m)

**Model:** Cruising Sailboat

**Price:** PRICE ON APPLICATION

**Location:** United States

Our experienced yacht broker, Andrey Shestakov, will help you choose and buy a yacht that best suits your needs Stellar Wind — CATALINA from our catalogue. Presently, at Shestakov Yacht Sales Inc., we have a wide variety of yachts available on our sale's list. We also work in close contact with all the big yacht manufacturers from all over the world.

If you would like to buy a yacht Stellar Wind — CATALINA or would like help answering any questions concerning purchasing, selling or chartering a yacht, please call +1(954)274-4435

---

# TABLE OF CONTENTS

---

TABLE OF CONTENTS	2
SPECIFICATIONS	3
Overview	3
Basic Information	3
Dimensions	3
Speed, Capacities and Weight	3
Accommodations	3
Hull and Deck Information	3
Engine Information	4
DETAILED INFORMATION	5
Walkthrough	5
Equipment and Details	5
Exclusions	6
Disclaimer	6
PHOTOS	7
CONTACTS	10
Contact details	10
Telephones	10
Office hours	10
Address	10

---

# SPECIFICATIONS

---

## Overview

---

Current owner is not getting the use out of this Catalina 30. Time for you to take her over after 15 years.

## Basic Information

---

**Category:** Cruising Sailboat

**Model Year:** 1990

**Year Built:** 1990

**Country:** United States

## Dimensions

---

**LOA:** 30' 0" (9.14m)

**LWL:** 25' 0" (7.62m)

**Beam:** 10' 0" (3.05m)

## Speed, Capacities and Weight

---

**Displacement:** 10200 Pounds

**Water Capacity:** 54 Gallons

**Fuel Capacity:** 18 Gallons

## Accommodations

---

**Total Cabins:** 2

**Total Berths:** 5

**Total Heads:** 1

## Hull and Deck Information

---

**Hull Material:** Fiberglass

---

## Engine Information

---

**Engines:** 1

**Manufacturer:** Universal

**Model:** MS-20

**Engine Type:** Inboard

**Fuel Type:** Diesel

---

# DETAILED INFORMATION

---

## Walkthrough

---

Beginning first forward is the V berth with two single berths with a bridge piece to make a double. Next aft is a head compartment to port with a diverter type "wet" shower. To stbd. across is storage. Next aft is the salon with a dining table that folds down from the forward bulkhead. There is an "L" shaped settee to port and bench settee to stbd.. The engine is under the inboard aft portion of the "L" settee.. The galley is next aft to port open to the salon. There is a nab. station to stbd. aft just forward of a large quarter berth. The transom is last. The interior is in average condition.

## Equipment and Details

---

- Bimini top.
- Lazy jacks.
- Edson helm pedestal with stainless steel destroyer wheel and binnacle guard.
- Lewmar 40 ST jib sheet winches.
- Lewmar St 16 winch on cabin top.
- Lewmar St 7 winch on cabin top.
- Deck stepped aluminum mast and boom.
- Aluminum whisker pole.
- All lines lead aft to cockpit with clutches.
- Hood 810 Seafurl jib furler.
- Cockpit fold up table.
- Horsecollar type throwable PFD.
- Rod holder on stern rail.
- Hand diaphragm bilge pump in cockpit.
- 12 volt submersible bilge pump.
- Tachometer, hour counter, volt meter, and fuel level gauge on engine panel.
- Dula lever Morse type engine controls.
- Autohel ST4000 autopilot.
- Helm pedestal pod mounted Datamarine wind inst., Corinthian S200DL depth instrument, S100 KL speed/log.
- Apelco VXL 5110 VHF radiotelephone.
- Richie Powerdamp steering compass.
- 30 amp 125 volt shore power connection.
- Main electric panel with 12 volt battery meter.
- Statpower True Charge 40 battery charger.
- 2 x 12 volt lead acid batteries.
- 12 volt water pressure pump.
- Samsung microwave oven

- Hillerange 2 burner propane stove.
- Ice box in galley.
- Jabsco hand toilet.
- Boat US ship's clock and barometer.
- Fortress FX-18 anchor on bow roller with rode.
- Hand held 12 volt spot light.
- Carry on portable hatch top air conditioner.

---

## Exclusions

---

Owner's personal belongings.

---

## Disclaimer

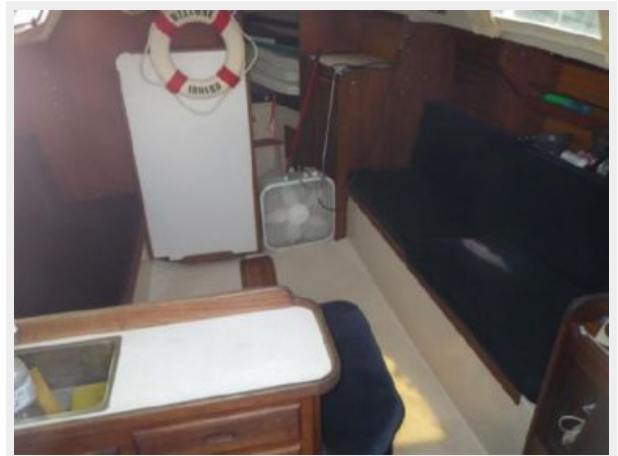
---

The Company offers the details of this vessel or yacht in good faith but cannot guarantee or warrant the accuracy of this information nor warrant the condition of the vessel. A buyer should instruct his representatives, agents, or his surveyors, to investigate such details as the buyer desires validated. This vessel or yacht is offered subject to prior sale, price change, or withdrawal without notice.

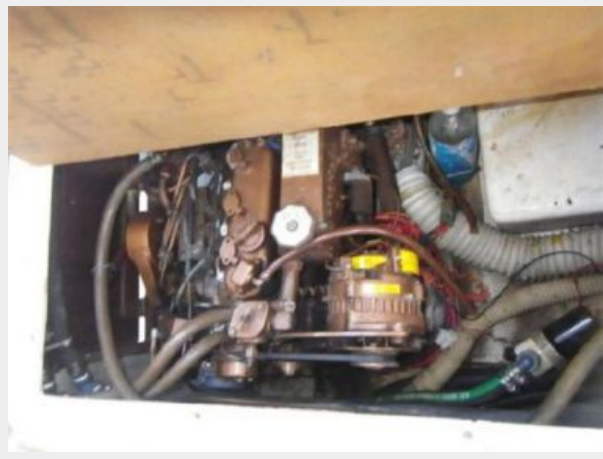
# PHOTOS











# CONTACTS

---

Andrey Shestakov, leading yacht broker of the sales department of Shestakov Yacht Sales Inc. Shestakov Yacht Sales Inc., the official representative of the Miami/Fort Lauderdale FL headquarters.

## Contact details

---

Email: [andrey@shestakovyachtsales.com](mailto:andrey@shestakovyachtsales.com)

Web: [shestakovyachtsales.com/en/](http://shestakovyachtsales.com/en/)

## Telephones

---

USA: +1(954)274-4435

## Office hours

---

Monday – Saturday: **9:00 - 21:00** EDT

Sunday: **closed**

## Address

---



Harbour Towne Marina, 850 NE 3rd St,  
STE 213, Dania, FL 33004