

DREAM CATCHER III — MERIDIAN



Builder: MERIDIAN

Year Built: 2004

Model: Motor Yacht

Price: PRICE ON APPLICATION

Location: United States

LOA: 40' 0" (12.19m)

Beam: 14' 4" (4.37m)

Max Draft: 3' 10" (1.17m)

Our experienced yacht broker, Andrey Shestakov, will help you choose and buy a yacht that best suits your needs **Dream Catcher III — MERIDIAN** from our catalogue. Presently, at Shestakov Yacht Sales Inc., we have a wide variety of yachts available on our sale's list. We also work in close contact with all the big yacht manufacturers from all over the world.

If you would like to buy a yacht **Dream Catcher III — MERIDIAN** or would like help answering any questions concerning purchasing, selling or chartering a yacht, please call **+1(954)274-4435**

TABLE OF CONTENTS

TABLE OF CONTENTS	2
SPECIFICATIONS	3
Overview	3
Basic Information	3
Dimensions	3
Speed, Capacities and Weight	3
Accommodations	4
Hull and Deck Information	4
Engine Information	4
DETAILED INFORMATION	5
Overview	5
Manufacturer Provided Description	5
Updates & Custom Features	5
Electronics & Equipment	6
Exclusions	6
Disclaimer	6
PHOTOS	8
CONTACTS	20
Contact details	20
Telephones	20
Office hours	20
Address	20

SPECIFICATIONS

Overview

Dream Catcher III, a 2004 Meridian 408 Diesel Motor Yacht is in turn key condition and is ready to take her new owners to their favorite destination. With her enormous living spaces and storage, the Meridian 408 Motor Yacht is one of the most accommodating yachts of her size. Her loving owners have enjoyed their adventures aboard and their pride of ownership is evident throughout. Two boat owners are motivated and looking for offers. Please see full specifications for a comprehensive list of Dream Catcher III's equipment, custom features and updates.

TWO BOAT OWNER SEEKING OFFERS

Basic Information

Category: Motor Yacht

Sub Category: Aft Cabin

Model Year: 2004

Year Built: 2004

Country: United States

Vessel Top: Hardtop

Cockpit: Yes

Dimensions

LOA: 40' 0" (12.19m)

Beam: 14' 4" (4.37m)

Max Draft: 3' 10" (1.17m)

Clearance: 14' 4" (4.37m)

Speed, Capacities and Weight

Displacement: 29000 Pounds

Water Capacity: 90 Gallons

Holding Tank: 55 Gallons

Fuel Capacity: 330 Gallons

Accommodations

Total Cabins: 2

Total Heads: 2

Hull and Deck Information

Hull Material: Fiberglass

Hull Configuration: Modified V-Hull

Engine Information

Engines: 2

Manufacturer: Cummins

Model: Diamond Series FWC

Engine Type: Inboard

Fuel Type: Diesel

DETAILED INFORMATION

Overview

Dream Catcher III, a 2004 Meridian 408 Diesel Motor Yacht is in turn key condition and is ready to take her new owners to their favorite destination. With her enormous living spaces and storage, the Meridian 408 Motor Yacht is one of the most accommodating yachts of her size. Her loving owners have enjoyed their adventures aboard and their pride of ownership is evident throughout. Two boat owners are motivated and looking for offers. Please see full specifications for a comprehensive list of Dream Catcher III's equipment, custom features and updates.

TWO BOAT OWNER SEEKING OFFERS

Manufacturer Provided Description

With a hull design that maximizes performance and a deck design that optimizes space, the Meridian 408's aft cabin configuration has plenty of room for family and friends. Exceptional interior visibility gives everyone views of the magnificent surroundings. A full-beam salon lets you entertain with ease, while the salon media center features a Flat Screen TV, DVD, and stereo to deliver entertainment in style. A forward head can be accessed from the forward stateroom and salon, for use as a day head. A full-beam master stateroom with regular queen innerspring mattress lets you sleep in luxurious comfort.

Updates & Custom Features

June 2013:

New Hard Top

New Isen Glass (do not roll the glass, it all snaps up)

New Bow Cushions and Cover

New Davit

Aug 2013:

Two new Lazy Boy recliners

New salon rug

New forward berth AC unit

New Battery Charger

Jan 2014:

New window treatments in Salon

June 2014:

Full boat detail

Boat Bottom painted

New anchor and 250 feet of chain

September 2014:

Bilge and Engines Cleaned

Bilge and Engines Painted

Electronics & Equipment

Electronics: Plotter - Raymarine RL80C Navigation center - Raymarine RL80C Cockpit speakers Radar - Raymarine Autopilot - Raymarine ST 6001+ Wind speed and direction - WeatherStation Log-speedometer - Raymarine TriData Radio - Clarion VHF Compass GPS - Raymarine Depthsounder - Raymarine **Inside Equipment:** Electric bilge pump - Pump Monitoring System Stern thruster - DOC Bow thruster - DOC **Electrical Equipment:** Generator - Onan 11.5 kW Shore power inlet - 50 Amp with Cable Reel **Outside Equipment/Extras:** Davits Cockpit shower Swimming ladder Gangway - Tideride Boarding Ladder Electric windlass

Exclusions

Owner's personal belongings.

Disclaimer

The Company offers the details of this vessel or yacht in good faith but cannot guarantee or warrant the accuracy of this information nor warrant the condition of the vessel. A buyer should instruct his representatives, agents, or his surveyors, to investigate such details as the buyer

desires validated. This vessel or yacht is offered subject to prior sale, price change, or withdrawal without notice.

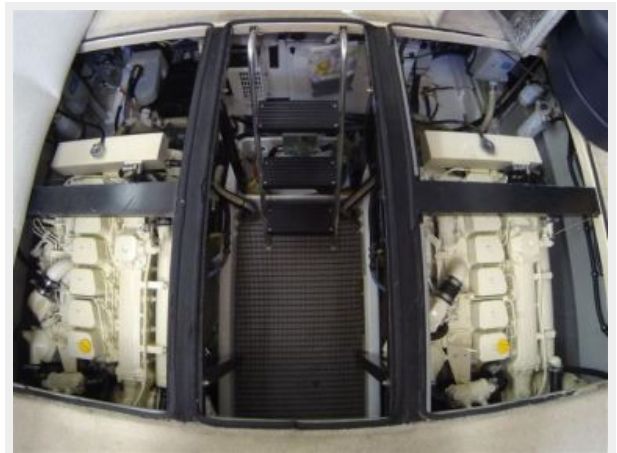
PHOTOS



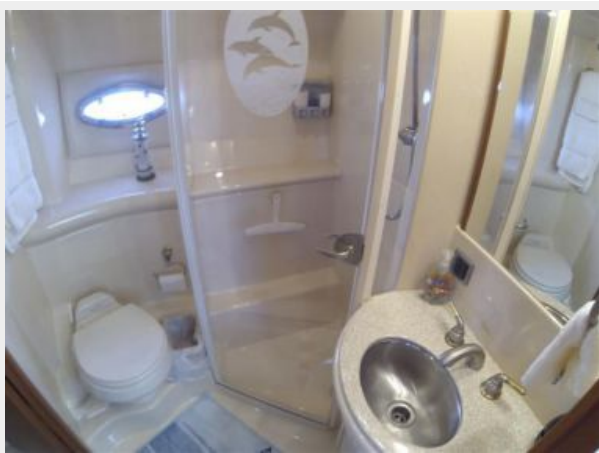




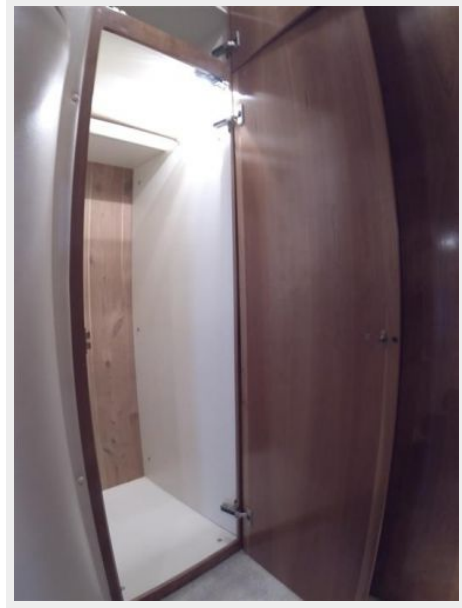


















CONTACTS

Andrey Shestakov, leading yacht broker of the sales department of Shestakov Yacht Sales Inc. Shestakov Yacht Sales Inc., the official representative of the Miami/Fort Lauderdale FL headquarters.

Contact details

Email: andrey@shestakovyachtsales.com

Web: shestakovyachtsales.com/en/

Telephones

USA: +1(954)274-4435

Office hours

Monday – Saturday: **9:00 - 21:00** EDT

Sunday: **closed**

Address



Harbour Towne Marina, 850 NE 3rd St,
STE 213, Dania, FL 33004