

TIARA 3900 OPEN — TIARA



Судостроитель: TIARA

Год постройки: 2009

Модель: Крейсер

Цена: **ЦЕНА ЯХТЫ ПО ЗАПРОСУ**

Местонахождение: United States

Длина общая: 39' 0" (11.89m)

Ширина: 15' 0" (4.57m)

Мин. осадка: 3' 5" (1.04m)

Макс. осадка: 3' 5" (1.04m)

Крейс. скорость: 23.462358534 Kts. (27 MPH)

Макс. скорость: 27.807239744 Kts. (32 MPH)

Купить **Tiara 3900 Open — TIARA** а также выбрать подходящую вам яхту из нашего каталога яхт вам поможет опытный яхтенный брокер Андрей Шестаков. На сегодняшний день компания **Shestakov Yacht Sales Inc.** имеет большое количество яхт в собственном списке продаж, а также тесно сотрудничает со всеми крупными яхтенными производителями по всему миру.

Для того чтобы купить яхту **Tiara 3900 Open — TIARA** а также проконсультироваться по любому вопросу связанному с покупкой, продажей, чартером яхт позвоните по телефону **+7(918)465-66-44**.

ОГЛАВЛЕНИЕ

ОГЛАВЛЕНИЕ	2
ХАРАКТЕРИСТИКИ	4
Обзор	4
Основная информация	4
Размеры	4
Скорость, вместимость и масса	5
Размещение	5
Корпус и палуба	5
Информация о двигателе	5
ПОДРОБНОЕ ОПИСАНИЕ	6
Accommodations	6
Salon	6
Galley	6
Master Stateroom	7
Manufacturer Provided Description	7
Heads-Master and Starboard.	7
Deck Equipment	7
Electronics	8
Engineer Room	8
Remarks	8
Исключения	8
Отказ от ответственности	8
ФОТОГРАФИИ	10
КОНТАКТЫ	15
Контактная информация	15
Телефоны	15
Время работы	15
Адрес	15

ХАРАКТЕРИСТИКИ

Обзор

The owner of this Tiara wants his Tiara sold this month, without a doubt! We all know that the Holiday Season sometimes takes our focus away from that next boat purchase, but towards Santa Claus, family and friends. He understands this and he appreciates it as well! In order to keep up with this Holiday Season, the price has been reduced to \$375,000, from the initial offering of \$399,000. I have been instructed to go back to the initial offering listing price on January 1, 2015. Exceptional 2009 Tiara Yacht 3900 Open, especially the price. The engines were just serviced, including heat exchangers and after cooling cleaning. Only 450 hours on the engines and only 575 hours on the generator. Included are two Station TV, allowing for different viewing in the master cabin vs the salon. Two cockpit A/C units designed to keep the helm/bridge area cool. The cockpit includes a refrigerator, ice maker and even a freezer! This one owner has another boat coming, so this 3900 Tiara is priced for a quick sale!

Основная информация

Тип судна: Крейсер

Подкатегория: Express

Модельный год: 2009

Год постройки: 2009

Страна: United States

Верх: Hardtop

Размеры

Длина общая: 39' 0" (11.89m)

Ширина: 15' 0" (4.57m)

Мин. осадка: 3' 5" (1.04m)

Макс. осадка: 3' 5" (1.04m)

Трапы: 10' 4" (3.15m)

Длина привального бруса: 41' 11"
(12.78m)

Скорость, вместимость и масса

Крейс. скорость: 23.462358534 Kts. (27 MPH) **Макс. скорость:** 27.807239744 Kts. (32 MPH)

Водоизмещение: 24500 Pounds **Вместимость воды:** 120 Gallons

Вместимость сточного бака: 30 Gallons **Объем топливного бака:** 535 Gallons

Размещение

Всего кают: 1

Спальные места: 5

Всего ком. состава: 11

Корпус и палуба

Материал корпуса: Fiberglass

Материал палубы: Fiberglass

Комплектация корпуса: Deep Vee

Цвет корпуса: White

Отделка корпуса: Polyethylene

Информация о двигателе

Двигатели: 2

Производитель: Cummins

Модель: QSC 8.3

Тип двигателя: Inboard

Тип топлива: Diesel

ПОДРОБНОЕ ОПИСАНИЕ

Accommodations

The 3900 Tiara Open replaced a very popular 3800 Tiara Open and can be considered to be the up-graded version of the yacht. The yacht maintains many of the features of the 3800 while adding to the areas to make it the perfect size yacht for cruising and fishing in luxury.

Forward is a true queen size berth with plenty of room on either side to get in and out and get dress. There is typical abundant storage under the berth along with a large hanging locker and 5 cabinets on the hull sides. The cabin features a Sharp flat screen TV, private entrance to the large head and shower and center line hatch and window over the berth. Next aft on the port side is the head and large stall shower with dual access from the master and the salon. A full fiberglass head with stall shower with sump pump/drain makes it easy to clean and keep tidy. Corian counter tops and stainless steel sink, mirrored vanity and plenty of storage combines to make a very useful addition to a popular model. The galley is aft which is large and functional with the U-shaped dinette across to the starboard side. The dinette converts to a large lower berth for two and upper Pullman berth for one. Up the teak steps and thru the acrylic sliding companion way door with screen to the upper cockpit. The helm is on the starboard side with full navigation while the port side has an L-lounge with forward facing swivel seat and cocktail table. There is also a wet bar with pullout refrigerator, aft facing seat with freezer under cushions and 32000 BTU's of AC under the Tiara fiberglass hard top and enclosure. The lower cockpit features, optional L-lounge in aft cockpit, transom gate to fiberglass swim platform and fore and aft flush deck boxes on either side.

Salon

- Custom teak hi-low table • Teak entry steps with storage • Subwoofer, interior & exterior speakers • Sharp Flat Screen TV 26" • Port holes (3) • Convertible dinette & Pullman • Stereo system with DVD/CD player • Upper hullside cabinets (3) • Marine Air conditioning, 16,000 BTU's

Galley

- Corian counter top • Stainless steel sink • Upper dish locker, 3 cabinets • Two-burn Kenyon cook top • Drawer style ref/freezer • Drop in storage in corner of counter top • Under counter storage & aft pantry

- Two utensil draws

- Panasonic Microwave • Exhaust fan • Trash bin storage

Master Stateroom

- Large queen berth with storage under assisted by gas rams • 5 hull side cabinets • Cedar lined hanging locker • Private entrance to head/shower
- Large overhead hatch and window • Indirect lighting • Sliding entry door • Air conditioning controls

Manufacturer Provided Description

The 3900 Open artfully blends the pleasure of cruising and the passion of fishing. While staying true to the versatile Open design that is a Tiara Yachts legacy, the 3900 Open turns up the volume on features that resonate with anglers. Nowhere is this blend more successfully accomplished than the aft cockpit and its mezzanine seating. Innovative for a boat this size, the aft-facing mezzanine seat sight level is perfect for the cruiser and ideal for the fisherman eyeing bait. Discover the many other innovations that make the 3900 Open a great choice for fishing. Or cruising. Or both.

Heads-Master and Starboard.

- Full frame door with entrance from M/S and Salon • Corian counter top with stainless steel sink
- Exhaust fan • Full fiberglass head with bi-fold shower • Vacuflush head • Air conditioning vent & port hole

Deck Equipment

- Pulpit and Lewmar windlass rode, chain & remote • Windshield wipers and washers • Bilge pumps (3) • Engine room blower
- Navigation Lights & horn • Gel coated bilge • Six stainless steel cleats • Tiara hinged helm console with drink holders • Center line acrylic sliding door w/screen
- Port aft-facing mezzanine seat with ref/freezer • Cockpit shower • Intra cockpit LED courtesy lights • Two insulated flush floor storage boxes
- Molded in transom gate & swim platform • Starboard side tackle draws • Hard Top Cruising Style, skylight & opening hatch • Underwater lights • Trim Tabs
- Fiberglass hard top with hatch & lights • Spreader lights • Tiara custom diamond pattern non-skid • One-piece welded bow rail
- Tiara custom composite windshield • Tracey Adjustable helm chair • Port L-lounge w/swivel

seat fwd facing • Hydraulic engine room hatch & day hatch • Cockpit coaming padding • Fresh & raw water wash dow • Aft lazarette hatch • L-lounge, aft CP seats & custom teak table • L-lounge, upped CP w/teak table swivel seat • Wet bar & under counter refrigerator • Rod holders (4) flush mount

Electronics

- (2) Raymarine Displays: • Chart Plotter • GPS • Radar
- Depth • Raymarine ST-70 Depth Finder • Raymarine Auto-Pilot • Raymarine VHF • (2) Smartcraft Engine Displays • ACR Spotlight

Engineer Room

- Onan 9 KW Generator • Victron battery charger • Battery Parallel system & bonding system • Hydraulic steering • Racor fuel water separators • Engine room lights 12 Volt • Composite fuel tanks • Fire extinguisher system FE-241 auto/manual • Water heater • 12 volt Dc and 120 Volt AC electrical systems • One (1) 240 volt 65shore cord and cable recoiler • Cable TV and dock side water • Two banks of 12 Batteries • Reverse polarity indicator
- Water cooled shaft logs • Electric engine hatch lifters • Raw water intake strainers • Holding tank & pump out • Freshwater tank 120 gals & pump

Remarks

This 3900 Tiara has the finest appointments, loads of room in the cockpit and bridge deck for onboard activity and a comfortable cabin with great family space. The 3900 Tiara is a tremendous boat for Floridastyle boating and safe family activity. Combined with awesome engineering for a hull that can handle serious sea conditions and enough speed to run 30 knots and more.

Исключения

При продаже яхты исключаются личные вещи владельца.

Отказ от ответственности

Компания предоставляет описание судна или яхты добросовестно, но не может гарантировать точность этой информации, а также не ручается за техническое состояние. Покупатель должен проинструктировать своих агентов или оценщиков

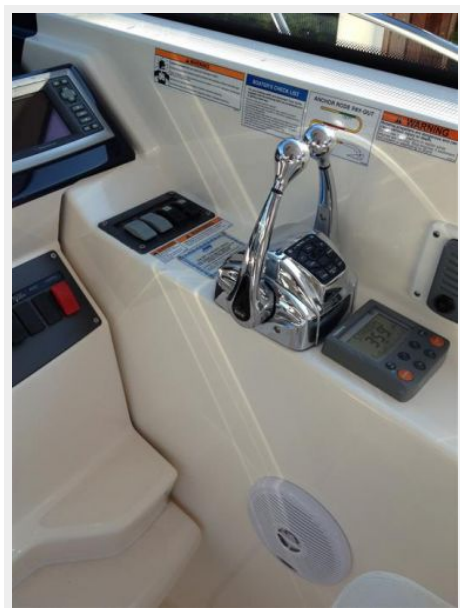
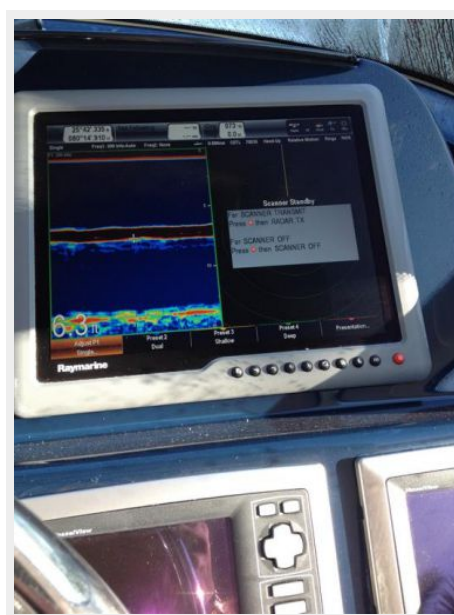
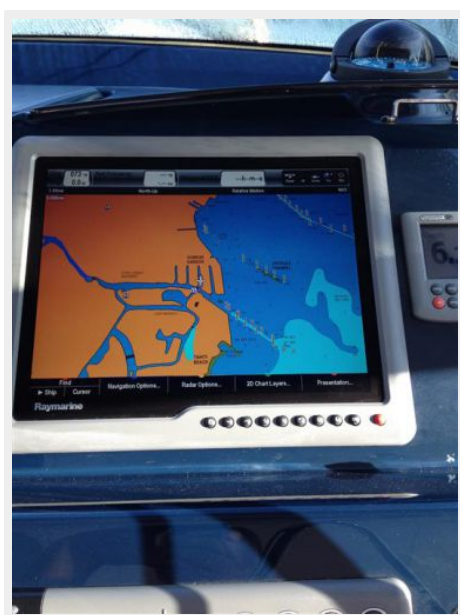
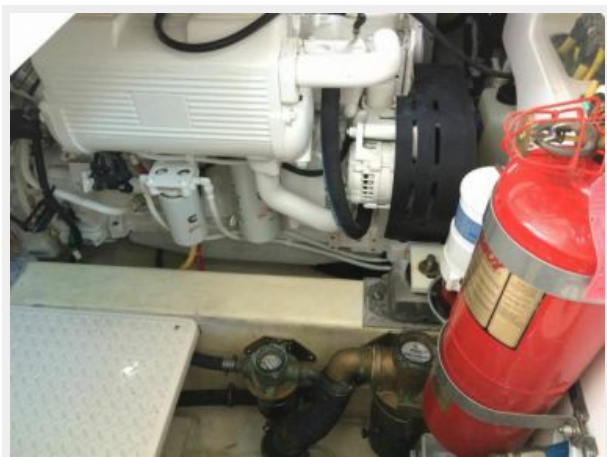
исследовать представленную информацию более подробно, по собственному желанию. Продажа судна или яхты, изменение цены или снятие с продажи будет происходить без предварительного уведомления.

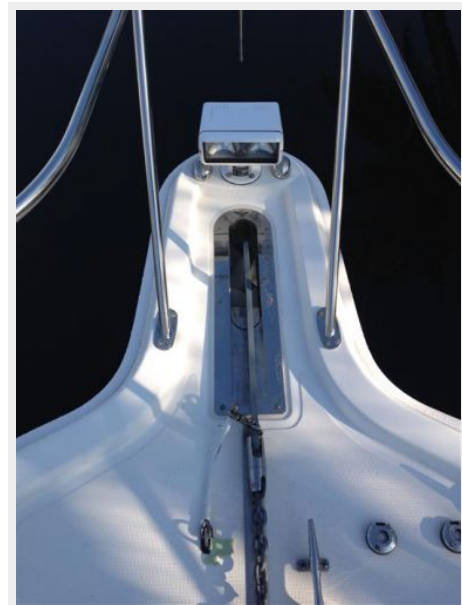
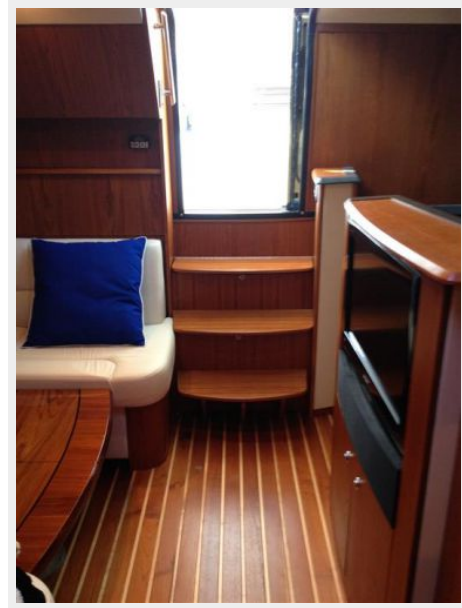
ФОТОГРАФИИ











КОНТАКТЫ

Андрей Шестаков (Andrey Shestakov) – ведущий яхтенный брокер отдела продаж яхт и судов компании Shestakov Yacht Sales Inc. Официальный представитель Shestakov Yacht Sales Inc. для русскоговорящих клиентов в центральном офисе компании в Майами/Форт Лодердейл/Флорида/США.

Контактная информация

Email: andrey@shestakovyachtsales.com

Web: shestakovyachtsales.com

Телефоны

Краснодарский край: **+7(918)465-66-44**

США, Майами, Флорида: **+1(954)274-4435**

Время работы

Понедельник – Суббота: **9:00 - 21:00**
EDT

Воскресенье: **Закрето**

Адрес



Harbour Towne Marina, 850 NE 3rd St,
STE 213, Dania, FL 33004