

46FT 2004 HUNTER 466 — HUNTER



Builder: HUNTER

Year Built: 2004

Model: Cruising Sailboat

Price: PRICE ON APPLICATION

Location: United States

LOA: 46' 0" (14.02m)

Beam: 14' 0" (4.27m)

Max Draft: 6' 6" (1.98m)

Our experienced yacht broker, Andrey Shestakov, will help you choose and buy a yacht that best suits your needs 46ft 2004 Hunter 466 — HUNTER from our catalogue. Presently, at Shestakov Yacht Sales Inc., we have a wide variety of yachts available on our sale's list. We also work in close contact with all the big yacht manufacturers from all over the world.

If you would like to buy a yacht 46ft 2004 Hunter 466 — HUNTER or would like help answering any questions concerning purchasing, selling or chartering a yacht, please call +1(954)274-4435

TABLE OF CONTENTS

TABLE OF CONTENTS	2
SPECIFICATIONS	4
Overview	4
Basic Information	4
Dimensions	4
Speed, Capacities and Weight	4
Accommodations	4
Hull and Deck Information	5
Engine Information	5
DETAILED INFORMATION	6
Sail Area	6
Keel Details	6
Manufacturer Provided Description	6
Exclusions	6
Disclaimer	6
PHOTOS	7
Manufacturer Provided Image	7
Manufacturer Provided Image	8
Manufacturer Provided Image	8
Manufacturer Provided Image	8
Manufacturer Provided Image	8
Manufacturer Provided Image	8
Manufacturer Provided Image	8
Manufacturer Provided Image	9
CONTACTS	10
Contact details	10
Telephones	10
Office hours	10

Address

10

SPECIFICATIONS

Overview

Performance and versatility best describes this vessel. The sleek hull form design slides gracefully across the ocean and is easily handled. Great live aboard or cruiser/racer, ready for an ocean voyage! A MUST SEE.

Basic Information

Category: Cruising Sailboat

Sub Category: Cruising/Racing Sailboat

Model Year: 2004

Year Built: 2004

Country: United States

Dimensions

LOA: 46' 0" (14.02m)

LWL: 39' 8" (12.09m)

Beam: 14' 0" (4.27m)

Max Draft: 6' 6" (1.98m)

Speed, Capacities and Weight

Displacement: 26180 Pounds

Water Capacity: 200 Gallons

Holding Tank: 50 Gallons

Fuel Capacity: 100 Gallons

Accommodations

Total Cabins: 2

Total Berths: 6

Total Heads: 2

Hull and Deck Information

Hull Material: Fiberglass

Engine Information

Engines: 1

Manufacturer: Yanmar

Engine Type: Inboard

Fuel Type: Diesel

DETAILED INFORMATION

Sail Area

IJPE : 933.00 sq ft I : 55.33 ft J : 17.00 ft P : 51.42 ft E : 18.00 ft Working Sail Area : 933.00 sq ft

Keel Details

Keel #1 Keel Type: Bulb Ballast: 9500 lb Displacement: 26000 sq ft Max Draft: 5.50 ft

Manufacturer Provided Description

Versatility best describes the Hunter 466. Whether owners want to cross oceans or bays, bang around the buoys or just liveaboard, this boat has the capacity to do it all. The dinette area is large enough to handle the crew, but intimate enough for just two. Storage is plentiful as is the natural light and ventilation. Hand-rubbed teak and exquisite fabrics are in evidence throughout the grand interior. An innovative forward head arrangement splits the shower and head so both can be used at once. A large dual-opening refrigerator and freezer are central to the U-shaped galley. The Force 10 stove and oven, plus a microwave will make dinners a joy to prepare, while the island sink will have cleanup covered. Storage for everything is at hand including the recessed trash receptacle. The forward master stateroom rivals most yachts twice her size. Twin hanging lockers and lots of drawers make staying aboard easy and a great night's sleep is guaranteed by the innerspring mattresses. Entertaining is gracious with the open salon which incorporates a TV and CD stereo. Twin comfortable seats and a convertible cocktail table are located just forward of the extensive nav station with plenty of space for electronics and gear. Aft, owners have a choice of two layouts: dual staterooms or trade one in for an office / work area. Both are large, airy and comfortable.

Exclusions

Owner's personal belongings.

Disclaimer

The Company offers the details of this vessel or yacht in good faith but cannot guarantee or warrant the accuracy of this information nor warrant the condition of the vessel. A buyer should instruct his representatives, agents, or his surveyors, to investigate such details as the buyer desires validated. This vessel or yacht is offered subject to prior sale, price change, or withdrawal without notice.

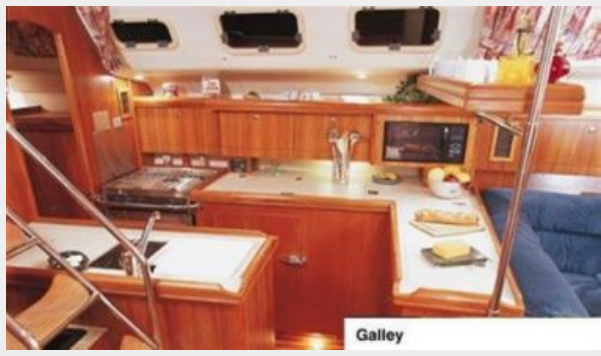
PHOTOS



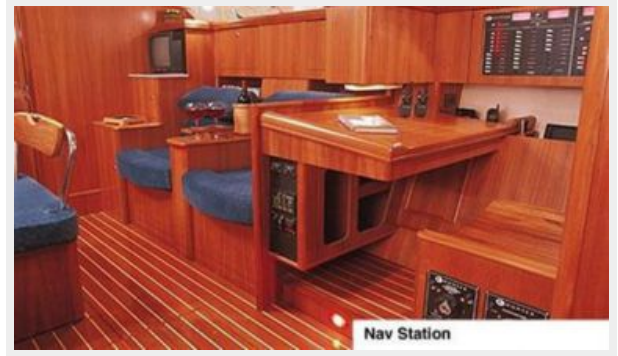
Manufacturer Provided Image



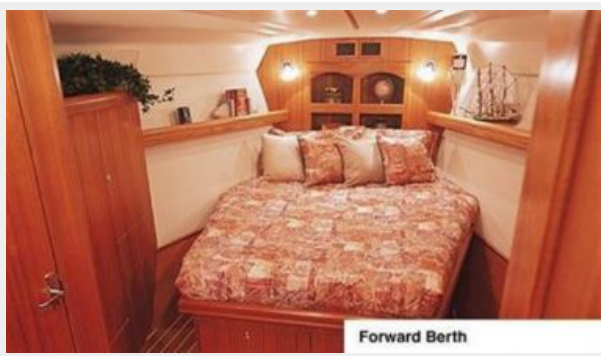
Manufacturer Provided Image



Manufacturer Provided Image



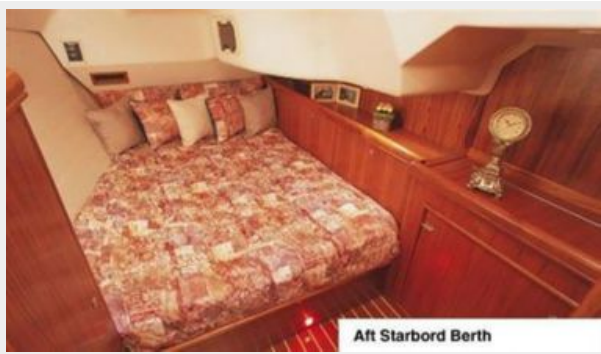
Manufacturer Provided Image



Manufacturer Provided Image



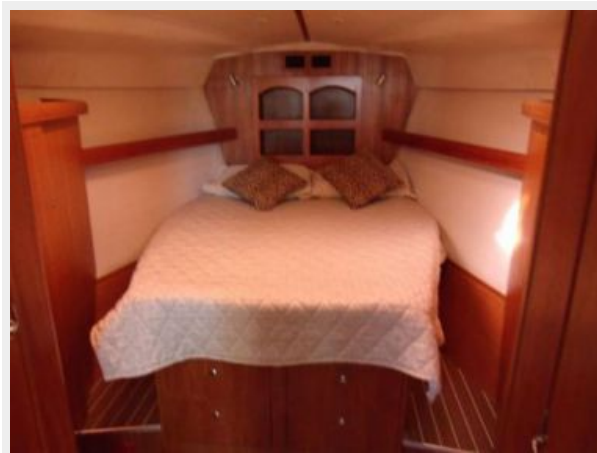
Manufacturer Provided Image



Manufacturer Provided Image



Manufacturer Provided Image



CONTACTS

Andrey Shestakov, leading yacht broker of the sales department of Shestakov Yacht Sales Inc. Shestakov Yacht Sales Inc., the official representative of the Miami/Fort Lauderdale FL headquarters.

Contact details

Email: andrey@shestakovyachtsales.com

Web: shestakovyachtsales.com/en/

Telephones

USA: +1(954)274-4435

Office hours

Monday – Saturday: **9:00 - 21:00** EDT

Sunday: **closed**

Address



Harbour Towne Marina, 850 NE 3rd St,
STE 213, Dania, FL 33004