

## LESTIQUE (RESERVED) — OFFSHORE



**Судостроитель:** OFFSHORE

**Год постройки:** 1999

**Модель:** Моторная яхта

**Цена:** **ЦЕНА ЯХТЫ ПО ЗАПРОСУ**

**Местонахождение:** United States

**Длина общая:** 54' 0" (16.46m)

**Ширина:** 15' 10" (4.83m)

**Мин. осадка:** 4' 6" (1.37m)

**Макс. осадка:** 4' 8" (1.42m)

**Крейс. скорость:** 14 Kts. (16 MPH)

**Макс. скорость:** 17 Kts. (20 MPH)

Купить **LESTIQUE (Reserved) — OFFSHORE** а также выбрать подходящую вам яхту из нашего каталога яхт вам поможет опытный яхтенный брокер Андрей Шестаков. На сегодняшний день компания **Shestakov Yacht Sales Inc.** имеет большое количество яхт в собственном списке продаж, а также тесно сотрудничает со всеми крупными яхтенными производителями по всему миру.

Для того чтобы купить яхту **LESTIQUE (Reserved) — OFFSHORE** а также проконсультироваться по любому вопросу связанному с покупкой, продажей, чартером яхт позвоните по телефону **+7(918)465-66-44**.

# ОГЛАВЛЕНИЕ

ОГЛАВЛЕНИЕ	2
ХАРАКТЕРИСТИКИ	5
Обзор	5
Основная информация	5
Размеры	5
Скорость, вместимость и масса	6
Размещение	6
Корпус и палуба	6
Информация о двигателе	6
ПОДРОБНОЕ ОПИСАНИЕ	7
Overview	7
Vessel Walkthrough	7
Salon	8
Galley & Laundry	8
Pilothouse	9
Master Stateroom	9
Guest Stateroom Port	10
Guest Stateroom Starboard	10
Electronics & Navigation Equipment	10
Deck Equipment	11
Flybridge & Boat Deck	12
Engine Room & Mechanical Equipment	12
Electrical Equipment	13
Hull & Construction	13
Remarks	14
Exclusions	14
Исключения	14
Отказ от ответственности	14

ФОТОГРАФИИ	15
Side Deck	15
Cockpit	15
Salon Forward	15
Salon Port	15
Salon Starboard	15
Salon Aft	15
Salon Settee Storage	16
Galley	16
Galley	16
Salon/Galley Storage Cabinet	16
Pilothouse Stidd Chairs	16
Pilothouse	16
Pilothouse Aft	17
Master Stateroom	17
Master Stateroom Starboard	17
Master Stateroom Port	17
Master Head	18
Lower Companionway	18
Washer & Dryer	18
Port Guest Stateroom	18
Starboard Guest Stateroom	19
Guest Head	19
Flybridge Aft	19
Flybridge Helm	19
Foredeck	20
Port Bow	20
Starboard Bow	20
Port Aft Quarter	20

---

General Arrangement	20
КОНТАКТЫ	21
Контактная информация	21
Телефоны	21
Время работы	21
Адрес	21

# ХАРАКТЕРИСТИКИ

## Обзор

- New Furuno 3D NavNets
- Naiad Stabilizers w/ Multisea II Controls
- New Bimini top & Cockpit Sunshade
- Fresh Bottom Paint
- New AGM Batteries
- Twin Stidd Chairs in Pilothouse
- 3 Stateroom Arrangement

## Основная информация

<b>Тип судна:</b> Моторная яхта	<b>Подкатегория:</b> Pilothouse
<b>Модельный год:</b> 2000	<b>Год постройки:</b> 1999
<b>Страна:</b> United States	<b>Верх:</b> 2353
<b>Открытая палуба мостика:</b> Да	<b>Кубрик:</b> Да

## Размеры

<b>Длина общая:</b> 54' 0" (16.46m)	<b>Ширина:</b> 15' 10" (4.83m)
<b>Мин. осадка:</b> 4' 6" (1.37m)	<b>Макс. осадка:</b> 4' 8" (1.42m)
<b>Трапы:</b> 20' 3" (6.17m)	<b>Длина привального бруса:</b> 57' 3" (17.45m)

## Скорость, вместимость и масса

---

<b>Крейс. скорость:</b> 14 Kts. (16 MPH)	<b>Дальность на крейсерской скорости:</b> 500
<b>Макс. скорость:</b> 17 Kts. (20 MPH)	<b>Макс. скорость поворота:</b> 2600 Kts.
<b>Водоизмещение:</b> 58000 Pounds	<b>Вместимость воды:</b> 300 Gallons
<b>Вместимость сточного бака:</b> 70 Gallons	<b>Объем топливного бака:</b> 1000 Gallons

## Размещение

---

<b>Всего кают:</b> 3	<b>Всего коек:</b> 4
<b>Спальные места:</b> 6	<b>Всего ком. состава:</b> 2

## Корпус и палуба

---

<b>Материал корпуса:</b> Fiberglass	<b>Материал палубы:</b> Fiberglass
<b>Комплектация корпуса:</b> Modified V-Hull	<b>Цвет корпуса:</b> White
<b>Отделка корпуса:</b> Fiberglass	<b>Дизайнер корпуса:</b> William Crealock

## Информация о двигателе

---

<b>Двигатели:</b> 2	<b>Производитель:</b> Cummins
<b>Модель:</b> 6CTA 8.3-M3	<b>Тип двигателя:</b> Inboard
<b>Тип топлива:</b> Diesel	

---

# ПОДРОБНОЕ ОПИСАНИЕ

---

## Overview

---

- **New Furuno 3D NavNets**
- **Naiad Stabilizers with Multi Sea Controls**
- **New Bimini Top & Cockpit Sun Shade**
- **New AGM Batteries**
- **Fresh Bottom Paint**
- **3 Stateroom Arrangement**

This is a rare 3 stateroom, economical Cummins powered Offshore 54 Pilothouse. Known for their high quality construction, functionality, traditional style, wide walk around decks and William Crealock design providing the “Softest ride on the water”, LESTIQUE epitomizes all of this and more. She has been maintained in flawless condition and upgraded constantly by the same owners for 14 years. Truly turnkey!

## Vessel Walkthrough

---

Beginning with the spacious aft deck/ cockpit area features include a starboard side transom door which leads to a large swim platform with a concealed dive ladder in the center. There are two flush deck storage/ fish boxes with gas assisted lifts as well as a hatch with access to the spacious lazarette. There is a third steering station on the forward starboard side of the cockpit. In addition there is a day hatch just to port of the salon door leading to the forward lazarette and engine room. On the port side forward is a molded fiberglass storage cabinet. A varnished teak caprail with four flush mounted rod holders and removable outriggers runs the perimeter of the cockpit. There are wide full walk-around side decks with high raised bulwarks. The boat deck overhangs provide weather protection and shade to the aft and side decks. Other features include molded non-skid decks, heavy duty stainless steel hand rails and deck hardware as well as an integrated dual anchor roller on the fiberglass bow pulpit.

The salon is entered from the aft deck/cockpit through double centerline sliding doors. Joinerwork in the salon and throughout the yacht is done in a rich satin finished cherry wood with burl maple accents. A large U shaped settee which converts to a double berth is to port. It surrounds a custom Scoponich cherry wood hi-lo coffee/dining table. Immediately to starboard is a built-in cabinet with flat panel TV, video components and storage. Continuing to starboard are two upholstered barrel chairs followed by another large built-in cabinet providing additional storage lockers and drawers. The galley is to port just forward of the salon. There is abundant counter space, overhead storage cabinetry and storage drawers. A hatch in the galley floor provides additional access to the engine room. Up two steps from the salon and galley leads to the large pilothouse area including port and starboard sliding access doors, Pompanette helm and companion chairs and convertible raised settee with table. A cabinet to starboard provides additional storage. Aft visibility from the centerline lower helm is excellent via the galley pass

thru. There is also a small pass thru window from the pilothouse to the flybridge.

The master and guest staterooms are accessed via a companionway forward and down from the starboard side of the pilothouse. The master is forward and features a comfortable island queen sized berth and generous storage including two cedar lined hanging lockers. There are opening portlights on both sides of the cabin and a hatch above. The large en suite head has a Vacu-flush toilet, vanity and large stall shower. Aft to port is a guest stateroom with a double berth running fore and aft. A cedar lined hanging locker, drawers beneath the berth, and numerous cabinets provide ample storage. The second guest stateroom is to starboard and features an upper and lower berth arrangement. The top berth slides out about 10" to create a double berth with the addition of a cushion insert. There are drawers beneath the lower berth, a cedar lined hanging locker and built-in nightstand with a drawer and mirror above. The guest staterooms share a head located aft with Vacu-flush toilet vanity and large stall shower.

A locker at the foot of the stairs from the pilothouse contains the Asko stacked washer and dryer.

The flybridge is accessed from the pilothouse stairway through a plexiglass door or from the aft deck up a stainless steel ladder. There is a large wrap around cushioned seating area with two teak trimmed tables, a wet bar with refrigerator, and Pompanette helm & companion ladder back pedestal chairs. A bimini top shades the flybridge from the radar arch forward. There is a storage cabinet on the starboard side next to the refrigerator and additional storage beneath the seating. Aft of the seating area is the boat deck with tender and davit.

---

## Salon

---

- Convertible U shaped settee w/storage beneath
- Custom Scoonich high gloss cherry wood hi/lo cocktail/dining table w/fold down leaves & extension leaf
- (2) upholstered barrel chairs
- 40" Samsung thin screen LED TV
- Sony Blu-Ray Disc/DVD player BDP-BX18
- Sony stereo system
- (2) overhead stereo speakers
- Hunter Douglas Duet window shades
- Upholstered window valances
- Bound edge carpeting
- (12) overhead recessed lights
- Perimeter rope lighting

---

## Galley & Laundry

---



- Jenn-Air side by side refrigerator & freezer w/in door water & ice dispenser
- GE Turntable microwave oven
- Broan trash compactor
- Kenyon 3 burner electric stove
- Oven below cooktop
- Corian countertops
- Storage drawers
- Over head storage cabinets
- Franke stainless steel sink w/ garbage disposal
- Cherry & holly sole
- Mingood Intercom
- Asko #10505 clothes washer
- Asko #7005 clothes dryer

## Pilothouse

---

- Convertible settee w/storage drawers & cabinet beneath
- (2) Pompanette cushioned helm chairs
- Cherry & maple hi-lo table
- Chart storage compartment
- Centerline helm station w/cherry wood destroyer wheel & full instrumentation
- Port & starboard sliding entry doors
- Port & starboard sliding windows
- Manship overhead hatch
- Hunter Douglas Duet window shades
- Cherry & holly sole
- Built-in storage cabinet w/lockers & drawers
- Chart storage drawer
- Mingood Intercom

## Master Stateroom

---

- Queen size berth w/custom mattress, fitted sheets, bed spread & shams
- (4) storage drawers beneath berth
- Built-in nightstands
- (2) reading lights
- Panasonic 13" TV
- (8) storage cabinets
- (2) cedar lined hanging lockers
- Built-in chest of drawers w/mirror above
- (2) Manship portlights w/custom fabric curtains
- Manship overhead hatch

- Mirrored forward bulkhead access doors to anchor locker
- Bound edge carpet sole
- Mingood Intercom

---

## Guest Stateroom Port

---

- Double berth w/fitted sheets, bedspread, upholstered headboard
- (4) storage drawers beneath berth
- Cedar lined hanging locker
- (2) storage cabinets
- Panasonic 13" TV
- Manship portlight w/curtain
- (2) reading lights
- Mingood Intercom

---

## Guest Stateroom Starboard

---

- Upper & lower berths w/fitted bedspreads & custom fitted sheets
- Panasonic 13" TV
- (2) storage drawers below lower berth
- Storage cabinet
- (2) reading lights
- Built-in night stand w/drawer, cabinet & mirror above
- Cedar lined hanging locker
- Manship portlight w/curtains & valence
- Mingood Intercom

---

## Electronics & Navigation Equipment

---

- (2) Furuno NavNet 3D, 12.1" Multi Function Displays w/GPS chart plotter, depth, (Flybridge & Pilothouse, 2013)
- Furuno 1942 MK2, 6kW, 64nm radar (Pilothouse)
- Furuno FMD 811 radar remote display (Flybridge)
- Simrad AP28 autopilot control head (Pilothouse)
- Simrad AP20 autopilot control head (Flybridge)
- Simrad AP21 wired remote autopilot control
- Raytheon ST60 LCD depth display
- Interphase Twin Scope forward looking sonar (Flybridge)
- Icom IC-M127 VHF radio/hailer (Pilothouse)
- Standard Horizon VHF radio (Flybridge)
- (2) Ritchie Powerdamp 5" compasses

- Naiad Muultisea II stabilizer controls
- KVH Tracvision M5 HDTV Satellite TV system
- Wave WiFi wireless bridge, ethernet converter
- ACR remote searchlight control
- Hart Tank Tender
- Sealand Tankwatch 4 holding tank monitor

## Deck Equipment

---

- Maxwell 3500 Vertical electric windlass w/PH, FB, & foot controls
- Delta galvanized plow style anchor
- Dual anchor rollers
- 300' chain anchor rode
- Bow pulpit w/rails
- Bow rail
- Stainless steel rub rail
- Port & Starboard boarding gates
- Extended Stamoid cockpit canopy top (2014)
- Stainless steel ladder w/fiberglass non-skid treads to flybridge
- Cockpit helm station w/wheel, engine & thruster controls
- Molded fiberglass cockpit storage cabinet
- Cockpit boarding steps, can be mounted port or starboard
- Varnished teak caprail
- Rupp removable outriggers mounted port & starboard caprail
- (4) Lee rod holders in caprail
- Salt water fresh water wash down
- Transom gate
- Integrated fiberglass swim platform
- Swim ladder
- Transom hot/cold shower
- (2) safety stainless hoop rails on platform
- Dockside TV/phone inlets fore & aft
- Transom shore power inlets
- International navigation lights
- Courtesy lights
- Cockpit spreader lights
- ACR RCL 100 searchlight
- Overhead cockpit stereo speakers
- (3) windshiel wipers w/washers
- Sunbrella covers for teak caprail, side windows, deck hatches
- Textiline windshield cover
- Electric air horns

---

## Flybridge & Boat Deck

---

- Stamoid Bimini top (2014)
- Marquipt 1000 lb hydraulic davit
- Novurania 335DL 11' RBI tender w/Yamaha 25hp 4 stroke outboard
- Radar arch w/dome lights
- Centerline helm station w/stainless steel destroyer wheel & complete instrumentation
- Lexan Venturi windshield
- Pompanette ladder back helm & companion chairs on stainless steel pedestals
- Molded fiberglass L -shaped settee w/cushions
- (2) teak trim cocktail tables on stainless steel pedestals
- Sunbrella covers for settee, tables, helm station, helm chairs, tender (2013)
- Zodiac Offshore 6 person life raft in cannister w/stainless steel mount
- Norcold AC/DC 3.2 Cu. ft. refrigerator
- Sink w/faucet
- Boat deck stainless steel stanchions & rails

---

## Engine Room & Mechanical Equipment

---

- Twin Cummins 6CTA 8.3-M3, 450 hp engines
- ZF 301A transmissions w/2:1 reduction gears
- Naiad Stabilizers w/Multisea II controls
- Sealand VacuFlush sanitation system w/all new hoses (2014)
- Cruisair 54,000 BTU reverse cycle air conditioning system w/4 compressors
- SMX2 AC/Heat controls throughout
- Central vacuum system
- Stainless steel engine beds
- Glendinning engine synchronizers
- (2) bilge blowers
- (3) Aluminum epoxy painted fuel tanks
- Dual Racor 1000 MA fuel filters on main engines
- Racor 500 MA fuel filter, generator
- Copper fuel system with manifolds and sight gauges
- Easy access cleanouts on fuel tanks
- Fresh water washdown, engine room
- Flo Jet saltwater pump with strainer
- (4) Groco sea water strainers for mains and generator
- (5) Rule 3700 bilge pumps
- Reverso oil changing system for main engines, transmissions and generator
- Bennett trim tabs, 12" X 54"
- Hynautic hydraulic steering
- Hynautic hydraulic engine controls
- Wesmar bow thruster (3 station) - Dual Prop model DPC12E

- Tides dripless shaft & rudder seals
- Aquamet 22 stainless steel shafts
- Spur line cutters on shafts
- 4 blade nibral propellers
- 20 gal hot water tank located under master berth
- Whale Gusher hand bilge pump
- Bilge high water alarm
- 3 bronze gate valves at bulkheads
- (2) Rule shower sump pumps
- Fireboy FE-241 fire suppression system
- Underwater exhaust

---

## Electrical Equipment

---

- 12 kW Northern Lights generator in sound shield w/1800 hrs.
- Xantrex Heart Interface Link 2000 inverter/charger
- Charles Marine Iso-Boost automatic isolation and boosting transformer
- (12) 6V AGM batteries , house banks (2011)
- (2) 24V AGM battery banks, engine start (2014)
- 12V AGM generator start battery
- 24V AGM battery bank, bow thruster (2013)
- Battery chargers, engines & thruster
- Central bonding system
- Vanner Voltmaster converter

---

## Hull & Construction

---

**10/2014: Bottom was stripped, new barrier coat and anti-fouling paint applied.** Offshore utilizes the best FRP materials available including solid hand laminated "Knytex" bi & uni-directional fabric and vinylester resins below the waterline. This provides greater strength and reduced weight over conventional woven roving / mat construction. Above the water line closed cell "Core Cell" material is vacuum bagged to the same bi and uni-directional fabric using isothalic and vinylester resins. The hull is one integral laminated component. The main deck and cabin are one laminated component which is laminated to the hull. The boat deck, fly bridge and pilothouse roof are one fiberglass component which is laminated to the cabin structure. When these three individual modules are laminated together an extremely strong, rigid and water tight uni-structure is formed that meets or exceeds ABS requirements. Four massive full length stringers and multiple thwartship frames are laminated and bonded in the hull to minimize panel size and achieve incredible hull strength. The bilge areas are divided into four sections to further increase water tight integrity. Each section has it's own automatic bilge pump and all can be made common by gate valves in each section. Massive main bulkheads consist of multiple layers of balsa cored fiberglass and each are insulated with multiple insulation materials designed for

each bulkhead's sound requirements. Engineered insulation at engine room overhead & bulkheads and master stateroom bulkheads utilize multiple layers of varying types of sound deadening/sound absorbing materials to minimize engine noise and to also insure maximum privacy. Incorporated in the hulls construction are two heavily laminated rub rails that are structural components of the hull. The substantial rub rails, capped with solid stainless steel, increase the strength of the hull sides & protect the hull when coming alongside a piling or dock. The joint between cabin sides and overhead is bonded with frp and finished in gel coat instead of caulking. The running gear is fully protected by an extended keel which also adds stability.

## Remarks

---

Under the same ownership for 14 years, there has been no expense spared to keep LESTIQUE in pristine condition. Always stored under cover during the summer months, her gelcoat is flawless and shines like new. All systems and electronics have been constantly upgraded to make her ready to cruise anywhere on a moments notice. Only offered for sale as her owner has purchased a larger Offshore. BRING OFFERS!

## Exclusions

---

While every effort has been made to list all included pertinent equipment aboard LESTIQUE, there are some personal belongings aboard. Prospective purchasers should assume any item not specifically mentioned herein will not convey at closing. Please refer any items in question to the listing broker.

**THE NAME "LESTIQUE" IS RESERVED AND MUST BE REMOVED AFTER CLOSING.**

## Исключения

---

При продаже яхты исключаются личные вещи владельца.

## Отказ от ответственности

---

Компания предоставляет описание судна или яхты добросовестно, но не может гарантировать точность этой информации, а также не ручается за техническое состояние. Покупатель должен проинструктировать своих агентов или оценщиков исследовать представленную информацию более подробно, по собственному желанию. Продажа судна или яхты, изменение цены или снятие с продажи будет происходить без предварительного уведомления.

# ФОТОГРАФИИ

**Сокпит**



**Side Deck**



**Salon Forward**



**Salon Port**



**Salon Starboard**



**Salon Aft**





**Salon Settee Storage**



**Galley**



**Galley**



**Salon/Galley Storage Cabinet**



**Pilothouse**



**Pilothouse Stidd Chairs**





**Pilothouse Aft**



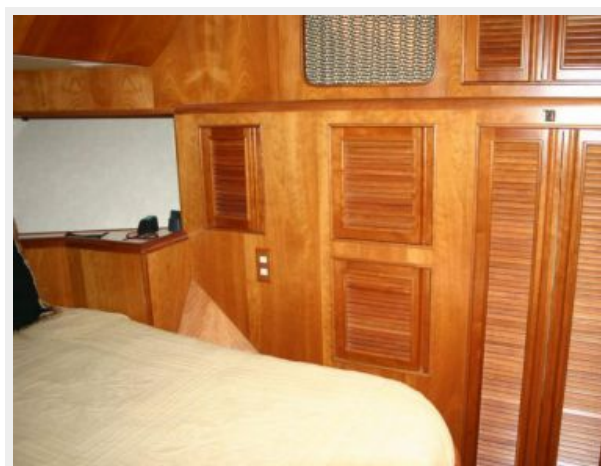
**Master Stateroom**



**Master Stateroom Port**



**Master Stateroom Starboard**



**Master Head**



**Lower Companionway**



**Washer & Dryer**



**Port Guest Stateroom**



**Starboard Guest Stateroom**



**Guest Head**



**Flybridge Aft**



**Flybridge Helm**







# КОНТАКТЫ

---

Андрей Шестаков (Andrey Shestakov) – ведущий яхтенный брокер отдела продаж яхт и судов компании Shestakov Yacht Sales Inc. Официальный представитель Shestakov Yacht Sales Inc. для русскоговорящих клиентов в центральном офисе компании в Майами/Форт Лодердейл/Флорида/США.

## Контактная информация

---

Email: [andrey@shestakovyachtsales.com](mailto:andrey@shestakovyachtsales.com)

Web: [shestakovyachtsales.com](http://shestakovyachtsales.com)

## Телефоны

---

Краснодарский край: **+7(918)465-66-44**

США, Майами, Флорида: **+1(954)274-4435**

## Время работы

---

Понедельник – Суббота: **9:00 - 21:00**  
EDT

Воскресенье: **Закрето**

## Адрес

---



Harbour Towne Marina, 850 NE 3rd St,  
STE 213, Dania, FL 33004