

# 49FT 2008 HUNTER 49 THE ULTIMATE HUNTER — HUNTER



**Судостроитель:** HUNTER

**Год постройки:** 2008

**Модель:** Cruising/Racing Sailboat

**Цена:** ЦЕНА ЯХТЫ ПО ЗАПРОСУ

**Местонахождение:** United States

**Длина общая:** 49' 0" (14.94m)

**Ширина:** 14' 9" (4.50m)

**Макс. осадка:** 5' 6" (1.68m)

Купить 49ft 2008 Hunter 49 The Ultimate Hunter 49/50 — HUNTER а также выбрать подходящую вам яхту из нашего каталога яхт вам поможет опытный яхтенный брокер Андрей Шестаков. На сегодняшний день компания Shestakov Yacht Sales Inc. имеет большое количество яхт в собственном списке продаж, а также тесно сотрудничает со всеми крупными яхтенными производителями по всему миру.

Для того чтобы купить яхту 49ft 2008 Hunter 49 The Ultimate Hunter 49/50 — HUNTER а также проконсультироваться по любому вопросу связанному с покупкой, продажей, чартером яхт позвоните по телефону **+7(918)465-66-44**.

# ОГЛАВЛЕНИЕ

ОГЛАВЛЕНИЕ	2
ХАРАКТЕРИСТИКИ	4
Основная информация	4
Размеры	4
Скорость, вместимость и масса	4
Размещение	4
Корпус и палуба	4
Информация о двигателе	5
ПОДРОБНОЕ ОПИСАНИЕ	6
Introduction	6
Broker's Comments	6
Accommodations	6
Factory Upgrades	7
Upgrades and Enhancements	7
Electronics	8
Hull & Deck	8
Sails & Rigging	8
General Safety Equipment	9
Manufacturer Provided Description	9
Исключения	9
Отказ от ответственности	9
ФОТОГРАФИИ	10
Hunter 49 Layout	10
Hunter 49 Galley	10
Hunter 49 Main Salon	10
Hunter 49 Ice Maker	10
Hunter 49 Dinette	10
Hunter 49 Main Salon	11

---

Hunter 49 Main Salon looking Aft	11
Hunter 49 Main Salon Multi Display TV	11
Hunter 49 Owner's Stateroom	11
Hunter 49 Navigation Station	11
Hunter 49 Main Salon Portside	11
Hunter 49 Port Guest Stateroom	12
Hunter 49 Port Guest Stateroom	12
Hunter 49 Starboard Guest Stateroom	12
Hunter 49 Port Helm	13
Hunter 49 Chartplotter	13
Hunter 49 Starboard Helm	13
<b>КОНТАКТЫ</b>	<b>14</b>
Контактная информация	14
Телефоны	14
Время работы	14
Адрес	14

# ХАРАКТЕРИСТИКИ

## Основная информация

Тип судна: Cruising/Racing Sailboat

Подкатегория: Cutter

Модельный год: 2008

Год постройки: 2008

Страна: United States

## Размеры

Длина общая: 49' 0" (14.94m)

Длина по ватерлинии: 43' 10" (13.36m)

Ширина: 14' 9" (4.50m)

Макс. осадка: 5' 6" (1.68m)

Длина привального бруса: 49' 11"  
(15.21m)

## Скорость, вместимость и масса

Водоизмещение: 32813 Pounds

Вместимость воды: 200 Gallons

Вместимость сточного бака: 52 Gallons

Объем топливного бака: 150 Gallons

## Размещение

Всего коек: 6

Всего ком. состава: 2

## Корпус и палуба

Материал корпуса: Fiberglass

## Информация о двигателе

---

**Двигатели:** 1

**Производитель:** Yanmar

**Модель:** 47H4-HTE

**Тип двигателя:** Inboard

**Тип топлива:** Diesel

---

# ПОДРОБНОЕ ОПИСАНИЕ

---

## Introduction

---

Every once in awhile, an exceptional boat comes on the market that is heads and shoulder above the competition. Sweet Melissa is such a boat. Dozens of this popular aft cockpit Hunter 49 and 50 have been built, but none match the upgrades, enhancements and success of Sweet Melissa.

The knowledgeable owner is an industrial design engineer, an experienced sailor and previous Hunter owner. He lavishly prepared this Hunter 49 to be the ultimate in performance, comfort and convenience. Numerous ingenious enhancements were made to the mechanical, electrical and plumbing systems to improve the livability, reliability, durability and performance.

The Hunter 49 was awarded "Boat of the Year" Honors from Cruising World Magazine for her luxurious accommodations, great looks and advanced design.

Twice in the past two years, Sweet Melissa was honored as the fastest boat in the highly competitive St Petersburg to Isla Mujeres, Mexico race.

If you are seeking a comfortable, easy to handle, easy to maintain and dependable boat that will be exhilarating to sail, I invite you to seriously consider this Hunter 49.

## Broker's Comments

---

After sailing Sweet Melissa nearly 500 miles from Florida to Mexico, I was both surprised and impressed. I was surprised how fast she sailed in light winds. Certainly any boat will move quickly with strong enough winds and Sweet Melissa did sustained long periods of 10+ knots with just the main, staysail and jib. However, when the wind was from 5 to 10 knots, she would do half the wind speed, which is amazing for such a large boat.

When the storm hit and the waves were over 20 feet, Sweet Melissa sliced through the waves cleanly and quickly without pounding. I was impressed that there wasn't any creaking inside the boat as she worked her way through rough sea and how comfortable I was down below when I was off watch. Even in challenging conditions, Sweet Melissa is set up to be an easy boat to sail. Whereas a 49' boat racing to Mexico would carry a crew of 6 to 10. We did the trip comfortably with only 4 people.

In 40 years, Hunter has come a long way from being an inexpensive boat entry level boat, to one of the better yacht builder in the world. Melissa is a great boat, owned by a great owner and is in great condition. She's is ready to go on her next great adventure.

## Accommodations

---

**FORWARD CABIN** Cabin Lighting, Electrical Outlets, AC/DC Hanging Lockers, (2) Cedar Lined Hatches, Deck Opening w/Screens Head, Private w/Vanity, Corian Countertop & Opening Hatch Mattress, Innerspring Shower Stall Compartment w/Pump Smoke & Carbon Monoxide Detectors Storage Cabinet, Drawers, Shelving Vanity, Ensuite w/Corian Countertops **MAIN HEAD (AFT)** Access Door, Dual Electrical Outlets, AC and DC Hatch, (1) Deck, Ports (3) Opening Shower Stall w/Adj. Shower Head, Seat and Sump Pump Storage Compartments Vanity w/Corian Countertop **NAVIGATION STATON** 12 Volt Switching System Chair Custom Swiveling Chart Table, w/Adjustable Light Electrical Outlets, AC/DC w/Jack Space for Electronics Storage Cabinets, Plotting Gear **MAIN SALON** Accord Shades Cabin Lighting, Courtesy Floor Lighting Deck Side Windows, Fixed w/Shades Deck Windshield Ports, Fixed Deluxe Cushion/Fabric Package Dinette Table Convertible to Berth Dorade Vents (2) Electrical Outlets AC & DC Everwear Gloss Laminate Sole Cherry Finish Laminate Handrails, Hardwood Both Sides Hatches (2) Deck, Opening w/Screens Leaf, Removable for Dinette Table Ports, (2) Hull, Fixed Selected Hardwood Trim Shade Package, Supreme Smoke & Carbon Monoxide Detectors Storage Lockers & Shelving **GUEST CABINS** Berth, dbl. or Queen w/Innerspring Mattress & Bedding Package Cabin Lighting Electrical Outlets, AC & DC Hanging Locker (1) Cedar Lined Hanging Wet Locker, Port Side Headboard Padded, Lounge Chair Ports/Hatches Opening w/Screens Private Entrance to Head Storage Cabinet Storage Drawers/Bins **GALLEY** Corian Countertops w/Backsplash Hatch (1) Deck, Opening Dish Setting Pkg. w/Lighted Self-Draining Storage Cabinet Electrical Outlet, AC Faucet Chrome Pull Out Dual Function Freezer, Top Opening Fresh Water System, Hot & Cold Ice Maker Microwave/Coffeemaker Combo Ports (2) Opening w/Screens Range Hood w/Light & Fan Refrigerator, Front Opening SS Sinks, Dbl. SS w/Cutting Board Storage Cabinets/Drawers/Shelving Stove, 3 Burner LPG Gimballed w/Oven Waste Bin, Built In

## Factory Upgrades

Furling Mast w/Vertical Battens, Inverter w/Link 1000, Electric Winch Upgrade, Quiet Flush Heads Cockpit Stereo Fridge & Freezer Oceanair Shades Memory Foam Mattress Raymarine ST60 Tridata Repeater Raymarine St 60 Wind Air Conditioning System (UPGRADED) Bow Thruster 6 hp Electric Winch Upgrade Port Helm Station Winch #54 Raymarine 7001+Autopilot Smart Controller Wireless Remote TV Antenna Package Ultra-Leather Interior Cushions

## Upgrades and Enhancements

- Re-engineered electrical system for better reliability and capacity
- Re-engineered and strengthened anchor platform with Spinnaker attachment
- Re - engineered Fuel system to included constant polishing system
- Re-engineered Waste system to reduce holding tank odor
- Re-engineered Air conditioning system to have condensate drain into grey water tank used for flushing heads.
- Relocated House Battery Banks lower in the boat for greater stability.

- Re-engineered electrical system to provide more reliable recharging of House Battery Banks
- Engineered a fresh water flush system for Engine and Generator
- Upgraded sea water strainers for engine and generator
- Navigation System interfaced with Entertainment System - Can watch TV/Movies and see chart plotter on any of 5 TVs
- Satellite TV
- Locomotive Horn on mast with separate compressor
- Performance Main, Staysail and Genoa
- Re-designed cockpit cushions with back bolsters

## Electronics

---

The Best integration of TV's with other systems we've seen. TV's in all three Staterooms have DVD players and all TV's have multi function displays that Interface with Navigation, Satellite antenna, Sat radio and sonar. Convenient to watch a movie while viewing chartplotter and radar

Garmin GPSmap 4212 Cockpit Chartplotter Garmin GPS 5208 Nav Station Chartplotter (2)  
 Raymarine ST70 Multifunction Color Displays (2) Raymarine Depth Speed Repeater Satellite TV  
 Antenna 2 Raymarine Depth Speed Raymarine Speed Raymarine Depth 1 Raymarine Wind  
 Machine 1 Digital Engine gauge Raymarine Auto pilot Wireless Auto pilot Control Weather Sat  
 Sat radio Interfaced Sat TV and DVD system Sony stereo system with 4 speakers Interfaced with  
 Sat TV and Sat Radio system Fish finder transducer 36 Mile Radar Cell Phone repeater system

## Hull & Deck

---

Anchor Roller, Dbl. Offset Anchor Well w/Space for Rode/Chain Anchor Windlass, Electric  
 Stainless Steel Bow Pulpit Reinforced Cockpit Arch, SS w/Mainsheet Traveler Dorade Vents (2)  
 Fresh Water Hook-up, Dockside Hatches, Opening Deck w/Screens HKT Kevlar Hull  
 Reinforcement Hull, FRP/Balsa Sandwich Above Waterline, Solid FRP Bottom Hull, Structural  
 Grid Reinforcement Lifelines, Dbl. w/3 Gates & Stanchions Lockers, (2) Transom Storage LPG  
 Tank Storage for (2) Bottles Maxguard Gelcoats for UV Protection Mooring Cleats, (8) Stainless  
 Steel Non-skid Deck, Ports, (2) Fixed Ports (10) Opening w/Screens Rubrail, w/SS Insert  
 Rudder, Balanced Spade w/SS Shaft Sail Locker, Fwd w/Watertight Bulkhead Swim Platform  
 w/SS Telescoping Ladder Through Bolted Hull to Deck Joint w/Rubrail, Fittings Windshield  
 Fixed Ports, w/Cover Extended side curtail for Bimini Cockpit Cushions with Seat Backs

## Sails & Rigging

---

Owner ordered this Hunter 49 with a cutter rig for better performance. Selden In Mast Main  
 Furling System Self Tacking StaySail Furling System Boom Vang Internal Halyards Led to  
 Cockpit Jib Furling System, Spinnaker and gear Traveler, Arch Mounted for Mainsheet Winch  
 Handles, Winches (2) Rigging 2-Speed Electric Self Tailing Winches Winch (1) at Port Helm, 2-



Speed Electric Self-Tailing Winch on Cabin Top Windex® Wind Indicator Anchor Platform re-engineered and strengthen to old tack for Spinnaker

---

## General Safety Equipment

---

Air Horn & Fog Bell Anchor & Line Carbon Monoxide & Smoke Detectors Emergency Tiller Fire Extinguishers Handheld & System GFI Receptacles Hand-Held Flares, Life Jackets High Bilge Water Alarm & Pump NMMA Certification on All Systems Reference Book, Chapmans Piloting Throwable Floation Cushion

---

## Manufacturer Provided Description

---

A luxurious passagemaker with a versatile floor plan for total extended offshore cruising, the Hunter 49 offers a complete range of live aboard accommodations and outstanding entertainment features. With an overall length of 49 feet 11 inches , plus a 14 feet 5 inch beam and 6 feet 9 inches of salon headroom, the Hunter 49 is a BIG boat with impressive interior volume.

Driving the Hunter 49's new hull is a specially engineered sail plan that achieves maximum efficiency while maintaining the Hunter trademark of single-handed sail-ability, which is a great feature for a boat of this size. Components aboard the Hunter 49 include Hunter's famous mainsheet traveler arch, backstayless B & R rig, a battened full roach main sail, and two headsail options: single self-tacking jib or self-tacking staysail with overlapping jib. A dual-ended mainsheet allows adjustments from both the cockpit and companionway, and all sheets and halyards end at the cockpit.

---

## Исключения

---

При продаже яхты исключаются личные вещи владельца.

---

## Отказ от ответственности

---

Компания предоставляет описание судна или яхты добросовестно, но не может гарантировать точность этой информации, а также не ручается за техническое состояние. Покупатель должен проинструктировать своих агентов или оценщиков исследовать представленную информацию более подробно, по собственному желанию. Продажа судна или яхты, изменение цены или снятие с продажи будет происходить без предварительного уведомления.

# ФОТОГРАФИИ

### Hunter 49 Layout



### Hunter 49 Main Salon



### Hunter 49 Galley



### Hunter 49 Ice Maker



### Hunter 49 Dinette



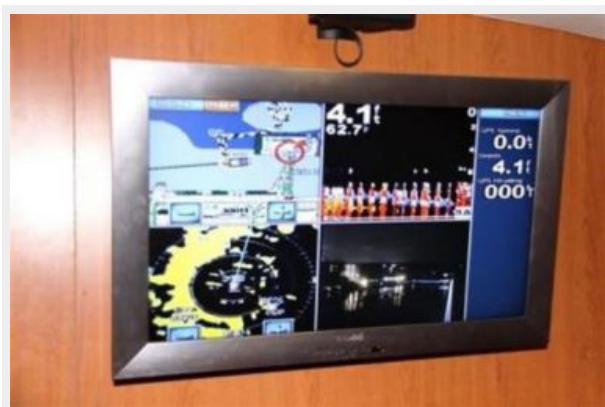
**Hunter 49 Main Salon looking Aft**



**Hunter 49 Main Salon**



**Hunter 49 Main Salon Multi Display TV**



**Hunter 49 Owner's Stateroom**



**Hunter 49 Main Salon Portside**



**Hunter 49 Navigation Station**





### Hunter 49 Port Guest Stateroom



### Hunter 49 Port Guest Stateroom



### Hunter 49 Starboard Guest Stateroom



**Hunter 49 Port Helm**



**Hunter 49 Chartplotter**



**Hunter 49 Starboard Helm**



# КОНТАКТЫ

---

Андрей Шестаков (Andrey Shestakov) – ведущий яхтенный брокер отдела продаж яхт и судов компании Shestakov Yacht Sales Inc. Официальный представитель Shestakov Yacht Sales Inc. для русскоговорящих клиентов в центральном офисе компании в Майами/Форт Лодердейл/Флорида/США.

## Контактная информация

---

Email: [andrey@shestakovyachtsales.com](mailto:andrey@shestakovyachtsales.com)

Web: [shestakovyachtsales.com](http://shestakovyachtsales.com)

## Телефоны

---

Краснодарский край: **+7(918)465-66-44**

США, Майами, Флорида: **+1(954)274-4435**

## Время работы

---

Понедельник – Суббота: **9:00 - 21:00**  
EDT

Воскресенье: **Закрито**

## Адрес

---



Harbour Towne Marina, 850 NE 3rd St,  
STE 213, Dania, FL 33004