

MERLIN — DALE NELSON



Builder: DALE NELSON

Year Built: 2003

Model: Motor Yacht

Price: PRICE ON APPLICATION

Location: United Kingdom

LOA: 39' 7" (12.06m)

Beam: 12' 3" (3.73m)

Min Draft: 4' 1" (1.24m)

Max Speed: 27 Kts. (31 MPH)

Our experienced yacht broker, Andrey Shestakov, will help you choose and buy a yacht that best suits your needs **MERLIN — DALE NELSON** from our catalogue. Presently, at Shestakov Yacht Sales Inc., we have a wide variety of yachts available on our sale's list. We also work in close contact with all the big yacht manufacturers from all over the world.

If you would like to buy a yacht **MERLIN — DALE NELSON** or would like help answering any questions concerning purchasing, selling or chartering a yacht, please call **+1(954)274-4435**

TABLE OF CONTENTS

TABLE OF CONTENTS	2
SPECIFICATIONS	4
Overview	4
Basic Information	4
Dimensions	4
Speed, Capacities and Weight	4
Accommodations	4
Hull and Deck Information	5
Engine Information	5
DETAILED INFORMATION	6
Broker's Comments	6
Construction	6
Machinery	7
Electrical Systems	8
Plumbing Systems	9
Tankage	10
Navigation Equipment	10
Domestic Equipment	11
Accommodation	12
Deck Equipment	13
Exclusions	15
Disclaimer	15
PHOTOS	16
CONTACTS	26
Contact details	26
Telephones	26
Office hours	26
Address	26

SPECIFICATIONS

Overview

These stunningly well-built Nelsons display an unrivalled level of craftsmanship, twinned with exceptional rough-weather handling and crew comfort. This 2003 one-owner 38 is full option - with heating, watermaker, E-Wide series nav., generator and must be viewed.

Basic Information

Category: Motor Yacht

Sub Category: Semi-Displacement

Model Year: 2003

Year Built: 2003

Country: United Kingdom

Dimensions

LOA: 39' 7" (12.06m)

LOD: 39' 7" (12.06m)

Beam: 12' 3" (3.73m)

Min Draft: 4' 1" (1.24m)

Speed, Capacities and Weight

Max Speed: 27 Kts. (31 MPH)

Displacement: 26455.47144 Pounds

Water Capacity: 430 Gallons

Fuel Capacity: 1363 Gallons

Accommodations

Total Cabins: 2

Total Berths: 6

Total Heads: 2

Hull and Deck Information

Hull Material: GRP

Deck Material: Teak

Hull Configuration: Semi-Displacement

Hull Designer: Dale Nelson / TT

Engine Information

Engines: 2

Manufacturer: Yanmar

Model: 6LY2

Engine Type: Inboard

Fuel Type: Diesel

DETAILED INFORMATION

Broker's Comments

The Dale Nelson is a motoryacht needing little introduction to the cognoscenti of motor-cruising. From her fine-entried and immensely capable commercially-derived TT hull, to her simply exemplary level of craftsmanship – the combination is much imitated, but never bettered.

“MERLIN” was built for her owners as a practical, sea-kindly cruiser. She has notched up just short of 14,000 Nautical Miles – from the breath-taking Western Isles of Scotland to the calm of the Gironde in France – she has never let them down. Consistent maintenance, largely by the team who built her, has ensured that she is upgraded as required, and presents incredibly for a yacht with this many miles under her keel.

Her interior joinery is exquisite, with touches simply unattainable by most other builders, and this quality will last and last - meaning that age has not, and will not diminish and her original beauty. She is heated, fitted with watermaker, new electronics, and is actually far nearer 40' than her stated 38' – meaning that her aft cabin accommodation feels roomy and yet cosy. She is very much a working sea-boat from her stout deck gear to her sensible davits – and very much ready to roam again.

Construction

RCD Status: The yacht conforms to the essential safety requirements of Directive 94/25EC (Recreational Craft Directive) and is categorized A.

Hull, Deck & Superstructure Construction:

- Solid laminate GRP with blue gel coated hull and varnished teak badging.
- White GRP superstructure.
- Rubber “D” fendering and rubber spray rails.
- Fully teak laid aft deck, side and fore decks.
- Teak companionway in the aft deck doors.
- Aft deck lockers with GRP lids.

- Cushion backs, bases and infill to make centre seat.
- Epoxy treatment to underwater.

Interior Finish:

- Interior fittings in chrome.
- American cherry timber and veneer finished with semi-gloss varnish.
- Alcantara to side and overhead linings throughout.
- Scatter cushions.
- Carpet to cabin soles.
- Timber floors with inlay to wheelhouse and galley.
- Timber wheelhouse and galley steps.
- Upholstered seating in dinette and wheelhouse.
- Curtains to wheelhouse and all cabins.
- Grab handles throughout.
- Grab handle additional to outboard of pilot seat in wheelhouse.
- Interior helm steering wheel – covered – tan colour.
- Exterior helm steering wheel- covered – light grey colour.

Machinery

Engine & Gearboxes:

- Twin Yanmar 6LY2 (M) 420hp turbo charged diesel engines.
- Micro commander electronic controls at both helm station.
- The engines are flexibly mounted and have a sea water filter to each engine.
- Automatic fire extinguisher to the engine room is a standard fitting.
- High quality sound proofing to engine room.

Maintenance & Performance:

- The engines have been regularly maintained, c. 1100 hours run at October 2014.
- Estimated 27 knot maximum speed.

Propulsion & Steering:

- Dual Hydraulic steering, greasers to rudder tubes.
- Stainless steel emergency tiller.
- Lasdrop type stern glands four bladed propellers.
- Rope cutters Fitted.
- Trim tabs with dual station controls, Volvo BP 600B bow thruster with interior and exterior controls.

Other Mechanical Equipment:

- High Quality sound proofing to engine room.
- Flexible hose wet exhaust with main engine muffler and twin station HMI temperature alarms.
- Two Engine room fans.

Electrical Systems

Voltage Systems:

- 12 volt system and 240 volt system.

Battery Banks:

- 2 engine batteries and 4 domestic batteries.
- Sealed and vented battery boxes, cross over battery link switch.
- Battery voltage meter BMV501.

Battery Chargers:

- Master volt inverter/ battery charger and distribution system connected to the hot water immersion tank heater and shore power with Master Volt east control unit in wheelhouse.

Alternators:

- 80Ah alternator fitted.

Generator:

- Generator type HFL 4.0Kva/3.6Kw.
- Generator hours 837 hours.

Shore Power:

- Shore power with master volt easy control unit in wheelhouse.
- 240V shore power lead.

Plumbing Systems

Fresh Water & Water Heating System:

- Freshwater approximately 95 Gallons (430 litres), hot water immersion tank approximately 9 gallons (40 litres)
- Pressurised hot and cold water.
- Freshwater washers to wheelhouse front screens.
- Freshwater tap to engine room.
- Freshwater maker – Aquafresh
- Freshwater Shower connection to transom with control in aft heads.

Bilge Pumps:

- Three electric pumps with automatic switches and one manual bilge pump with suction

inlets either side of engine room.

- Bilge alarms to engine room bilges.

Grey & Black Water:

- Black water tank approximately 18 gallons (82 litres) connected to forward toilet.
- Deck suction outlet and macerator for overboard discharge.
- Odour filter fitted to waste tank breather.

Tankage

- Tank Tender gauges to water/fuel/waste tanks and on-deck fillers.

Fuel:

- 300 Gallons / 1363 litres capacity approx.

Fresh water:

- 95 Gallons / 430 litres capacity.

Grey/Blackwater holding tanks:

- 18 gallons / 82 litres capacity

Navigation Equipment

At helm console:

- Steering compass.
- Raymarine ST 60 Speed.
- Raymarine ST60 Depth.
- Raymarine E90/W Radar/ chart plotter c/w HD digital radome.

- ST 6002 Autopilot display with electronic compass.
- Raymarine wind speed and direction.
- Raymarine ST70 Wind speed and direction indicator.
- GPS McMurdo 406 GPS EPIRB.
- Navtec weather fax – type ICS Nav 6 Plus digital display.
- Binoculars / vhf holder.

Communications Equipment:

- Ray DSC VHF fixed with separate speaker at wheelhouse helm.

Domestic Equipment

Galley:

- Galley to starboard with many custom features.
- American Cherry panelling to sideling above galley worktop.
- Galley top moulded in Corian type Wilsonart material with Corian sink, waste bin entry and moulded fiddle rail.
- Ample galley stowage and beautifully hand crafter solid time joinery, outboard lockers with sliding doors and stowage racks. Large storage cabinets and drawers.
- Refrigerator.
- Ramoska cooker, electric two burner hob with fiddle rails to hob.
- Bottle storage rack fitted to forward bulkhead.
- Timber kitchen roll holder.
- Up steps to main saloon and wheelhouse.

Heads/Showers:

- Wash basin, mixer tap with hot and cold pressurized water.
- Shower, Manual Toilet, Lockers, Towel rail and Hanging hooks.

Heating & Ventilation:

- Eberspacher D5L diesel heating system throughout the boat (including both heads)

Lighting:

- Lighting throughout (dimnable in wheelhouse).
- Anchor light
- Navigation Light
- Search light handheld with external power point.
- Aft deck light mounted on mast.

Accommodation

Summary of Accommodation:

- Twin guest cabin up forward with a large centre double berth back aft.
- Forward guest cabin with large storage areas and access to heads compartment on portside.
- Forward cabin has an infill to make V berths into double berth.
- American Cherry and veneer – finished – two pack semi gloss varnish.
- Both cabins as well as the wheelhouse have curtains both curtains and grab rails throughout.
- Forward cabin has a bookcase to the aft bulkhead.

Forward cabin and en-suite heads compartment:

Dinette area to port of galley:

Wheelhouse:

- Helm position to port and pilot seat to starboard with footrests fitted to both positions.
- Helm and pilot seats with sliders and arm rests.
- Stowage beneath helm seat – custom bottle and glass stowage.
- Second fridge unit beneath pilot seat.
- Chart table is to starboard and removable and stowed at aft starboard end of wheelhouse when not in use.
- Book stowage and timber pencil tray at pilot position.
- Sofa to starboard and L-shaped seating to port.
- From aft of the main saloon one can access the aft deck above rot down to the owners cabin.

Aft Cabin & heads:

- Aft cabin has a large double berth and separate heads compartment, with ample stowage lockers.

Deck Equipment

General:

- Teak deck with 3 pairs of stainless steel mooring bollards.
- Navigation lights to international standards.
- Gas locker set into side decks.
- Stainless steel rail to aft deck with fender baskets.
- Teak boarding platform with stainless steel boarding ladder and swim ladder

Anchoring & Mooring Equipment:

- Sea water deck and anchor wash system to anchor locker.
- *Electric windlass controls at exterior helm.*
- *Electric windlass controls foot switches on foredeck.*

- 1 x 20kg Claw anchor – galvanized steel.
- 50m x 9.9mm chain galvanized steel.
- Chain locker with overboard drain.
- Seawater deck wash outlet on foredeck.

Seating Arrangements:

· *Wheelhouse:*

1. Sofa to starboard and L-shaped seating to port downstairs in the wheelhouse.
2. Helm position to port and pilot seat to port with footrests fitted to seats as well as sliders and arm rests.

· *Dinette:*

1. Generous seating to port with table.
2. Seating with upholstered infill converts to double berth.

Tender & Outboard:

- Avon 2.8 Air Rover complete with cover for when stowed on davits.
- Outboard motor Yamaha 4hp.
- Outboard motor canvas cover.

Safety Equipment:

- 6 man liferaft – Plastimo Cruiser – 3/2015
- Plastimo Rescue Buoy
- Spare anchor

Fire-fighting equipment:

- Fire extinguishers (serviceable type) throughout the boat with automatic system in engine

room.

- Fire blanket in galley.

Exclusions

Owner's personal belongings.

Disclaimer

The Company offers the details of this vessel or yacht in good faith but cannot guarantee or warrant the accuracy of this information nor warrant the condition of the vessel. A buyer should instruct his representatives, agents, or his surveyors, to investigate such details as the buyer desires validated. This vessel or yacht is offered subject to prior sale, price change, or withdrawal without notice.

PHOTOS

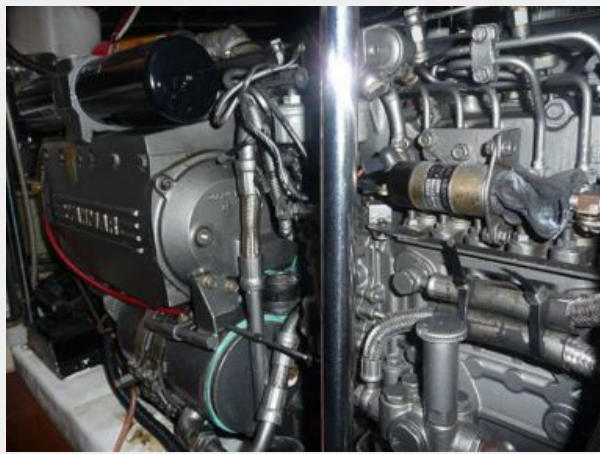








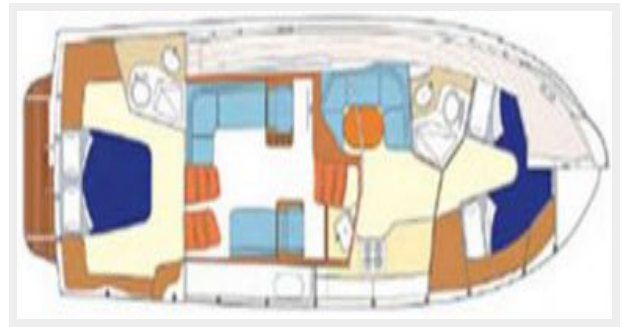












CONTACTS

Andrey Shestakov, leading yacht broker of the sales department of Shestakov Yacht Sales Inc. Shestakov Yacht Sales Inc., the official representative of the Miami/Fort Lauderdale FL headquarters.

Contact details

Email: andrey@shestakovyachtsales.com

Web: shestakovyachtsales.com/en/

Telephones

USA: +1(954)274-4435

Office hours

Monday – Saturday: **9:00 - 21:00** EDT

Sunday: **closed**

Address



Harbour Towne Marina, 850 NE 3rd St,
STE 213, Dania, FL 33004