

MERLIN — DALE NELSON



Судостроитель: DALE NELSON

Год постройки: 2003

Модель: Моторная яхта

Цена: **ЦЕНА ЯХТЫ ПО ЗАПРОСУ**

Местонахождение: United Kingdom

Длина общая: 39' 7" (12.06m)

Ширина: 12' 3" (3.73m)

Мин. осадка: 4' 1" (1.24m)

Макс. скорость: 27 Kts. (31 MPH)

Купить **MERLIN — DALE NELSON** а также выбрать подходящую вам яхту из нашего каталога яхт вам поможет опытный яхтенный брокер Андрей Шестаков. На сегодняшний день компания **Shestakov Yacht Sales Inc.** имеет большое количество яхт в собственном списке продаж, а также тесно сотрудничает со всеми крупными яхтенными производителями по всему миру.

Для того чтобы купить яхту **MERLIN — DALE NELSON** а также проконсультироваться по любому вопросу связанному с покупкой, продажей, чартером яхт позвоните по телефону **+7(918)465-66-44**.

ОГЛАВЛЕНИЕ

| | |
|-------------------------------|----|
| ОГЛАВЛЕНИЕ | 2 |
| ХАРАКТЕРИСТИКИ | 4 |
| Обзор | 4 |
| Основная информация | 4 |
| Размеры | 4 |
| Скорость, вместимость и масса | 4 |
| Размещение | 4 |
| Корпус и палуба | 5 |
| Информация о двигателе | 5 |
| ПОДРОБНОЕ ОПИСАНИЕ | 6 |
| Broker's Comments | 6 |
| Construction | 6 |
| Machinery | 7 |
| Electrical Systems | 8 |
| Plumbing Systems | 9 |
| Tankage | 10 |
| Navigation Equipment | 10 |
| Domestic Equipment | 11 |
| Accommodation | 12 |
| Deck Equipment | 13 |
| Исключения | 15 |
| Отказ от ответственности | 15 |
| ФОТОГРАФИИ | 16 |
| КОНТАКТЫ | 26 |
| Контактная информация | 26 |
| Телефоны | 26 |
| Время работы | 26 |
| Адрес | 26 |

ХАРАКТЕРИСТИКИ

Обзор

These stunningly well-built Nelsons display an unrivalled level of craftsmanship, twinned with exceptional rough-weather handling and crew comfort. This 2003 one-owner 38 is full option - with heating, watermaker, E-Wide series nav., generator and must be viewed.

Основная информация

Тип судна: Моторная яхта

Подкатегория: Semi-Displacement

Модельный год: 2003

Год постройки: 2003

Страна: United Kingdom

Размеры

Длина общая: 39' 7" (12.06m)

Длина палубы: 39' 7" (12.06m)

Ширина: 12' 3" (3.73m)

Мин. осадка: 4' 1" (1.24m)

Скорость, вместимость и масса

Макс. скорость: 27 Kts. (31 MPH)

Водоизмещение: 26455.47144 Pounds

Вместимость воды: 430 Gallons

Объем топливного бака: 1363 Gallons

Размещение

Всего кают: 2

Всего коек: 6

Всего ком. состава: 2

Корпус и палуба

Материал корпуса: GRP

Материал палубы: Teak

Комплектация корпуса: Semi-Displacement

Дизайнер корпуса: Dale Nelson / TT

Информация о двигателе

Двигатели: 2

Производитель: Yanmar

Модель: 6LY2

Тип двигателя: Inboard

Тип топлива: Diesel

ПОДРОБНОЕ ОПИСАНИЕ

Broker's Comments

The Dale Nelson is a motoryacht needing little introduction to the cognoscenti of motor-cruising. From her fine-entried and immensely capable commercially-derived TT hull, to her simply exemplary level of craftsmanship – the combination is much imitated, but never bettered.

“MERLIN” was built for her owners as a practical, sea-kindly cruiser. She has notched up just short of 14,000 Nautical Miles – from the breath-taking Western Isles of Scotland to the calm of the Gironde in France – she has never let them down. Consistent maintenance, largely by the team who built her, has ensured that she is upgraded as required, and presents incredibly for a yacht with this many miles under her keel.

Her interior joinery is exquisite, with touches simply unattainable by most other builders, and this quality will last and last - meaning that age has not, and will not diminish and her original beauty. She is heated, fitted with watermaker, new electronics, and is actually far nearer 40' than her stated 38' – meaning that her aft cabin accommodation feels roomy and yet cosy. She is very much a working sea-boat from her stout deck gear to her sensible davits – and very much ready to roam again.

Construction

RCD Status: The yacht conforms to the essential safety requirements of Directive 94/25EC (Recreational Craft Directive) and is categorized A.

Hull, Deck & Superstructure Construction:

- Solid laminate GRP with blue gel coated hull and varnished teak badging.
- White GRP superstructure.
- Rubber “D” fendering and rubber spray rails.
- Fully teak laid aft deck, side and fore decks.
- Teak companionway in the aft deck doors.
- Aft deck lockers with GRP lids.

- Cushion backs, bases and infill to make centre seat.
- Epoxy treatment to underwater.

Interior Finish:

- Interior fittings in chrome.
- American cherry timber and veneer finished with semi-gloss varnish.
- Alcantara to side and overhead linings throughout.
- Scatter cushions.
- Carpet to cabin soles.
- Timber floors with inlay to wheelhouse and galley.
- Timber wheelhouse and galley steps.
- Upholstered seating in dinette and wheelhouse.
- Curtains to wheelhouse and all cabins.
- Grab handles throughout.
- Grab handle additional to outboard of pilot seat in wheelhouse.
- Interior helm steering wheel – covered – tan colour.
- Exterior helm steering wheel- covered – light grey colour.

Machinery

Engine & Gearboxes:

- Twin Yanmar 6LY2 (M) 420hp turbo charged diesel engines.
- Micro commander electronic controls at both helm station.
- The engines are flexibly mounted and have a sea water filter to each engine.
- Automatic fire extinguisher to the engine room is a standard fitting.
- High quality sound proofing to engine room.

Maintenance & Performance:

- The engines have been regularly maintained, c. 1100 hours run at October 2014.
- Estimated 27 knot maximum speed.

Propulsion & Steering:

- Dual Hydraulic steering, greasers to rudder tubes.
- Stainless steel emergency tiller.
- Lasdrop type stern glands four bladed propellers.
- Rope cutters Fitted.
- Trim tabs with dual station controls, Volvo BP 600B bow thruster with interior and exterior controls.

Other Mechanical Equipment:

- High Quality sound proofing to engine room.
- Flexible hose wet exhaust with main engine muffler and twin station HMI temperature alarms.
- Two Engine room fans.

Electrical Systems

Voltage Systems:

- 12 volt system and 240 volt system.

Battery Banks:

- 2 engine batteries and 4 domestic batteries.
- Sealed and vented battery boxes, cross over battery link switch.
- Battery voltage meter BMV501.

Battery Chargers:

- Master volt inverter/ battery charger and distribution system connected to the hot water immersion tank heater and shore power with Master Volt east control unit in wheelhouse.

Alternators:

- 80Ah alternator fitted.

Generator:

- Generator type HFL 4.0Kva/3.6Kw.
- Generator hours 837 hours.

Shore Power:

- Shore power with master volt easy control unit in wheelhouse.
- 240V shore power lead.

Plumbing Systems

Fresh Water & Water Heating System:

- Freshwater approximately 95 Gallons (430 litres), hot water immersion tank approximately 9 gallons (40 litres)
- Pressurised hot and cold water.
- Freshwater washers to wheelhouse front screens.
- Freshwater tap to engine room.
- Freshwater maker – Aquafresh
- Freshwater Shower connection to transom with control in aft heads.

Bilge Pumps:

- Three electric pumps with automatic switches and one manual bilge pump with suction

inlets either side of engine room.

- Bilge alarms to engine room bilges.

Grey & Black Water:

- Black water tank approximately 18 gallons (82 litres) connected to forward toilet.
- Deck suction outlet and macerator for overboard discharge.
- Odour filter fitted to waste tank breather.

Tankage

- Tank Tender gauges to water/fuel/waste tanks and on-deck fillers.

Fuel:

- 300 Gallons / 1363 litres capacity approx.

Fresh water:

- 95 Gallons / 430 litres capacity.

Grey/Blackwater holding tanks:

- 18 gallons / 82 litres capacity

Navigation Equipment

At helm console:

- Steering compass.
- Raymarine ST 60 Speed.
- Raymarine ST60 Depth.
- Raymarine E90/W Radar/ chart plotter c/w HD digital radome.

- ST 6002 Autopilot display with electronic compass.
- Raymarine wind speed and direction.
- Raymarine ST70 Wind speed and direction indicator.
- GPS McMurdo 406 GPS EPIRB.
- Navtec weather fax – type ICS Nav 6 Plus digital display.
- Binoculars / vhf holder.

Communications Equipment:

- Ray DSC VHF fixed with separate speaker at wheelhouse helm.

Domestic Equipment

Galley:

- Galley to starboard with many custom features.
- American Cherry panelling to sidelining above galley worktop.
- Galley top moulded in Corian type Wilsonart material with Corian sink, waste bin entry and moulded fiddle rail.
- Ample galley stowage and beautifully hand crafter solid time joinery, outboard lockers with sliding doors and stowage racks. Large storage cabinets and drawers.
- Refrigerator.
- Ramoska cooker, electric two burner hob with fiddle rails to hob.
- Bottle storage rack fitted to forward bulkhead.
- Timber kitchen roll holder.
- Up steps to main saloon and wheelhouse.

Heads/Showers:

- Wash basin, mixer tap with hot and cold pressurized water.
- Shower, Manual Toilet, Lockers, Towel rail and Hanging hooks.

Heating & Ventilation:

- Eberspacher D5L diesel heating system throughout the boat (including both heads)

Lighting:

- Lighting throughout (dimnable in wheelhouse).
- Anchor light
- Navigation Light
- Search light handheld with external power point.
- Aft deck light mounted on mast.

Accommodation

Summary of Accommodation:

- Twin guest cabin up forward with a large centre double berth back aft.
- Forward guest cabin with large storage areas and access to heads compartment on portside.
- Forward cabin has an infill to make V berths into double berth.
- American Cherry and veneer – finished – two pack semi gloss varnish.
- Both cabins as well as the wheelhouse have curtains both curtains and grab rails throughout.
- Forward cabin has a bookcase to the aft bulkhead.

Forward cabin and en-suite heads compartment:

Dinette area to port of galley:

Wheelhouse:

- Helm position to port and pilot seat to starboard with footrests fitted to both positions.
- Helm and pilot seats with sliders and arm rests.
- Stowage beneath helm seat – custom bottle and glass stowage.
- Second fridge unit beneath pilot seat.
- Chart table is to starboard and removable and stowed at aft starboard end of wheelhouse when not in use.
- Book stowage and timber pencil tray at pilot position.
- Sofa to starboard and L-shaped seating to port.
- From aft of the main saloon one can access the aft deck above rot down to the owners cabin.

Aft Cabin & heads:

- Aft cabin has a large double berth and separate heads compartment, with ample stowage lockers.

Deck Equipment

General:

- Teak deck with 3 pairs of stainless steel mooring bollards.
- Navigation lights to international standards.
- Gas locker set into side decks.
- Stainless steel rail to aft deck with fender baskets.
- Teak boarding platform with stainless steel boarding ladder and swim ladder

Anchoring & Mooring Equipment:

- Sea water deck and anchor wash system to anchor locker.
- *Electric windlass controls at exterior helm.*
- *Electric windlass controls foot switches on foredeck.*

- 1 x 20kg Claw anchor – galvanized steel.
- 50m x 9.9mm chain galvanized steel.
- Chain locker with overboard drain.
- Seawater deck wash outlet on foredeck.

Seating Arrangements:

· *Wheelhouse:*

1. Sofa to starboard and L-shaped seating to port downstairs in the wheelhouse.
2. Helm position to port and pilot seat to port with footrests fitted to seats as well as sliders and arm rests.

· *Dinette:*

1. Generous seating to port with table.
2. Seating with upholstered infill converts to double berth.

Tender & Outboard:

- Avon 2.8 Air Rover complete with cover for when stowed on davits.
- Outboard motor Yamaha 4hp.
- Outboard motor canvas cover.

Safety Equipment:

- 6 man liferaft – Plastimo Cruiser – 3/2015
- Plastimo Rescue Buoy
- Spare anchor

Fire-fighting equipment:

- Fire extinguishers (serviceable type) throughout the boat with automatic system in engine

room.

- Fire blanket in galley.

Исключения

При продаже яхты исключаются личные вещи владельца.

Отказ от ответственности

Компания предоставляет описание судна или яхты добросовестно, но не может гарантировать точность этой информации, а также не ручается за техническое состояние. Покупатель должен проинструктировать своих агентов или оценщиков исследовать представленную информацию более подробно, по собственному желанию. Продажа судна или яхты, изменение цены или снятие с продажи будет происходить без предварительного уведомления.

ФОТОГРАФИИ

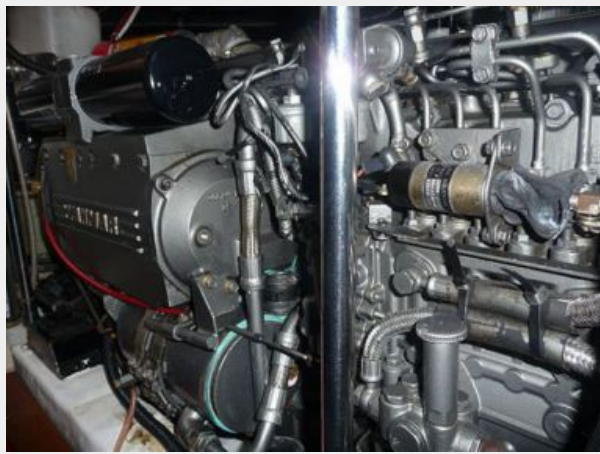








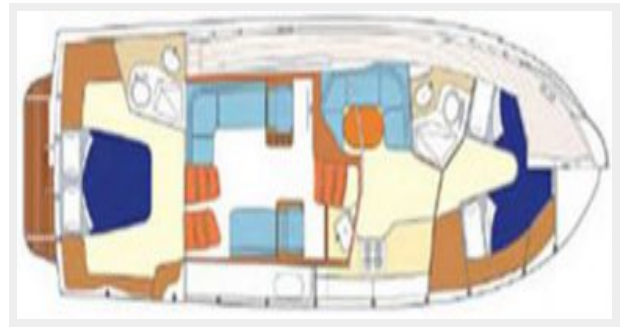












КОНТАКТЫ

Андрей Шестаков (Andrey Shestakov) – ведущий яхтенный брокер отдела продаж яхт и судов компании Shestakov Yacht Sales Inc. Официальный представитель Shestakov Yacht Sales Inc. для русскоговорящих клиентов в центральном офисе компании в Майами/Форт Лодердейл/Флорида/США.

Контактная информация

Email: andrey@shestakovyachtsales.com

Web: shestakovyachtsales.com

Телефоны

Краснодарский край: **+7(918)465-66-44**

США, Майами, Флорида: **+1(954)274-4435**

Время работы

Понедельник – Суббота: **9:00 - 21:00**
EDT

Воскресенье: **Закрето**

Адрес



Harbour Towne Marina, 850 NE 3rd St,
STE 213, Dania, FL 33004