

320 SCOUT LXF — SCOUT BOATS



Builder: SCOUT BOATS

Year Built: 2013

Model: Sport Fisherman

Price: PRICE ON APPLICATION

Location: United States

LOA: 32' 3" (9.83m)

Beam: 9' 10" (3.00m)

Min Draft: 1' 10" (0.56m)

Max Draft: 2' 5" (0.74m)

Cruise Speed: 35.628025922 Kts. (41 MPH)

Our experienced yacht broker, Andrey Shestakov, will help you choose and buy a yacht that best suits your needs 320 Scout LXF — SCOUT BOATS from our catalogue. Presently, at Shestakov Yacht Sales Inc., we have a wide variety of yachts available on our sale's list. We also work in close contact with all the big yacht manufacturers from all over the world.

If you would like to buy a yacht 320 Scout LXF — SCOUT BOATS or would like help answering any questions concerning purchasing, selling or chartering a yacht, please call +1(954)274-4435

TABLE OF CONTENTS

TABLE OF CONTENTS	2
SPECIFICATIONS	3
Overview	3
Basic Information	3
Dimensions	3
Speed, Capacities and Weight	3
Accommodations	4
Hull and Deck Information	4
Engine Information	4
DETAILED INFORMATION	5
Standard Equipment	5
Helm Station	5
Inner Console Berth	5
Hull, Deck and Cockpit	5
Optional Features	5
Optional Equipment	6
Exclusions	6
Disclaimer	6
PHOTOS	7
CONTACTS	19
Contact details	19
Telephones	19
Office hours	19
Address	19

SPECIFICATIONS

Overview

This luxury sportfisher model sports the fuel efficient NuV3 hull design which equates to a lower cost of ownership and less time at the fuel dock, a unique electronic hub wiring system that enables you to control the electronics from a remote key fob, optional forward seating electric back rests, and a beautiful new Azure blue hull color that showcases a clear coat and pearl-essence application. Stunning, fast, comfortable, and stylish all rolled into one. Whether you're cooking up a meal for your family in the bow on the optional grill, or fishing out of the cockpit with your friends, the 320 LXF sets a new standard in this size category.

Basic Information

Category: Sport Fisherman

Sub Category: Center Console

Model Year: 2013

Year Built: 2013

Country: United States

Vessel Top: Hardtop

Dimensions

LOA: 32' 3" (9.83m)

Beam: 9' 10" (3.00m)

Min Draft: 1' 10" (0.56m)

Max Draft: 2' 5" (0.74m)

Clearance: 7' 7" (2.31m)

Speed, Capacities and Weight

Cruise Speed: 35.628025922 Kts. (41 MPH) **Displacement:** 7100 Pounds

Water Capacity: 20 Gallons

Holding Tank: 10 Gallons

Fuel Capacity: 225 Gallons

Accommodations

Total Heads: 1

Hull and Deck Information

Hull Material: Composite

Deck Material: Fiberglass

Hull Color: Acqua Mist

Hull Finish: Plastic

Engine Information

Engines: 2

Manufacturer: Yamaha

Model: 300

Engine Type: Outboard

Fuel Type: Gas/Petrol

DETAILED INFORMATION

Standard Equipment

• Dual Swim Platforms w/ Center Walk Thru • Hydraulic Steering w/ Power Assist • Armstrong Dive Swim Ladder • Transom Door • 10" Pull Up Stern / Bow Cleats • (2) Spring Line 8" Cleats • (6) SS Flush Mount Gunnel Rod Holders • (4) Horizontal Under Gunnel Rod Storage • Aft Under Deck Systems Station w/ Storage • 30 Amp Shore Power w/ 50' Cord • 50 Amp Battery Charger • Port Aft Side Transom Storage • Port & Stbd Aft Floor Fish Boxes • Raw / Fresh Water Washdown w/ 20 Gallon Tank • Deluxe Leaning Post w/ Bait Well, Tackle Drawers, Cup Holders, Sink & Rod Holders • Dual Airmar Custom Helm Chairs w/ Folding Lean Bolsters & Armrests • Lenco Trim Tabs

Helm Station

• Fusion Stereo System w/ iPod Plug or USB Flash Drive • (4) Fusion 7" Speakers • Powder Coated Patented T-Top Hardtop w/ Glass Enclosure • Compass • Courtesy & Navigation Lights • Under Gunnel LED Rope Lighting • Molded-In Fwd & Aft Spreader Lights • C-Zone Digital Switching

Inner Console Berth

• SS Sink w/ Corian Vanity & Mirror • Electric Marine Head w/ 10 Gallon Holding Tank w/ Overboard Discharge & Dockside Pump Out • Overhead Lights

Hull, Deck and Cockpit

• Stbd Console Storage Closet for Brush, Gaff, Lines, etc. • 360 Degree Bolster Cushions • Recessed Powder Coated Coaming Rail • Forward Cooler Seat • Fwd Bow Seating w/ Underside Storage • Lewmar Windlass, Anchor, Chain & Rode w/ Bow Foot Controls & Helm Controls • Hide Away Transom Seat • Cabin / Console Rod Rack System (6) • Teak Swim Platforms

Optional Features

• Full Hull Color Aqua Mist • Imron Accent Stripe – One Color (silver or white) • Bow Table Fiberglass • Swim Platform Teak Upgrade • Edson Steering Wheel • Rocket Launchers • Fusion Deluxe Stereo Upgrade: (6) 7" Fusion Speakers, (1) 10" Fusion Sub, Fusion 1600W Amplifier, (1) Additional Remote for Front, Wireless Router • LED Underwater Lights • Outriggers • Deluxe

Fwd Entertainment Station • 12V Refrigerator • Windshield Wiper

Optional Equipment

• 2 Raymarine E165 • Navionics MSD632 Platinum Plus Central and South Florida • Raymarine CP300 Sounder Module • Airmar B164 1KW Bronze • Seaview PMA-57-MI 5" Mount • Seaview ADA-R1 Plate • PYI PM-W47 4DEG 7" Wedge • Icom M506-21 Black VHF Radio • 529-VW 8' White VHF • Shakespeare 5187 Stainless Steel Nutless 4Way Ratchet MNT • Raymarine EV-200 Hydraulic Type-1 Autopilot • Raymarine Raystar 130 GPS • Marinco SPL-12W Spotlight • Raymarine ECI100 Engine and Control Interface • Raymarine HS5 Network Switch

Exclusions

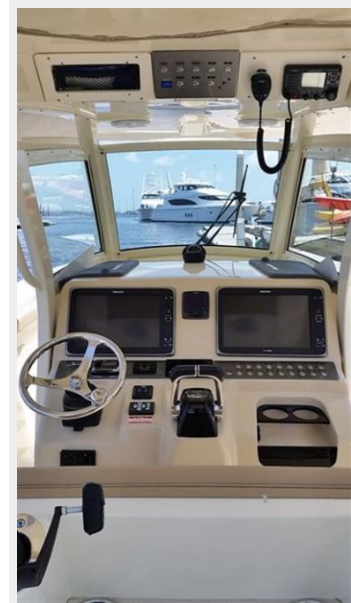
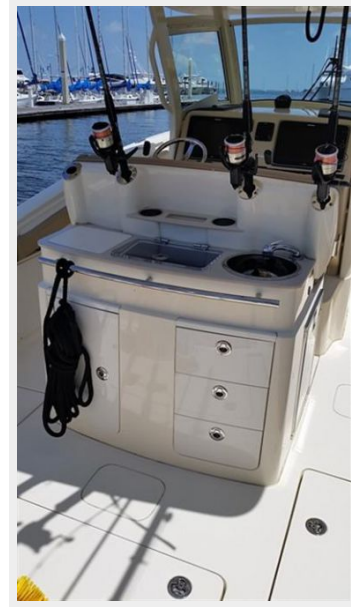
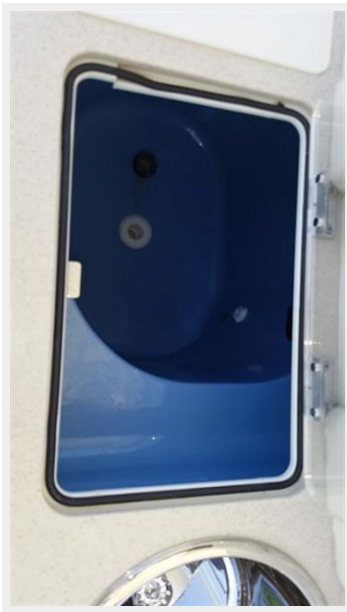
Owner's personal belongings.

Disclaimer

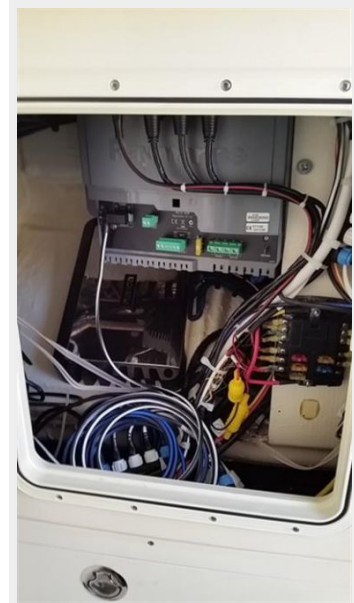
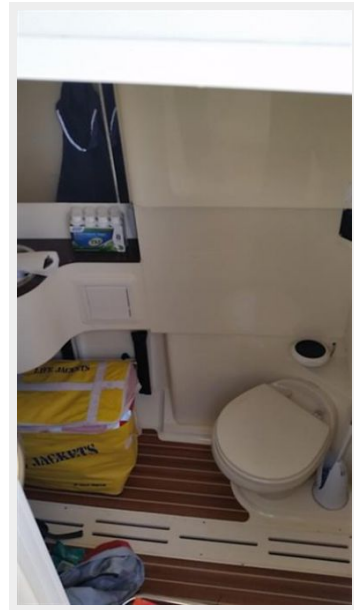
The Company offers the details of this vessel or yacht in good faith but cannot guarantee or warrant the accuracy of this information nor warrant the condition of the vessel. A buyer should instruct his representatives, agents, or his surveyors, to investigate such details as the buyer desires validated. This vessel or yacht is offered subject to prior sale, price change, or withdrawal without notice.

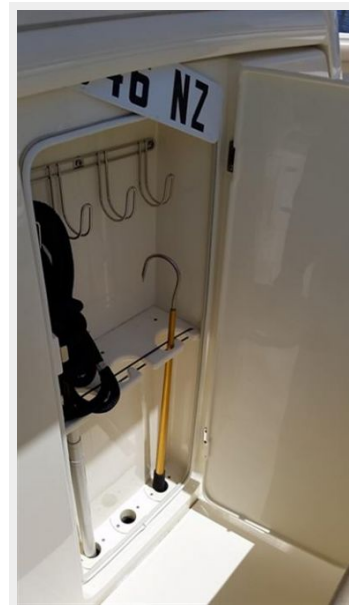
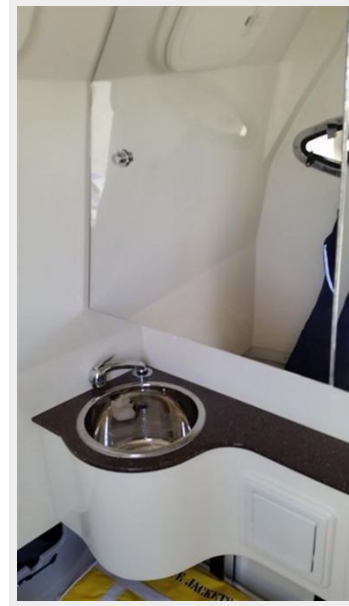
PHOTOS





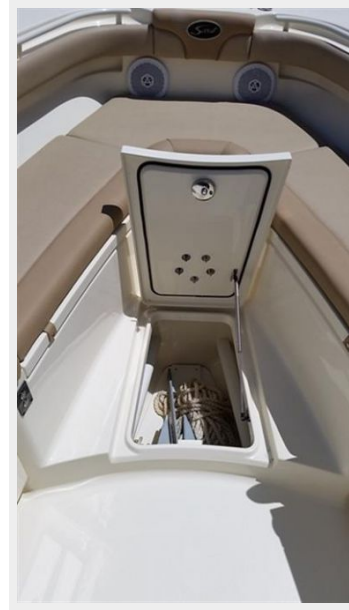




















CONTACTS

Andrey Shestakov, leading yacht broker of the sales department of Shestakov Yacht Sales Inc. Shestakov Yacht Sales Inc., the official representative of the Miami/Fort Lauderdale FL headquarters.

Contact details

Email: andrey@shestakovyachtsales.com

Web: shestakovyachtsales.com/en/

Telephones

USA: +1(954)274-4435

Office hours

Monday – Saturday: **9:00 - 21:00** EDT

Sunday: **closed**

Address



Harbour Towne Marina, 850 NE 3rd St,
STE 213, Dania, FL 33004