

MILLER TIME — KADEY KROGEN



Судостроитель: KADEY KROGEN

Год постройки: 1999

Модель: Траулер

Цена: ЦЕНА ЯХТЫ ПО ЗАПРОСУ

Местонахождение: United States

Длина общая: 48' 0" (14.63m)

Ширина: 17' 4" (5.28m)

Макс. осадка: 5' 0" (1.52m)

Крейс. скорость: 8 Kts. (9 MPH)

Купить Miller Time — KADEY KROGEN а также выбрать подходящую вам яхту из нашего каталога яхт вам поможет опытный яхтенный брокер Андрей Шестаков. На сегодняшний день компания Shestakov Yacht Sales Inc. имеет большое количество яхт в собственном списке продаж, а также тесно сотрудничает со всеми крупными яхтенными производителями по всему миру.

Для того чтобы купить яхту Miller Time — KADEY KROGEN а также проконсультироваться по любому вопросу связанному с покупкой, продажей, чартером яхт позвоните по телефону **+7(918)465-66-44**.

ОГЛАВЛЕНИЕ

ОГЛАВЛЕНИЕ	2
ХАРАКТЕРИСТИКИ	5
Основная информация	5
Размеры	5
Скорость, вместимость и масса	5
Размещение	5
Корпус и палуба	5
Информация о двигателе	6
ПОДРОБНОЕ ОПИСАНИЕ	7
Miller Time Cruising	7
Construction	7
Salon	7
Galley	7
Master Stateroom	7
Ensuite Head	8
Guest Stateroom	8
Guest Head	8
Starboard Compartment	8
Pilothouse	8
Electronics	9
Electrical & Entertainment	9
Engine Room & Machinery	9
Additional Components	9
Deck & Hull	10
Exclusions	10
Исключения	10
Отказ от ответственности	10
ФОТОГРАФИИ	11

Profile	11
Profile	11
Profile	11
Profile	11
Aft Deck	12
Aft Deck	12
Aft Deck	12
Aft Deck	12
Upper Deck	13
Upper Deck	13
Side Deck Walkaround	13
Upper Aft Deck	13
Fore Deck	14
Upper Aft Deck	14
Fore Deck	14
Pilothouse	14
Pilothouse	15
Pilothouse	15
Salon	15
Salon	15
Salon	15
Salon	15
Galley	16
Galley	16
Washer/Dryer	16
Master Stateroom	16
Master Stateroom	17
Master Stateroom	17
Master Stateroom	17

Master Stateroom	17
Office	18
Guest Stateroom	18
Guest Stateroom	18
Guest Stateroom	18
Guest Head	19
Engine Room	19
Engine Room	19
Engine Room	19
Engine Room	20
Engine Room	20
Engine Room	20
Engine Room	20
Engine Room	20
КОНТАКТЫ	21
Контактная информация	21
Телефоны	21
Время работы	21
Адрес	21

ХАРАКТЕРИСТИКИ

Основная информация

Тип судна: Траулер	Подкатегория: Whaleback
Модельный год: 1999	Год постройки: 1999
Страна: United States	Верх: Enclosed
Открытая палуба мостика: Да	Кубрик: Да

Размеры

Длина общая: 48' 0" (14.63m)	Длина палубы: 53' 0" (16.15m)
Ширина: 17' 4" (5.28m)	Макс. осадка: 5' 0" (1.52m)

Скорость, вместимость и масса

Крейс. скорость: 8 Kts. (9 MPH)	Крейсерская скорость поворота: 1800 Kts.
Водоизмещение: 56450 Pounds	Вместимость воды: 500 Gallons
Вместимость сточного бака: 100 Gallons	Объем топливного бака: 1000 Gallons

Размещение

Всего кают: 2	Всего ком. состава: 2
---------------	-----------------------

Корпус и палуба

Материал корпуса: Fiberglass

Информация о двигателе

Двигатели: 1

Производитель: Caterpillar

Модель: 3208NA

Тип двигателя: Inboard

Тип топлива: Diesel

ПОДРОБНОЕ ОПИСАНИЕ

Miller Time Cruising

Miller Time is set-up perfectly for long range cruising and spending extended periods away from the dock. With her additional refrigeration and freezer capacity, water maker and solar panels she is as self-sufficient as possible. If you are considering cruising to distant ports and / or living aboard Miller Time should definitely be on your short list - you will not be disappointed.

Construction

Solid hand laid PPG combo mat fiberglass below the waterline with closed cell P.V.C. sandwich core used in the topsides. End grained balsa-cored superstructure, pilothouse and boat deck. Core mat is also used to reduce print-through. Vinylester resin used in first two laminates below the waterline. Marine plywood bulkheads. Mahogany stringers and frames

Salon

The main salon is open and airy. Port, starboard and aft bulkhead windows have teak valances, blinds and curtains. The rear teak doors have screens and wood mini blinds. To starboard, there is an L-shaped settee with a hi-lo dining table that has storage beneath and behind the settee. The table also converts to a very comfortable double berth. To port there is an L-shaped settee with two built-in side tables and storage along with an entertainment center with HD flatscreen TV. All soft goods are in Ultra Leather and all the carpeting is new.

Galley

Located forward of the salon on the starboard side, includes:

12 cu ft Frigoboat custom stainless steel keel cooled refrigerator with teak door 7 cu ft Frigoboat custom keel cooled top loading freezer Force 10 three burner propane stove and oven, rebuilt 2014 Overhead 12V LED lighting GE Microwave / convection oven Large stainless steel sink Corian countertops Kangen fresh potable water system (\$ 5,000 new in 2014) Matte black adjustable light

Master Stateroom

The master stateroom is forward and features an island queen berth. There are large drawers at the foot of the berth and full storage beneath. Storage is completed with two large hanging lockers and two dressers with drawers, and a large lighted vanity. There are new curtains for the

portholes and screens and new accordion covers for the overhead hatches. The curtains and bed spreads are new in a pleasing nautical motif.

Ensuite Head

The ensuite head features a large stall shower with a teak grate and opening port, NEW full size Dometic Vacuflush fresh water toilet, a linen closet and medicine cabinet along with tile floors and Corian counter. New neutral tan colored small tile flooring.

Guest Stateroom

The portside stateroom has a queen berth that can be converted to an L-shaped settee that pulls out with a Pullman berth above. There is a hanging locker, bookshelves and desk with file drawer storage as well. There is also a very large opening window with new curtains and an opening port for lots of natural light and ventilation. A new SMART TV is linked to the ship's SAT TV system and could serve as ac computer monitor as well.

Guest Head

The guest head is to starboard and has a NEW full size Vacuflush head, tiled floor, separate stall shower with teak grate and opening port, and Corian counter with a medicine cabinet above the sink as well as a separate large locker and LED lighting. Just outside the guest head is the stack washer and dryer

Starboard Compartment

To starboard, forward of the guest head, is the compartment that contains the top loading freezer, custom cabinetry, desk, bookshelves and drawer and locker storage. The conversion was exceptionally well done by American Custom Yachts and leaves room for a single bunk atop the freezer and storage space. Also featured is 12V LED lighting.

Pilothouse

The large ship sized pilothouse is surrounded by windows that provide a 360 degree view for captain, crew and guests. There is a large L-shaped settee with high/low table and generous storage beneath, abundant cabinet storage and a wet bar. A Stidd leather and chrome helm chair provides comfort for the captain. Dutch doors to port and starboard provide easy access to the outside decks. The pilothouse is the perfect place to gather while underway or at anchor. The L-shaped settee was recovered in blue ultra leather matching the Stidd helm seat in 2014.

Electronics

Furuno 1832 radar with ARP10 auto plotter Garmin GPS/plotter 741 Furuno GP-35 GPS Furuno NX-300 Navtex receiver Simrad AP 22 autopilot with AP 21 remote Raytheon ST60 wind speed and direction Raytheon ST60 Tridata depth / speed / log SEA 156 VHF with DSC capability with new antenna in 2014 Uniden MC 535 VHF SEA Loudhailer ICOM MC 710 SSB ACR 406 EPIRB Shakespeare 5410-XT cell phone antenna New Radio Nobletech Software and ship's computer with Windows 8 software, integrated with GPS and autopilot New Garmin touch screen (2) Standard VHF with new antenna in 2014 Wi-Fi Booster ONKYO TXNR515 Stereo with surround sound and subwoofer Logitech smart controller KVH Trackvision HD7, new in 2014 OR 1500 Cyber battery backup

Electrical & Entertainment

Northern Lights 12 kw generator in sound shield 2 Victron 3000 watt MultiPlus inverter/chargers in parallel Victron battery monitor Isolation transformer 4 - 210 Watt Kyocera solar panels with Morningstar controller 8 Trojan L16H-AC 6 volt house batteries = 1740 amp hours (new 2014) Group 27 generator start battery (new 2014) Deka 8D engine start battery (new 2014) JVC tuner / CD player with 12 disc changer Sylvania 20" LCD TV Samsung 17" LCD TV TracStar SV260 satellite TV antenna HD Flatscreen TV linked to stateroom computer Battery chargers added for engine and generator

Engine Room & Machinery

The main engine and generator are in the aft main engine room with the fuel tanks and water heater while there is a forward machinery room that is separate from the heat and noise of the engine and generator. This forward machinery room includes the water tanks, house batteries and dual Racor fuel filters as well as the stabilizers, watermaker and work bench.

Caterpillar 3208NA 210HP diesel - 7,106 hours Twin Disc MG506 marine gear Dual Racor fuel filters with vacuum gauge Wesmar hydraulic stabilizers Wesmar hydraulic bow thruster, 25hp Vickers hydraulic pump with Wilkes & McLean noise suppressor Spectra Catalina 300 gpd water maker with auto flush 4 Zone Ocean Marine reverse cycle air conditioning Reverso oil change system Spur line cutter Fuel transfer pump Fireboy automatic fire suppression system Galley Maid anchor and deck washdown Air compressor Bonding system 20 gal water heater New H2O pump New painted engine room Fuel polisher

Additional Components

100# Bruce Fast-Set anchor with 300' 5/8" chain 66# Plow anchor Maxwell 2200 anchor windlass AB RIB Electric hoists for dinghy launch and retrieval GE washer and dryer Buell

"Strombos" air horns Jabsco searchlight Textiline sunshades for all windows

Deck & Hull

All new antennas Fully painted and sanded teak Tender, 15' AP with 70hp Yamaha with Fusion stereo Winches with wireless remote with special line New (2) stainless steel anchors: 100lb Bruce, 66lb Plow

Exclusions

Tools Personal items Artwork

Исключения

При продаже яхты исключаются личные вещи владельца.

Отказ от ответственности

Компания предоставляет описание судна или яхты добросовестно, но не может гарантировать точность этой информации, а также не ручается за техническое состояние. Покупатель должен проинструктировать своих агентов или оценщиков исследовать представленную информацию более подробно, по собственному желанию. Продажа судна или яхты, изменение цены или снятие с продажи будет происходить без предварительного уведомления.

ФОТОГРАФИИ

Profile



Profile



Profile



Profile



Aft Deck



Aft Deck



Aft Deck



Aft Deck



Upper Deck



Upper Deck



Side Deck Walkaround



Upper Aft Deck



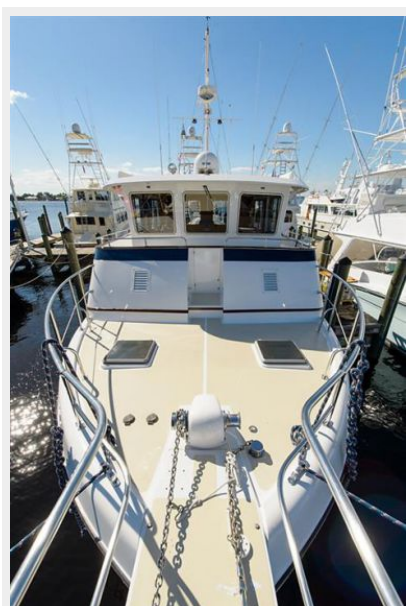
Fore Deck



Upper Aft Deck



Fore Deck



Pilothouse



Pilothouse



Pilothouse



Salon



Salon



Salon



Salon



Galley



Galley



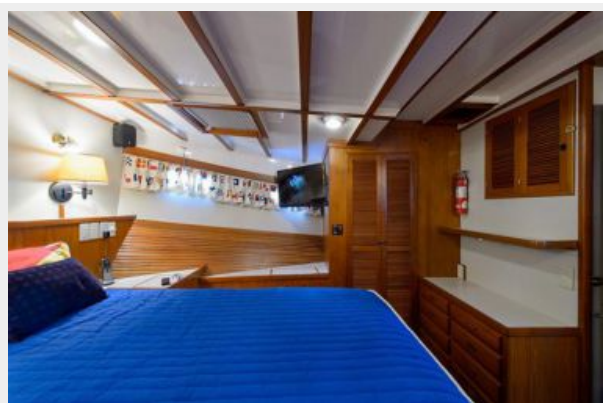
Washer/Dryer



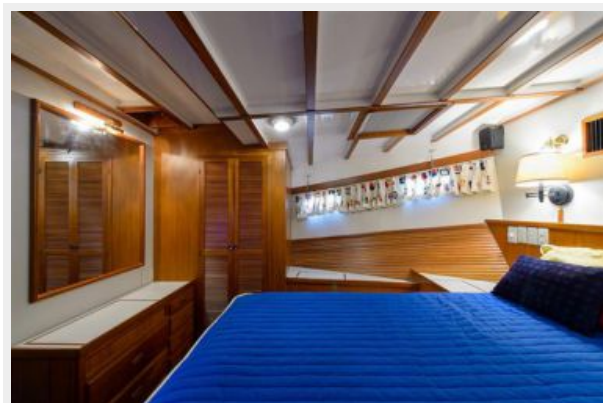
Master Stateroom



Master Stateroom



Master Stateroom



Master Stateroom



Master Stateroom



Office



Guest Stateroom



Guest Stateroom



Guest Stateroom



Guest Head



Engine Room



Engine Room



Engine Room



Engine Room



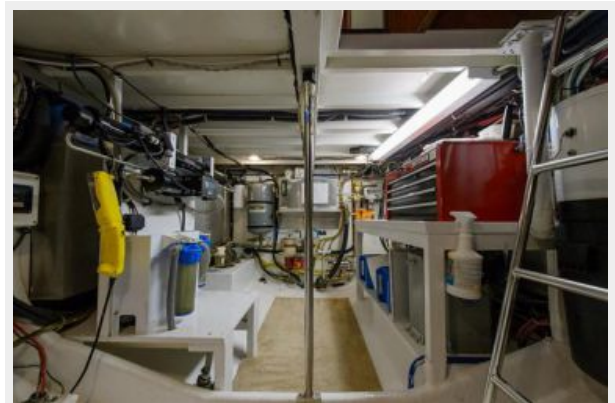
Engine Room



Engine Room



Engine Room



Engine Room



КОНТАКТЫ

Андрей Шестаков (Andrey Shestakov) – ведущий яхтенный брокер отдела продаж яхт и судов компании Shestakov Yacht Sales Inc. Официальный представитель Shestakov Yacht Sales Inc. для русскоговорящих клиентов в центральном офисе компании в Майами/Форт Лодердейл/Флорида/США.

Контактная информация

Email: andrey@shestakovyachtsales.com

Web: shestakovyachtsales.com

Телефоны

Краснодарский край: **+7(918)465-66-44**

США, Майами, Флорида: **+1(954)274-4435**

Время работы

Понедельник – Суббота: **9:00 - 21:00**
EDT

Воскресенье: **Закрето**

Адрес



Harbour Towne Marina, 850 NE 3rd St,
STE 213, Dania, FL 33004