

CROWN ROYAL — MERIDIAN



Builder: MERIDIAN

Year Built: 2006

Model: Motor Yacht

Price: PRICE ON APPLICATION

Location: United States

LOA: 58' 0" (17.68m)

Beam: 17' 4" (5.28m)

Max Draft: 4' 11" (1.50m)

Our experienced yacht broker, Andrey Shestakov, will help you choose and buy a yacht that best suits your needs Crown Royal — MERIDIAN from our catalogue. Presently, at Shestakov Yacht Sales Inc., we have a wide variety of yachts available on our sale's list. We also work in close contact with all the big yacht manufacturers from all over the world.

If you would like to buy a yacht Crown Royal — MERIDIAN or would like help answering any questions concerning purchasing, selling or chartering a yacht, please call +1(954)274-4435

TABLE OF CONTENTS

TABLE OF CONTENTS	2
SPECIFICATIONS	3
Overview	3
Basic Information	3
Dimensions	3
Speed, Capacities and Weight	3
Accommodations	3
Hull and Deck Information	4
Engine Information	4
DETAILED INFORMATION	5
Specifications	5
Exclusions	8
Disclaimer	8
PHOTOS	9
CONTACTS	18
Contact details	18
Telephones	18
Office hours	18
Address	18

SPECIFICATIONS

Overview

The flagship of the Meridian Fleet, the 580 Pilothouse Motor Yacht is a Northwest legend. With her common rail Cummins QSM 11 635 h/p engines, underwater exhaust, full beam master stateroom and pilothouse with fabulous visibility, this vessel is a perfect fit for extended cruising.

CROWN ROYAL features a three stateroom two head layout with plenty of storage along with a standup engine room. CROWN ROYAL is a fine example of a well equipped and maintained 580 Meridian

Basic Information

Category: Motor Yacht

Model Year: 2006

Year Built: 2006

Country: United States

Dimensions

LOA: 58' 0" (17.68m)

Beam: 17' 4" (5.28m)

Max Draft: 4' 11" (1.50m)

Clearance: 19' 7" (5.97m)

Speed, Capacities and Weight

Displacement: 59900 Pounds

Water Capacity: 218 Gallons

Holding Tank: 74 Gallons

Fuel Capacity: 800 Gallons

Accommodations

Total Cabins: 3

Total Heads: 2

Hull and Deck Information

Hull Material: Fiberglass

Engine Information

Engines: 2

Manufacturer: Cummins

Fuel Type: Diesel

DETAILED INFORMATION

Specifications

Electronics:

Comprehensive Dual Stage Package

Pilothouse:

Northstar 4kw Radar

Northstar 6000 GPS Plotter

Northstar Depth Sounder

Northstar Autopilot

VHF Radio

Four Station Color TV Monitor

Smart Craft Engine Display

Ritchie 6" Flush Mounted Compass

Flybridge:

Northstar 4kw Radar

Northstar 6000 GPS Plotter

Northstar Depth Sounder

Northstar Autopilot

VHF Radio

Smart Craft Engine Display

Ritchie 6" Compass

Engine & Mechanical:

Twin 635 H/P Cummins QSM 11's

Docking On Command Bow & Stern Thrusters

5 Zone Reverse Cycle Heating & Air

Hynautic Steering

Engine Synchronizer

Bennett Hyraulic Trim Tabs

Dual Racor Fuel Filters (Both Engines)

Sea Fire Fire Supression

3" S/S Shafts

PYI PSS Dripless Shaft Seals

Bronze Rudders & Struts

Fresh Water Accumulator Tank

Lewmar Electric Windlass

VDO Gauges

Oil Change System

Fuel Transfer System

Glendinning Cable Master

Electrical:

Onan 17.5kw Generator

Xantrex Inverter/Charger

50AMP 240Volt Shore Power System

Battery Isolator

Battery Switches

Battery Paralleling Switches

Electrical Bonding System

Hull & Deck:

Bimini Top

Full Enclosure

Nautical Structures 1600 lb Davit

Walker Bay Tender & Honda Outboard Motor

Lewmar Anchor Windlass 60lb

S/S Anchor

S/S Bow Anchor C

hafe Plate

Bonded Tinted Windows

Fresh & Raw Water Washdowns (Fore & Aft)

Hot & Cold Water Shower Aft

ITT Spotlight

Underwater Exhaust

Dockside Water Connection

Flex Teak Decking

Dinette & Galley:

Double S/S Sink

4 Burner Electric Cooktop

Electric Oven

Microwave

Trash Compactor

Coffee Maker

Spice Rack

Ample Storage

Teak & Holy Flooring

Karadon Counters & Table Top

Overhead Direct & Indirect Lighting

Exclusions

Owner's personal belongings.

Disclaimer

The Company offers the details of this vessel or yacht in good faith but cannot guarantee or warrant the accuracy of this information nor warrant the condition of the vessel. A buyer should instruct his representatives, agents, or his surveyors, to investigate such details as the buyer desires validated. This vessel or yacht is offered subject to prior sale, price change, or withdrawal without notice.

PHOTOS

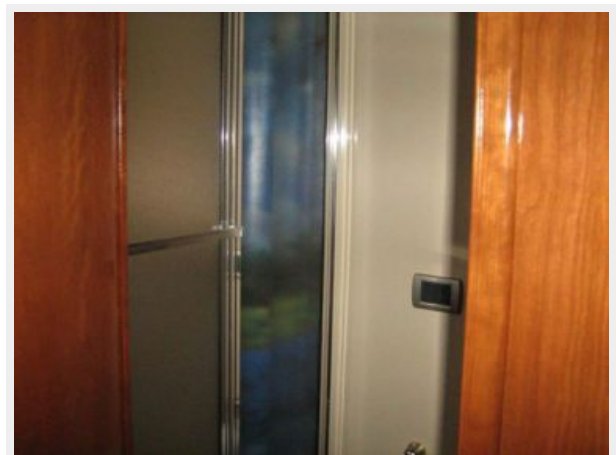


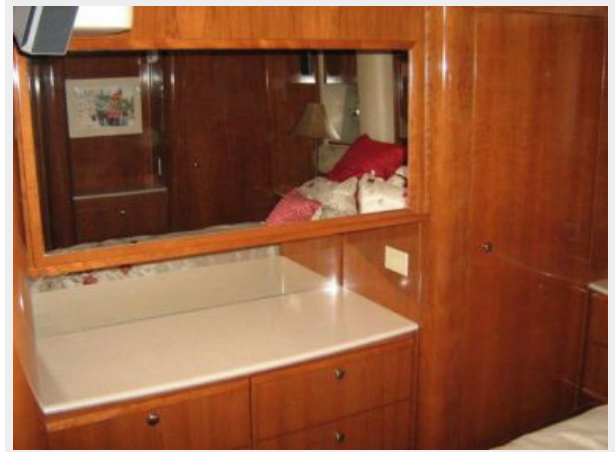
















CONTACTS

Andrey Shestakov, leading yacht broker of the sales department of Shestakov Yacht Sales Inc. Shestakov Yacht Sales Inc., the official representative of the Miami/Fort Lauderdale FL headquarters.

Contact details

Email: andrey@shestakovyachtsales.com

Web: shestakovyachtsales.com/en/

Telephones

USA: +1(954)274-4435

Office hours

Monday – Saturday: **9:00 - 21:00** EDT

Sunday: **closed**

Address



Harbour Towne Marina, 850 NE 3rd St,
STE 213, Dania, FL 33004