

2 INTENSE — BERTRAM



Судостроитель: BERTRAM

Год постройки: 2007

Модель: Катер для спортивной рыбалки

Цена: **ЦЕНА ЯХТЫ ПО ЗАПРОСУ**

Местонахождение: United States

Длина общая: 67' 0" (20.42m)

Ширина: 18' 8" (5.69m)

Макс. осадка: 5' 7" (1.70m)

Крейс. скорость: 31.283144712 Kts. (36 MPH)

Макс. скорость: 35.628025922 Kts. (41 MPH)

Купить 2 Intense — BERTRAM а также выбрать подходящую вам яхту из нашего каталога яхт вам поможет опытный яхтенный брокер Андрей Шестаков. На сегодняшний день компания Shestakov Yacht Sales Inc. имеет большое количество яхт в собственном списке продаж, а также тесно сотрудничает со всеми крупными яхтенными производителями по всему миру.

Для того чтобы купить яхту 2 Intense — BERTRAM а также проконсультироваться по любому вопросу связанному с покупкой, продажей, чартером яхт позвоните по телефону **+7(918)465-66-44**.

ОГЛАВЛЕНИЕ

ОГЛАВЛЕНИЕ	2
ХАРАКТЕРИСТИКИ	3
Обзор	3
Основная информация	3
Размеры	3
Скорость, вместимость и масса	3
Размещение	4
Корпус и палуба	4
Информация о двигателе	4
ПОДРОБНОЕ ОПИСАНИЕ	5
"2 Intense"	5
Исключения	15
Отказ от ответственности	15
ФОТОГРАФИИ	16
КОНТАКТЫ	29
Контактная информация	29
Телефоны	29
Время работы	29
Адрес	29

ХАРАКТЕРИСТИКИ

Обзор

If you're looking for the ultimate deep sea fishing machine, don't look anywhere else! This Bertram 670 was lightly used by its one and only owner for the past six years. This was a demo boat for Bertram Yachts and owner took delivery in late 2008. This boat is full of options including: upgraded MTU engine package, anti-rolling gyro system, FLIR night vision, Boston Whaler tender, mezzanine deck, eskimo ice maker for transom, water-maker, upgraded leather interior, and much more!

This Bertram 670 was lightly fished, and that's the reason behind the low hours. If you would like a complimentary tour, please don't hesitate to contact the listing agent for a private showing.

Основная информация

Тип судна: Катер для спортивной рыбалки

Модельный год: 2007

Год постройки: 2007

Страна: United States

Открытая палуба мостика: Да

Размеры

Длина общая: 67' 0" (20.42m)

Длина палубы: 67' 4" (20.52m)

Ширина: 18' 8" (5.69m)

Макс. осадка: 5' 7" (1.70m)

Трапы: 19' 6" (5.94m)

Длина привального бруса: 71' 6" (21.79m)

Скорость, вместимость и масса

Крейс. скорость: 31.283144712 Kts. (36 MPH)

Макс. скорость: 35.628025922 Kts. (41 MPH)

Водоизмещение: 109148 Pounds

Вместимость воды: 350 Gallons

Вместимость сточного бака: 82 Gallons

Объем топливного бака: 2008 Gallons

Размещение

Всего кают: 4

Всего ком. состава: 4

Корпус и палуба

Материал корпуса: Fiberglass

Информация о двигателе

Двигатели: 2

Производитель: MTU

Модель: 16V2000

Тип двигателя: Inboard

Тип топлива: Diesel

ПОДРОБНОЕ ОПИСАНИЕ

"2 Intense"

Enclosed Flybridge

- AC Outlets
- AFT helm station w/ steering, clutches, throttles, stop/start switches, horn switch and trim tab controls
- Air conditioning, reverse cycle
- Aluminum rails and stanchions, AFT deck
- Carpeting
- Compass
- Engine synchronizer
- Electric clutch and throttle controls
- Electronics installation console, full width, forward helm
- Fuel level gauge
- Helm station with all standard gauges, switches, engine controls, helm seat and companion seat
- Hydraulic steering, power assisted
- Lighting, AC and DC
- Monitoring and alarm systems; bilge, fire, engine temperature, oil pressure, etc.
- Sette lounge, L-shaped, portside w/ storage
- Kahlenberg air horns
- Basic electronics
- Stereo, AM/FM/CD/DVD player
- Telephone outlet
- Tinted safety glass
- Two ventilation hatches on flybridge hardtop
- Varnished wood paneling
- Wet bar w/ sink, refrigerator, ice maker, and bottle storage
- Windshield defrosting system

Exterior Finish

- Maxguard (Premium ISO-NPG gelcoat)
- Feature stripes painted with Dupont IMRON paint
- BOMAR hatches powder coated to match gelcoat
- Awlgrip applied to non skid deck surfaces
- Blister resistant vinyl ester resin in hull bottom skin coat

Hull, Deck and Flybridge Construction

- Vacuum bagged composite structural bulkheads & hand laid web members
- Deck: hand laid-up molded fiberglass hull with vacuum bagged core and sandwich construction
- Flybridge; hand laid-up molded fiberglass and sandwich construction
- Hull; hand laid-up molded fiberglass, solid bottom with vacuum bagged cored hullsides, solid keel and chines
- Solid fiberglass hull bottom. Hull sides & superstructure laminated with high density foam
- Hull sides above waterline - vacuum bagged with divynycell core

Hull

- Ball seacocks on all underwater thruhull fittings, all w/ electrical bonding
- Bertram dark blue waterline stripe
- Bilge pumps (5); (4) auto/manual, (1) auto only
- Bottom paint with primer coat and 1 coat dark blue anti-fouling paint
- Bow thruster; 10HP double propellers 10" diameter
- Common drain system
- Fuel tank: FRP, zero trim effect (midship mounted) with fuel level sightglass
- Holding tank: w/ liquid level monitors and plumbed for dockside pump out
- Linear exhaust muffler syste
- Molded transom steps
- Recessed trim tabs, electro-hydraulic
- Sump tank w/ automatic pump-out for shower and sink water
- Zincs, transom mounted

Deck

- Anchor locker with hatch and drop in box for line storage
- Anchor windlass: electric 24 V2000 W with deck mounted foot controls
- Anchor: Delta 65 lbs. with chain and line
- Anodized aluminum bow rail with burgee staff
- Cleats: 2 FWD, 2 AFT w/ transom hawse pipes, 4 springline
- Compressed heavy-duty white vinyl rubrail with solid stainless steel insert
- Frameless side windows
- Fuel fills, port & starboard
- Hatches over engines for ease of engine access
- Powder coated aluminum handrails on pilaster
- Powder coated aluminum handrails over side windows
- Washdown faucet (foredeck)

Cockpit

- Access hatches to lazarete, gasketed, scuppered, and dogged
- Aluminum salon door with frameless glass
- Cable TV and telephone connections
- Cockpit coaming and padding
- Cutting board
- Dockside electrical connection, (2) 50 AMP/220V (Two Glenndinning Cable Master, standard)
- Dockside water connection with pressure reducing valve
- Doors, port & starboard, to conceal shore power inlets, dockside water inlet, faucets and switches
- Engine room access door, with ladder to engine room, lockable
- Fire extinguisher manual controls
- Washdown, freshwater
- Freshwater tank fill
- Washdown, saltwater
- Fuel fill alarm
- Lighting: cockpit
- Molded boarding steps, port & starboard, teak covered
- Molded fiberglass spiral stairway with teak covered steps to flybridge
- Molded rod compartment, with wash down (lighted)
- Cockpit freezer
- Cockpit storage locker
- Recessed transom swim/emergency steps
- Reinforcement for fighting chair
- Removable fish box with macerator pump
- Removable hatch to machinery room
- Rod holders (4)
- Salon steps, teak covered
- Self-bailing cockpit with large scuppers
- Sink with salt and fresh water faucets
- Stereo speakers, watertight
- Transom door and gate
- Transom fish box insulated, with overboard drain
- Under gunwale storage for boat hook and gaff

Engine Compartment and Fuel Systems

- Acoustical and thermal insulation in the engine room
- Vibration dampening isolators for engines

- Aquamet shafts
- Automatic/Manual blower system for engine room
- Bronze rudders and struts
- Air intake, hull sides
- Dripless shaft seal
- Dual fuel-filters - main engines (4 total)
- Electric Hot Water Heater: 30 gal
- Emergency bilge water evacuation system, engine driven
- Emergency engine shut-down system
- Engine and machinery room lighting AC & DC
- Engine room access ladder
- Fixed fire extinguishing system for engine and machinery rooms w/ automatic and remote manual controls plus audible and visual discharge signals
- Fuel filters on generator supply
- Generator: 23 kW (2) freshwater-cooled; remote start diesel generators w/ sound shields. (Generator may not supply power for all standard, optional and owner-added equipment. Power management may be required).
- Hi-gloss polyurethane finish
- Hydraulic steering w/ power assist pump (dual)
- Metered oil change system for engines, gear & generator w/ quick disconnect
- Removable engine room hatches
- Seacocks, heavy duty manganese bronze
- Seawater strainers for generator, air conditioning and saltwater washdown pump
- Trolling valves
- Twin diesel turbo-charged, fresh water cooled main engines with marine gear, engine driven alternators, water separators/ fuel filters, & exhaust mufflers
- Twin MTU's 16V2000 (2000 HP with 750 hours)

Electrical Systems - Deckhouse

- 240V/120V AC input and main distribution main engines distribution panel w/ voltmeter, ammeter, generator controls, magnetic circuit breakers and shore power selector switches
- 24V/12V DC main distribution panel w/ voltmeter, ammeter, magnetic circuit breakers and batteries tester
- Alarm Monitor panel
- Alarm Monitor: bilge flood signal for three compartments
- Alarm Monitor: black water tank indicator light
- Alarm Monitor: high-heat signal in engine and machinery rooms
- Electrical pump-out for toilet holding tank
- Fresh water level gauge
- Light fixtures, 120V AC / 24V DC
- Radio and cable television system w/ antenna and shore connection
- Telephone jacks w/ shore connection

Electrical Systems - Galley

- 240V/120V AC appliances distribution panel with magnetic circuit breakers
- 24V DC galley and cabins distributions panel
- GFI receptacles

Electrical Systems - Bridge

- 24V DC flybridge electronics accessory panel w/ magnetic circuit breakers in console
- 12V DC flybridge electronics accessory panel w/ magnetic circuit breakers in console
- Alarm Monitor panel
- Alarm Monitor: bilge flood signal for three compartments
- Alarm Monitor: black water tank indicator light
- Alarm Monitor: high-heat signal in engine and machinery rooms
- Battery parallel switch, remote
- Ground fault circuit interrupter receptacles in console
- Main engine control panel

Electrical Systems - Engine Room and Systems Room

- 24V DC batteries panel w/ switches for main engines and main battery disconnect switches
- 24V DC fuses for uninterrupted power to bilge pumps, fire and bilge flood monitors
- Air conditioning zoned chill water system total 84,000 BTU w/ bridge windshield demister on Enclosed Bridge model
- Batteries (8D), heavy duty, 2 banks 4 batteries each. House & engines; 1 bank 12V generators
- Battery chargers with thermal cutoff and switching system for complete integration and battery parallel system for main engines and generator
- Bonding system, galvanic and electrical
- Converters (2) 50 AMP 24V; (1) 20AMP 12V
- GFI receptacles
- Isoboost transformers (2)
- Lights fixtures, 120V AC/ 24V DC

Coast Guard Mooring and Docking Equipment

- American flag
- Bertram burgee
- Docking lines braided nylon

- Fire extinguishers, portable
- Fog bell, 8"
- Life jackets (8)
- Life ring
- Owner's manual

Deckhouse - Salon

- 120V AC receptacles
- Storage compartment behind sofa
- Air conditioning electronic control
- Carpeting with acoustic padding
- Central vacuum system
- Cocktail table
- Wet bar w/ Scotsman icemaker and bottle storage
- Electrical distribution panels
- Entertainment center w/ 37" LCD TV, AM/FM stereo receiver, CD/DVD player, CD changer
- Lighting, 120V AC and 24V DC
- Sofa w/ 2 armchairs (Salon layout A)
- Fixed frameless windows with tinted safety glass, port & starboard
- Cherry wood paneling w/ padded vinyl accents
- Vinyl headliner (Whisper Wall System)
- Wood Blinds (electric)
- Starboard hullside cabinet storage
- AFT salon window, frameless, removable

Deckhouse - Galley/Dinette

- Flooring, Cherry wood
- Cooktop, four burners w/ oven below
- Designated storage for dishes and glasses
- Dinette, U-shaped w/ storage and Cherry table w/ burl wood insert
- Dishwasher (Fisher & Paykel)
- Garbage disposal
- GE Profile Series side by side refrigerator/freezer w/ icemaker (Salon A layout)
- Granite countertops
- Lighting, 120V AC
- Microwave/Convection oven
- Single lever hot and cold faucet
- Storage cabinets & drawers
- Storage over dinette, forward

- Sub-zero under the counter drawer type refrigerator (Salon B Layout)
- Trash compactor
- Vinyl headliner

Companionway

- Carpeting
- Central vacuum system
- Flush panel doors to staterooms, starboard head and laundry locker
- Lighting 24V DC
- Awlgrip finished bilge storage compartment
- Vinyl wall covering
- Vinyl headliner
- Washer and dryer in locker w/ shelf

Master Stateroom

- 120V AC receptacles
- Air conditioning electronic control
- Built in digital alarm clock
- Built-in dressers w/ drawers and shelves
- Carpeting
- Combination wood paneling/ padded vinyl wall covering
- Dressing table w/ large mirrored cabinet and stool
- Entertainment center w/ 26" LCD TV, AM/FM/CD/DVD player
- Hanging locker, Oversized, lighted cedar lined hanging locker (full length)
- Headboard, upholstered w/ padded suede and side mirrors
- Lighting, 120V AC and 24V DC
- Mattress, innerspring w/ spread, pillows, and shams
- Port and starboard nightstands w/ drawer
- Queen-sized berth w/ drawer storage beneath
- Reading lights
- Sheets/ pillowcases, one set
- Vinyl headliner

Starboard Guest Stateroom

- 120V AC receptacles
- 15" LCD TV, AM/FM/CD/DVD player
- Air conditioning electronic control

- Built in digital alarm clock
- Carpeting
- Four drawer dresser w/ shelf
- Hanging locker, cedar lined w/ automatic light
- Lighting, 120V AC and 24V DC
- Mattress, innerspring w/ spread, pillows, and shams
- Nightstand with drawer
- Opening hatch overhead w/ shade & screen
- Private access to head
- Reading lights
- Sheets/ pillowcases, one set
- Upper hullside cabinet storage
- Vinyl headliner
- Vinyl wall covering, Padded

Crew/Port Stateroom

- 120V AC receptacles
- 15" LCD TV w/ AM/FM/CD/DVD player
- Air conditioning electronic control
- Berths, upper & lower, w/ storage beneath lower berth
- Built-in digital alarm clock
- Carpeting
- Hanging locker, cedar lined w/ automatic light
- Lighting, 120V AC and 24V DC
- Mattress, innerspring w/ spread, pillows, and shams
- Private access to head
- Sheets/pillowcases, one set
- Vinyl wallcovering, Padded

Forward Guest Stateroom (VIP)

- 120V AC GFI receptacles
- Air conditioning electronic control
- Built-in digital alarm clock
- Carpeting
- Drawers under bed (2)
- Entertainment center w/ 15" LCD TV AM/FM stereo receiver w/ CD/DVD/ player
- Hanging locker, cedar lined w/ automatic light (starboard only)
- Hullside storage shelves
- Lighting, 120V AC/ 24V DC

- Mattress, innerspring w/ spread, pillows, and shams
- Opening hatch overhead w/ shade & screen
- Queen-sized berth w/ drawer storage beneath
- Reading lights
- Sheets/pillowcases, one set
- Upper cabinet storage, port & starboard
- Vinyl headliner
- Vinyl wallcovering, Padded

Master Head

- 120V AC GFI receptacles
- Countertop, marble
- Dual sinks
- Exhaust blowers
- Flooring, teak wood
- Lighting, 120V AC and 24V DC
- Mirrored overhead
- Stall shower w/ door and automatic sump pump
- Tecma electric toilet system (freshwater)
- Upper cabinets' w/ mirrored doors

Starboard Guest Head

- 120V AC GFI receptacles
- Countertop, marble
- Exhaust blowers
- Flooring, teak wood
- Lighting, 120V AC and 24V DC
- Mirrored overhead
- Stall shower w/ door and automatic sump pump
- Tecma electric toilet system (freshwater)
- Upper cabinets' w/ mirrored doors

Port Guest Head

- 120V AC GFI receptacles
- Exhaust blowers
- Lighting, 120V AC and 24V DC
- Countertop, marble

- Mirrored overhead
- Opening hatch overhead w/ shade & screen
- Stall shower w/ door and automatic sump pump
- Flooring, teak wood
- Tecma electric toilet system (freshwater)
- Towel bar
- Upper cabinets' w/ mirrored doors

Base Price + Factory Installed Options

- Base Price w/ Twin Diesel Engines - \$3,749,803
- Salon B-Layout w/ undercounter refrigeration - \$10,087
- Pipe Welders polished pipe rail package - \$2,500
- Backing plate on Enclosed Bridge - \$775
- Blue starboard flooring in the E/R - \$2,250
- Table on F/B fastened down and removable - \$675
- Chrome package for MTU engine - \$13,000
- Traps in sink throughout - \$900
- Stainless steel anchor - \$9,225
- Premium audio/ Visual package: salon, master, stbd, & VIP staterooms - \$11,492
- Flybridge 15" fold-down TV - \$4,694
- Remote macerator switch/ overboard - \$1,500
- Mezzanine Deck - \$59,091
- Anti-Roll Gyro System - \$188,968
- Mezzanine deck A/C - \$15,000
- Eskimo Ice maker for Transom Fishbox - \$13,054
- Underwater lights (3) at transom - \$12,901
- Upgrade Sofa: Ultra-leather, carpet, pillow package, sleeper sofa on F/B - \$21,504
- Watermaker 600 GPD - \$15,455
- Teak bench in forward port shower - \$1,500
- Low profile foredeck hatches - \$6,115
- DDEC Controls - \$50,672

Dealer Installed Options

- High Seast Technology Electronics: Furuno radar, 15" Furuno display, Furuno sounder, 15" Furuno display, Northstar 972 GPS Plotter, VHF, SAT TV, Engine room color camera - \$81,687
- Murray Product Fighting chair - \$20,550

Recently Installed Options

- Garmin MFD Color Display
- FLIR Night Vision

Исключения

При продаже яхты исключаются личные вещи владельца.

Отказ от ответственности

Компания предоставляет описание судна или яхты добросовестно, но не может гарантировать точность этой информации, а также не ручается за техническое состояние. Покупатель должен проинструктировать своих агентов или оценщиков исследовать представленную информацию более подробно, по собственному желанию. Продажа судна или яхты, изменение цены или снятие с продажи будет происходить без предварительного уведомления.

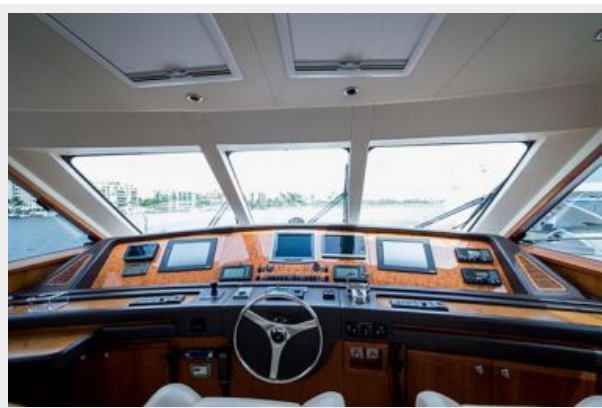
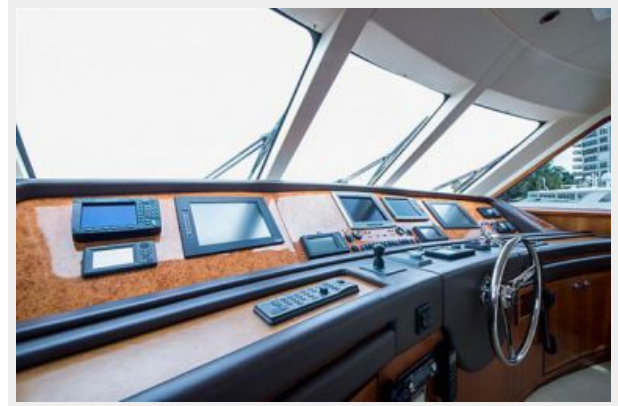
ФОТОГРАФИИ







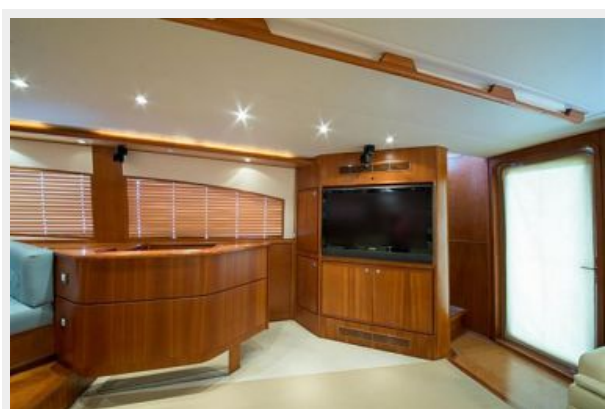




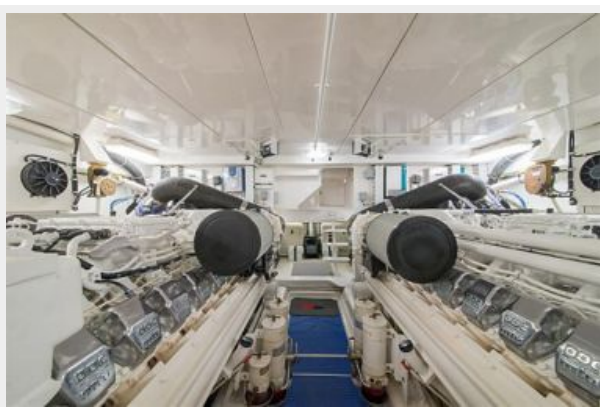
















КОНТАКТЫ

Андрей Шестаков (Andrey Shestakov) – ведущий яхтенный брокер отдела продаж яхт и судов компании Shestakov Yacht Sales Inc. Официальный представитель Shestakov Yacht Sales Inc. для русскоговорящих клиентов в центральном офисе компании в Майами/Форт Лодердейл/Флорида/США.

Контактная информация

Email: andrey@shestakovyachtsales.com

Web: shestakovyachtsales.com

Телефоны

Краснодарский край: **+7(918)465-66-44**

США, Майами, Флорида: **+1(954)274-4435**

Время работы

Понедельник – Суббота: **9:00 - 21:00**
EDT

Воскресенье: **Закрето**

Адрес



Harbour Towne Marina, 850 NE 3rd St,
STE 213, Dania, FL 33004