

# 46FT 1980 MORGAN 46 SLOOP RIG — MORGAN



**Builder:** MORGAN

**Year Built:** 1980

**Model:** Center Cockpit

**Price:** PRICE ON APPLICATION

**Location:** United States

**LOA:** 46' 0" (14.02m)

**Beam:** 13' 5" (4.09m)

**Max Draft:** 6' 0" (1.83m)

Our experienced yacht broker, Andrey Shestakov, will help you choose and buy a yacht that best suits your needs 46ft 1980 Morgan 46 Sloop Rig — MORGAN from our catalogue. Presently, at Shestakov Yacht Sales Inc., we have a wide variety of yachts available on our sale's list. We also work in close contact with all the big yacht manufacturers from all over the world.

If you would like to buy a yacht 46ft 1980 Morgan 46 Sloop Rig — MORGAN or would like help answering any questions concerning purchasing, selling or chartering a yacht, please call +1(954)274-4435

---

# TABLE OF CONTENTS

---

TABLE OF CONTENTS	2
SPECIFICATIONS	3
Basic Information	3
Dimensions	3
Speed, Capacities and Weight	3
Hull and Deck Information	3
Engine Information	3
DETAILED INFORMATION	4
Accommodations	4
Galley	4
Deck and Deck	5
Walk-Through	6
Owner's Stateroom	6
Mechanical	6
Electrical	7
Electronics	7
Sails & Rigging	7
Exclusions	8
Disclaimer	8
PHOTOS	9
CONTACTS	13
Contact details	13
Telephones	13
Office hours	13
Address	13

---

# SPECIFICATIONS

---

## Basic Information

---

**Category:** Center Cockpit

**Model Year:** 1980

**Year Built:** 1980

**Country:** United States

## Dimensions

---

**LOA:** 46' 0" (14.02m)

**LWL:** 29' 0" (8.84m)

**Beam:** 13' 5" (4.09m)

**Max Draft:** 6' 0" (1.83m)

## Speed, Capacities and Weight

---

**Displacement:** 30000 Pounds

## Hull and Deck Information

---

**Hull Material:** Fiberglass

## Engine Information

---

**Engines:** 1

**Manufacturer:** Yanmar

**Fuel Type:** Diesel

---

# DETAILED INFORMATION

---

## Accommodations

---

**Forward Guest Stateroom** features a large V-berth w/filler, shelves to port and starboard." Below the berth you'll find four drawers and loads of dry storage area with a hanging locker to port.

**Forward Guest Head** is located to starboard and can be accessed from a door to the forward cabin and a separate door from the main salon

**Main Salon** features a large U shaped settee to starboard and a large settee to port that can convert to an upper and lower berth.

**The Galley** is to starboard and offers the cook all the amenities of home with exceptional counter space and storage, plus a trash compactor. The refrigerator and freezer is a Crosby Cold Plate system.

**The Navigation Station** is to port with flip top chart table, under counter storage, lots of space for electronics, seat w/storage under with the electrical panel just aft with adjacent bookshelves for manuals and cruising guides.

In the **Walk-Through** to the aft cabin are the built-in Splendide washer/dryer, Raritan ice maker and Kenmore dehumidifier. There is a work bench with storage under. Access to the **engine room** is through double doors,

**The Aft Head** features a tub/shower and has double access either from the walk-through or the owners stateroom.

**Owners Stateroom** is one of the nicest you will find on a Morgan 46. It features a queen size athwart ship berth with storage cabinets to port and starboard where there is a sitting area.

---

## Galley

---

- SS deep double sink
- Princess 3 burner propane stove/oven
- Hot/cold pressure water
- GE trash compactor
- Crosby refrigeration unit w/freezer holding plate 110v
- Teak dish rack

- Teak spice rack
- Carbonated water filter

## Deck and Deck

---

Morgan is famous for their all hand-laid fiberglass hulls and decks. Whereas most builders used a chopper gun to blow in short fiberglass strands, Morgan never used this technique and is one reason their boats are considered among the most robust boats built.

- Keel - Modified cruising fin molded integral with the hull and internally ballasted.
- Rudder - Integrated Skeg hung with lower gudgeon and pintle assembly
- Large center cockpit
- Fiberglass cockpit table
- Cockpit shower
- 500# windlass w/isolated battery
- Full canvas Bimini
- Full cockpit enclosure (isinglass and screen)Galaxy Pinnacle compass
- Bad Boy internet booster
- West Marine 350 dinghy(12'6") w/15hp Johnson
- 1-1/2" Stainless Steel dinghy davits
- Drop down teak and SS swim platform
- Fold down safety ladder
- Deck box ( 4'x2'x3')
- Customized life ring
- 36" SS cockpit wheel
- Newer cockpit cushions
- Propane locker
- Radar reflector

---

## Walk-Through

---

- Splendide 2100XC washer/dryer combo
- Kenmore heavy duty dehumidifier
- Raritan 22# ice maker
- Fireproof safe
- Teak fishing rod holder
- Penn Senator rod/reel
- Hanging closet with independent dehumidifier
- EPIRB
- Xantrex 3000 remote inverter panel
- Fuel and water tank gauges
- Remote generator starter with shore power switch
- Carbon monoxide alarm
- Tools
- Spare parts on board will stay with equipment listed

---

## Owner's Stateroom

---

- 19" Phillips flat screen TV
- External Surround Sound speakers
- Full size Sealy memory foam mattress
- Built-in ironing board w/iron
- 12,000 BTU air conditioning
- Hatch access to deck area

---

## Mechanical

---

- Yanmar 46HSE - 54hp diesel (new 2011)

- 8kw Kohler 8EOZ diesel generator (new 1999)
- 2ea 2000 gph bilge pumps
- Raritan 6 gal hot water heater
- Hydraulic steering and hydraulic auto pilot
- Cruiseaire 16,000 BTU air conditioning in Main Salon
- Cruiseaire 12,000 BTU air conditioning in Owners Stateroom
- Crosby refrigeration unit w/freezer holding plate 110v
- GE trash compactor
- Water Maker 18gph closet mounted Cruise RO

---

## Electrical

---

- 8kw Kohler 8EOZ diesel generator installed 1999
- Xantrex 3000 Pure Sign Wave inverter
- 4ea 1800amp hrs. golf cart batteries (2012)
- Starter battery for generator
- Twin 30 amp 110 volt shore service

---

## Electronics

---

- Garmin 740 GPS plotter w/charts
- Autohelm ST7000 Autopilot
- Sitex SDD-110 depth sounder
- Galaxy pinnacle compass
- Magellan GPS 1200XL
- Raytheon R20XX radar, raster scan, 24 mile
- TV
- DVD player
- Pioneer complex stereo system
- Autohelm wind
- Kenwood TS-450S SSB
- Standard Horizon GX2100 VHF radio w/AIS
- Acer X193W flat screen

---

## Sails & Rigging

---

- 9 oz. fully battened mainsail
- 150% furling genoa
- (2) Barlow #20 Halyard winches at mast
- (1) Barlow #16 Winch on main boom
- (1) #Barlow 20 on cabin top
- (2) Barlow #32 C Self Tailing Primary Winches in Cockpit
- (1) Barlow #6 on davits

## Exclusions

---

Owner's personal belongings.

## Disclaimer

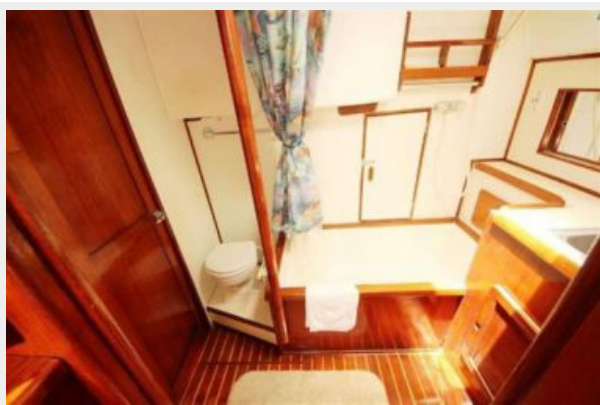
---

The Company offers the details of this vessel or yacht in good faith but cannot guarantee or warrant the accuracy of this information nor warrant the condition of the vessel. A buyer should instruct his representatives, agents, or his surveyors, to investigate such details as the buyer desires validated. This vessel or yacht is offered subject to prior sale, price change, or withdrawal without notice.



# PHOTOS









# CONTACTS

---

Andrey Shestakov, leading yacht broker of the sales department of Shestakov Yacht Sales Inc. Shestakov Yacht Sales Inc., the official representative of the Miami/Fort Lauderdale FL headquarters.

## Contact details

---

Email: [andrey@shestakovyachtsales.com](mailto:andrey@shestakovyachtsales.com)

Web: [shestakovyachtsales.com/en/](http://shestakovyachtsales.com/en/)

## Telephones

---

USA: +1(954)274-4435

## Office hours

---

Monday – Saturday: **9:00 - 21:00** EDT

Sunday: **closed**

## Address

---



Harbour Towne Marina, 850 NE 3rd St,  
STE 213, Dania, FL 33004