

HANCO — HATTERAS



Builder: HATTERAS

Year Built: 1984

Model: Motor Yacht

Price: PRICE ON APPLICATION

Location: United States

LOA: 61' 3" (18.67m)

Beam: 18' 2" (5.54m)

Min Draft: 4' 6" (1.37m)

Max Draft: 4' 11" (1.50m)

Cruise Speed: 8 Kts. (9 MPH)

Max Speed: 12 Kts. (14 MPH)

Our experienced yacht broker, Andrey Shestakov, will help you choose and buy a yacht that best suits your needs **HANCO — HATTERAS** from our catalogue. Presently, at Shestakov Yacht Sales Inc., we have a wide variety of yachts available on our sale's list. We also work in close contact with all the big yacht manufacturers from all over the world.

If you would like to buy a yacht **HANCO — HATTERAS** or would like help answering any questions concerning purchasing, selling or chartering a yacht, please call +1(954)274-4435

TABLE OF CONTENTS

TABLE OF CONTENTS	2
SPECIFICATIONS	5
Basic Information	5
Dimensions	5
Speed, Capacities and Weight	5
Accommodations	5
Hull and Deck Information	6
Engine Information	6
DETAILED INFORMATION	7
Accommodations	7
Galley	7
Laundry	7
Entertainment Systems	7
Navigation Systems	7
Deck Equipment	7
Security, Safety & Fire Equipment	7
Engine Room	8
Tender	8
Exclusions	8
Exclusions	8
Disclaimer	8
PHOTOS	9
Cockpit	9
Center Tow Cleat	9
Grill	9
Aft Deck Seating with Custom Awning	9
Aft Deck Ladder	9
Main Salon Large LED Color TV	10

Aft Deck Bar	10
Main Salon Barrel Chairs	10
Main Salon Looking Forward	10
Office Work Area	10
Main Salon Looking Aft	10
Galley/Teak & Holly Flooring	11
Galley New Stainless Steel Appliances	11
Electronics/Gauges/Shifters	11
Galley Teak & Holly Flooring	11
Clock and Barometers	12
Pilothouse Electronics	12
EPIRB	12
Pilothouse Starboard Side	12
Master Stateroom	13
Master Stateroom King Berth	13
Twin Guest Stateroom	13
Master Head	13
Guest Head	13
Twin Guest Stateroom Bookcase	13
Guest Head	14
Bow Guest Stateroom Upper/Lower Berths	14
Stackable Washer/Dryer	14
Shore Power Both Sides	14
Walkaround Deck/Tideride	15
Air Horns/Custom Canvas Hard Top	15
Front Windshield Awning	15
Bow Seating	15
Oversized Windlass & Chain	16
Flybridge - 3 Helm Chairs	16

Engine Room	16
Flybridge Helm & Electronics	16
Engine Room	16
CONTACTS	17
Contact details	17
Telephones	17
Office hours	17
Address	17

SPECIFICATIONS

Basic Information

Category: Motor Yacht

Sub Category: Cockpit

Model Year: 1984

Year Built: 1984

Refit Year: 2007

Refit Type: Decor

Country: United States

Coast Guard #: 739559

Vessel Top: 2363

Fly Bridge: Yes

Cockpit: Yes

Dimensions

LOA: 61' 3" (18.67m)

Beam: 18' 2" (5.54m)

Min Draft: 4' 6" (1.37m)

Max Draft: 4' 11" (1.50m)

Speed, Capacities and Weight

Cruise Speed: 8 Kts. (9 MPH)

Cruise Speed RPM: 1150 Kts.

Cruise Speed Range: 1000

Max Speed: 12 Kts. (14 MPH)

Displacement: 85000 Pounds

Water Capacity: 350 Gallons

Fuel Capacity: 1175 Gallons

Accommodations

Total Cabins: 3

Total Heads: 3

Crew Cabin: 2

Hull and Deck Information

Hull Material: FRP

Hull Configuration: Semi Vee

Hull Finish: Fiberglass

Engine Information

Engines: 2

Manufacturer: Cummins

Model: QSL9-405 MCD

Engine Type: Inboard

Fuel Type: Diesel

DETAILED INFORMATION

Accommodations

This vessel features three staterooms to comfortably accommodate six owners/guest, with Pullman in main stateroom.

Galley

Stainless Steel Finish Appliances (all new in 2007) Whirlpool range Whirlpool convection oven Whirlpool convection microwave Whirlpool refrigerator Whirlpool freezer + 7 Cu. Ft. freezer on Bridge (2) Icemakers 2-Drawer Fisher-Packel dishwasher Insinkerator disposal

Laundry

Whirlpool stackable washer/dryer (2007)

Entertainment Systems

Salon: 2013 HD 42" TV, Direct TV, Power HD Antenna, VCR, DVD, Stereo, CD player Master Stateroom: Sony TV

Navigation Systems

2013 Raymarine Touch Screen radar E165 72 mile and plotter Furuno Navnet radar 36 mile Robertson/Simrad autopilot (2) Compasses (2) Raymarine video sounders (4) GPS - Plotter Navionics & C-Map4 plotter software (2) Control station – pilothouse and bridge Raymarine Transponder AIS (2) Sonar Airmar wind indicator Airmar speed indicator (3) Icom VHF Radios – plus (2) VHF handheld radios (1) Icom SSB Radios

Deck Equipment

Galleymaid Anchor windlass system (3000 lb. – 2012) (3) Anchors 300' Chain, 300' 3/4" 3-strand nylon aft Galleymaid bow Capstan (1) UMT Davit (1000lb. cap.) (1) Marquipt Davit (1000lb. cap.) (1) Side ladder (1) Tide Rider folding dock stair (1) Tide Rider stairs on wheels (2) Spotlights Many spare parts and re-buildable parts

Security, Safety & Fire Equipment

(1) Camera (Aft) (1) Monitor (Helm) Flagship Marine security system with pressure pads (1) Motion detector (on stairs – going down to Galley) Safe (forward Stateroom closet) (4) Fire detectors (3) CO2 Fire systems (2) engine room, (1) generator room (1) Portable CO2 (8) Fire extinguishers (3) Life rings (1) EPIRB (3) Flares General First Aid kit

Engine Room

Twin Cummins (2) QSL 9 HP 410 (New 2009) Hours 1360/port, 1375/stbd. As of 9/24/14 ZF Drive (1) Northern Lights 16kW generator 2700 hrs. (1) Kilopak 20kW generator (2) Shore power 50 Amp Main engine battery 12 volt Generator starting 12 volt General Service 12-32 volt All batteries A.G.M. Cruisair air conditioning (5) units Watermakers, Inc. watermaker 450 GPD Naiad stabilizer (new 2007 – rebuilt 2013) Sidepower bow thruster 2007 (one size larger than required) Twin Racor fuel filtration 180 Gal. holding tank Fresh water system Hydraulic steering system (2) Helm/control stations (Pilothouse & Bridge) Most head hoses replaced (2013) 3000 Watt inverter/charger

Tender

12.2 Caribe 2005 with Honda 40hp 4-stroke engine

Exclusions

Exclusions are to include but are not limited to, owner's belongings, all the artwork on the walls and many high quality upgrades are excluded from the sale of this vessel. A detailed list of exclusions to be provided at time of sale upon written request.

Exclusions

Owner's personal belongings.

Disclaimer

The Company offers the details of this vessel or yacht in good faith but cannot guarantee or warrant the accuracy of this information nor warrant the condition of the vessel. A buyer should instruct his representatives, agents, or his surveyors, to investigate such details as the buyer desires validated. This vessel or yacht is offered subject to prior sale, price change, or withdrawal without notice.

PHOTOS

Cockpit



Center Tow Cleat



Grill



Aft Deck Seating with Custom Awning



Aft Deck Ladder



Aft Deck Bar



Main Salon Large LED Color TV



Main Salon Barrel Chairs



Main Salon Looking Forward



Main Salon Looking Aft



Office Work Area



Galley/Teak & Holly Flooring

Galley New Stainless Steel Appliances



Galley Teak & Holly Flooring



Electronics/Gauges/Shifters



Pilothouse Electronics



Clock and Barometers



EPIRB



Pilothouse Starboard Side



Master Stateroom King Berth



Master Stateroom



Master Head



Twin Guest Stateroom



Twin Guest Stateroom Bookcase



Guest Head



Guest Head

Bow Guest Stateroom Upper/Lower Berths



Stackable Washer/Dryer



Shore Power Both Sides



Walkaround Deck/Tideride



Air Horns/Custom Canvas Hard Top



Front Windshield Awning



Bow Seating



Oversized Windlass & Chain



Flybridge - 3 Helm Chairs



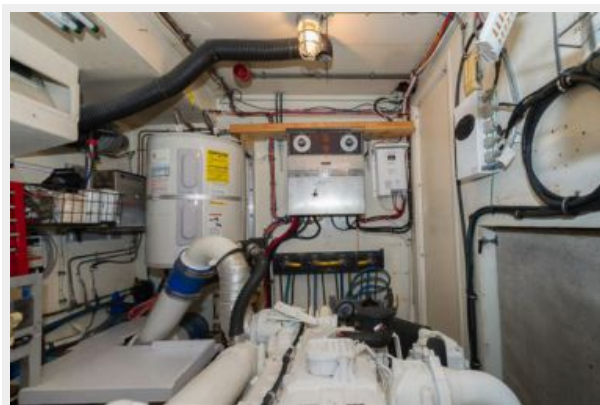
Flybridge Helm & Electronics



Engine Room



Engine Room



CONTACTS

Andrey Shestakov, leading yacht broker of the sales department of Shestakov Yacht Sales Inc. Shestakov Yacht Sales Inc., the official representative of the Miami/Fort Lauderdale FL headquarters.

Contact details

Email: andrey@shestakovyachtsales.com

Web: shestakovyachtsales.com/en/

Telephones

USA: +1(954)274-4435

Office hours

Monday – Saturday: **9:00 - 21:00** EDT

Sunday: **closed**

Address



Harbour Towne Marina, 850 NE 3rd St,
STE 213, Dania, FL 33004