

## 38FT 1988 ISLAND PACKET 38 CUTTER — ISLAND PACKET YACHTS



**Судостроитель:**  
ISLAND PACKET YACHTS

**Год постройки:** 1988

**Модель:** Cutter

**Цена:** ЦЕНА ЯХТЫ ПО ЗАПРОСУ

**Местонахождение:** United States

**Длина общая:** 38' 0" (11.58m)

**Ширина:** 12' 0" (3.66m)

**Макс. осадка:** 5' 0" (1.52m)

Купить 38ft 1988 Island Packet 38 Cutter — ISLAND PACKET YACHTS а также выбрать подходящую вам яхту из нашего каталога яхт вам поможет опытный яхтенный брокер Андрей Шестаков. На сегодняшний день компания Shestakov Yacht Sales Inc. имеет большое количество яхт в собственном списке продаж, а также тесно сотрудничает со всеми крупными яхтенными производителями по всему миру.

Для того чтобы купить яхту 38ft 1988 Island Packet 38 Cutter — ISLAND PACKET YACHTS а также проконсультироваться по любому вопросу связанному с покупкой, продажей, чартером яхт позвоните по телефону **+7(918)465-66-44**.

# ОГЛАВЛЕНИЕ

ОГЛАВЛЕНИЕ	2
ХАРАКТЕРИСТИКИ	3
Основная информация	3
Размеры	3
Скорость, вместимость и масса	3
Размещение	3
Корпус и палуба	3
Информация о двигателе	3
ПОДРОБНОЕ ОПИСАНИЕ	4
Accommodations	4
Galley	4
Electronics	5
Sails and Running Rigging	5
Mechanical	5
Electrical	6
Head Systems	6
Fresh Water Systems	6
Ground Tackle	7
Additional	7
Исключения	7
Отказ от ответственности	7
ФОТОГРАФИИ	8
КОНТАКТЫ	13
Контактная информация	13
Телефоны	13
Время работы	13
Адрес	13

# ХАРАКТЕРИСТИКИ

## Основная информация

Тип судна: Cutter

Подкатегория: Крейсерская яхта

Модельный год: 1988

Год постройки: 1988

Страна: United States

## Размеры

Длина общая: 38' 0" (11.58m)

Ширина: 12' 0" (3.66m)

Макс. осадка: 5' 0" (1.52m)

Трапы: 51' 0" (15.54m)

## Скорость, вместимость и масса

Водоизмещение: 21500 Pounds

Вместимость воды: 157 Gallons

Объем топливного бака: 57 Gallons

## Размещение

Всего кают: 2

Всего ком. состава: 2

## Корпус и палуба

Материал корпуса: Fiberglass

## Информация о двигателе

Двигатели: 1

Производитель: Yanmar

Тип двигателя: Inboard

Тип топлива: Diesel

---

# ПОДРОБНОЕ ОПИСАНИЕ

---

## Accommodations

---

The interior of the Island Packet 38 features a large forward and aft staterooms and a spacious central salon. Beginning forward is an anchor locker in the bow accessed through the forward head. The forward head compartment has a sink with vanity, shower with wrap-around curtain, marine toilet, plenty of storage, two opening ports and an opening hatch. Next aft is the spacious master stateroom with large Pullman berth to starboard and hanging locker and cabinets to port. There are four large drawers under the berth. This stateroom is well ventilated with four opening ports and an overhead hatch. Next aft is the roomy main salon with Island Packet's signature bulkhead mounted fold-up dining table. To starboard is an L-shaped settee that converts to a double berth and also provides seating for the aft-facing nav station. To port is a straight settee. There is an incredible amount of storage beneath and behind both settees. The aft facing nav station is quickly accessible from the cockpit and allows easy communication with the helmsperson. Across from the nav station is the aft head with sink, vanity, shower with wrap-around curtain, and marine toilet. This head has a private entrance from the aft cabin as well as the salon. To starboard of the companionway is the large U-shaped galley with deep double sinks, 3-burner LPG stove with oven, refrigerator/freezer, deluxe teak dish racks and cutlery drawers. To port of the companionway is the entrance to the spacious aft stateroom with wide double berth, dressing seat, bureau and cedar-lined hanging locker, two opening ports, and opening hatch.

- **New** Upholstery
- All ports have screens and curtains
- 12 volt fans
- Teak and holly cabin sole with throw carpets
- Two Webasto air conditioning units (One 16,000 btu and one 9,000 btu.) With remote control unit.

## Galley

---

The large wrap-around U-shaped galley is convenient to both cockpit and salon yet out of companionway traffic.

- 3-burner LPG stove w/oven **New 2005**
- LP gas system with two 10 # aluminum cylinders with OPV (overfill protection valve),

pressure regulator, pressure gauge, and solenoid valve with control accessible to the galley located in the dedicated LP locker located starboard side deck. Manual shut off valves on tank.

- Hot/cold pressure water system
- Adler-Barbour refrigeration **New 2006**
- Oster microwave oven
- Double stainless steel basin

## Electronics

---

- VHF: Standard Horizon Intrepid, and a handheld Standard Horizon HX851
- CHART PLOTTER/ RADAR: Garmin 5212 GPS Chart plotter with 34 Nm Radar Mast mounted
- AUTOPILOT: Autohelm ST6001
- SPEED/WIND/DEPTH: [C3] Autohelm ST60 depth, Autohelm speed/wind,
- SINGLE SIDE BAND RADIO: Icom IC-M710 SSB

## Sails and Running Rigging

---

### Running Rigging

- WINCHES: Lewmar 8, 1 each, forward cockpit, Lewmar 43ST, 2 each, Lewmar 16ST, 2 each
- MAIN SHEET TRAVELER: 4:1 main sheet traveler by Ronstan, serviceable.
- REEFING SYSTEM: Jiffy reefing for main, two reef points, roller furling for the headsails.
- ROLLER FURLING GEAR: Schaefer roller furling gear for the headsail and staysail,

### Sails

- MAINSAIL: Dacron full main, Renewed in 2009, full battens (4), with Doyle cover and flaking.
- HEADSAIL: 110% roller furling headsail, renewed 2009
- STAYSAIL, renewed 2009

## Mechanical

---

- ENGINE: Yanmar 4JH4BE 02418 44 diesel - 6182 hours
- FUEL FILTERS: Remote mounted Racor 500 with engine mounted secondary.
- PRIMING PUMP: 12 volt fuel priming pump

- **THROTTLE CONTROLS:** Cockpit mounted mechanical lever/cable type, with single lever for the throttle and single lever for the clutch.
- **ENGINE MOUNTS AND BED:** Rubber isolation mounts on reinforced fiberglassed bed
- **ENGINE ALARMS:** Low oil pressure alarm and coolant over heat warning audible at helm station.
- **TRANSMISSION:** Straight inboard, m/n KM4A-1, 2.65/1 ratio, s/n 0871, Kanzaki marine transmission
- **PROP SHAFT:** 1 1/4" stainless steel, serviceable.
- **PROP SHAFT STUFFING BOX:** Dripless type by PSS
- **PROPELLER -** Three bladed bronze prop, 17 x 14
- 

---

## Electrical

---

### D.C System

- **VOLTAGE: BATTERIES:** One 100 ah 31, Two 165 ah 4D. AGM (Absorbed Glass Mat) 12 volt batteries
- **CHARGING SYSTEM (BATTERY CHARGER):** Raritan Crown II marine converter , 12 volt 30 amp charger
- **SOLAR PANEL:** Kyocera 120 watt panel, with a Blue Sky 2512i controller aft cockpit locker, securely mounted aft above the dinghy davits.
- **WIND GENERATOR:** A KISS wind gen mounted starboard aft on dedicated aluminum stanchion assembly, toggle switching for brake at cockpit locker

### A.C. System

- **SHORE POWER INLET:** One 30 amp, 125 volt inlet located aft cockpit
- **OUTLETS:** Various A.C. outlets available throughout yacht. GFCI outlets
- **DC/AC INVERTER:** Freedom Marine 20 inverter/charger: Control panel at the nav station

---

## Head Systems

---

- Two manual heads, forward and amidships
- Holding Tank: USCG Marine Sanitation Device type III, holding tank (est. 30 ga)
- Sealand discharge pump.
- Inline Y valves located in the port settee and forward bilge for the marine heads.

---

## Fresh Water Systems

---

- The vessel's freshwater system is supplied from an aluminum tank, with a capacity of 157 gallons, located centerline below the cabin sole.

- Pressure is supplied by a 12 volt Flojet pump with an inline screen/strainer.
- Water tank level gauge at the nav station
- Atwood 10.5 gallon water heater with heat exchanger plumbing to the engine.
- Village Marine "Little Wonder" 7 gallon per hour water maker, m/n LWM-150 located port settee area

---

## Ground Tackle

---

- ANCHOR: Bruce 20 kg (44 lb) plow
- RODE: 150', all chain rode
- WINDLASS: Maxwell Nilsson 12 volt windlass, horizontal gypsy/wildcat
- ANCHOR PLATFORM: Teak bowsprit platform with anchor roller assembly, two anchor rollers, stainless steel with rollers,

---

## Additional

---

- Bottom Paint - 2012
- Personal 406 EPIRB
- DAVITS: Two stainless steel tubular welded construction, with manual block/tackle purchase for dinghy lifting (starboard), manual winch (port)
- TELEVISIONS: Samsung 32" salon with Sony DVD and a Toshiba 18" forward
- STEREO: Eclipse 54400, am/fm/cd, located nav station.

---

## Исключения

---

При продаже яхты исключаются личные вещи владельца.

---

## Отказ от ответственности

---

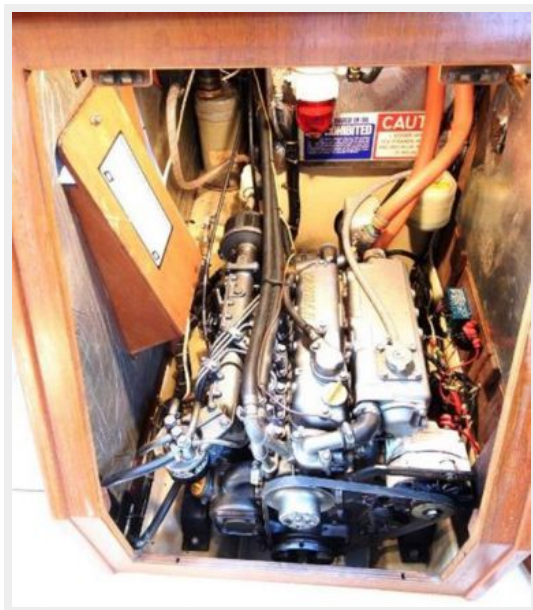
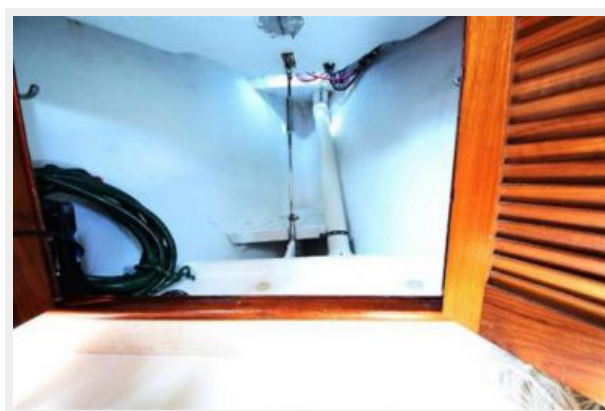
Компания предоставляет описание судна или яхты добросовестно, но не может гарантировать точность этой информации, а также не ручается за техническое состояние. Покупатель должен проинструктировать своих агентов или оценщиков исследовать представленную информацию более подробно, по собственному желанию. Продажа судна или яхты, изменение цены или снятие с продажи будет происходить без предварительного уведомления.

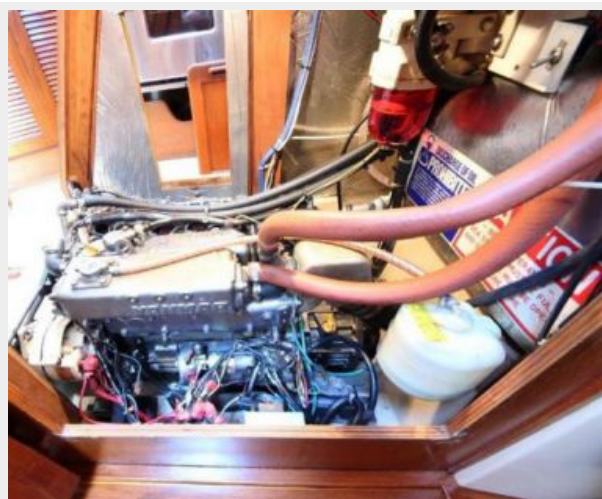
# ФОТОГРАФИИ













# КОНТАКТЫ

---

Андрей Шестаков (Andrey Shestakov) – ведущий яхтенный брокер отдела продаж яхт и судов компании Shestakov Yacht Sales Inc. Официальный представитель Shestakov Yacht Sales Inc. для русскоговорящих клиентов в центральном офисе компании в Майами/Форт Лодердейл/Флорида/США.

## Контактная информация

---

Email: [andrey@shestakovyachtsales.com](mailto:andrey@shestakovyachtsales.com)

Web: [shestakovyachtsales.com](http://shestakovyachtsales.com)

## Телефоны

---

Краснодарский край: **+7(918)465-66-44**

США, Майами, Флорида: **+1(954)274-4435**

## Время работы

---

Понедельник – Суббота: **9:00 - 21:00**  
EDT

Воскресенье: **Закрето**

## Адрес

---



Harbour Towne Marina, 850 NE 3rd St,  
STE 213, Dania, FL 33004