

DEVINE — TARRAB



Судостроитель: TARRAB

Год постройки: 1998

Модель: Моторная яхта

Цена: ЦЕНА ЯХТЫ ПО ЗАПРОСУ

Местонахождение: United States

Длина общая: 88' 0" (26.82m)

Ширина: 22' 0" (6.71m)

Макс. осадка: 6' 0" (1.83m)

Крейс. скорость: 20 Kts. (23 MPH)

Макс. скорость: 23 Kts. (26 MPH)

Купить **DEVINE — TARRAB** а также выбрать подходящую вам яхту из нашего каталога яхт вам поможет опытный яхтенный брокер Андрей Шестаков. На сегодняшний день компания **Shestakov Yacht Sales Inc.** имеет большое количество яхт в собственном списке продаж, а также тесно сотрудничает со всеми крупными яхтенными производителями по всему миру.

Для того чтобы купить яхту **DEVINE — TARRAB** а также проконсультироваться по любому вопросу связанному с покупкой, продажей, чартером яхт позвоните по телефону **+7(918)465-66-44**.

ОГЛАВЛЕНИЕ

ОГЛАВЛЕНИЕ	2
ХАРАКТЕРИСТИКИ	6
Основная информация	6
Размеры	6
Скорость, вместимость и масса	6
Корпус и палуба	6
Информация о двигателе	6
ПОДРОБНОЕ ОПИСАНИЕ	7
Accommodations	7
Aft Deck	7
Salon	8
Galley	8
On-Deck Day Head	8
Pilothouse/Lower Helm Station	8
Master Stateroom	9
VIP Guest Stateroom	9
Port Guest Stateroom	10
Starboard Guest Stateroom	10
Crew Quarters	11
Flybridge/Upper Helm/Boat Deck	11
Toys and Tenders	12
Transom/Swim Platform	12
Hull and Deck	12
Electrical System Details	12
Mechanical Equipment & Details	13
Additional Upgrades	13
EXCLUSIONS	14
Remarks	14

Исключения	14
Отказ от ответственности	14
ФОТОГРАФИИ	15
Aft Deck	15
Aft Deck	15
Aft Deck	15
Salon seating Port	15
Salon seating Starboard	15
Bar - Salon Port forward	15
Dining - Salon Starboard forward	16
Galley	16
Helm - Port	16
Pilothouse	16
Helm - Center	16
Helm - Starboard	16
Helm - Desk Console - Starboard	17
Pilothouse Guest Seating	17
On-Deck Day Head	17
Pilothouse Guest Seating	17
Flybridge looking Aft	17
Flybridge looking Forward	17
Arch / Electronics	18
Flybridge Helm	18
Flybridge Bar	18
Flybridge Helm	18
Boat Deck - davit	18
Boat Deck - tender & toys	18
Hatch to Main Deck	19
Master Stateroom	19

Master Stateroom	19
Master Stateroom	19
Master Bath	19
Master Bath	19
Companionway looking Aft to Master Stateroom	20
Stairway to Main Deck from Staterooms	20
VIP Stateroom	20
VIP Stateroom	20
VIP Bath	21
VIP Stateroom	21
VIP Bath	21
Port Guest Stateroom	21
Port Guest Bath	22
Starboard Guest Stateroom	22
Starboard Guest Bath	22
Fore Deck - Sun Pad	22
Bow - Anchor & Windlass	23
Jacuzzi & Seating on Fore Deck	23
Port Side Deck - Bow access	23
Crew Dinette	23
Crew Mess	24
Crew Area - Laundry	24
Crew Quarters	24
Crew Head	24
Stern - Garages closed	24
Aft View with Garages open	24
Engine Room	25
Engine Room	25
Engine Room	25

Engine Room	25
Upper Deck Arrangement	25
Main Deck Arrangement	25
Haul-out 10/2014	26
Lower Deck Arrangement	26
Haul-out 10/2014	26
Haul-out 10/2014	26
Haul-out 10/2014	26
Haul-out 10/2014	26
Haul-out 10/2014	27
Haul-out 10/2014	27
Haul-out 10/2014	27
КОНТАКТЫ	28
Контактная информация	28
Телефоны	28
Время работы	28
Адрес	28

ХАРАКТЕРИСТИКИ

Основная информация

Тип судна: Моторная яхта

Подкатегория: Flybridge

Модельный год: 1998

Год постройки: 1998

Страна: United States

Размеры

Длина общая: 88' 0" (26.82m)

Ширина: 22' 0" (6.71m)

Макс. осадка: 6' 0" (1.83m)

Скорость, вместимость и масса

Крейс. скорость: 20 Kts. (23 MPH)

Макс. скорость: 23 Kts. (26 MPH)

Вместимость воды: 260 Gallons

Объем топливного бака: 2480 Gallons

Корпус и палуба

Материал корпуса: Fiberglass

Информация о двигателе

Двигатели: 2

Производитель: Caterpillar

Модель: 3412 DITA

Тип двигателя: Inboard

Тип топлива: Diesel

ПОДРОБНОЕ ОПИСАНИЕ

Accommodations

DEVINE features interior joinery of beautiful Argentinean blonde wood, similar to maple, with a high gloss clear coat finish. The decor throughout the guest areas is light and crisp with neutral tones of cream/taupe upholstery and window treatments, and beige carpeting.

The Pilothouse accommodates an impressive display of electronics with comfortable seating for both captain and guests. Wing doors port and starboard provide easy access to the side decks and to the Jacuzzi tub on the foredeck.

A wide companionway leads forward from the pilothouse to a central foyer below with access to the ensuite staterooms. The full-width Master Stateroom is aft with a center-line king berth. The Port Guest Stateroom has twin lower berths while the Starboard Guest Stateroom has criss-cross upper/lower berths. The VIP Stateroom is all the way forward with a center-line queen berth.

Aft of the pilothouse is the very well-equipped Galley with sliding pocket door to close it off from any formal entertaining being done. Across from the galley, to port, is a Day Head located outboard of the stairs leading to the flybridge.

The Flybridge has a full steering station, curved bar and seating for 20 people for dinner service. Also on the flybridge are a gas-fired grill, a 10-person life raft with auto-deploy, 15' tender, and davit.

Next aft is the Main Salon which graciously incorporates a full-service bar, dining area, and comfortable lounging area with entertainment center.

The open air teak Aft Deck is efficiently shaded by the Boat Deck above and shade curtains. There is also a small bar here. A central staircase easily accesses the large swim platform and clever transom doors to the Lazarette and personal watercraft "garages". Also located on the aft deck is the wide staircase leading up to the boat deck, and a companionway leading down to the Engine Room and separate Crew Quarters below.

Aft Deck

- Teak-laid aft deck
- Teak dining table with custom canvas cover
- 6 teak dining chairs with canvas cushions
- Staircase to flybridge, to port
- Sliding glass door entry to Salon
- Bar
- Ice storage, aft; can also hold wine bottles while entertaining
- Center stairs from aft deck to swim platform

- Stairway starboard, leading down to Crew Quarters and Engine Room

Salon

- Sectional chaise lounge sofa, starboard aft
- Glass-topped cocktail table in front of sofa
- 3 end tables and lamps
- Sofa, port aft, facing sectional sofa opposite
- Entertainment center, aft to port, with Samsung 46" flat screen TV (2007), Samsung Blu-Ray DVD player (2014) and Denon surround-sound system
- Granite-topped curved wood bar with three cushioned fixed bar stools, forward, to port
- Dining area, forward and starboard, with inlaid wood pedestal table, four (4) dining chairs, and storage buffet with mirrored wall, built-in between Dining area and Galley

Galley

- GE Profile double-door refrigerator/freezer with in-door water & ice
- GE oven with 4-burner electric /ceramic cook-top
- GE Space Saver microwave
- GE Potscrubber 780 dishwasher
- Double stainless steel sink with single lever faucet
- In-sink garbage disposal unit
- Under-cabinet coffee maker
- Under-counter stainless steel ice maker (2013)
- Granite counter tops
- Ample storage in overhead cabinets, under counter cabinets and drawers
- Tiled floor

On-Deck Day Head

- Located opposite Galley, just aft of flybridge staircase
- Sink and mirrored vanity with storage below
- Mirrored ceiling
- Raritan fresh water electric toilet
- Marble tile flooring

Pilothouse/Lower Helm Station

- Black leather pedestal helm chair
- Black leather raised bench seating for guests

- Storage cabinet for charts, etc.
- Teak and holly sole
- Sony CD player (2013)
- On-deck Day Head located to port, opposite Galley

ELECTRONICS:

- Raymarine E127 multi-function display 2014
- Raymarine ISO speed and depth new 2014 with E127 integration
- Standard Horizon VHF
- Furuno FR-7110 radar interfaced with GPS
- Robertson AP 20 auto pilot
- Robertson AP 30 auto pilot
- Two (2) Silvia 125 compasses
- Skycell with cellular and fax capabilities
- NERA satellite phone
- Panasonic integrated intercom system and phones, throughout yacht (8 sets)
- JVC closed-circuit video camera (Engine Room & Aft Deck)

Master Stateroom

- Full-width, located aft
- King size bed on center-line
- Built-in cabinetry, port and starboard
- Lighting beneath cabinetry and bed
- Walk-in closet, to port, opposite ensuite bath
- Lamps on either side of bed
- Opening ports
- Toshiba 42" TV (2011) to port

ENSUITE BATH:

- Marble tile floor and walls
- Frameless glass enclosed shower/jetted Jacuzzi tub
- Sink and mirrored vanity with storage below
- Raritan fresh water electric toilet

VIP Guest Stateroom

- Located all the way forward
- Queen-size bed on center-line
- Under-bed lighting
- Mirrored forward bulkhead

- Built-in cabinetry on both sides for storage
- Lamps
- Closet to port; ensuite bath opposite
- Philips 23" TV (2004) mounted portside

ENSUITE BATH:

- Enclosed stall shower
- Sink and mirrored vanity with storage below
- Storage cabinet above toilet
- Raritan fresh water electric toilet

Port Guest Stateroom

- Twin lower beds
- Built-in storage cabinetry; drawers below berths
- Night stand between beds with lamp
- Mirrored wall behind beds
- Overhead lighting
- Closet, to port
- Philips 15" TV (2004)

ENSUITE BATH:

- Located forward of the inward berth
- Enclosed stall shower
- Sink and mirrored vanity with drawers and doors
- Raritan fresh water electric toilet

Starboard Guest Stateroom

- Upper and lower, criss-cross single over double, berths
- Under-berth cabinetry and drawers
- Night stand and lamp
- Overhead lighting
- Philips 15" TV (2003)

ENSUITE BATH:

- Located forward of the berths
- Enclosed stall shower
- Sink and mirrored vanity with drawers and doors
- Raritan fresh water electric toilet

Crew Quarters

- Single upper and double lower berths
- Sink and vanity with storage below
- Mirror
- Enclosed stall shower
- Raritan fresh water electric toilet
- Philips 15" TV (2003) in crew cabin
- Samsung 22" TV (2013) in crew mess area
- Crew mess area with sink, refrigerator and microwave, dinette with two seats (can be converted to an additional bed), mirrored bulkhead, and rod storage
- Stacked washer and dryer
- Engine Room access forward, though water-tight door

Flybridge/Upper Helm/Boat Deck

- Raymarine E97 with radar, hybrid touch
- Furuno radar repeater
- Robertson AP 300X auto pilot control
- West Marine VHF radio
- Naiad Marine stabilizer control
- Maxwell windlass control
- ACR search light control
- Keypower bow thruster control
- Upper Helm - Clarion CD/Radio (2011)
- Built-in seating, port and starboard, with storage beneath
- 2 pedestal tables with blue canvas covers
- 2 chairs, suitable for fishing
- Bench helm seating
- Hardtop with open sides and Eisenglass zip curtains
- Curved bar with sink and 3 pedestal bar stools
- Upper bar - Westinghouse 32" portable flat screen TV (2013)
- Gas BBQ

BOAT DECK:

- 1500 lb stainless steel davit and crane, rebuilt by Nautical Outfitter 2013
- 15' Nautica rigid bottom inflatable tender w/50 hp 4 stroke Yamaha outboard

Toys and Tenders

- 15' Nautica tender with Yamaha 50 hp 4-stroke outboard engine
- Kawasaki 1100SX (2004) jet ski
- Two (2) stand-up paddle boards
- Kayak

Transom/Swim Platform

- Removable stainless steel hand rails across swim platform
- Power inlet/outlet with Glendinning cable masters
- Water, phone and cable TV outlets
- Garages on each transom corner to house water toys

Hull and Deck

- Fiberglass hull, house and superstructure
- White Awlgrip paint with black accent and boot stripes
- Painted, non-skid decks
- Fresh bottom paint, October 2014
- New zincs, October 2014
- Teak-laid Aft Deck, redone in 2014
- New teak sole added, port and starboard, just outside Pilothouse doors
- Maxwell vertical windlass, 3,500 lb capacity with two (2) foot switches & two (2) remote stations (Pilothouse & Flybridge)
- 1500 lb low-profile stainless steel davit (rebuilt by Nautical Outfitters 2013)
- Dual Kahlenberg air horns
- Underwater lights

Electrical System Details

- Twin Onan 35 kW 240V/120V, 60 Hz marine generators; rebuilt 2008
 - Port – 3030 hours SMOH; Starboard – 2968 hours SMOH
 - Freshwater cooling
 - Strainers at sea water intakes
 - Racor fuel filters
 - Water lift muffler
 - Panel with oil pressure, water temperature, amp meter and hours meter in crew area
 - Remote start at pilothouse, unit fully protected for high water temperature, low oil pressure and overload
- Electrical panel at Pilothouse with 120V and 240V AC circuit breakers, 12V DC circuit

breakers, AC and DC amp and volt meters, and remote panels for generators

- Electrical panel at crew area with 120V and 240V AC circuit breakers, 12V DC circuit breakers, AC and DC amp and volt meters; sliding lock main circuit breakers to select AC power source, and rotary selector switches to select, disconnect and parallel DC power sources
- Starting batteries new 2013 for main engines and generators
- Service batteries

Mechanical Equipment & Details

- Twin 1350 hp Caterpillar 3412 C diesel engines, fresh water cooled; rebuilt in 2005
- ZF transmissions, new 2005
- Engine synchronizers
- Alternators
- Fuel and oil filters
- Water separator fuel filter for each main engine
- Mechanical gauge panels
- Air-Sep filters
- Ace adjustable mounts
- Exclusive underwater exhaust for minimum noise, cooler engine room and enhanced engine performance
- Naiad 254 hydraulic stabilizers (rebuilt 2006)
- Key Power hydraulic bow thrusters
- Hynautic controls and power assist steering, two stations (steering system rebuilt 2006)
- Matrix 1000 gpd water maker (rebuilt 2013)
- Water heater (new 2013)
- 3 Cruisair 48,000 BTU units with Smart Starts (new 2014), pumps (rebuilt 2013)
- Stacked washer and dryer, in crew mess area

Additional Upgrades

- Maintenance haul-out just completed October 2014: fresh bottom paint; new zincs
- ZF transmissions, new 2005
- Water maker, rebuilt 2013
- Water heater, new 2014
- Steering system, rebuilt 2006
- Davit, rebuilt 2014
- DirecTV satellite system, new 2013
- Interior, remodeled 2013
- Jet ski garage, rebuilt 2013
- Bilge pumps replaced 2008 and 2013, as necessary
- Hot tub, rebuilt 2012

- Fuel transfer system, rebuilt 2006; new pump 2013
- A/C pumps rebuilt 2013 for three (3) new 2014 Cruisair 48,000 BTU air conditioning units

EXCLUSIONS

Items including, but not limited to, owner's personal effects are excluded from any sale. Complete list to be presented upon contract.

Remarks

DEVINE offers remarkable interior and exterior volume for a vessel her size with her spacious flybridge, roomy aft deck, 22' beam, and long, wide-body deck house. Her modern design affords mega-yacht accommodations and sport yacht nimble performance with a 20-knot cruising speed.

Engine and equipment areas are all neat and clean and provide easy access to all systems. Consistently well maintained; this yacht features quality modern machinery. More than ample storage areas provide enhancements to the yacht's cruising capability.

DEVINE is ready to provide many years of enjoyable cruising to a new owner.

Исключения

При продаже яхты исключаются личные вещи владельца.

Отказ от ответственности

Компания предоставляет описание судна или яхты добросовестно, но не может гарантировать точность этой информации, а также не ручается за техническое состояние. Покупатель должен проинструктировать своих агентов или оценщиков исследовать представленную информацию более подробно, по собственному желанию. Продажа судна или яхты, изменение цены или снятие с продажи будет происходить без предварительного уведомления.

ФОТОГРАФИИ

Aft Deck



Aft Deck



Aft Deck



Salon seating Port



Salon seating Starboard



Bar - Salon Port forward



Dining - Salon Starboard forward



Galley



Pilothouse



Helm - Port



Helm - Center



Helm - Starboard



Helm - Desk Console - Starboard



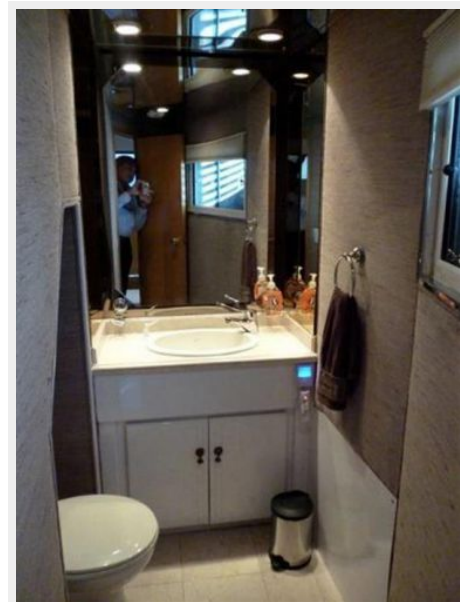
Pilothouse Guest Seating



Pilothouse Guest Seating



On-Deck Day Head



Flybridge looking Aft



Flybridge looking Forward



Arch / Electronics



Flybridge Helm



Flybridge Helm



Flybridge Bar



Boat Deck - davit



Boat Deck - tender & toys



Hatch to Main Deck



Master Stateroom



Master Stateroom



Master Stateroom



Master Bath



Master Bath



Companionway looking Aft to Master Stateroom



Stairway to Main Deck from Staterooms



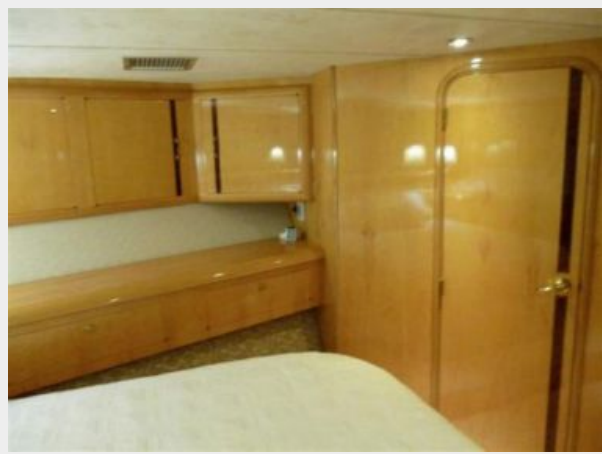
VIP Stateroom



VIP Stateroom



VIP Stateroom



VIP Bath



VIP Bath



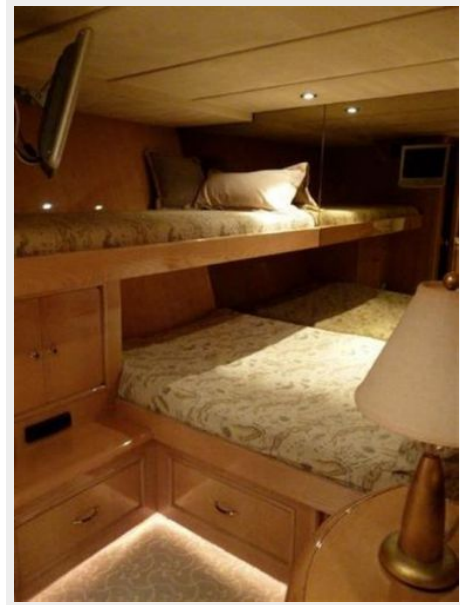
Port Guest Stateroom



Port Guest Bath



Starboard Guest Stateroom



Starboard Guest Bath



Fore Deck - Sun Pad



Jacuzzi & Seating on Fore Deck



Bow - Anchor & Windlass



Port Side Deck - Bow access



Crew Dinette



Crew Mess



Crew Area - Laundry



Crew Quarters



Crew Head



Aft View with Garages open



Stern - Garages closed



Engine Room



Engine Room



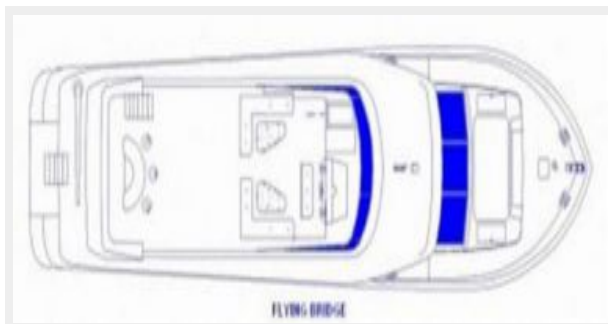
Engine Room



Engine Room



Upper Deck Arrangement



Main Deck Arrangement



Lower Deck Arrangement



Haul-out 10/2014



Haul-out 10/2014



Haul-out 10/2014



Haul-out 10/2014



Haul-out 10/2014



Haul-out 10/2014



Haul-out 10/2014



Haul-out 10/2014



КОНТАКТЫ

Андрей Шестаков (Andrey Shestakov) – ведущий яхтенный брокер отдела продаж яхт и судов компании Shestakov Yacht Sales Inc. Официальный представитель Shestakov Yacht Sales Inc. для русскоговорящих клиентов в центральном офисе компании в Майами/Форт Лодердейл/Флорида/США.

Контактная информация

Email: andrey@shestakovyachtsales.com

Web: shestakovyachtsales.com

Телефоны

Краснодарский край: **+7(918)465-66-44**

США, Майами, Флорида: **+1(954)274-4435**

Время работы

Понедельник – Суббота: **9:00 - 21:00**
EDT

Воскресенье: **Закрито**

Адрес



Harbour Towne Marina, 850 NE 3rd St,
STE 213, Dania, FL 33004