

TOBY — CERRI CANTIERI NAVALI



Builder: [Cerri Cantieri Navali](#)

Year Built: 2009

Model: Motor Yacht

Price: PRICE ON APPLICATION

Location: Italy

LOA: 103' 5" (31.50m)

Beam: 23' 10" (7.26m)

Max Draft: 4' 8" (1.40m)

Cruise Speed: 32 Kts. (37 MPH)

Max Speed: 40 Kts. (46 MPH)

Our experienced yacht broker, Andrey Shestakov, will help you choose and buy a yacht that best suits your needs Toby — Cerri Cantieri Navali from our catalogue. Presently, at Shestakov Yacht Sales Inc., we have a wide variety of yachts available on our sale's list. We also work in close contact with all the big yacht manufacturers from all over the world.

If you would like to buy a yacht Toby — Cerri Cantieri Navali or would like help answering any questions concerning purchasing, selling or chartering a yacht, please call +1(954)274-4435

TABLE OF CONTENTS

TABLE OF CONTENTS	2
SPECIFICATIONS	3
Basic Information	3
Dimensions	3
Speed, Capacities and Weight	3
Accommodations	3
Hull and Deck Information	3
Engine Information	4
DETAILED INFORMATION	5
MAIN CHARACTERISTICS	5
ACCOMMODATION	5
PROPULSION SYSTEM	5
INTERIORS	5
ELECTRONICS	5
EQUIPMENT	5
Exclusions	5
Disclaimer	6
PHOTOS	7
CONTACTS	10
Contact details	10
Telephones	10
Office hours	10
Address	10

SPECIFICATIONS

Basic Information

Category: Motor Yacht

Model Year: 2009

Year Built: 2009

Country: Italy

Dimensions

LOA: 103' 5" (31.50m)

Beam: 23' 10" (7.26m)

Max Draft: 4' 8" (1.40m)

Speed, Capacities and Weight

Cruise Speed: 32 Kts. (37 MPH)

Max Speed: 40 Kts. (46 MPH)

Displacement: 80000 Pounds

Water Capacity: 2000 Gallons

Fuel Capacity: 10000 Gallons

Accommodations

Total Cabins: 5

Sleeps: 10

Crew Sleeps: 5

Hull and Deck Information

Hull Material: GRP

Engine Information

Engines: 2

Manufacturer: MTU

Model: MTU 2 x 2434 HP

Fuel Type: Diesel

DETAILED INFORMATION

MAIN CHARACTERISTICS

Model: Cerri 102 Builder: Cerri Cantieri Navali Length: 31.50 m Beam: 7.26 m Draft: 1.40 m Year: 2009 Displacement: 80 000 Flag: Italy Hull Material: GRP Deck: GRP + teak Fuel capacity: 10 000 l Fresh water capacity: 2 000 l

ACCOMMODATION

Number of cabins: 5 Guests sleeping: 10 Configuration: Owner suite, 2 vip cabins, 2 twin cabins

PROPULSION SYSTEM

Main engines: MTU 2 x 2.434 HP Diesel Engine hours: 1 600 Generators: 2 x 33 Kw KOHLER

INTERIORS

Great hall of this wonderful open: two large white sofas welcome guests as they enter the boat. The main deck is equipped with a bathroom. The large dining table is positioned behind the console and is also served by a small bar. The interiors are in treaty oak and the white leather inserts. Down below we are greeted by a charming dinette for listening to music or watching tv. The cabins are 5: all with en-suite bathroom. The crew area can accommodate 5 crew members.

ELECTRONICS

• Raymarine Vhf 2 • 48 Mile Radar Raymarine • Raymarine Autopilot • Gps/Plotter Raymarine • Raymarine Fishfinder • Satellite Antenna For Communications • Satellite Tv: Sky In All Cabins • Wi-Fi

EQUIPMENT

• Teak cockpit • Teak deck • Hydraulic gangway • Hydraulic bath scale • Bimini top on the fly • Novurania 4.80-tender with 60 Hp Johnson outboard motor • Personal watercraft Sea Doo 250 Hp

Exclusions

Owner's personal belongings.

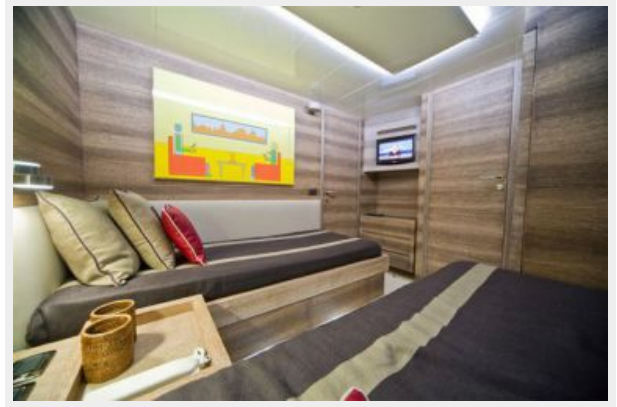
Disclaimer

The Company offers the details of this vessel or yacht in good faith but cannot guarantee or warrant the accuracy of this information nor warrant the condition of the vessel. A buyer should instruct his representatives, agents, or his surveyors, to investigate such details as the buyer desires validated. This vessel or yacht is offered subject to prior sale, price change, or withdrawal without notice.

PHOTOS







CONTACTS

Andrey Shestakov, leading yacht broker of the sales department of Shestakov Yacht Sales Inc. Shestakov Yacht Sales Inc., the official representative of the Miami/Fort Lauderdale FL headquarters.

Contact details

Email: andrey@shestakovyachtsales.com

Web: shestakovyachtsales.com/en/

Telephones

USA: +1(954)274-4435

Office hours

Monday – Saturday: **9:00 - 21:00** EDT

Sunday: **closed**

Address



Harbour Towne Marina, 850 NE 3rd St,
STE 213, Dania, FL 33004