

## MINHA MARIA — AZIMUT



**Судостроитель:** [AZIMUT](#)

**Год постройки:** 1997

**Модель:** Моторная яхта

**Цена:** **ЦЕНА ЯХТЫ ПО ЗАПРОСУ**

**Местонахождение:** United States

**Длина общая:** 50' 0" (15.24m)

**Ширина:** 14' 8" (4.47m)

**Макс. осадка:** 4' 1" (1.24m)

**Крейс. скорость:** 23 Kts. (26 MPH)

**Макс. скорость:** 26 Kts. (30 MPH)

Купить **Minha Maria — AZIMUT** а также выбрать подходящую вам яхту из нашего каталога яхт вам поможет опытный яхтенный брокер Андрей Шестаков. На сегодняшний день компания **Shestakov Yacht Sales Inc.** имеет большое количество яхт в собственном списке продаж, а также тесно сотрудничает со всеми крупными яхтенными производителями по всему миру.

Для того чтобы купить яхту **Minha Maria — AZIMUT** а также проконсультироваться по любому вопросу связанному с покупкой, продажей, чартером яхт позвоните по телефону **+7(918)465-66-44**.

# ОГЛАВЛЕНИЕ

ОГЛАВЛЕНИЕ	2
ХАРАКТЕРИСТИКИ	4
Обзор	4
Основная информация	4
Размеры	4
Скорость, вместимость и масса	5
Размещение	5
Корпус и палуба	5
Информация о двигателе	5
ПОДРОБНОЕ ОПИСАНИЕ	6
Vessel Walk-Thru	6
Salon	6
Dinette	6
Galley	6
Master Stateroom	6
Master Head, Large Room	7
Port Guest Stateroom	7
Starboard Guest Stateroom	7
Guest Head, Large Room	7
Upper Bridge Helm	7
Flybridge	8
Electronics - Lower Pilot Helm	8
Electrical System	8
Mechanical Equipment	8
Engine Room	9
Aft Deck	9
Cockpit	9
Deck	9

Hull	9
Recent Upgrades	10
Exclusions	10
Broker's Remarks	10
Исключения	10
Отказ от ответственности	10
<b>ФОТОГРАФИИ</b>	<b>11</b>
Salon	11
Galley	11
Helm	11
Salon	11
Salon	12
Galley	12
Galley	12
Galley	12
Master Stateroom	12
Master Stateroom	12
Master Stateroom	13
Helm	14
Entrance to Engine Room	15
Engine Room	15
<b>КОНТАКТЫ</b>	<b>18</b>
Контактная информация	18
Телефоны	18
Время работы	18
Адрес	18

# ХАРАКТЕРИСТИКИ

## Обзор

*Minha Maria, 1997 50' Azimut Flybridge features powerful, sport yacht exterior design with elliptical windows and a sharply raked profile that combines speed, luxury and performance. It has a posh, three stateroom interior with two heads. The gourmet galley is on the same level as the salon, making this yacht one that the chef and owner's guests can socialize easily. Minha Maria has numerous updates to equipment and interior soft goods that make it a very desirable boat to own. She is fast, sleek and ready for her new owner's personal enjoyment.*

*Three staterooms, nice size cockpit, underwater lights, CAT diesels, Sat TV, upper and lower helms and the Euro look and feel that Azimut owns. This Azimut 50' runs great and looks and feels newer than she is. Her owner has done a great job of maintaining her.*

*Don't miss the opportunity to own an Azimut 50 that is ahead of her time and always remains sleek. Easy to inspect, call now, seller says ALL offers considered!*

## Основная информация

**Тип судна:** Моторная яхта

**Подкатегория:** Flybridge

**Модельный год:** 1997

**Год постройки:** 1997

**Страна:** United States

## Размеры

**Длина общая:** 50' 0" (15.24m)

**Ширина:** 14' 8" (4.47m)

**Макс. осадка:** 4' 1" (1.24m)

---

## Скорость, вместимость и масса

---

**Крейс. скорость:** 23 Kts. (26 MPH)

**Крейсерская скорость поворота:** 1850 Kts.

**Макс. скорость:** 26 Kts. (30 MPH)

**Водоизмещение:** 38000 Pounds

**Вместимость воды:** 158 Gallons

**Вместимость сточного бака:** 33 Gallons

**Объем топливного бака:** 475 Gallons

---

## Размещение

---

**Всего кают:** 3

**Всего ком. состава:** 2

---

## Корпус и палуба

---

**Материал корпуса:** Fiberglass

---

## Информация о двигателе

---

**Двигатели:** 2

**Производитель:** Caterpillar

**Модель:** 3176B

**Тип топлива:** Diesel

---

# ПОДРОБНОЕ ОПИСАНИЕ

---

## Vessel Walk-Thru

---

*Minha Maria is a 3 stateroom, 2 large head configuration. As you enter the salon the spacious u-shaped sofa is to port and the entertainment center is starboard. The lower helm is to port and the galley is starboard. Below decks are port and starboard twin berth staterooms. The guest head is adjacent to the port guest staterooms, and can also be entered from the companionway. Forward is the master stateroom with island queen berth and ensuite head with large stall shower, head and bidet.*

## Salon

---

- Overhead lighting
- Privacy curtains aft (new)
- A/C controls
- Bose AM/FM stereo system
- Sony Flatscreen TV
- Omnivision VHS
- U-shaped leather sofa
- Surround sound system
- Two occasional chairs
- Spacious and comfortable

## Dinette

---

Dining table is at salon sofa and high/low capable.

## Galley

---

- Granite counter tops
- Two burner electric range top
- Microwave oven
- Refrigerator
- Sink
- Galley storage cabinets
- Coffee maker

## Master Stateroom

---

- Centerline queen, forward
- Storage beneath berth
- Cushioned head board
- Large ensuite head w/ stall shower

- Mirrored bulkhead
- Bidet

---

## Master Head, Large Room

---

- Toilet
- Huge stall shower
- Bidet
- Mirrored vanity
- Storage cabinets
- Sink

---

## Port Guest Stateroom

---

- Twin single berths
- Flatscreen TV
- Night stand
- Bed side lamp
- A/C controls
- Hanging locker
- Mirrored wall
- Cushioned headboard
- Blinds

---

## Starboard Guest Stateroom

---

- Twin single berths
- Flatscreen TV
- Night stand
- Bed side lamp
- A/C controls
- Hanging locker
- Mirrored wall
- Cushioned headboard
- Blinds

---

## Guest Head, Large Room

---

- Port side with entry from Port Stateroom and Companionway
- Large stall shower
- Sink
- Toilet
- Mirrored vanity
- Storage cabinet

---

## Upper Bridge Helm

---

- Two person helm seat

- Mathers single level controls
- Trim tabs
- Windlass controls
- Windshield wipers

## Flybridge

---

- Access via cockpit stairway
- Windscreen
- Bimini Top with LED lighting
- Two seat captain's seating
- Rounded settee with seating for 6
- Stainless grab rails
- Sink/drink chiller
- Seating and instrument covers
- Gauges switches and alarms
- Windlass switch
- RayMarine E-120 Chart Plotter
- RayMarine Radar
- RayMarine Autopilot
- Icom VHF Radio
- Sirius Weather Receiver
- RayMarine Rudder indicator
- RayMarine Compass
- Controls and steering
- Bow thruster control
- Spot light control
- Trim Tab control
- Sun pad

## Electronics - Lower Pilot Helm

---

- RayMarine Autopilot ST8002
- RayMarine E-80 Chart plotter
- RayMarine Radar
- Icom, IC-M602, VHF Radio
- Sirius Weather receiver
- RayMarine ST-60 rudder angle indicator
- RayMarine, ST-60 control
- Bow thruster control
- Spot light control
- Engine room camera
- Aft deck camera

## Electrical System

---

- Kohler 13.5kw diesel generator (3164 hrs)
- Battery charger
- 50 AMP/240V Shore Power
- Batteries (New 2012)

## Mechanical Equipment

---

- Toilets upgraded to freshwater flush



- Vetus Bow thruster, 6 hp

## Engine Room

---

- CAT 3176B Engines
- Kohler 13.5kw genset
- Racor filters
- Dripless shaft seals
- Oil change system
- Cruisair 46,000 BTU AC system
- ZF gears
- Fireboy Halon 1301 system

## Aft Deck

---

- Flat screen TV
- Teak decking
- Overhead lighting
- Shore power connection
- Cable TV connection
- Swim platform w/ ladder
- Lounge seating
- Crew quarters access
- Ergonomically designed

## Cockpit

---

- Access hatch to engine room
- Swim platform w/ ladder
- Hot & cold shower
- Glendenning Cablemaster
- Bench seating
- Storage lockers
- Lighting
- Electrical system monitor

## Deck

---

- **Underwater lights**
- Anchor w/chain
- Bruce anchor
- Anchor windlass, Lofrans
- Saltwater washdown at bow

## Hull

---

- Fiberglass

- White

## Recent Upgrades

---

- Replaced AC pump and through hull valve (2014)
- Cleaned out AC lines (2014)
- CAT engine coolers cleaned (2014)
- New Bridge Chart Plotter E 120 (2013)
- Two new batteries (2013)
- New bottom paint (2012)
- New interior soft goods (2011)

## Exclusions

---

Owner's personal items, tools, etc.

## Broker's Remarks

---

This vessel is a fine example of Italian craftsmanship and shows in good condition, both inside and out. She is ready to cruise and shows as well maintained. Minha Maria is a perfect example of Azimut being ahead of the times when they built her. Some new boats don't have all the features that she has. Don't miss this opportunity!

## Исключения

---

При продаже яхты исключаются личные вещи владельца.

## Отказ от ответственности

---

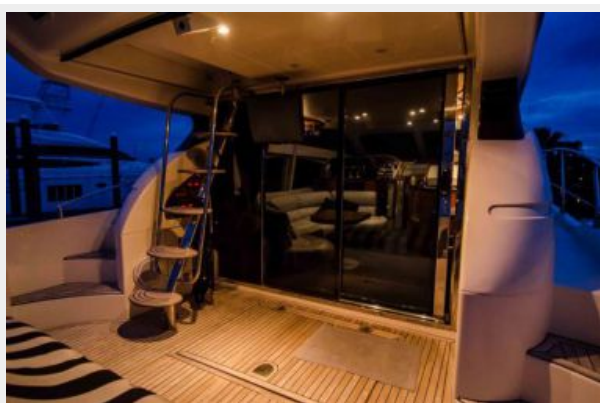
Компания предоставляет описание судна или яхты добросовестно, но не может гарантировать точность этой информации, а также не ручается за техническое состояние. Покупатель должен проинструктировать своих агентов или оценщиков исследовать представленную информацию более подробно, по собственному желанию. Продажа судна или яхты, изменение цены или снятие с продажи будет происходить без предварительного уведомления.

# ФОТОГРАФИИ

Salon



Galley



Helm



Salon



**Salon**



**Galley**



**Galley**



**Galley**



**Master Stateroom**

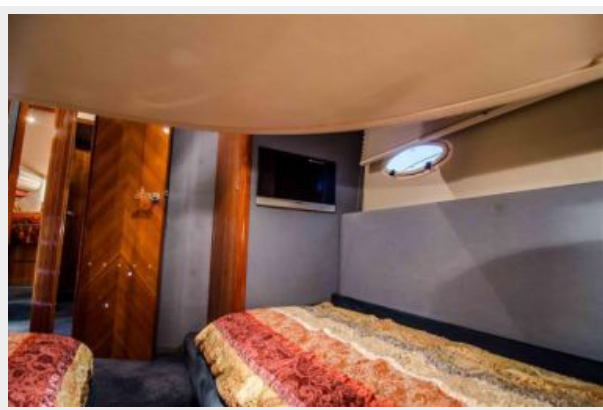


**Master Stateroom**





## Master Stateroom





## Helm



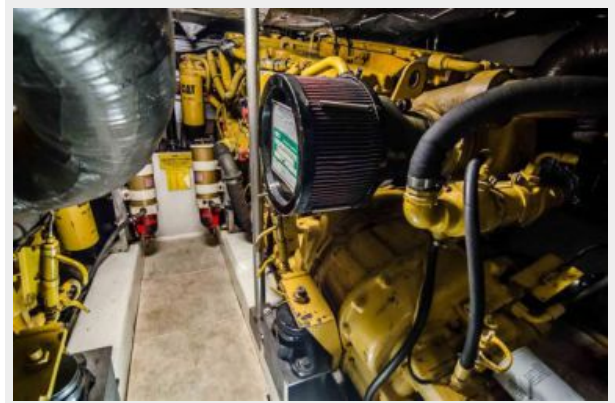




**Entrance to Engine Room**



**Engine Room**









# КОНТАКТЫ

---

Андрей Шестаков (Andrey Shestakov) – ведущий яхтенный брокер отдела продаж яхт и судов компании Shestakov Yacht Sales Inc. Официальный представитель Shestakov Yacht Sales Inc. для русскоговорящих клиентов в центральном офисе компании в Майами/Форт Лодердейл/Флорида/США.

## Контактная информация

---

Email: [andrey@shestakovyachtsales.com](mailto:andrey@shestakovyachtsales.com)

Web: [shestakovyachtsales.com](http://shestakovyachtsales.com)

## Телефоны

---

Краснодарский край: **+7(918)465-66-44**

США, Майами, Флорида: **+1(954)274-4435**

## Время работы

---

Понедельник – Суббота: **9:00 - 21:00**  
EDT

Воскресенье: **Закрито**

## Адрес

---



Harbour Towne Marina, 850 NE 3rd St,  
STE 213, Dania, FL 33004