

GREEN RABBIT — REGAL



Builder: REGAL

Year Built: 2006

Model: Cruiser

Price: PRICE ON APPLICATION

Location: United States

LOA: 44' 0" (13.41m)

Beam: 14' 0" (4.27m)

Min Draft: 2' 11" (0.89m)

Our experienced yacht broker, Andrey Shestakov, will help you choose and buy a yacht that best suits your needs **GREEN RABBIT — REGAL** from our catalogue. Presently, at Shestakov Yacht Sales Inc., we have a wide variety of yachts available on our sale's list. We also work in close contact with all the big yacht manufacturers from all over the world.

If you would like to buy a yacht **GREEN RABBIT — REGAL** or would like help answering any questions concerning purchasing, selling or chartering a yacht, please call **+1(954)274-4435**

TABLE OF CONTENTS

TABLE OF CONTENTS	2
SPECIFICATIONS	4
Basic Information	4
Dimensions	4
Speed, Capacities and Weight	4
Accommodations	4
Hull and Deck Information	4
Engine Information	5
DETAILED INFORMATION	6
Accommodations	6
Exclusions	6
Disclaimer	6
PHOTOS	7
Aft View / Swim Platform	7
Twin Volvo 8.1 GXI 420 hp	7
Port Side	7
Starboard Side	7
Dinette	8
Dinette	8
Helm	8
Helm	8
Helm Seat	9
Wetbar	9
Salon	9
Galley	10
Galley	10
Entertainment	10
Forward Cabin	10

CONTACTS	11
Contact details	11
Telephones	11
Office hours	11
Address	11

SPECIFICATIONS

Basic Information

Category: Cruiser

Sub Category: Cabin Cruiser

Model Year: 2006

Year Built: 2006

Country: United States

Dimensions

LOA: 44' 0" (13.41m)

Beam: 14' 0" (4.27m)

Min Draft: 2' 11" (0.89m)

MFG Length: 44' 0" (13.41m)

Speed, Capacities and Weight

Displacement: 22000 Pounds

Water Capacity: 101 Gallons

Holding Tank: 48 Gallons

Fuel Capacity: 328 Gallons

Accommodations

Total Cabins: 2

Total Berths: 2

Total Heads: 1

Hull and Deck Information

Hull Material: Fiberglass

Engine Information

Engines: 2

Manufacturer: Volvo

Model: GXI

Engine Type: Inboard

Fuel Type: Gas/Petrol

DETAILED INFORMATION

Accommodations

This 4460 Commodore is a very popular Regal model equipped with twin Volvo 8.1 GXI 420 hp engines. You enter the cabin with the galley to starboard, sofa/dining table to port and to forward is the berth.

Electronics include C120 Raymarine GPS Color LCD display, Raymarine ST60 Digital Depth Sounder and Raymarine DSC VHF. Max power bow thruster will assist in docking. New risers and manifolds were installed in fall of 2012.

Exclusions

Owner's personal belongings.

Disclaimer

The Company offers the details of this vessel or yacht in good faith but cannot guarantee or warrant the accuracy of this information nor warrant the condition of the vessel. A buyer should instruct his representatives, agents, or his surveyors, to investigate such details as the buyer desires validated. This vessel or yacht is offered subject to prior sale, price change, or withdrawal without notice.

PHOTOS

Aft View / Swim Platform



Twin Volvo 8.1 GXI 420 hp



Port Side



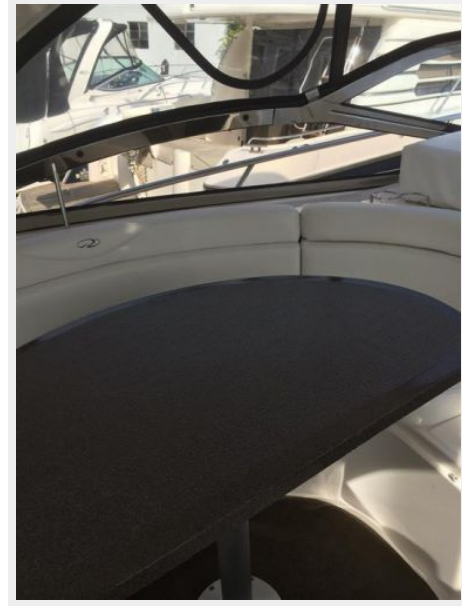
Starboard Side



Dinette



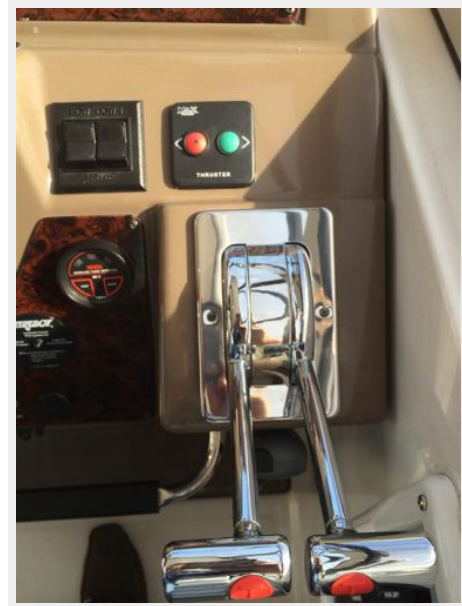
Dinette



Helm



Helm



Helm Seat



Wetbar



Salon



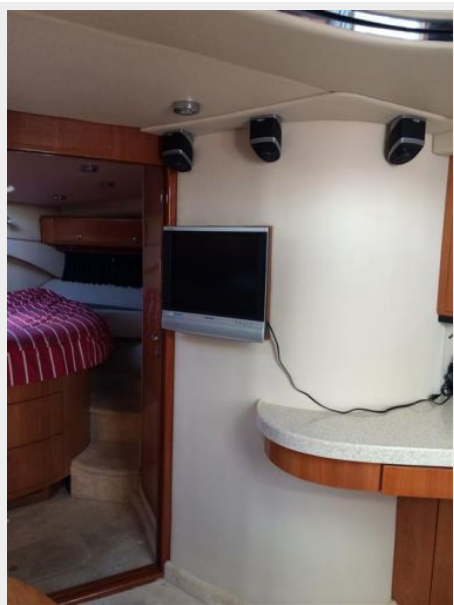
Galley



Galley



Entertainment



Forward Cabin



CONTACTS

Andrey Shestakov, leading yacht broker of the sales department of Shestakov Yacht Sales Inc. Shestakov Yacht Sales Inc., the official representative of the Miami/Fort Lauderdale FL headquarters.

Contact details

Email: andrey@shestakovyachtsales.com

Web: shestakovyachtsales.com/en/

Telephones

USA: +1(954)274-4435

Office hours

Monday – Saturday: **9:00 - 21:00** EDT

Sunday: **closed**

Address



Harbour Towne Marina, 850 NE 3rd St,
STE 213, Dania, FL 33004